



The software experts look for only the best.
Their choices are inside...

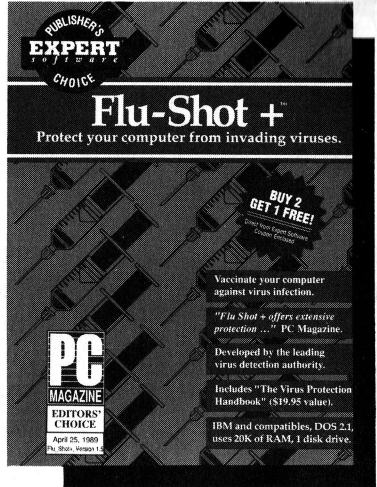
Expert Software™

Flu-Shot +

Protect your computer from invading viruses.

Infections by viruses, programs that secretly spread between computers and alter or destroy data, have increased dramatically. The main avenue viruses take to invade computers is through the use of an infected floppy disk.

Flu-Shot + is a vaccination program that protects your computer system against invading, often lethal, computer viruses.



April 25, 1989

Flu_Shot+, Version 1.5

The program is designed to monitor the operation of your computer and watch for any instructions sent to its operating system. When a potentially damaging one appears, Flu-Shot + interrupts the program and alerts you.

Winner of the PC Magazine Editors Choice award, Flu-Shot + was developed by Ross M. Greenberg, recognized as the leading expert on virus protection.

Flu-Shot + also includes "The Virus Protection Handbook," a comprehensive guide for avoiding infections and their devastating effects.

\$14.95

System requirements: IBM PC, Tandy and compatibles require 256K, DOS 2.1 or higher, 1 floppy disk drive.

Expert Will

Software that prepares a legal Last Will and Testament

With Expert Will you can prepare a legally binding Last Will and Testament, privately, on your own computer.

Expert Will makes the process straightforward. Provide answers to questions on screen and the program inserts the answers into the proper places and implements the correct, legal language.

The result is a Last Will and Testament that reflects your specific wishes for the distribution of your estate. Your family and friends will be protected from arbitrary estate distribution by a court.

- Contains requirements for each state, except Louisiana.
- A basic question and answer format is provided.
- It allows you to designate gifts or bequests.

Expert Will

Name/Testator: Nicholas J. Hardy IV

County: _____ State: _____

Spouse: _____

Preview Will	Y
Print Will	Y
Number of copies	2

Dependents: _____

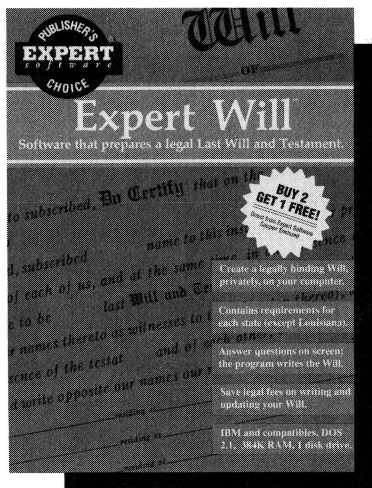
Bequests: _____

F1=Help ESC=Quit PgUp=Forward PgDn=Back

- You can designate an executor of the estate.
- You can set up guardians for minors.
- Assets can be used to pay debts and taxes.
- Bequests can be passed to surviving children of beneficiaries.

\$14.95

System requirements: IBM PC, Tandy and compatibles require 384K, DOS 2.1 or higher, 1 disk drive, supports EGA, CGA and Hercules graphics. Printers: Epson, Epson compatibles, Gemini Star, IBM Graphics, Panasonic, NEC, Blue Chip, and all other IBM compatible dot matrix printers. Not legal in Louisiana.

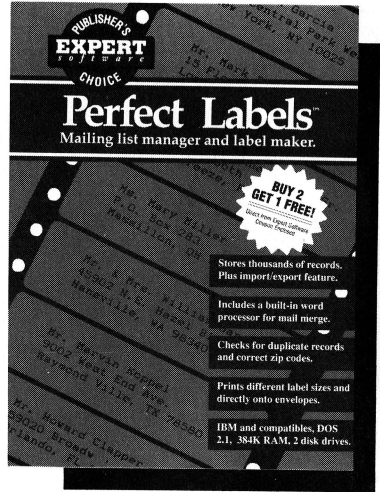


Perfect Labels

Mailing list manager and label maker.

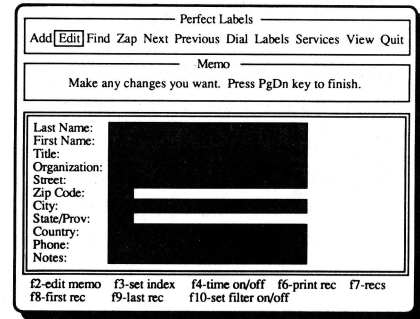
Perfect Labels is packed with features that give you sophisticated mailing list management.

- Store thousands of records. Files expand to disk size.
- Import/export data base records.
- Built-in word processor for mail merge.
- Counts records by zip for bulk mailings.



Entering information is simple with these Expert features:

- Searches for duplicate records as they are entered.
- Checks to see if addresses have correct zip and state.
- A 'copy' option fills in repetitive information.
- Dated memo field provided for each record.
- Search and replace text in any field.



Many printing options:

- Up to 4 labels across.
- Different label sizes and directly onto envelopes.
- Up to 10,000 copies of the same label.

\$14.95

System requirements: IBM PC, Tandy and compatibles require 384K, DOS 2.1 or higher, 2 disk drives, monochrome monitor, supports EGA, CGA and Hercules graphics. Printers: HP Laser Jet and compatibles; Epson, Epson compatibles, Gemini Star, IBM Graphics, Panasonic, NEC, Blue Chip, and all other IBM compatible dot matrix printers.

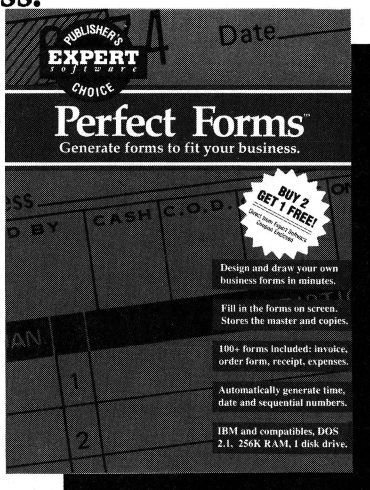
Perfect Forms

Generate forms to fit your business.

Perfect Forms gives you the tools to design and create business forms for marketing, sales, accounting, management, personnel or any other purpose.

Over 100 Forms On Disk

Or you can adapt the many existing forms provided on disk, including invoices, delivery receipts, order forms, expense sheets, inventory forms and many more.



Perfect Forms provides all the features needed to create forms quickly and easily. Type text anywhere on a form. Draw lines, shades and solid borders. Cut, copy and paste blocks of a form.

Once you have created a form, you can print a high quality copy of it for photocopying or printing.

Invoice				
Eastwood Supplies 14 Grove Street Newville, NE 40321			Invoice # _____ Your PO # _____ Date _____	
Sold to _____ _____				
Terms	Sold by	Ship Date	Ship Via	
Item	Quantity	Price	Extension	

Fill in a form on screen

You can fill in a form on screen, edit and print it, error free. The master form remains blank, the filled in form is stored on disk. Perfect Forms also generates sequential numbers and the current date and time.

\$14.95

System requirements: IBM PC, Tandy and compatibles require 256K, DOS 2.1 or higher, 1 disk drive, supports CGA and Hercules graphics.

DOS Tutor

Learn to use the IBM Disk Operating System.

This friendly Tutor helps you learn about the many commands contained in the IBM PC Disk Operating System (DOS).

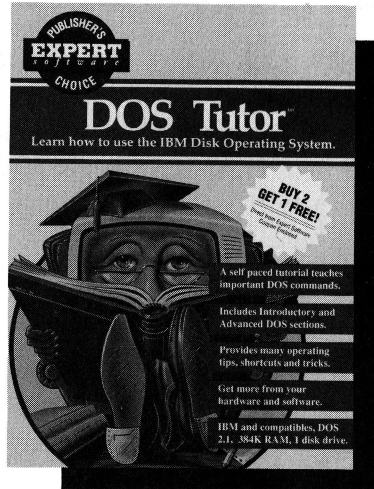
DOS Tutor is interactive so you can get involved in the learning process. The program will even quiz you from time to time on the materials you've covered.

Introduction to DOS covers every day commands like how to:

- Format, copy and compare disks.
- Copy, display, rename and verify files.
- Check a volume, file or disk.

The Advanced DOS section covers complex commands such as creating subdirectories, pathnames and batch files.

You'll remember the correct syntax used for commands, so you never have to search through DOS manuals again.



DOS Tutor contains a wealth of other useful information such as:

- How the keyboard operates.
- Hardware explanations.
- Computer history and trivia and definitions.

\$14.95

System requirements: IBM PC, Tandy and compatibles require 384K, DOS 2.1 or higher, 1 disk drive, supports EGA, CGA and Hercules graphics.

F1	F2	F3	F4	F5	F6	F7	F8	F9	F10	Function Keys
----	----	----	----	----	----	----	----	----	-----	---------------

The 10 function keys assume different roles for different programs. F1 through F5 have special meaning within DOS. They help in reissuing/editing the last DOS command typed.

Newer keyboards have 12 function keys.

Two keys redisplay the line currently in the buffer:

- F1** Redisplays the buffer, one character at a time, each time F1 is pressed.
- F2** Redisplays the entire buffer.

For example, if A>TYPE \MYPATH\MYFILE were the last DOS command typed, then pressing F3 would retype the line completely, and pressing F1 19 times would reshew the line, a character at a time.

Personal Publisher

Desktop Publishing made simple.

With Personal Publisher you can create newsletters, flyers, awards, presentations, cards, announcements, ads and more.

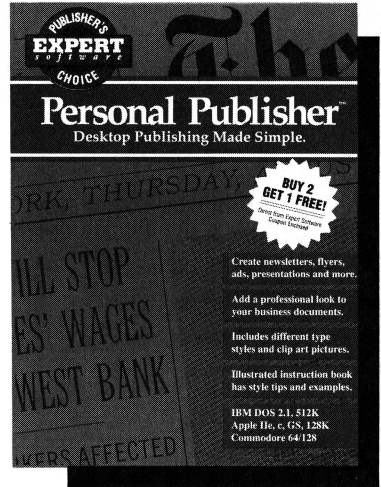
Combine text, graphics and page layout so your documents will look like they were created by a professional graphic designer.

Text

The built-in word processor is loaded with features. You can copy, cut, paste and move blocks of text. And select different fonts, type styles and sizes.

Graphics

You don't have to be an artist to create sharp looking pictures for your pages. Personal Publisher comes with plenty of clip art pictures on disk.



Page Layout

Pages can have multiple columns with a selection of designs. There are style sheets designed on disk. Just add text and graphics and you've got an attention grabbing page, ready to print.

\$14.95

System requirements: IBM PC, Tandy and compatibles require 512K, DOS 2.1 or higher, 1 disk drive, supports CGA and Hercules graphics; Apple IIe, IIc, IIGS ProDOS; Commodore 64 or 128, GEOS.

Personal Finance

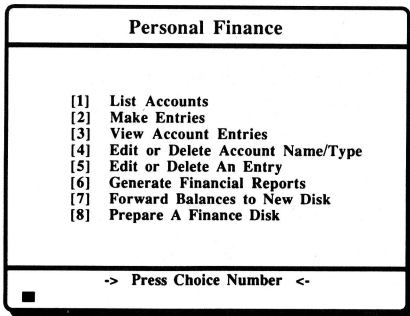
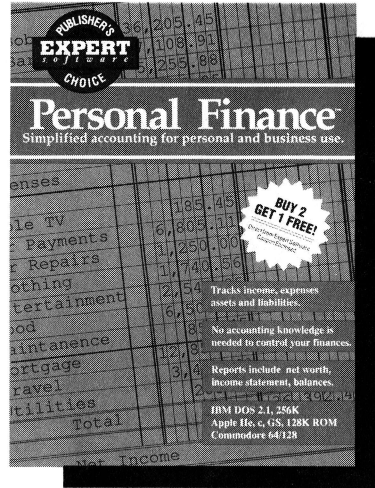
Simplified accounting for personal use.

Personal Finance was written by a bank executive to give people a simple means of balancing their books. No accounting knowledge is needed.

As you make entries, the program determines whether to debit or credit the accounts, keeping track of income, expenses, assets and liabilities.

Reports are always up-to-date and can be viewed or printed.

- Expense reports for budgeting and tax preparation.
- Income Statement shows earnings versus expenses.
- Assets and Liabilities provides a picture of net worth.
- A Trial Balance shows you the books are balanced.
- A complete account history lists each transaction.



Personal Finance helps you know more about all your finances. It goes beyond a simple checkbook program to give you the complete picture. Track outstanding loans, the assets you own, well as comparing income to spending levels.

\$14.95

System requirements: IBM PC, Tandy and compatibles require 256K, DOS 2.1 or higher, 1 disk drive, supports CGA and Hercules graphics; Apple IIe, IIc, IIGS ProDOS; Commodore 64 or 128.

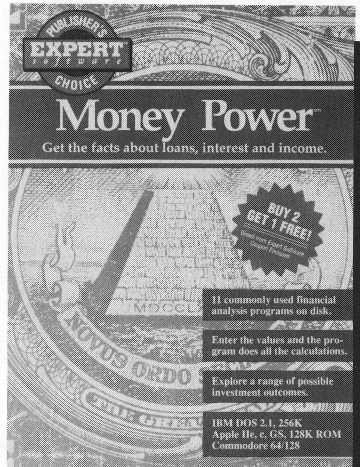
Money Power

Get the facts about loans, interest and income.

Money Power is a financial calculator that will answer questions about future income, loans and interest costs.

If you'd like to see the possible results of a financial decision before you make it, Money Power will automatically handle the complicated and time consuming calculations.

- What can you borrow?
- Net worth in the future.
- Loan payment schedules.
- How to reach a savings goal.
- Actual yield of interest rates.
- Loan costs and payment amounts.
- Monthly withdrawals at retirement.
- The cost of loans with variable rates.
- Penalty payment for early withdrawals.
- Should you fix your car or buy a new one?
- Generating more income: IRA or savings account?



Money Power	
[1]	Your Borrowing Power
[2]	Loan Payment Schedule
[3]	Loan Period Determination
[4]	Loans With Variable Rates
[5]	Fix or Buy a New Car
[6]	Your Future Worth
[7]	Reaching a Savings Goal
[8]	IRA vs. Savings Account
[9]	Yield From Interest Rate
[10]	Monthly Retirement Withdrawals
[11]	IRA Early Withdrawal Costs

Enter the number of your choice (0 = Quit):

You select the formula from a menu and simply fill in the blanks, the computer does the rest. Test the different possibilities before you make the decision.

\$14.95

System requirements: IBM PC, Tandy and compatibles require 256K, DOS 2.1 or higher, 1 disk drive, supports CGA and Hercules graphics; Apple IIe, IIc, IIGS ProDOS; Commodore 64 or 128.

Personal Skills

Would you like to improve your personal skills?

- Read faster?
- Improve your memory?
- Learn to type?
- Make decisions more easily?

Typing Tutor

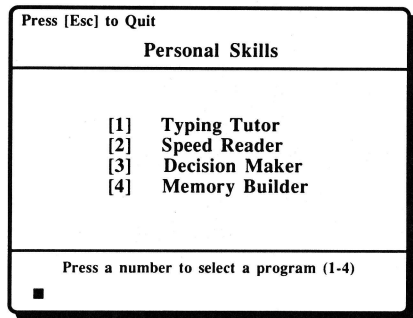
Advance at your own pace. Select different levels of keyboard practice to get the type of drill you need. Novices learn the keyboard while experienced typists can improve their speed.

Memory Builder

This requires concentration. There's a hidden number behind each square on a grid. You need to find the matching number. Choose from four skill levels.

Decision Maker

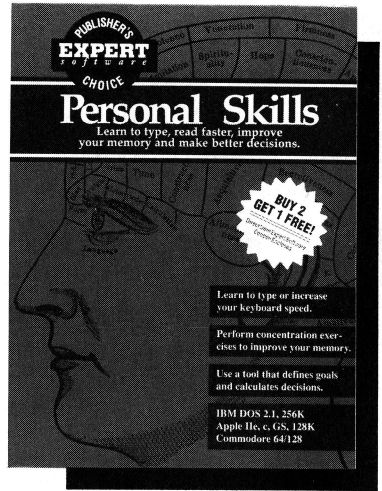
Enter a goal and the program helps you determine the best choices. Helps you analyze reasons for making decisions.



Speed Reader

This exercise starts with a single letter or number flashed on screen and increases each round. Test your ability to remember an increasing amount of information.

\$14.95



System requirements: IBM PC, Tandy and compatibles require 256K, DOS 2.1 or higher, 1 disk drive, supports CGA and Hercules graphics; Apple IIe, IIc, IIGS ProDOS; Commodore 64 or 128

Perfect Typing

The simple way to learn to type.

Perfect Typing is a tutorial program that will help you learn to type. It will give you structured practice to learn touch typing and improve typing speed.

Plus it comes with a **Certificate of Achievement Award**, printed on high quality parchment paper.

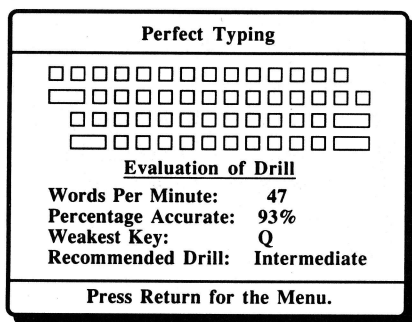
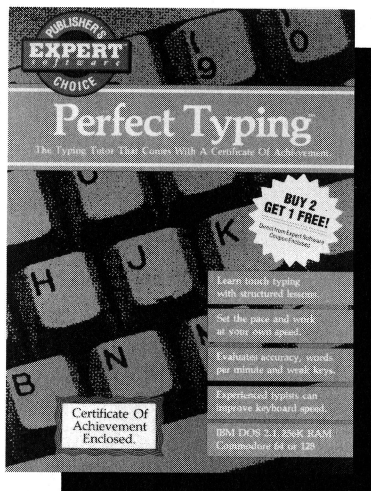
For Beginners

If you are just starting to type, you can set your own pace as you go through a series of progressive lessons.

Perfect Typing has finger exercises to build your ability to type accurately. And you'll learn where all the keys are so you don't have to "hunt and peck" as you type.

For Experienced Typists

If you are an experienced typist, you can improve typing speed, using advanced lessons. As you evaluate your progress you can concentrate effort where it is needed.



Perfect Typing provides the important foundations needed to be a good typist, whether you use a typewriter or computer.

\$14.95

System requirements: IBM PC, Tandy and compatibles require 256K, DOS 2.1 or higher, 1 disk drive, supports CGA and Hercules graphics; Commodore 64 or 128.

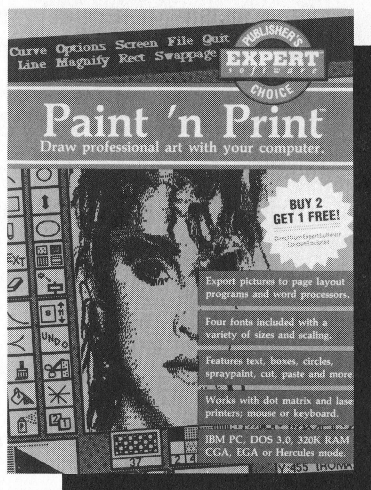
Paint 'n Print

Draw professional art with your computer.

Paint 'n Print is a sophisticated paint program that is easy to use. Without any artistic skills you can create professional art on your computer using the many painting and drawing tools included. And you can add text using different fonts.

You can also export pictures to word processors and page layout programs that accept PCX files.

- 'Zoom' for precision editing.
- Use the keyboard or a mouse.
- Create animation on screen.
- 'Preview' shows the whole page.
- Clip art pictures included on disk.
- Four font styles and 81 sizes for each font.
- Text can also be imported from word processors.
- Draw lines, circles, rectangles, octagons, and arcs.
- Paint brush, spray paint, eraser and 40 fill patterns.



- Cut, paste, copy, invert and flip pictures.
- Works with laser and dot matrix printers.
- Create presentations, announcements ads, cards and more.



\$14.95

System requirements: IBM PC, Tandy and compatibles require 320K, DOS 3.0 or higher; CGA, EGA or Hercules card; black and white, works with all Epson and IBM Proprinter compatible printers and HP Laser Jet compatible printers.

Personal Roots

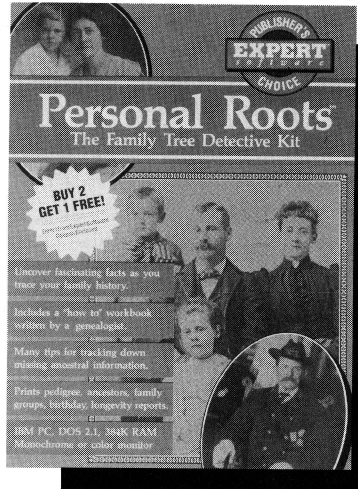
The Family Tree Detective Kit

Personal Roots is a genealogy program that will help you trace family history and organize the information into fascinating reports about your ancestors.

It's easy to fill in information and create reports using pop up menus. The program helps you tie together relationships, and intelligently creates the links between parent and child automatically.

And it prints family history worksheets you can use to collect data.

Eight reports can be printed or displayed including a pedigree chart, a chart of any person's descendants, family groups, birthdays and longevity analysis. Wedding anniversaries and anniversary of death reports are also available.



Add Edit Next Previous Relate Locate Services Clear Quit	
Mem	Please make selection
Unsure of exact birthplace.	Ancestors
Last Name: Hardy	Descendants
First Name: John Nicholas	Family Groups
Street: 78 Eastward Road	Alphabetical List
City: Memphis	Birthday List
State/Prov: TN	Wedding Anniversaries
Zip Code: 54017	Death Anniversaries
Country: USA	Longevity Analysis
Notes	
Born: 06/30/1894	
Place: Auburn, Ohio	
Married: 04/19/1915	
Place: Rivertown, NB	
Died: 06/14/1972	
Place: Memphis, TN	
Sex: M	
f2 - memo f7 - records	

Bonus Workbook: A genealogy workbook is included, written by a certified genealogist. It has an introduction to tracing family history and provides hints for organizing data and tips for finding information.

\$14.95

System requirements: IBM PC, Tandy and compatibles require 384K, DOS 2.1 or higher; 1 floppy disk drive; color or black and white.

Menu Power

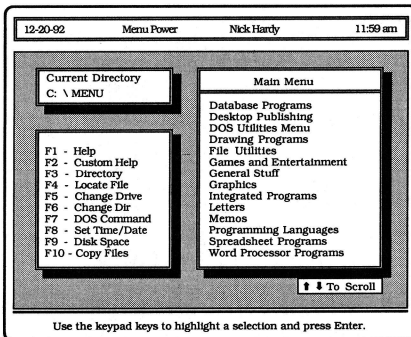
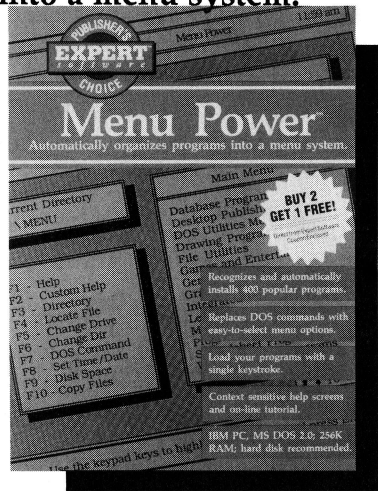
Automatically organizes programs into a menu system.

Menu Power organizes the programs on your disks into logical menu options. Select and run programs with a single keystroke, without having to enter complicated DOS commands.

❑ Automatic Set Up

The program recognizes 400 popular programs. It scans your disk drive and automatically sets up all the programs on menus, with all the directory and loading syntax required.

Within minutes you have an organized, menu-driven interface that appears when you load the computer. You can run programs, DOS commands and batch files simply by selecting the option from a menu. Menu Power includes on-screen help and a screen saver too.



❑ Customizing Tools

Menu Power also provides menu-editing tools so you can create a custom interface, with all the commands in the background, and special help screens.

\$14.95

System requirements: IBM PC, Tandy and compatibles require 256K, DOS 2.0 or higher; hard disk recommended; mouse support included.

PC Protection

Avoid system failures, unneeded repairs and loss of files.

PC Protection is a utility that tests hardware and backs up software. It has 6 programs to test computers and peripherals: disk drives, printer, screen, sound, disks and memory. The program also makes back up copies of software, so you won't lose important data or programs.

\$14.95

System requirements: IBM PC, Tandy and compatibles require 256K, DOS 2.1 or higher, 1 disk drive, supports CGA and Hercules graphics; Apple IIe, IIc, IIgs ProDOS; Commodore 64 or 128.

Disk Tools

Select disk operating system commands from a menu.

Disk Tools is a collection of 12 utility programs that will make your computer easier to use. It provides you with a menu driven Disk Operating System that simplifies operations. Disk Tools makes it easy to delete files, make back up disks, copy or rename files and format disks for storing data.

\$14.95

System requirements: IBM PC, Tandy and compatibles require 256K, DOS 2.1 or higher, 1 disk drive, supports CGA and Hercules graphics; Apple IIe, IIc, IIgs ProDOS; Commodore 64 or 128

Expert Filer

A data base for personal and business use.

Expert Filer is an information manager that you can use to store customer lists, inventory items, collections, phone numbers, employees, or any other information. Sort and extract records from a file. Search through the files for a particular set of records. Configure and print reports and mailing labels.

\$14.95

System requirements: IBM PC, Tandy and compatibles require 256K, DOS 2.1 or higher, 1 disk drive, supports CGA and Hercules graphics; Commodore 64 or 128.

Expert Software Order Form

You can buy these products from your dealer. If unavailable, order directly from us. All programs are \$14.95.

Please send me:	Specify computer:	Units	Price
Flu Shot +	IBM
Expert Will	IBM
Perfect Labels	IBM
Perfect Forms	IBM
DOS Tutor	IBM
Personal Publisher	IBM, Apple, Commodore
Personal Finance	IBM, Apple, Commodore
Money Power	IBM, Apple, Commodore
Personal Skills	IBM, Apple, Commodore
Perfect Typing	IBM, Commodore
Paint 'n Print	IBM
Personal Roots	IBM
Menu Power	IBM
Expert Filer	IBM, Commodore
Disk Tools	IBM, Apple, Commodore
PC Protection	IBM, Apple, Commodore
Florida state residents add sales tax		
Shipping and handling			\$3.00
TOTAL		

Make checks (US dollars) payable to Expert Software, Inc.

For MasterCard Account No
 or Visa: Expiration
 Signature
 Phone

Ship to:

Name
 Street
 City State Zip.....

Send To: **Expert Software**
Post Office Box 143376
Coral Gables, FL 33134



No COD's or American Express Cards. Allow 1 to 4 weeks delivery.