

Point-to-Point™

DESCRIPTION

Point-to-Point is a highly sophisticated, yet easy to use communications program that includes the ability to send multiple files, file names and all, using Point-to-Point's exclusive EXP Extended Batch Xmodem protocol. Point-to-Point features auto log-on macros, simultaneous downloading with a print option, and real-time clock support. Plus, Point-to-Point uses the familiar AppleWorks commands and filecard metaphor. With Point-to-Point, there's never been an easier way to share information with other computers.

USES

Point-to-Point opens your Apple II to the world of telecomputing. It communicates with almost any computer and modem - across the room or across the country. With Point-to-Point, you can electronically search information services, join ongoing real-time discussions; even swap programs and files. And Point-to-Point makes all of this available with just a few keystrokes.

Point-to-Point is the only communications program that lets you use all 8 Pinpoint Desktop Accessories - all at the touch of a key. Switch to Pinpoint's Appointment Calendar without logging off, or pop-up the Calculator to add-up purchases while shopping on CompuStore.

SUGGESTED RETAIL PRICE

\$129.00

SYSTEM REQUIREMENTS

Requires 128K; Apple IIc, Enhanced IIe, IIcGS, 100% Apple IIe compatibles, or Apple IIe with Pinpoint's IIe Upgrade Kit.

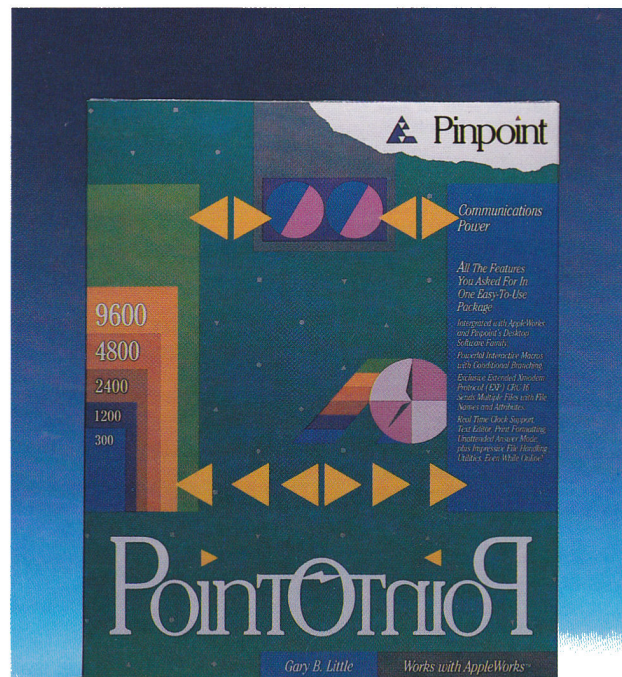
Modems & Interface Cards:

Supports most popular modems and interface cards. Refer to Hardware Compatibility list

- *The only Apple II communications program with EXP batch Xmodem transfer protocol.*
- *No file conversions or renaming required.*
- *Powerful macros with Quick-Keys and conditional branching.*
- *Familiar, easy-to-use AppleWorks filecard user interface & Pinpoint compatibility too!*

Apple II Forever.
Apple IIc, Enhanced IIe
and hot new Apple IIcGS.

Power Tools



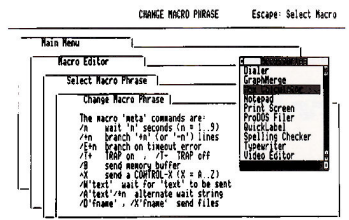
below, or ask your dealer or Pinpoint for an updated list.

SOFTWARE REQUIREMENTS

None

FEATURES/PERFORMANCE

- Uses AppleWorks-style integrated communications commands.
- Powerful conditional macros automate log-on and SAVE THEN PRINT sequences.
- Extended Xmodem Protocol (EXP) automatically sends and receives batches of ready-to-run files - including all formatting commands and file names.
- Only communications program that allows you to install Pinpoint Desktop Accessories.
- Sends AppleWorks word processing files without conversion.
- Real-time clock support displays actual time and total elapsed time to help you manage on-line costs.
- Quick-Keys can start macros at any line.
- Capture buffer automatically writes to disk when full; thus allowing safe, uninterrupted downloading.



- 14 macro commands include conditional branching, text-string matching, Branch on Error, GOTO, and automatic file or buffer send.

- Built-in easy-to-use text editor.
- Includes free or money-saving offers from many of the on-line electronic services.

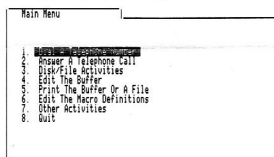
- Permits simultaneous printing while on-line.
- File handling utilities manage files, sub-directories and paths automatically - even while on-line!

- Instant "Print Screen" feature prints anything and everything displayed on your screen.

- Comprehensive file recording features cut costs and make your work look great the first time, every time.

- Smart utilities strip line feeds from downloaded files, and converts TXT to AWP files; plus there's 8 indispensable file type conversions!

Disk: Disk 2 (Disk 6) POINT-TO-POINT Connected



Type number, or use arrows; then press Return

- Full dialing setups include PBX 'wait' commands, with pulse or tone dialing.
- Communicates at 300, 1200 and 2400 baud. Direct connect up to 9600 baud.



I called your tech support number just today with some questions I had about my new Pinpoint, which I got last Saturday. I have two more: I can't seem to find in the documentation how to change modem default settings and I've been told by people in MA that I should have version 1.2C. I have version 1.2. What am I missing and what is involved in getting an upgrade?

Last page. Enter command or (CR) to continue !!

PERFORMANCE BOOSTING HARDWARE OPTIONS

Any standard ProDOS storage device, including UniDisk 3.5, Apple 3.5 Drive, RAM Drive and/or Hard Disk Drive.

PERFORMANCE BOOSTING SOFTWARE OPTIONS

"Pop-up" software:

- Pinpoint Desktop Accessories
- Pinpoint Toolkit *Pinpoint add-on desktop accessories*

Stand-alone software:

- Pinpoint RunRun *ProDOS high-capacity disk manager*
- Pinpoint RAM Enhancement Kit *RAM partitioning software*

HARDWARE SUPPORTED

Modems:

All 100% Hayes "AT" Command Set compatible external modems: Anchor Automation Mark VII, Signalman Mark XII, Volkmodem 12; Apple 300/1200, Apple Personal Modem; Cermetec AppleMate 1200, 1200/2400; Hayes Micromodem II, Ite, Hayes Smartmodem 300, 1200, 2400; Microcom Era 2, Multitech Multimodem; Novation Apple-Cat 300; Prentice Popcom X-100; Prometheus ProModem 300c, 1200A, 1200/2400 series; Transend (SSM) Apple ModemCard; Universal Data Systems 212A; U.S. Robotics Courier and Password 1200 and 2400; Zoom Modem IIe; Most external manual dial modems.

Printer's:

Most dot matrix and letter quality printers and printer interface cards are fully functional with Point-to-Point.

RAM Cards:

Apple IIc, IIe and IIGS Memory Expansion Cards; AST SprintDisk and MegaRAMPlus; Applied Engineering RamWorks*, Ram-Works II*, Z-RAM* and Z-RAM Ultra* (with Super Desktop Expander version 4.7 or greater), and RamFactor; Checkmate's MultiRam IIe or MultiRam C (with AppleWorks Expander version 4.3 or greater). Pinpoint RAM Enhancement Kit is OPTIONAL but substantially improves RAM card performance and is highly recommended.

High Capacity Disks:

Any standard ProDOS storage devices are fully functional with Point-to-Point.

Ask your dealer, or contact Pinpoint for an updated list of printer and interface cards, RAM and accelerator cards, disk drives and modems supported by Pinpoint Desktop Accessories.

POINT BY POINT COMPARISON CHART

	Point-to-Point	AE Pro	Access II	Comm-Works
AppleWorks filecard interface	X		X	X
Major command mnemonics always visible	X			
ESC key always used to cancel or back up one menu	X			
Can send files from buffer	X	X		X
Can wait for prompt before sending line	X	X		
Automatic save-to-disk when capture buffer fills up	X	X		
Copy screen to buffer	X		X	
Xmodem with checksum	X	X	X	X
Xmodem with CRC-16 error detection and correction	X			
Extended Xmodem to send multiple ProDOS files in batches, including full filenames and attribute bytes	X			
Converts TXT to AWP files	X			
Desktop file manager/ converter	X			
Built-in text editor	X	X		X
Real-time clock display	X			
Elapsed-time display	X			
Can print while communicating	X	X		
Can print the screen on demand	X			
Wait for text string macro	X	X	X	
IF...THEN macro capability	X	X	X	
Hang up telephone macro	X	X		
Send a file macro	X	X	X	
Send a file (Xmodem) macro	X			
Send capture buffer macro	X			
Can trap all control characters	X	X	X	
Right-Arrow key copies over the screen character in terminal mode	X		X	
Works with Pinpoint Desktop Accessories, RunRun, and GraphicEdge	X			

NOTE: Because Pinpoint Publishing is continuously looking for ways to improve and enhance its software the above specifications are subject to change without notice. Contact Pinpoint Publishing with your questions and suggestions.