

ACTIVISION LIMITED 90-DAY WARRANTY

Activision, Inc. warrants to the original consumer purchaser of this computer software product that the recording medium on which the software programs are recorded will be free from defects in material and workmanship for 90 days from the date of purchase. If the recording medium is found defective within 90 days of original purchase, Activision agrees to replace, free of charge, any product discovered to be defective within such period upon receipt at its Factory Service Center of the product, postage paid, with proof of date of purchase.

This warranty is limited to the recording medium containing the software program originally provided by Activision and is not applicable to normal wear and tear. This warranty shall not be applicable and shall be void if the defect has arisen through abuse, mistreatment, or neglect. Any implied warranties applicable to this product are limited to the 90-day period described above. If the recording medium should fail after the original 90-day warranty period has expired, you may return the software program to Activision, Inc., at the address noted below with a check or money order for \$7.50 (U.S. currency), which includes postage and handling, and Activision will mail a replacement to you. To receive a replacement, you should enclose the defective medium (including the original product label) in protective packaging accompanied by: (1) a \$7.50 check, (2) a brief statement describing the defect, and (3) your return address. EXCEPT AS SET FORTH ABOVE, THIS WARRANTY IS IN LIEU OF ALL OTHER WARRANTIES, WHETHER ORAL OR WRITTEN, EXPRESS OR IMPLIED, INCLUDING ANY WARRANTY OF MERCHANTABILITY OR FITNESS FOR A PARTICULAR PURPOSE, AND NO OTHER REPRESENTATION OR CLAIMS OF ANY NATURE SHALL BE BINDING ON OR OBLIGATE ACTIVISION. IN NO EVENT WILL ACTIVISION BE LIABLE FOR SPECIAL, INCIDENTAL, OR CONSEQUENTIAL DAMAGE RESULTING FROM POSSESSION, USE, OR MALFUNCTION OF THIS PRODUCT, INCLUDING DAMAGE TO PROPERTY AND, TO THE EXTENT PERMITTED BY LAW, DAMAGES FOR PERSONAL INJURY, EVEN IF ACTIVISION HAS BEEN ADVISED OF THE POSSIBILITY OF SUCH DAMAGES.

SOME STATES DO NOT ALLOW LIMITATIONS ON HOW LONG AN IMPLIED WARRANTY LASTS AND/OR THE EXCLUSION OR LIMITATION OF INCIDENTAL OR CONSEQUENTIAL DAMAGES, SO THE ABOVE LIMITATIONS AND/OR EXCLUSION OR LIMITATION OF LIABILITY MAY NOT APPLY TO YOU. THIS WARRANTY GIVES YOU SPECIFIC LEGAL RIGHTS, AND YOU MAY HAVE OTHER RIGHTS WHICH VARY FROM STATE TO STATE.

WARNING

Any attempt to duplicate this product may damage it. Such damage is not covered by the warranty.

RETURNS

U.P.S. or registered mail is recommended for returns. For the best service, please be sure to—

1. Send the diskette or cartridge only.
2. Write the name of the product and the type of computer system you have on the front of the package.
3. Enclose your return address, typed or printed clearly, *inside* the package.

Send to:

WARRANTY REPLACEMENTS
Product Support
Activision, Inc.
2350 Bayshore Parkway
Mountain View, CA 94043

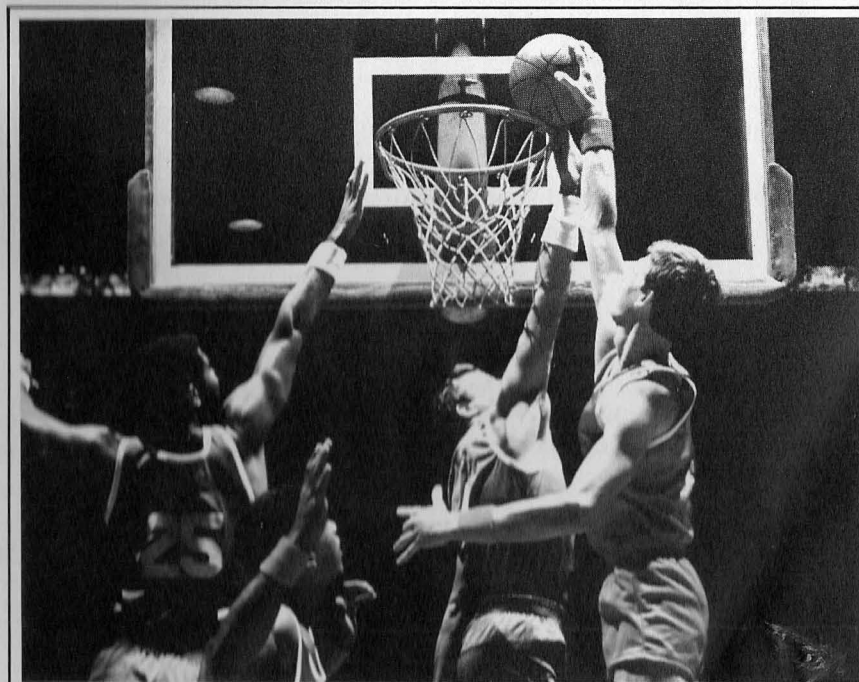
GAMESTAR★

©1987 Activision, Inc.

KD-509-03

GBA CHAMPIONSHIP BASKETBALL™

Two-on-Two™



Player's Guide

For Apple® IIGS™ Computers

GAMESTAR★

Distributed and marketed exclusively by **ACTIVISION**

Apple IIGS version by Paul Terry and Jack Thornton.

Produced by Scott Orr.

Soundtrack by Russell Lieblich.

Graphics by John Burton.

Special thanks to Don Harlow and Keith Orr.

Player's Guide by Mard Naman, with additional contributions by Jim Carr. Editorial management by Steven Young.

For a recorded message about our newest software, call 415 960-0518. For technical help, call Product Support between 9:30 a.m. and 4:30 p.m. Pacific time on Monday, Tuesday, Thursday, and Friday between 9:30 a.m. and noon on Wednesday: 415 960-0518.

For information about our products, write to:

Product Support
Activision, Inc.
P.O. Box 7287
Mountain View, CA 94039

COPYING PROHIBITED

This software product is copyrighted and all rights are reserved by Activision, Inc. The distribution and sale of this product are intended for use of the original purchaser only and for use only on the computer system specified. Copying, duplicating, selling or otherwise distributing this product without the express written permission of Activision are violations of U.S. Copyright law and are hereby expressly forbidden.

©1986, 1987 Activision, Inc. All rights reserved.

Apple is a registered trademark and IIGS is a trademark of Apple Computer, Inc.

CONTENTS

<i>King of the Court</i>	2
<i>Getting Started</i>	3
<i>The Chalkboard Menus</i>	4
<i>How to Pass, Shoot, and Move Around</i>	12
<i>The Player Draft</i>	17
<i>Calling Plays</i>	19
<i>Penalties</i>	24
<i>After the Game</i>	27



King of the Court

Basketball. The lightning-paced sport for super-athletes. The game of strategy, guts, stamina, and—most of all—teamwork.

It's all here, in *GBA Championship Basketball: Two-on-Two*.

Two-on-Two helps you develop the strategies and skills to make you play like a pro. You can play with a teammate and learn *teamwork*. You can pick your *offensive alignment* while your opponent sets his defense. And when your opponent has the ball, you can choose among several *defensive strategies*.

Two-on-Two gives you lots of ways to compete: one player against the computer, two players against a computer team, two players against each other, practice sessions, and even a 24-team league competition climaxing in the GBA Championship Game.

This *Player's Guide* includes all the information you'll need to play *Two-on-Two*. The first section, "Getting Started," tells you how to load the program into your computer.

"The Chalkboard Menus" describes all your options for playing the game, from the two practice modes to the four game modes. There's also a DEMO mode that lets you watch two computer-controlled teams go head-to-head against each other. This section also tells you how to use the joystick and command keys. "The Scouting Report" shows you how to rate your playing skills for inside and outside shooting, dribbling, stealing, quickness, and jumping. In addition, you'll get your first look at your computer opponents—all the teams you'll have to beat to make it to the GBA Championship game.

In "How to Pass and Shoot," you'll find all the information you need to develop your passing game and become a team player. And you'll learn all about jump shots, hook shots, slam dunks, tip-ins, and rebounds.

"The Player Draft" tells you all about your superstar computer teammates—10 players in all, each one patterned after a real professional basketball star.

"Calling Plays" describes the offensive and defensive strategies you'll need to outsmart and outplay your opponents.

The "Penalties" section explains fouls and other violations and describes how you can use the clock to your advantage by calling time-outs.

"After the Game" tells you how to read the box scores from the game you just played and how to start a new game.

Getting Started

You must have version 2.0 ROM chips in your Apple IIGS to play *GBA Championship Basketball*. If your computer is not so equipped, see your Apple dealer.

To load *GBA Championship Basketball: Two-on-Two* into your computer, follow these steps:

(Note: Do not write-protect your *GBA Championship Basketball* diskette.)

You may use a joystick or the keyboard to play a one-player game of *GBA Championship Basketball*. During a two-player game, player one uses the joystick and player two uses the keyboard. See "Joystick and Keyboard Controls" on page 12.

If your computer is off:

1. Insert the *GBA Championship Basketball* diskette in your disk drive, label side up.
2. Turn on your computer and monitor. (Press the *esc* key to skip the title and credit screens.) After the title and credit screens appear, the **PLAY OPTIONS** chalkboard appears.

If your computer is already on:

1. Insert the *GBA Championship Basketball* diskette in your disk drive, label side up.
2. Hold down the *command* and *control* keys and press the reset button at the top left of the keyboard.

Sound

If you like, you may press *control* and *S* at the same time to turn the sound on and off. You can also press the up and down arrow keys to gradually raise and lower the sound level.

The Chalkboard Menus

Following the introductory music and credit screens, a green chalkboard appears on your screen with three choices: **DEMO**, **GAME**, and **PRACTICE**. You'll notice the **GAME** option is highlighted in white. If you're using a joystick, pull back or push forward on it to highlight the option you want, then press the button. If you're using the keyboard, use the up and down arrow keys to highlight the option you want, then press *return* to make your selection.

(**Note:** Both players can use the up and down arrow keys to highlight selections and the *return* key to make selections while at any of the chalkboard menus.)

A new chalkboard then appears. What you see depends on which type of action you've selected.

If you selected **PRACTICE** or **GAME** you are prompted to select between **ONE-PLAYER** or **TWO-PLAYER** action. You should now skip to "Practice Options" to practice or "Game Options" to play a real game.

If you selected **DEMO**, the computer controls all players, and you're allowed to choose between **SELECTED PLAYERS** or **RANDOM PLAYERS**.

When you select **RANDOM PLAYERS**, the computer picks both players for both teams, then displays a chalkboard showing who was drafted. Press *return* to start the game.

When you select **SELECTED PLAYERS**, a chalkboard displaying the names of 10 players appears, and you're allowed to pick both players of both teams. You're prompted to first pick **TEAM ONE PLAYER ONE** and **TEAM ONE PLAYER TWO**, then repeat the process for **TEAM TWO PLAYER ONE** and **TEAM TWO PLAYER TWO**.

To make your selections, use the joystick or appropriate up or down key to highlight the player you want. Then press the button (with the joystick) or *return* to make your selection.

After you've selected a player, highlight **CONTINUE** and press *return* or the joystick button to move to the next chalkboard.

You'll then see a screen that confirms your choices and tells you what color jersey each player will wear when play begins.

Press *return* to start the game. The computer-controlled cagers will play four six-minute quarters, moving up and down court automatically each time the ball changes hands.

You can pause play by pressing *esc* (this does *not* stop action if a player is shooting). To return to the initial chalkboard menu and select another game before the demo contest is complete, press *control* and the *r* key together.

Practice Options

No one wants to hit the courts cold. Just as in real basketball, it's a good idea to warm up a little before playing a game, so you may want to select **PRACTICE** from the opening chalkboard menu. *Two-on-Two* offers you two practice modes: **ONE-** and **TWO-PLAYER**.

Use the joystick or the up and down arrow keys to highlight the option you want, then press the joystick button or *return*.

ONE-PLAYER (one player on the court by himself)

You can practice with either the keyboard or the joystick; use the up and down arrow keys to highlight your choice—**JOYSTICK** or **KEYBOARD**—then press *return* to practice. See "Joystick and Keyboard Controls" for instructions on controlling your player.

If you selected **JOYSTICK**, make sure your joystick is plugged into your computer's joystick port. You can practice shooting inside and outside and work on your hook shots, jump shots, slam dunks, tip-ins, and rebounds. The scoreboard shows you how many points you've run up during this practice session. When you hit a basket or toss the ball out of bounds, the ball is automatically returned to you. Press *esc* to return to the chalkboard menus when you're through practicing.

TWO-PLAYER (two players on the court)

Player One uses the joystick, Player Two the keyboard in two-player practice games. Notice that Player One is always in the *blue* jersey, Player Two in *light red*. You can practice different shots, from hooks to dunks, as well as dribbling, rebounding, and tip-ins. (All tip-ins are scored to the shooter.) You can play straight one-on-one or other "pick-up" games such as "Around the World" and "HORSE."

How to Play "Around the World." Player One tries a shot from the baseline—say, at the edge of the key (the key is the area between the inner white line and the basket—see the illustration on page 21). Every time the player makes a basket, he or she moves further along the edge of the key, working around the key to the baseline on the other side of the basket. If Player One misses a shot, Player Two gets a turn. When a player misses a shot, he must shoot again from the same spot on his or her next turn, and stay in that spot until he or she makes a basket. The first player to go "Around the World" wins.

How to Play "HORSE." Player One makes a shot from anywhere on the court. Player Two must then make the same shot or he will get an "H." When Player One misses, Player Two can make a shot from wherever he or she wants, and Player One has to make the same shot. Every time a player misses, he gets another letter until the word HORSE is spelled. Whoever gets all the letters first, loses. (Note: The letters in HORSE do not appear on the screen. You must keep track of the "score" yourself).

As with the ONE-PLAYER option, each basket you hit is recorded on the scoreboard, and there are no fouls or time clock.

To leave the practice game and return to the chalkboard menus, press *esc*.

The Scouting Report

Once you're warmed up and ready to play ball, you still have to rate your playing abilities on a screen called The Scouting Report. It might look like this:

INSIDE.....	2	OUTSIDE.....	6
DRIBBLING...	3	QUICKNESS...	5
STEALING....	5	JUMPING.....	3

RACE: BLACK/(WHITE)

INSIDE refers to your shooting accuracy inside the key.

OUTSIDE refers to your shooting accuracy outside the key.

DRIBBLING rates your maneuverability with the ball.

QUICKNESS rates your maneuverability both on defense and when you're not handling the ball on offense.

STEALING rates your ability to outmaneuver the ball handler and steal the ball.

JUMPING rates your ability to block shots and come down with rebounds.

The highest rating you can give yourself is 6 (very skilled), and the lowest is 2 (minimally skilled). Notice that **INSIDE** and **OUTSIDE** are grouped together, as are **DRIBBLING** and **QUICKNESS** and **STEALING** and **JUMPING**. Within each of these three groupings, the total skill level always equals 8.

So if you choose to rate yourself 3 as an outside shooter, you must be a 5 inside. If you choose a 6 rating at stealing, you'll only be a 2 at jumping. After all, you can't be great at *everything*. Remember, too, that in a game situation you'll want to select your offensive and defensive strategies according to your strengths and weaknesses.

Game Options

TWO-PLAYER HEAD-TO-HEAD

Each player has a computer teammate. Each player names his team, then types in his own name and rates himself when the Scouting Report screen appears (see page 7). (When entering your name or a team name, you may use up to 12 letters.)

Player One uses the joystick to highlight the choices and the joystick button to change the ratings and move between **BLACK** and **WHITE**. Player One then uses the joystick to highlight **CONTINUE** and presses the button to make the selection.

Player Two uses the up and down arrow keys to highlight the choices and the *return* key to change the ratings and move between **BLACK** and **WHITE**. Player Two then uses the arrow keys to highlight **CONTINUE** and presses *return* to make the selection.

Each player also picks a computer teammate from the Player Draft, which includes ten pros, each one patterned after a real-life basketball superstar. (For details of the Player Draft, see page 17.)

A **STARTING LINEUP SUMMARY** screen lists player names, with corresponding uniform colors, and shows which team is "home" and which is "visitor."

TWO PLAYER TEAMMATES

When you select this option, you and a friend team up against a hard-driving computer team. You first type in a **TEAM NAME** of 12 letters or less, then pick a **DIVISION** to play in. The division you choose determines the caliber of your computer opponents. **NORTH** is the easiest division, **SOUTH** is tougher, **EAST** is tougher still, and **WEST** is the toughest of all.

Take a look at the chart on page 11. It gives you a breakdown of all the teams in every division. Notice that the rating totals are higher in the tougher divisions. For example, in the easy North, the **INSIDE** and **OUTSIDE** ratings total 7; but in the tough West, they total 10. Since the players in the West are better, the West teams have higher ratings.

When Player One types in his name (12 letters or less) and presses **RETURN**, the Player One Scouting Report allows Player One to rate his abilities. Then Player Two types in his name and rates himself. In this mode, Player One has the light blue jersey, Player Two the dark blue one.

ONE PLAYER EXHIBITION GAME

You and your computer-controlled teammate challenge a computer team. Type in your **TEAM NAME** and **YOUR NAME** and pick a **DIVISION**. Again, the division you select determines how tough your opponents will be. Next, rate yourself on inside and outside shooting, dribbling, stealing, quickness, and jumping.

Finally, you select your computer-controlled teammate from the Player Draft. Do you want the great outside shooting of Larry Berg or the dynamite inside moves of Kareem Ugrin? Strategy is important, because you'll want a player whose talents will complement your own, someone who's going to be effective against your opponents. (Again, use the chart "Your Computer Opponents" to scope out your opponents' strengths and weaknesses).

Your team will always be the **HOME** team, with the player you control in the light blue uniform.

ONE PLAYER LEAGUE PLAY

This game mode allows you and a computer teammate to play in league competition that can take you all the way to the GBA Championship.

You first choose a division to play in (North, South, East, or West), then play a five-game season against the other five teams in that division.

Once you've selected League Play, the computer screen will ask if you want to **GET TEAM** or assemble a **NEW TEAM**. If you select **GET TEAM**, you'll continue to play with a team you've already created—that is, your current team. Select **NEW TEAM** to create a new team; your old team (if you had one) and its league record will be *erased* from the game disk. In other words, you can have only one team at a time. (If you try to create a new team and there's already a team on the disk, the screen will display the message "Warning: Selecting new team will erase your current team.") However, you can go from League Play to Exhibition Play without erasing your League Team from the game disk.

You'll play a five-game schedule. The computer will select your opponents within your chosen division until you've played all five. Playing in the easier divisions will of course mean easier games—until you get to the playoffs. At the end of the season, the computer will compare your win/loss record with the records of the other teams in your division. If you have the best divisional record, or if you're tied for the division lead and have beaten your co-leader, you'll advance to the playoffs. The playoff schedule is set up so that the easiest division (North) plays the hardest division (West) in Game 1; in Game 2, South meets East. The winners from Game 1 and Game 2 then meet in the GBA Championship Game.



John Madland. An excellent defensive player. When Madland's on the court, expect lots of turnovers. Also a dynamite outside shooter.

Larry Berg. If you want a teammate who can do it all, Berg's your man. A real team player who knows how to win. Great all-around abilities. Berg can shoot and pass with either hand. He received the GBA Most Valuable Player Award two years in a row.

Kareem Ugrin. Some say he's getting too old, but Ugrin seems to just get better. A great inside shooter with an almost unstoppable hook shot, Ugrin recently became the highest scorer in GBA history. He's also a ferocious rebounder.

Walt Barnett. A superb rebounder and one of the best defensive players around.

Julius Keith. Dr. K. When he's not selling basketball shoes or soft drinks on TV, Keith can be found driving defenders crazy on the court. He averages over 30 points a game and has some of the best moves in the game.

Oscar Dunbar. A player with all the right moves, Dunbar is considered the best guard of all time. A great player at any position, he's equally adept at inside and outside shooting.

Wilt Dulmage. a.k.a. Wilt the Tilt. This man is great at blocking shots and coming down with the ball. Also one of the few unstoppable inside shooters.

The Super Teammate Player Draft chart rates the talents of your computer teammates. The numbers indicate their skills at inside and outside shooting, dribbling, stealing, quickness, and jumping. Unlike the ratings for yourself, these are fixed. Because all these stars are excellent players, they rate no lower than 4. A 6 is the highest rating a player can have.

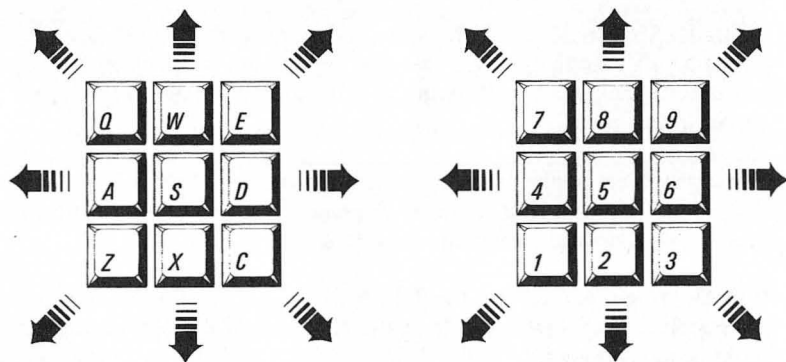
Notice that the total within each grouping (Inside and Outside, Dribbling and Stealing, and Quickness and Jumping) totals 10 for your superstar teammate, as opposed to 8 for your other player.

How to Pass, Shoot, and Move Around

Joystick and Keyboard Controls

In one-player games against a computer-controlled team, you may use either a joystick or the keyboard to move your player around. In two-player games, the home team player uses the joystick and the visiting team player uses the keyboard.

The joystick works as described in “Passing” and “Shooting.” The keyboard works as shown below; you may use either cluster of keys shown.



To move your on-court player in a particular direction, tap and release the key corresponding to that direction. Press the *S* or *5* key to stop the player. Use the *option* key as your “fire” button to jump and shoot.



Passing

Naturally, good teamwork means getting the ball to your teammate when he’s in the open. And to do that, you’ve got to become a good passer.

To pass to your teammate when you have the ball, quickly press and *immediately release* the joystick button. If your teammate has the ball and you want *him* to pass to *you*, quickly press the button. Your teammate will usually pass you the ball, but not always—after all, any player can become a ball hog now and then. Your teammate may also pass the ball to you if he sees that you’re open, even if you don’t press the joystick button—unless you’re moving, in which case he’ll never pass to you unless you press the joystick button. If you pass to your computer teammate while he’s moving, he’ll stop to try to catch the ball.

In order to catch the ball you must be directly in line with it. Otherwise the ball will go out of bounds or will be stolen by your opponents.

Shooting

Shooting Basics

When you have the ball and want to make a shot, first hold down the joystick button. Your player will begin his shot by jumping and will release the ball at the same time you release the button. You must time the release to the jump. If you release the ball at the top of the jump, you have a better chance of scoring.

So your success in shooting depends on your ability to release the joystick button at just the right moment. If you look very closely, you’ll notice that at the very top of his jump your player will cock his wrist slightly, preparing to shoot. It is at this moment that you should release the button. If you release the button too early or too late, you will still make some of your shots, but a smaller percentage than if you time it perfectly. You should also be aware that if you fail to release the button before your player comes back to the floor,

you'll be charged with traveling (See "Penalties," page 24). In addition to your timing, the other factor that will determine your shooting percentage is your Player Scouting Report—that is, your rating as an inside and outside shooter.

Hook Shots

To make a hook shot, you must be downcourt, near the baseline, with your back to the basket (as you look at your player on the screen, he must be facing 9 o'clock or 3 o'clock). With a hook shot, the ball is released as the player's arm "hooks" over his head. The advantage of this type of shot is that it cannot be blocked.

Slam Dunks

A slam dunk may be the most satisfying shot in basketball. What could be better than actually stuffing the ball through the hoop? To slam dunk, you *must* have a 4, 5, or 6 rating as an inside shooter. You must be at the baseline, as far downcourt as you can go, and you must shoot when you're in one of three areas: under the basket, half a step left of low post left (LPL), or half a step right of low post right (LPR) (see "Zones on the Court," page 21). Finally, there must be *no defenders* under the basket. If all of these conditions are met, a slam dunk will *always* be successful.

Tip-Ins

If an offensive player grabs a rebound while directly facing the basket (as you look at him on the screen, facing 12 o'clock with his back to you), he'll tip the ball in for a basket. As long as the player is facing the basket and underneath it, the tip-in will be automatic if you make your player jump. Again, only an offensive player can tip the ball in. (In the practice mode, either player can tip the ball in).

Rebounds

A player can rebound only when he's in the area immediately surrounding the basket. To rebound, press the joystick button in the same way you do to make a shot—your player will jump for the ball. Timing your jump is the key to successful rebounding.

Shooting Percentages

Nobody can make every kind of shot every time. But you can increase your shooting percentage by working on the timing of your release. (Of course, it also helps to have a high rating). The following charts show the percentage of outside and inside shots you'll make based on the timing of your release and your outside shooting ability.

Outside Shooting Percentages

Outside Rating:	6	5	4	3	2
When release is:					
very early	10%	10	10	10	10
early	30%	20	10	10	10
a little early	50%	40	30	20	10
perfect	70%	60	50	40	30
a little late	60%	50	40	30	20
late	40%	30	20	10	10
very late	20%	10	10	10	10

Inside Shooting Percentages

Inside rating:	6	5	4	3	2
very early	30%	20	10	10	10
early	50%	40	30	20	10
a little early	70%	60	50	40	30
perfect	90%	80	70	60	50
a little late	80%	70	60	50	40
late	60%	50	40	30	20
very late	40%	30	20	10	10

3-Point Shots

If a player shoots a basket from outside the white 3-point line (see illustration on page 21), that basket is good for 3 points instead of the usual 2. Successful 3-point shots are based on a player's outside shooting rating and the timing of his release. However, if a player shoots from outside the white 3-point line, the odds of that shot's being good are only *half* the odds of a regular outside shot. For example, if a 6-rated outside shooter releases the ball perfectly from beyond the 3-point line, he has only a 35% chance of making that shot.

Shooting From Under the Basket

Whenever a player shoots from directly under the basket, his chance of scoring is based only on his inside rating, not on his timing. As long as he releases the ball before he's called for traveling, it's assumed that his timing is perfect.

Notes on Defense: Stealing the Ball and Blocking Shots

To steal the ball from the offense, you must "bump" the ballhandler *on the side on which he's dribbling or holding the ball*. Any player's success at stealing the ball will be based on his rating at STEALING—see "The Scouting Report," page 7.

To block a shot, move in close to the ballhandler and press your joystick button to jump just as he goes up for a shot. Your success in blocking the shot will depend on how close you are to the ballhandler and your rating at JUMPING—see "The Scouting Report" on page 7.

Your Computer Teammate

Your computer teammate is an intelligent player. If he's under the basket, he'll shoot. If he sees that *you're* open under the basket, he'll pass the ball to you. If the clock is about to run out (either the 24-second shot clock or the quarter clock), he'll shoot if he has the ball. If he's being covered and he realizes he can't drive to the basket, he'll pull up and shoot from as close as he can get.

Remember, just as in real basketball, the key element in *Two-On-Two* is *teamwork*. Your computer teammate is designed to work *with* you to beat your opponents. No matter how good you are as an individual player, you'll never make it to the GBA Championship unless you learn to play as a team.

The Player Draft

After you've rated your abilities, you get to draft a computer-controlled teammate. In the two-player mode, each player gets to draft a computer teammate unless you're playing the TWO PLAYER TEAMMATES option. You have ten players from which to choose, each patterned after a real basketball superstar.

When the player draft screen appears, you'll see ten names in white letters, with the two "pointer" basketballs on either side of a name. Use your joystick to line up the basketballs next to the name of the player you want, then release the joystick and press the joystick button. This will highlight your choice in yellow. Finally, move the balls down to the word CONTINUE and press the joystick button to go to the next screen.

Your Superstar Teammates

Here are the computer stars you can play with:

Magic Lyndon. One of the best players in the game, famous for his sleight-of-hand passing. Now you see it, now you don't. Magic provides that extra magic that can take you all the way to the GBA Championship.

Jerry Orr. A consistently high scorer, Orr has been known to score over 50 points in a game. He knows how to draw fouls from opponents and almost never misses from the free throw line.

Elgin Cutter. Some say he's the best pressure player in the game. He once scored 61 points in a GBA playoff game—a record. Cutter has some deadly inside moves.

Your Computer Opponents

Divisions	Teams:	OUTSIDE		INSIDE		STEALING		JUMPING	
		Player 1	Player 2	Player 1	Player 2	Player 1	Player 2	Player 1	Player 2
North	Cougars	4	3	4	3	4	3	3	4
	Unicorns	2	5	5	2	2	5	5	2
	Wildcats	5	2	2	5	5	2	2	5
	Sharks	4	3	3	4	3	4	4	3
	Generals	3	3	3	3	3	3	3	3
South	Dazzles	4	4	4	4	5	3	3	5
	Hammers	3	5	5	3	3	4	4	3
	Kernals	5	3	3	5	5	2	2	5
	Steamers	5	3	3	5	2	5	5	2
	Masters	3	5	5	3	4	3	3	4
East	Condors	5	4	4	5	5	3	3	5
	Mystics	4	5	5	4	4	4	4	4
	Marvels	4	4	4	5	3	5	5	3
	Hawks	4	5	5	3	3	5	5	3
	Wizards	5	4	3	5	4	4	4	4
West	Stars	5	5	5	5	5	5	5	5
	Dragons	5	5	5	4	5	5	5	5
	Cosmics	5	5	4	5	5	5	5	5
	Waves	4	5	5	5	5	4	4	5
	Lazers	5	4	5	5	4	5	5	4

Superstar Teammate Player Draft

THE PLAYERS:	Outside	Inside	Dribbling	Stealing	Quickness	Jumping
Magic Lyndon	5	5	5	5	5	5
Jerry Orr	6	4	5	5	6	4
Elgin Cutter	4	6	5	5	6	4
John Madland	6	4	4	6	5	5
Larry Berg	6	4	4	6	4	6
Kareem Ugrin	4	6	5	5	4	6
Walt Barnett	5	5	4	6	4	6
Julius Keith	4	6	6	4	5	5
Oscar Dunbar	5	5	6	4	5	5
Wilt Dulmage	4	6	4	6	4	6

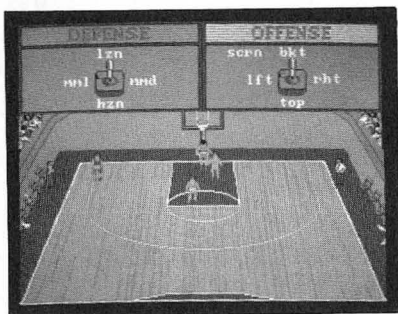
Calling Plays

In all the game modes except two-player teammates, you must choose an offensive and defensive alignment every time you're on offense or defense. The **PLAYCALLING SCREEN** comes up whenever there's a *change of possession* because of a basket, steal, defensive rebound, or penalty.

Although the game is actually played on a full court, you see only half the court at a time. Every time there's a change of possession or a basket is good, the players run down the court and the offense brings the ball up from mid-court.

The playcalling screen replaces the scoreboard for about seven seconds while the players automatically run down the court and bring the ball back into play. The playcalling screen disappears when the ball handler crosses the center court. So you have seven seconds to select a play. If you fail to select a play, the computer will automatically pick one for you. (On defense the computer will pick **LOW ZONE (LZN)** and on offense it will pick **BASKET (BKT)**).

As you can see in the screen below, the playcalling screen is divided into **OFFENSE** and **DEFENSE**. For offense the screen shows a picture of your joystick surrounded by the abbreviations **BKT,RHT, TOP,LFT**, and **SCRN**, which stand for the five offensive plays you can choose from. For defense the screen shows a picture of your joystick surrounded by the abbreviations **LZN,HZN,MMD**, and **MML**, which stand for the four defensive alignments you can choose from.



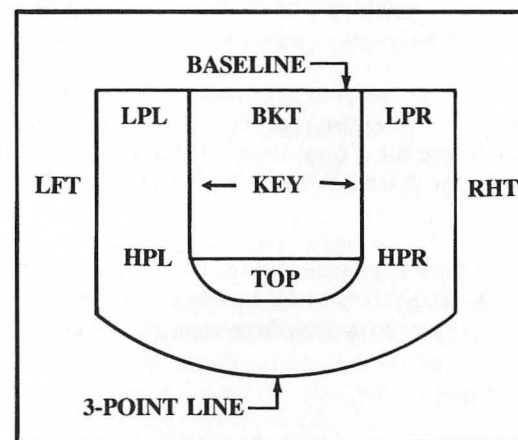
You select a play by moving your joystick forward, back, right, or left to "point to" the play you want: forward for **BKT** or **LZN**, back for **TOP** or **HZN**, right for **RHT** or **MMD**, and left for **LFT** or **MML**. On offense you can also use the joystick button if you want to select the **SCRN** play.

If you've called a play, but change your mind while the playcalling screen is still visible, simply push the joystick in the direction of the *new* play you want. Whenever you call a play, you'll hear a tone at the same time the word **OFFENSE** or **DEFENSE** flashes.

Whenever you call a play, whether on offense or defense, you are telling your computer teammate what to do.

Following is a complete rundown of the plays. It will help you to understand the plays if you also study "Zones on the Court":

Zones on the Court



Offensive Plays

You have five offensive plays from which to choose:

Left Wing	LFT
Right Wing	RHT
Top of Key	TOP
Basket	BKT
Screen	SCRN

Left Wing (LFT). Your teammate runs to the high post left or high post right (**HPL** or **HPR**) and stays there for one second. Then he runs to the left wing (**LFT**), stays there for two to four seconds, and runs a random pattern on the left side of the court.

Right Wing (RHT). Your teammate begins by running to the high post left or high post right (**HPL** or **HPR**) and waits there for one second. Then he runs to the right wing (**RHT**) and waits there for two to four seconds before running a random pattern on the right side of the court.

Top. Your teammate runs to either the right or left high post (**HPR** or **HPL**), waits there for a second, and then runs to the top. He stays there for two to four seconds and then runs a random pattern at the top of the key.

Screen (SCRN). You use your teammate as a screen to block out any defenders trying to cover you. Your teammate runs to **HPL** or **HPR** and stays there for six seconds, allowing you to dribble around him as he blocks the defender. Then he runs a two-step pattern between the high posts.

Basket (BKT). Your teammate runs to the high post left or right (**HPL** or **HPR**), then drives under the basket. He waits there for two seconds and then runs a random three-step pattern under the basket.

Defensive Plays

You have four defensive plays to choose from:

Low Zone	LZN
High Zone	HZN
Man-to-Man Light	MML
Man-to-Man Dark	MMD

Low Zone. When you call low zone, your teammate will stay in the key (between the basket and the inner white line on the court). When an offensive player enters his zone, he covers him man-to-man. If the offense floods the low zone (which means *both* offensive players enter the key), your teammate will cover the ball handler. In this case, you should cover the offensive player without the ball. When your opponents are not flooding the low zone, your teammate always takes the man in the low zone, and you take the man outside the key in the high zone.

High Zone. If you assign your teammate to the high zone, he covers the ball handler when that player is in the high zone. When the ball handler enters the low zone area around the key, *you* cover him, and your teammate covers the player without the ball.

Man-to-Man Light. Your teammate covers the opposing player who wears the light-colored uniform. He stays with that player everywhere on the court. You cover the player in the dark uniform. The goal in man-to-man coverage is to stay between the man you're guarding and the basket, trying to keep him from getting under the basket and making an easy shot.

Man-to-Man Dark. This is the reverse of man-to-man light. Your teammate covers the man in the dark uniform, and you cover the man in the light uniform.

Strengths and Weaknesses of Zone Defense

The zone defense is very effective against inside shooters. If the ball handler breaks away from the man playing the high zone, the man playing the low zone can usually cover the ball handler before he can get into position near the basket. The weakness of the zone defense is that one defender is always in the key, resulting in a two-on-one situation outside the key. This sometimes means that one of the offensive players can take an easy outside shot.

If you're playing against the computer, it's easier to beat the computer when you play a zone defense. If you want a more challenging game, play man-to-man.

Playcalling and Loose Ball

If nobody grabs a rebound and the ball is loose, the computer will sometimes allow you to regroup your offense and call another play. You'll know this is happening if the playcalling screen appears.



Penalties

Fouls

Bumping into an opposing player continuously for more than one second results in a foul in the following situations:

A defensive foul occurs when one of the defensive players bumps into the ball handler. The penalty is either ball out of bounds to the offense or free throws.

Charging occurs when the ball handler bumps into a defensive player. The penalty is change of possession or free throws.

Fouls and other penalties are displayed on the scoreboard in flashing letters right after they occur. However, if a player is fouled while shooting, the foul won't be displayed on the scoreboard until after the shot has either gone in for a field goal or missed. Fouling the shooter results in one free throw if the basket is good and two free throws if he misses his shot.

The number of **TEAM FOULS** is also displayed on the scoreboard. Teams get five fouls per half; the count is reset to zero at halftime. If a team accumulates more than five fouls in a half, this results in bonus free throws for the other team.

Other Violations

Traveling is called if you jump to shoot but don't release the ball in time. It won't be called if your shot is blocked by an opponent and you come down with the ball. Traveling results in a change of possession.

The Three-Second Rule is invoked if an offensive player stays inside the key for more than three seconds at a time. However, when the ball is in the air or up for grabs, all players can stay in the key for as long as they like, until someone comes up with the ball. Staying in the key too long results in change of possession.

The 24-Second Shot Clock gives the offensive team 24 seconds to make a shot after they bring the ball into play. The scoreboard has a **SHOT CLOCK** which counts down the seconds. Failure to make a shot in time results in change of possession.

Here's a summary of all violations and penalties:

With three or fewer team fouls:

Fouling the Shooter:

if ball goes in 1 free throw

if ball misses 2 free throws

Fouling the Ball

Handler Ball out of bounds to the offense

Charging Change of possession

Three Seconds in Key Change of possession

24-Second Clock Change of possession

With more than three team fouls:

Fouling the Shooter:

if ball goes in 1 free throw

if ball misses 2 free throws

Fouling the Ball

Handler 2 free throws

Charging 2 free throws

Three Seconds in Key Change of possession

24-Second Clock Change of possession

A word about free throws. Players don't have control over free throw accuracy. It's based on the outside shooting rating. To make a free throw, just push the joystick button and release it. All players can rebound after the last free throw attempt.

The Quarter Clock and Overtime

You'll play four 6-minute quarters in each game. If the teams are tied at the end of the fourth quarter, you'll automatically go into overtime, which is another 6-minute quarter. The amount of time left

in each quarter is shown on the clock in the middle of the scoreboard. At the end of each quarter, a buzzer rings and the screen displays which quarter has just been played. You then go immediately into the next quarter.

At the start of the game, the home team always takes the ball out (Player One is always the home team). The visiting team brings the ball into play in the second quarter. The home team again takes the ball out when the third quarter begins, and the visiting team starts off the fourth quarter.

Calling Timeouts and Pausing the Game

To pause the game, simply press the *esc* key on your keyboard; **TIMEOUT OR ESC TO RESUME** will be displayed on the scoreboard. If you merely want to pause the game, press the *esc* key when you're ready to resume.

You can call a timeout only when you're on offense. If you want to call a timeout, first press the *esc* key, then press the joystick button. Each team is allowed five timeouts per half. On the scoreboard you'll notice five little lights on the **HOME** and **VISITOR** sides of the board. Each time you call a timeout, one of the lights will go out.

Calling timeouts saves precious seconds at the end of the game. If your team is behind and the clock is about to run out, you should call a timeout right after you've called a play. When you call a timeout, your players don't have to take the time to run down court and set up the play; they'll just appear on the court, in position, when play resumes.

To quit a game in progress and start over, press *esc*, then **CTRL-R**.

After the Game

At the end of every game, you can read all about it. The sports page of the *Gamestar Gazette* appears on the screen with the following boxscore writeups: the team names, the final score, the total field goals for each team, shooting percentages, rebounds, steals, blocked shots, and the name of the leading scorer. Here's what the numbers mean:

Field Goals. This is the total number of baskets that each team made. Each basket is worth either 2 or 3 points, depending on where the player was on the court when he made the shot. Free throws do not count as field goals.

Percentage. The field goal percentage is calculated by taking the total number of actual field goals and dividing it by the total number of field goal attempts. That number is the team percentage.

Rebounds. Every time your team pulls down a rebound, it's recorded here.

Steals. This number records the number of times your team stole the ball from the opposition.

Blocked Shots. There are two types of blocked shots. After the shot is blocked, either the defender comes down with the ball or the offensive player retains possession. Blocked shots are only recorded here when the defender gains possession of the ball.

Assists. This is the number of times a player's passing sets up a teammate for a basket. To get credit for an assist, you must pass the ball to your teammate, who can dribble the ball only one time before putting the ball in the basket.

Fouls. The number of personal fouls—for example, charging and hacking—each player commits is listed here.

Leading Scorer. The top scorer's name will be displayed with the number of points he scored.

GBA Championship Basketball also gives you a breakdown of each teams' statistics. Press *return* and you'll see a linescore similar to:

Pioneers

	PTS	FG	%	RB	ST	BS	AS	FO
Player One	10	05	35	4	2	5	2	4
Player Two	20	10	45	5	4	5	4	3

Sharks

Player One	10	05	35	4	2	5	2	4
Player Two	20	10	45	5	4	5	4	3

By Quarters 1 2 3 4 F

Pioneers	12	12	13	10	47
Sharks	10	10	12	14	46

Attendance 17,547

Press Button to Continue

In this linescore, PTS stands for points scored, FG for field goals (that is, baskets) made, % for shooting percentage (baskets made divided by shots attempted), RB for rebounds, ST for steals, BS for blocked shots, AS for assists, and FO for fouls.

This linescore also shows you the score at the end of each six-minute period and the final tally. It also lists the attendance for today's game, in this case, 17,547.

If the game was part of league play, *GBA Championship Basketball* lists the division standings after you press *return* to continue. It also tells you who your next opponent is, then prompts you to press the joystick button (or *return*) to return to the chalkboard menu and start another game.

To Play Another Game

When a game ends, press the joystick button (or *return*) to return to the chalkboard menus. If you've just played any game (except in league play) and want to play the same game again, you don't have to type in your name again or select a new computer teammate unless you want to. Just press *return* or highlight **CONTINUE** and press the joystick button as you move quickly through the menus.

