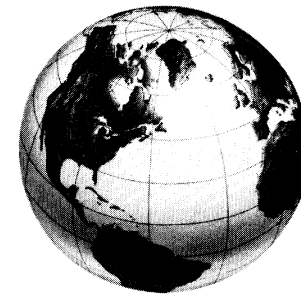


GeoPuzzle USA™
User's Guide
Version 1.0

*PC Globe, Inc.
4700 South McClintock
Tempe, Arizona 85282
(602) 730-9000
Facsimile (602) 968-7196
Technical Support (602) 730-0765*



©1990 PC Globe, Inc. All Rights Reserved.
"GeoPuzzle USA" and the "Globe" logo are trademarks
of PC Globe, Inc.

Acknowledgements

PC Globe, Inc. acknowledges the following people for their invaluable contribution to this software product:

- Program Design - John Schappert, John Tomchay
- Programming - John Schappert, John Tomchay
- Computer Graphics - Greg Humphrey, Eric Youngquist
- Research - Peter Chadwick, Gilbert Daniels, Martha Fuehrer, Roy Kessler
- Technical Documentation - Andre Bormanis, Jon Ryder

While every effort was made to verify all data presented in GeoPuzzle USA, because of human factors, and the possibilities of error inherent in the compilation of a program of this type PC Globe, Inc. cannot assume liability for the correctness of the information. Should it appear that any of the information is erroneous, please inform a representative of PC Globe, Inc. immediately so that a review of the information can be made. Any errors will be corrected in the update or edition following detection.

© 1990 PC Globe, Inc. All Rights Reserved. "GeoPuzzle USA" is a trademark of PC Globe, Inc. No part of this program may be reproduced in any manner whatsoever without the written permission of PC Globe, Inc.

Apple Computer, Inc. ("Apple") makes no warranties, expressed or implied, including without limitation the implied warranties of merchantability and fitness for a particular purpose, regarding the Apple software. Apple does not warrant, guarantee or make any representations regarding the use or the results of the use of the Apple software in terms of its correctness, accuracy, reliability, currentness or otherwise. The entire risk as to the results and performance of the Apple software is assumed by you. Because exclusion of implied warranties is not permitted by some states, the above exclusion may not apply to you.

In no event will Apple, its directors, officers, employees or agents be liable to you for any consequential, incidental or indirect damages (including damages for loss of business profits, business interruption, loss of business information, and the like) arising out of the use or inability to use the Apple software even if Apple has been advised of the possibility of such damages. Because some states do not allow the exclusion or limitation of liability for consequential or incidental damages, the above limitations may not apply to you.

Table of Contents

1. Introduction	3
2. System Requirements	3
3. Getting Started	3
4. Installing GeoPuzzle USA on a Hard Disk	4
5. Running GeoPuzzle USA	4
5.1 Floppy Disk Systems	4
5.2 Hard Disk Systems	4
6. GeoPuzzle USA Main Menu	5
7. Main Menu Choices	6
7.1 Help	6
7.2 Puzzle	6
7.3 MapFacts	7
7.4 StatMaps	7
7.5 Options	8
7.6 MapQuiz	9
7.7 About	10
7.8 Hall of Fame	10
7.9 Quit	10

1. Introduction

GeoPuzzle USA is a multi-level puzzle/quiz game for Apple® IIgs, IIe and IIc computers. With GeoPuzzle USA, you will learn and have fun by constructing a U.S. map state-by-state, answering quiz questions, viewing statistical maps and reading data screens about the states.

2. System Requirements

For the Apple IIgs version:

- Apple IIgs computer, with minimum 512K RAM memory

For the Apple IIe/IIc version:

- Apple IIe or IIc computer, with minimum 128K RAM, double high resolution graphics

3. Getting Started

- Fill out and mail in your registration card to PC Globe, Inc. Registration entitles you to special offerings on future products and updates.
- Make a backup copy of the GeoPuzzle USA master disk. GeoPuzzle USA is unprotected and ProDOS compatible. On an Apple IIgs computer, use any ProDOS copy program—such as the Finder or System Utilities – to make your backup copy. If you are unfamiliar with ProDOS, consult your ProDOS manual.

On an Apple IIe or IIc computer, be sure to copy both sides of the 5 1/4" disk.

Use a disk notcher to copy to the backside of your target disk, or copy the backside of the master disk to the front side of a second disk.

- After you've made your backup disk(s), put the original master disk in a safe place. Only use the backup disk(s) to run the program. Never use the original master disk.

The backup disks you create are for your own use only. It is a violation of the GeoPuzzle USA copyright to distribute the GeoPuzzle USA disk or any of its files.

4. Installing GeoPuzzle USA on a Hard Disk

Since GeoPuzzle USA is ProDOS and GS/OS compatible, the program can be run from a hard disk. To transfer the program to a hard disk, first create a folder on the hard disk named GEO.PUZZLE.USA, then copy all of the GeoPuzzle USA master disk files (except the ProDOS file) to this folder.

If you are using GS/OS, the P8 file should be in the system folder. If it isn't, copy the P8 file from your system master disk to the system folder. For more information on creating folders and copying files to a hard disk, see the ProDOS or GS/OS manuals.

5. Running GeoPuzzle USA

5.1 Floppy Disk Systems

Apple IIe/IIc Systems

Insert the GeoPuzzle USA backup disk in drive 1, then turn on the computer. As soon as the program has been loaded into memory, it will prompt you to select your input device. Four devices will be listed: Mouse, Koala Pad, Joystick, and Keyboard. Type the number corresponding to your input device. Next, the program will prompt you for your name. Type your name, then press <return>. The main GeoPuzzle USA menu will then be displayed.

Apple IIgs Systems

Insert the GeoPuzzle USA backup disk in drive 1, then turn on the computer. As soon as the program has been loaded into memory, it will prompt you to type your name. Type your name, then press <return>. The main GeoPuzzle USA menu will then be displayed.

5.2 Hard Disk Systems

GS/OS Systems

Turn on your computer. Go to the GEO.PUZZLE.USA folder, then select the GEO.SYSTEM icon. As soon as the program has been loaded into memory, it will prompt you to type your name. Type your name, then press <return>. The main GeoPuzzle USA menu will then be displayed.

ProDOS Systems

Turn on your computer. At the BASIC.SYSTEM prompt, type:

```
PREFIX GEO.PUZZLE.USA <return>  
-GEO.SYSTEM <return>
```

1. Introduction

GeoPuzzle USA is a multi-level puzzle/quiz game for Apple® IIgs, IIe and IIc computers. With GeoPuzzle USA, you will learn and have fun by constructing a U.S. map state-by-state, answering quiz questions, viewing statistical maps and reading data screens about the states.

2. System Requirements

For the Apple IIgs version:

- Apple IIgs computer, with minimum 512K RAM memory

For the Apple IIe/IIc version:

- Apple IIe or IIc computer, with minimum 128K RAM, double high resolution graphics

3. Getting Started

- Fill out and mail in your registration card to PC Globe, Inc. Registration entitles you to special offerings on future products and updates.
- Make a backup copy of the GeoPuzzle USA master disk. GeoPuzzle USA is unprotected and ProDOS compatible. On an Apple IIgs computer, use any ProDOS copy program—such as the Finder or System Utilities – to make your backup copy. If you are unfamiliar with ProDOS, consult your ProDOS manual.

On an Apple IIe or IIc computer, be sure to copy both sides of the 5 1/4" disk. Use a disk notcher to copy to the backside of your target disk, or copy the backside of the master disk to the front side of a second disk.

- After you've made your backup disk(s), put the original master disk in a safe place. Only use the backup disk(s) to run the program. Never use the original master disk.

The backup disks you create are for your own use only. It is a violation of the GeoPuzzle USA copyright to distribute the GeoPuzzle USA disk or any of its files.

4. Installing GeoPuzzle USA on a Hard Disk

Since GeoPuzzle USA is ProDOS and GS/OS compatible, the program can be run from a hard disk. To transfer the program to a hard disk, first create a folder on the hard disk named GEO.PUZZLE.USA, then copy all of the GeoPuzzle USA master disk files (except the ProDOS file) to this folder.

If you are using GS/OS, the P8 file should be in the system folder. If it isn't, copy the P8 file from your system master disk to the system folder. For more information on creating folders and copying files to a hard disk, see the ProDOS or GS/OS manuals.

5. Running GeoPuzzle USA

5.1 Floppy Disk Systems

Apple IIe/IIc Systems

Insert the GeoPuzzle USA backup disk in drive 1, then turn on the computer. As soon as the program has been loaded into memory, it will prompt you to select your input device. Four devices will be listed: Mouse, Koala Pad, Joystick, and Keyboard. Type the number corresponding to your input device. Next, the program will prompt you for your name. Type your name, then press <return>. The main GeoPuzzle USA menu will then be displayed.

Apple IIgs Systems

Insert the GeoPuzzle USA backup disk in drive 1, then turn on the computer. As soon as the program has been loaded into memory, it will prompt you to type your name. Type your name, then press <return>. The main GeoPuzzle USA menu will then be displayed.

5.2 Hard Disk Systems

GS/OS Systems

Turn on your computer. Go to the GEO.PUZZLE.USA folder, then select the GEO.SYSTEM icon. As soon as the program has been loaded into memory, it will prompt you to type your name. Type your name, then press <return>. The main GeoPuzzle USA menu will then be displayed.

ProDOS Systems

Turn on your computer. At the BASIC.SYSTEM prompt, type:

```
PREFIX GEO.PUZZLE.USA <return>  
-GEO.SYSTEM <return>
```

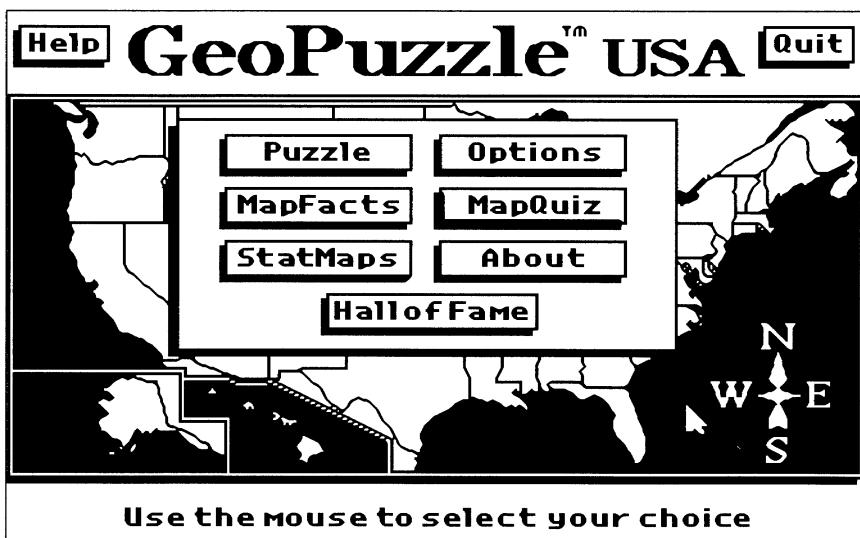
Apple IIe/IIc Systems

As soon as the program has been loaded into memory, it will prompt you to select your input device. Four devices will be listed: Mouse, Koala Pad, Joystick, and Keyboard. Type the number corresponding to your input device. Next, the program will prompt you for your name. Type your name, then press <return>. The main GeoPuzzle USA menu will be displayed.

Apple IIgs Systems

As soon as the program has been loaded into memory, it will prompt you to type your name. Type your name, then press <return>. The main GeoPuzzle USA menu will then be displayed.

6. GeoPuzzle USA Main Menu



The Main Menu is used to select GeoPuzzle USA games, set the level of difficulty of the games, and provide a variety of information about the United States through maps and text screens.

The pointer that appears on the screen can be moved by moving your mouse. On an Apple IIe or IIc, use the input device you selected to move the pointer. If you're using a Koala Pad or Joystick, use button 1 in place of the mouse button. If you're using the keyboard, use the arrow keys to move the pointer, and press the <return> key in place of the mouse button.

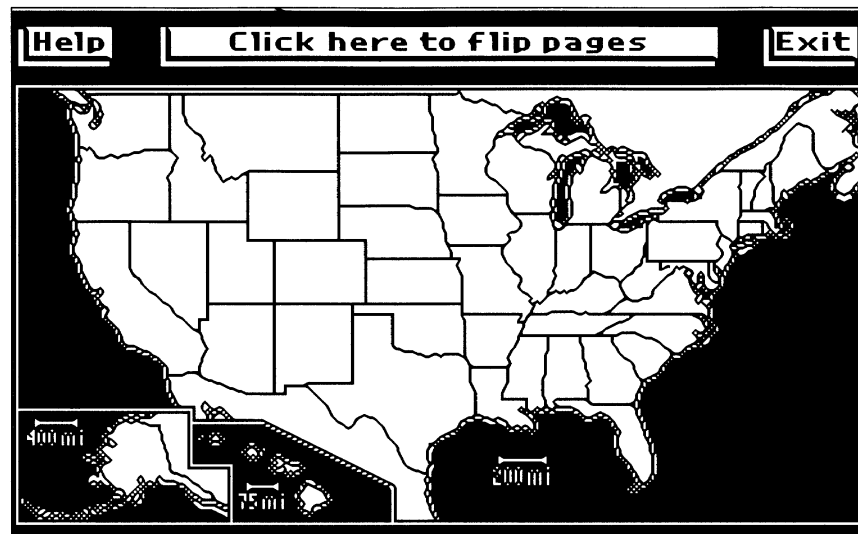
Note: Throughout the rest of the manual make these substitutions if you are not using a mouse as the input device.

7. Main Menu Choices

7.1 Help

HELP provides general information on each of the Main Menu items. Each menu item also has its own Help screen that provides more detailed information about the specific item.

7.2 Puzzle



Novice Level

GeoPuzzle USA will display a map of the United States, with the state borders, but with no states filled in. Click on a state to pick it up and then move the state to its correct position on the map, and click again to release the state. If the state is placed correctly, its name and capital will be displayed. The state may be picked up, repositioned, and dropped until it is put into its correct position. The pieces may be moved freely around the screen. The <spacebar> or the middle button can be clicked on to flip between the map page and the page which contains all of the pieces.

Average Level

At this level, the state pieces may be reversed (like a mirror image) or turned upside down. Use the arrow keys (or, on the Apple IIe or IIc, the closed apple or option button and the arrow keys) to flip the state or turn it right-side up. Also, after you correctly place a state on the map, you must type the name of the state. After you type the name of the state, GeoPuzzle USA will tell you if the name is correct, and then tell you the state's capital city name.

Expert Level

The *EXPERT* Level is similar to the *AVERAGE* Level, but with two differences: 1) the map of the United States contains no state borders to guide you in placing a state; 2) when you correctly place a state on the U.S. map, you must type the name of the state and then the name of its capital.

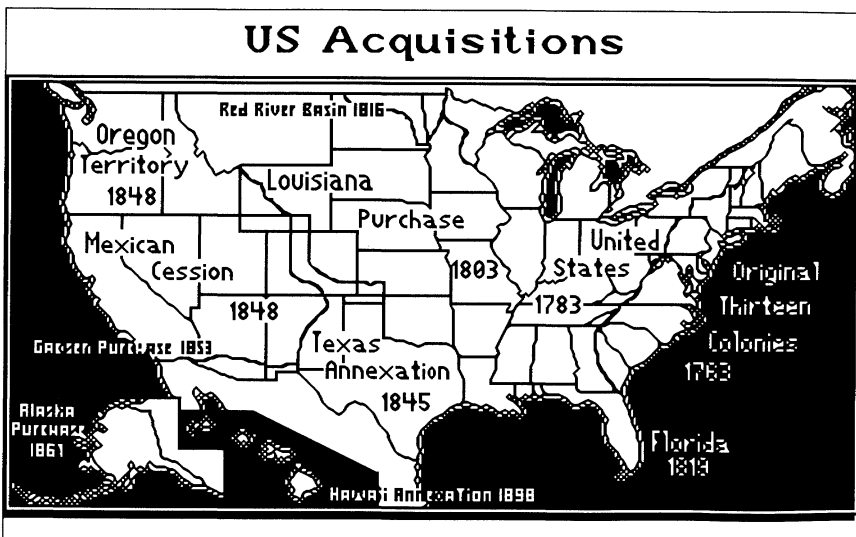
The Puzzle game is finished after you have placed all states correctly. You can also stop the game at any time by clicking on *EXIT*. This will save the pieces in their current locations.

7.3 MapFacts

MAPFACTS displays a map of the United States. Click on any state and a database screen will show you a variety of information about the state you selected.

Each time you select a new state, information will be displayed for that state. If you have a compatible printer connected to slot 1, you can print the screen by pressing the <P> key.

7.4 StatMaps



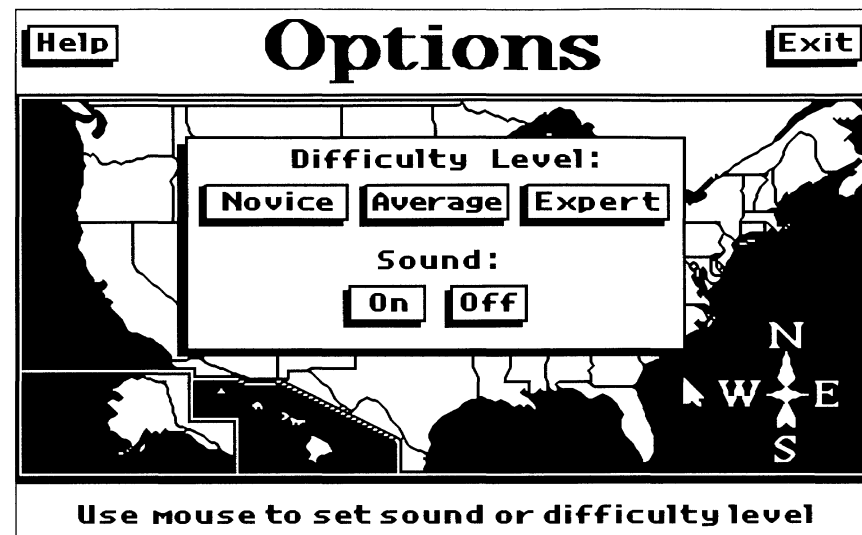
STATMAPS can display six different statistical maps for the United States:

- Population (populations for each state based on preliminary 1990 Census Data)
- Energy Usage (in trillions of BTUs for each state)
- Acquisitions (territorial acquisitions in date order)
- Population Density (per square mile for each state)
- Average Annual Pay (per state)
- Unemployment Rate (per state)

The Apple IIe/IIc version includes a map for Motor Fuel Consumption (in billion of gallons) rather than the U.S. Acquisitions Map.

Each map (except Acquisitions) is broken down into nine ranges, with appropriate values indicated at the bottom of each screen. Each range is represented by a different color. After a map is displayed on the screen, click the mouse button (or press <return>) to return to the *STATMAPS* menu.

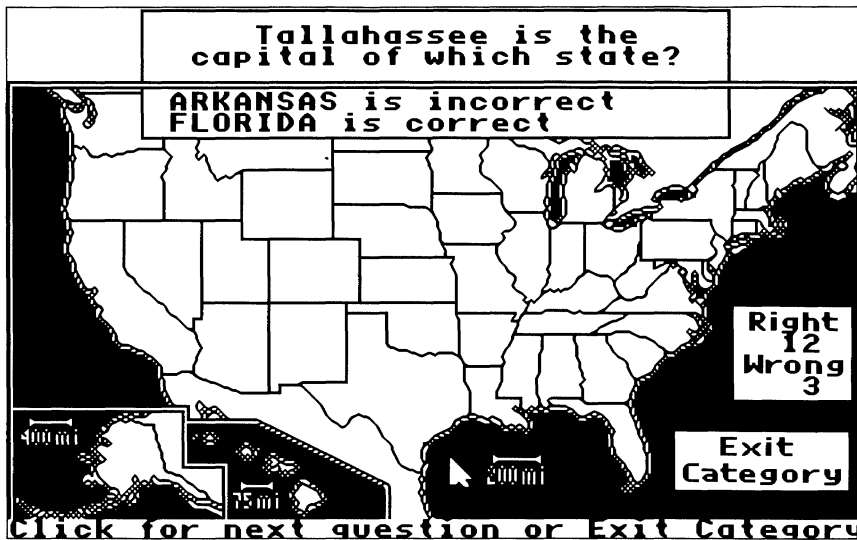
7.5 Options



OPTIONS allows you to set the difficulty level for *PUZZLE* and *MAPQUIZ* and to turn the sound on or off. The default difficulty level is *NOVICE* and the sound is turned on. To choose a difficulty level, move the pointer to the desired level (*NOVICE*, *AVERAGE* or *EXPERT*) and click the mouse (or press <return>).

To turn sound off, move the pointer to *OFF* under *SOUND* and click the mouse (or press <return>).

After you make your selections for difficulty level and sound, move the pointer to *EXIT* and click the mouse (or press <return>) to return to the Main Menu.



Novice Level

At this level, you can choose from two categories: *STATES* or *CAPITALS*. After selecting a category, a question will appear. Click (or press <return>) on the state which correctly answers the question. If correct, the state will flash and the name of the state will appear. If incorrect, the name of the state you selected will appear, followed by the name of the correct state. The correct state will flash. Click for the next question, or to change categories, move the pointer to *EXIT CATEGORY* and click the mouse (or press <return>).

Average Level

At this level, you can choose from four different question categories: *STATES*, *CAPITALS*, *CITIES* or *LANDMARKS*. *LANDMARKS* are man-made structures of either cultural or historical significance. Click for the next question, or to change categories, move the pointer to *EXIT CATEGORY* and click the mouse (or press <return>).

Expert Level

At the *EXPERT* Level, you can choose from seven different question categories: *CAPITALS*, *CITIES*, *HISTORY*, *LANDMARKS*, *FEATURES*, *NICKNAMES* or *MISCELLANEOUS*. Features are interesting geographic features (such as mountains or lakes). Click for the next question, or to change categories, move the pointer to *EXIT CATEGORY* and click the mouse (or press <return>).

GeoPuzzle USA keeps track of the number of questions you answer correctly and incorrectly. These numbers are displayed in the lower-right corner of the screen.

7.7 About

This selection lists the names of the people who designed and programmed GeoPuzzle USA, and gives information about PC Globe, Inc., the publishers of GeoPuzzle USA.

7.8 Hall of Fame

Player's Name		Level	% Puzzle Completed	Quiz Rgt/Wrng
1.	BARBARA	Expert	8%	8/
2.	SCOTTY	Novice	0%	3/1
3.	EDWARD	Novice	10%	1/1
4.	ROY	Expert	10%	5/2
5.	LARRY	Novice	18%	4/0
6.	ANA	Novice	16%	4/1
7.	CAROLYN	Novice	0%	4/2
8.	JEFF	Average	4%	2/2
9.	ANDRE	Novice	4%	2/2
10.	JACK	Novice	4%	2/4
JOHN		Novice	0%	0/0

HALL OF FAME lists the top 10 players of past games according to their scores, followed by the difficulty level at which they played, the percent of the *PUZZLE* they completed, and the number of questions answered correctly and incorrectly in *MAPQUIZ*. Your score in the current game is also displayed after the scores of the top 10 players. The Hall of Fame is saved whenever you choose *QUIT* or *RESTART* from the Main Menu *QUIT* option.

7.9 Quit

To leave GeoPuzzle USA, select *QUIT*. GeoPuzzle USA will confirm that you want to quit by displaying the prompt:

Are you sure? Yes, No, Restart

To leave GeoPuzzle USA, select *YES*. To return to the current game, select *NO*.

To restart the program, select *RESTART*.

On all other menus, the *QUIT* selection is replaced by *EXIT*, which allows you to exit from the current section and return to the Main Menu.