

[54] METHOD AND APPARATUS FOR CONTROL OF AN ELECTRONIC DISPLAY

[75] Inventors: **Jef Raskin**, Cupertino; **James Winter**, Los Angeles, both of Calif.

[73] Assignee: **Information Appliance, Inc.**, Palo Alto, Calif.

[21] Appl. No.: 338,413

[22] Filed: Apr. 11, 1989

**Related U.S. Application Data**

[63] Continuation of Ser. No. 30,277, Mar. 23, 1987, abandoned, which is a continuation of Ser. No. 605,448, Apr. 30, 1984, abandoned.

[51] Int. Cl.<sup>5</sup> ..... G09G 5/00

[52] U.S. Cl. .... 340/706; 340/709; 340/711; 341/22

[58] Field of Search ..... 340/706, 709, 710, 711, 340/721, 723, 734; 382/34, 40; 364/523, 900; 400/61, 63; 341/22

[56] **References Cited**

**U.S. PATENT DOCUMENTS**

3,755,784	8/1973	Greck, Jr. et al. ....	364/900
4,094,001	6/1978	Miller .....	364/900
4,190,835	2/1980	Buynak .....	340/709 X
4,228,430	10/1980	Iwamura et al. ....	340/709
4,330,845	5/1982	Damerau .....	382/34
4,354,185	10/1982	Worborschil .....	340/709
4,370,645	1/1983	Cason et al. ....	340/709
4,433,392	2/1984	Beaven .....	382/40
4,454,507	6/1984	Srinivasan et al. ....	340/709 X
4,481,603	11/1984	McCaskill et al. ....	340/721 X
4,500,876	2/1985	English et al. ....	340/709
4,503,427	3/1985	Iida .....	340/709 X
4,507,753	3/1985	McCaskill et al. ....	340/709 X
4,539,563	9/1985	Sako et al. ....	340/709 X
4,542,376	9/1985	Bass et al. ....	340/721 X
4,556,951	12/1985	Dickman et al. ....	382/40

**OTHER PUBLICATIONS**

Larry Tesler, "The Smalltalk Environment", BYTE Publications, Aug. 1981, pp. 90-147.

Stuart K. Card and Thomas P. Moran, "The Keystroke-Level Model for User Performance Time with Interactive Systems", Graphics and Image Processing, Jul. 1980, pp. 396-410.

Donald A. Norman, "Design Rules Based on Analyses of Human Error", Communications of the ACM, Apr. 1983, pp. 254-258.

*Primary Examiner*—Alvin E. Oberley

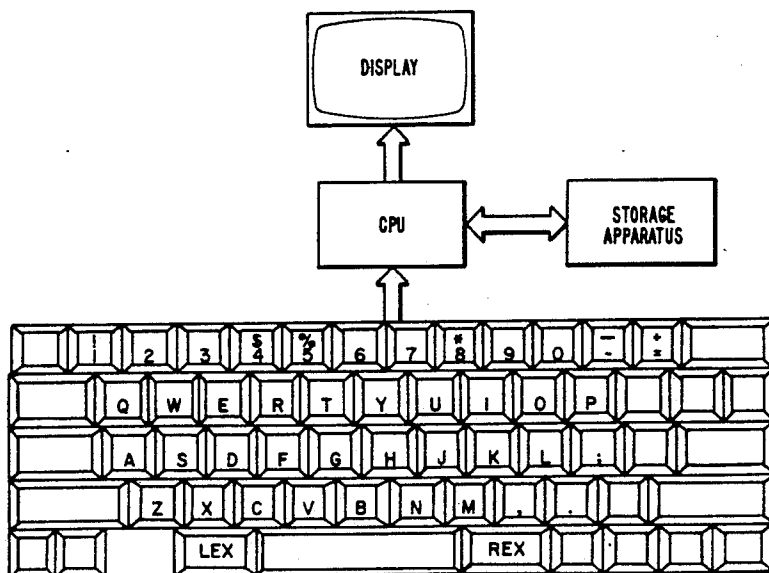
*Assistant Examiner*—Richard Hjerpe

*Attorney, Agent, or Firm*—Townsend and Townsend

[57] **ABSTRACT**

A method and apparatus are disclosed for controlling an electronic display using a keyboard to allow designation of desired regions on the display or in the memory of the system. A method of designating desired regions on the display under control of a keyboard which has at least one designation key includes the steps of positioning a cursor at a first location in fixed relationship to the desired region, activating a first designation key, and supplying through the keyboard signals to indicate a second location in fixed relationship to the selected region to cause a portion of the selected region between the first location and the desired location to be designated. The apparatus for designating a region on a display includes a processing unit coupled to the display, a keyboard connected to the processing unit to control the display, and first and second designation keys coupled to the processing unit for causing the processing unit to search the display for a pattern entered into the keyboard while at least one of the first or second keys is activated.

11 Claims, 3 Drawing Sheets



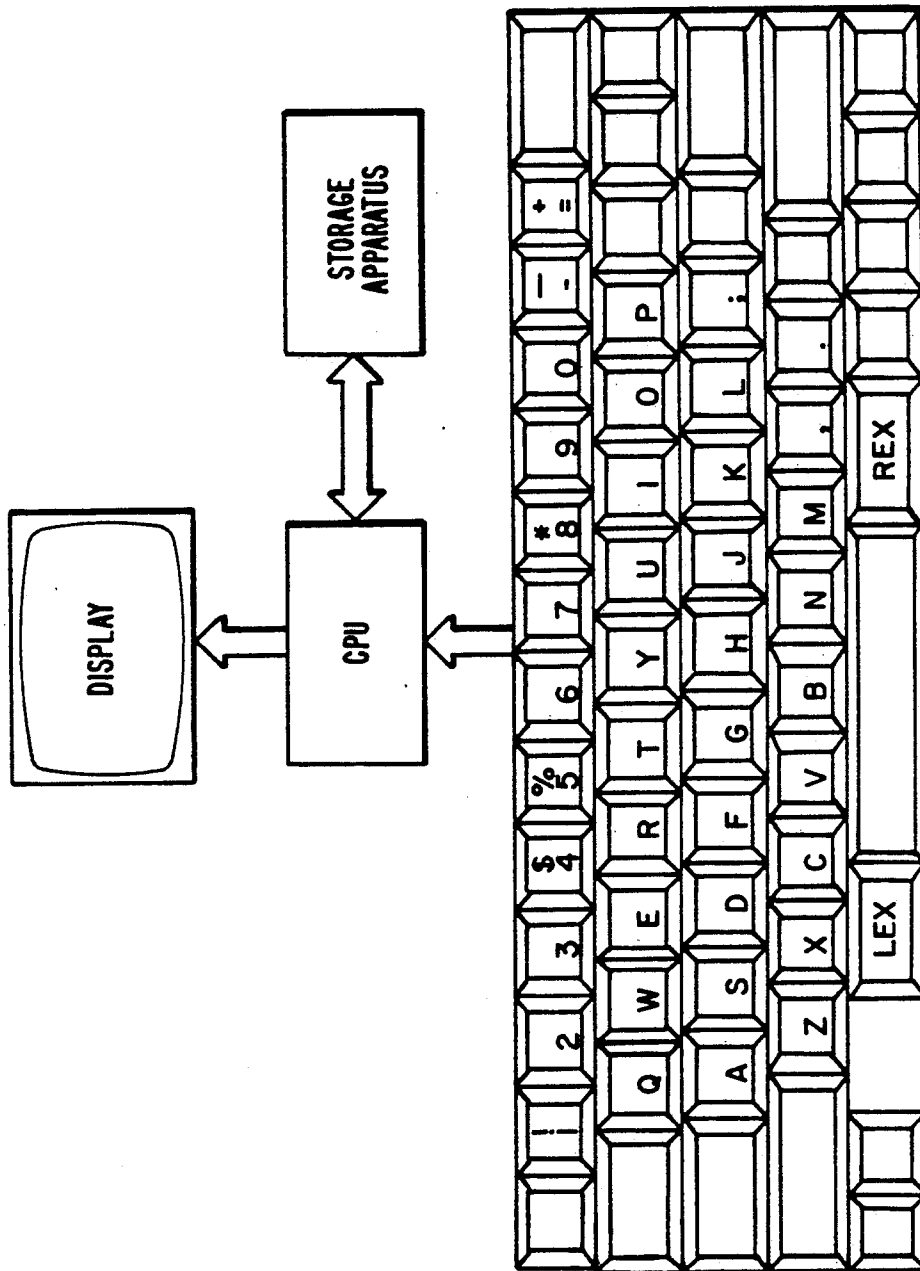


FIG.—1.

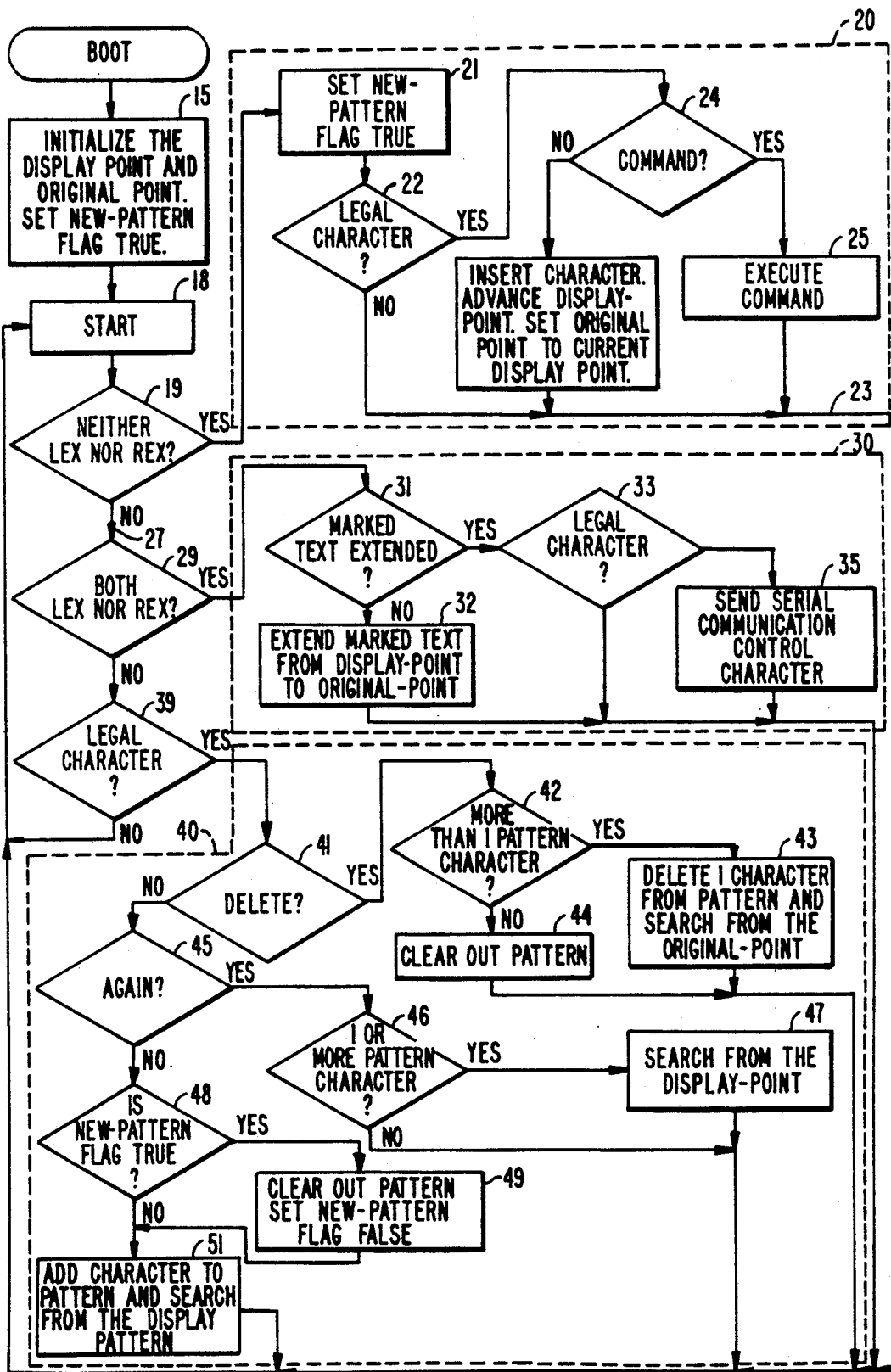


FIG. 2.

SEARCH

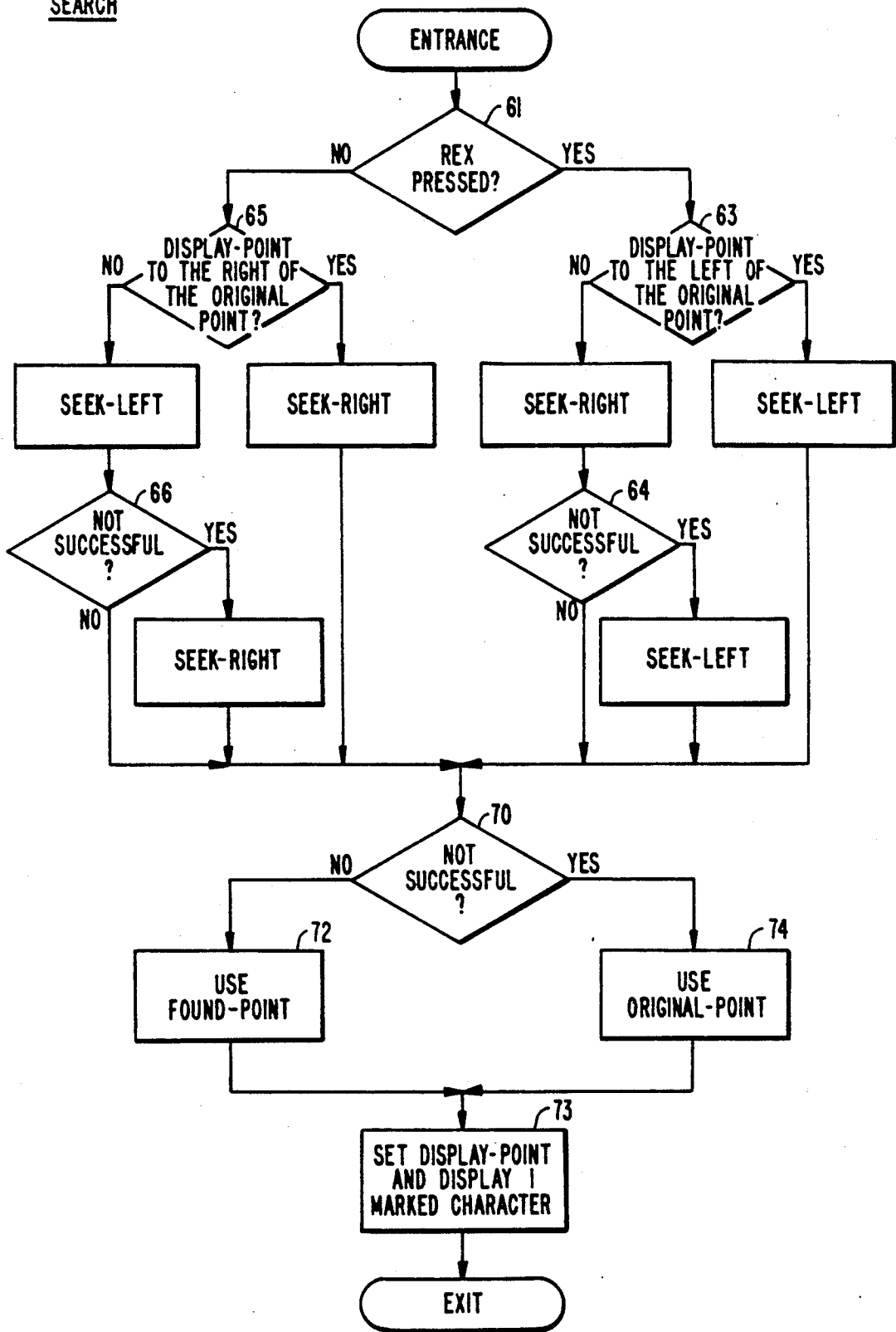


FIG. 3.

## METHOD AND APPARATUS FOR CONTROL OF AN ELECTRONIC DISPLAY

This is a continuation of Ser. No. 07/030,277, filed Mar. 23, 1987, now abandoned, which is a continuation of Ser. No. 06/605,488, filed Apr. 30, 1984 now abandoned.

### BACKGROUND OF THE INVENTION

#### 1. Field of the Invention

This invention relates generally to computer controlled displays, and in particular to a method and apparatus for designating a region on a display or stored in a memory which is under control of a keyboard, for example, during manipulation of information being displayed on such a display.

#### 2. Description of the Prior Art

As the price for computer hardware continues to decline, the number and extent of applications for computers both in the home and in the workplace have increased enormously. In many such applications, notably the processing of textual material using so-called "word processing" techniques, the user of a computer system is called upon to designate locations or regions of the material displayed on a screen or stored in the memory of the system. For example, the user may wish to locate and display a particular sentence in a document stored in the computer system, when only a small portion of the document can be displayed on a CRT monitor coupled to the system at any one time. After locating or designating such locations or regions, the user of the system may enter additional information into the computer using a keyboard or other well known input device to modify the material displayed. For example, the user of the system may designate a location in text displayed on or off the screen, at which location additional text is to be inserted. Alternatively, a user may designate a portion of the text to be deleted or moved to another location.

Many mechanisms have been developed to allow a user of a computer system to designate such locations or regions. Conventionally available systems include joy sticks, cursor control keys, special function keys, and pointing devices such as "mice."

Cursor control keys, also known as "step" keys, are conventionally divided in sets of four or more on a keyboard, with the up/down keys used to move the cursor from one line to the next, and the right/left keys used to move the cursor along a given line. Cursor control keys, however, are among the slowest of all pointing mechanisms, primarily due to the large number of keystrokes required to move the cursor across large regions of the screen. For example, to position the cursor at a location 40 characters to the right on a given line requires either 40 keystrokes, or holding the key down for 40 cycles. Because this process is tedious, computer system hardware and software designers have provided alternative cursor control keys which move the cursor a word, a sentence, or a paragraph at a time. Unfortunately, each such alternative requires a separate key, or a separate set of keystrokes, resulting in a difficult to remember set of commands. Furthermore, for many operations the user must first mentally plan a path from the present to the desired cursor position. Such planning requires time and effort, frequently resulting in the user of such a system relying only upon the repeated actuation of the principle cursor control keys.

Another commonly used technique for designating locations or regions of text on a screen is by the use of graphic pointing devices, such as mice, graphics tablets, joy sticks, trackballs, touch pannels, touchsensitive screens, light pens, and the like. Graphic pointing devices, however, cannot point to regions not shown on the display. In addition to the added desk space required, the expense of these devices adds to the cost of the product with which they are used. Such devices are generally slow because of the time required for the operator to remove his or her hands from the keyboard, grasp or pick up the device, use the device, release it and then return to the keyboard in the correct position. Graphic pointing devices also require the user to maintain both the present and desired cursor positions in view and shift attention from one to the other.

Yet another technique for enabling a user to position a cursor to a desired location on a screen is the use of "find" commands. In conventional text processing equipment, a find command requires the user to enter a mode where keystrokes are interpreted as a pattern to be found, rather than as additional text or system commands. To use a find command the operator activates a switch where subsequent keystrokes are interpreted as the pattern to be found, enters the desired keystrokes, and then terminates the pattern using a delimiter which signals the end of the pattern and starts the search. Other systems require the user to end the pattern with a first signal, and then start the search with a second signal.

Find commands, however, have two major disadvantages. First, because the find command creates a separate mode of operation of the same keys, human errors and user irritation are prone to occur because the same keystrokes do not always represent the same activity. The user of such a system must always be aware of which mode it is in. The second major problem with find commands is the necessity of delimiting the pattern. The delimiter, of course, cannot be used in the pattern, meaning that any character chosen as the delimiter either must be excluded from the text or cannot be found by the find mechanism. Additionally, most implementations of the find command require that a portion of the display screen be reserved for displaying the pattern as it is entered. This reserved space consumes valuable display area, particularly on portable computers using smaller display areas. Additionally, with most implementations of find commands, the user cannot find a pattern prior to the current cursor position without either reversing the direction of the find command, using a separate command or yet another mode, or first moving the cursor to the beginning of the text or some other point ahead of the material to be searched.

### SUMMARY OF THE INVENTION

The method and apparatus of this invention provide a technique for rapidly and accurately initiating a search of text or other information stored in computer storage apparatus or displayed on a screen without using cursor control keys, graphic pointing devices, or modal systems such as the find command. As a result the system of this invention is simpler and faster to use, and may be used with substantially fewer errors than prior art systems. At its simplest level the system allows the designation of a particular character on a display or in a real or virtual memory, even in the presence of other instances of that same character without removing the operator's

hands from the keyboard or switching to a different mode.

In one embodiment a method of designating a desired region in a computer storage apparatus under control of a keyboard or other input means, having at least one designation means, includes the steps of positioning a cursor at a first location in fixed relationship to the desired region, activating a first designation key, and supplying through the keyboard signals to indicate a second location in fixed relationship to the desired region to thereby cause that portion of the desired region between the first location and the second location to be designated. In the preferred embodiment after the region is designated the first designation key is released or deactivated to return the keyboard to normal operation. In the preferred embodiment, the step of positioning the cursor at a first location consists of the steps of activating a second designation key and supplying through the keyboard signals to indicate the first location. Usually the steps of supplying through the keyboard signals to indicate a location consists of striking keys corresponding to the display or the contents of the memory at the desired location.

In one embodiment a method of designating a particular character on a display under control of a keyboard and a designation key not necessarily on the keyboard comprises activating the designation key and while the designation key is activated supplying through the keyboard signals consisting of the particular character, and if necessary other characters to provide a context to distinguish the particular character from other instances of the same character, whereupon an indication is given that the particular character has been designated.

In a preferred embodiment apparatus for designating a region on a display comprises a processing unit coupled to the display; a keyboard connected to the processing unit; and first and second switchable designation means coupled to the processing unit for causing the processing unit to search the display for a pattern entered into the keyboard while at least one of the first and second switchable designation means is activated, wherein the first designation means causes the processing unit to search for the pattern in a first direction from a selected location on the screen, and the second designation means causes the processing unit to search in an opposite direction. The first and second designation means usually are keys on the keyboard.

### BRIEF DESCRIPTION OF THE DRAWINGS

FIG. 1 is a block diagram illustrating the apparatus of the preferred embodiment.

FIG. 2 is a flow-chart illustrating the method of the preferred embodiment.

FIG. 3 is a flow-chart illustrating in detail a step in the flow-chart of FIG. 2.

### DETAILED DESCRIPTION OF THE PREFERRED EMBODIMENT

FIG. 1 is a block diagram of a system, including a keyboard illustrating one embodiment for the apparatus of this invention. The keyboard depicted is a standard keyboard with the exception of a "rex" and "lex" keys provided at opposite ends of the shortened space bar key. The "lex" and "rex" keys are electrically connected to the computer in such a way that the two states in which either may be at any instant of time—up or down—may be detected independently of the state or states of any other key or keys on the keyboard. The lex

and rex keys are additional keyboard keys constructed in the same manner as the keys in a conventional keyboard, that is, as momentary contact push buttons labeled to reflect their function.

In the preferred embodiment activation (depression) of the lex key causes the computer system to search to the left of the present cursor location for whatever pattern is entered into the keyboard while the lex key is held depressed. Thus, to search for the first occurrence of the pattern "Je" to the left of the present cursor position, the user will depress the lex key, and enter a capital J. In the manner explained in detail below, the computer system will search its memory, including the portion of the text displayed, for the first occurrence of "J" to the left of the present cursor position. When found, that portion of text will be displayed with the cursor positioned at the newly found "J". As soon as the user enters "e" the system will search for the first occurrence of the pattern "Je" to the left of or at the present cursor position (now "J"). If the operator of the system desires to search for "Jef", the lex key will be held in an activated position and an "f" typed to continue the search. At the conclusion of the search the cursor will be positioned in a fixed relation to the first occurrence to the left of the previous cursor position at which the pattern "Jef" occurs. The user of the system may now proceed to edit the text at this location, for example, by inserting, deleting, or changing the display using other keys.

Next, assume that rather than designate only the first occurrence of the above pattern, the user of the system desires to designate the remainder of the sentence in which "Jef" occurs. This may be accomplished by depression of the rex key and entry through the keyboard of a ".". In the preferred embodiment this will cause the system to designate the entire segment of text beginning with "Jef" and ending with ".". In this manner desired segments or regions of textual or other material may be rapidly and accurately designated and displayed on the screen, without the disadvantages of the prior art systems described above. Once designated, well known additional manipulation may be performed on the specified regions, for example, deleting the designated material, movement of the designated material to other locations in the text, etc.

Although the rex and lex functions are depicted in FIG. 1 as being accomplished by extra keys on a keyboard, other well-known implementations may be readily employed to accomplish the same functions. For example, foot pedals or other switches may be used. All such alternative input devices are termed designation means herein.

In operation when either the lex or rex key is depressed, no immediate change occurs on the screen. When the first character of the pattern is typed, however, an internal pointer, which may be represented by a cursor, or other indicator on the screen, begins moving to the left or right, depending on whether the lex or rex key was depressed. Under control of the computing system, each character encountered as the cursor travels is inspected to determine whether it corresponds to the character entered into the keyboard. Because (in a conventional computing system) of the rapidity with which each character may be compared to the desired one, the inspection takes place too quickly to be observed. To the operator of the system the effect is as if the cursor suddenly moved to the position where the pattern was found. If the user continues to hold the lex

or rex key depressed and types further characters, each character is added to the pattern, and as each is added the search proceeds for the entire pattern entered to that moment.

Although throughout this application reference is made to material being displayed on a screen, it should be understood that the extent to which the material is displayed on the screen is arbitrary, and not related to the invention. For example, in a typical word processing environment, the amount of text displayed on the screen at any given instant primarily will be determined by the size and type of display, and the software operating on the host computer. In application of this invention to such a system, the search performed by the processing unit will proceed through all (or a desired portion) of the text in the desired document, whether or not all such text is actually "displayed" on the screen at the instant the search begins.

In some embodiments of the invention to avoid having to know in advance where in the text the desired pattern occurs with respect to the present position of the cursor on the screen, the entire text may be treated as though the first character were concatenated to the last character. Thus, when the lex key is depressed the search will proceed to the left (or forward of the cursor position) and continue to the beginning of the text, and then pick up at the end of the text and continue back to the former cursor location until the desired pattern is found or not found.

In other embodiments of the invention to avoid having to know in advance where in the text the desired pattern occurs with respect to the present position of the cursor on the screen, the search may proceed in the direction indicated by the choice of either the lex key or the rex key, however if the search fails in the indicated direction, the search then automatically proceeds from the cursor location in the other direction. Thus, when the rex key is used to initiate a search to the right from the present cursor location and the pattern is not discovered between the present cursor location and the last character of the text, the search then automatically resumes from the left of the present cursor position up to and including the first character of the text if necessary.

FIG. 2 is a flow-chart illustrating a preferred embodiment of the method of this invention. As shown in FIG. 2 the method begins with "booting" the system and initializing it. If no textual matter is loaded into the system at this time, the display point, (the point displayed on the screen), and the original point (the last stored point to which the lex or rex keys caused the system to locate) are the same point and at the upper left hand corner of the display screen. During the initialization a flag referred to as the "newpattern" flag is set as true. See block 15 in FIG. 2. The new pattern flag is an indicator used to determine whether or not to erase a pattern to be searched for. Setting the new pattern flag causes the system to ignore any existing pattern, in effect indicating that any characters subsequently entered are the beginning of a new pattern.

If a program has been entered at the time the system is booted, then the original point, display point, and new pattern flag are set in accord with the instructions from the stored program. (The reference numerals associated with the locations in the flow-chart are not indicative of the order in which the steps on the flowchart are performed, but simply used for the convenience of explanation.)

The system is then placed at block 18 designated Begin. Under control of the host program, and using well-known apparatus, the condition of the keyboard is monitored with a desired frequency. Assuming that neither the lex nor rex keys are depressed, operation of the system proceeds as shown generally within block 20. Operation of the system in this manner is essentially the same as a conventional keyboard and display. The new pattern flag is set true at block 21 and then a test is made at block 22 to determine whether a legal character, that is, an ASCII character meaningful to the logic, has been entered through the keyboard. If not, as shown by path 23, the system returns to block 18. If a legal character has been entered through the keyboard, a test is made at block 24 to determine whether the character was a command. If the character is not a command it is inserted into the display, the display point is advanced, and the original point is set to the current display point. Operation of the system then proceeds along path 23 to return to block 18, and the cycle repeated. If a command has been entered at block 24 the system then executes the command (block 25), and returns via path 23 to block 18.

If at block 19 either the lex or rex keys have been depressed, operation of the system proceeds along path 27 to decision block 29. As shown, at block 29 a test is performed to determine whether both the lex and rex keys have been depressed. If so, operation of the system proceeds into block 30. In this portion of system operation a test 31 is performed to determine whether "marked" text has been extended between the characters designated by both the lex and rex keys. Marked text is text made obvious by reverse video, blinking, brightness, color, or other well-known techniques. Of course, on the first pass through this loop there will not be any "marked" text unless the system has been operating in block 40, so the test will fail transferring the system to block 32. As shown by block 32 all text between the display point and the original point is then marked and system operation returns to block 18. If at block 31 text has already been marked, system operation passes to a determination of whether a legal character 33 has been entered. If so, the character is interpreted as a serial communication control character according to block 35. If not, system operation returns to block 18.

If the decision at block 29 is false, that is, not both the lex and rex keys have been activated, then system operation proceeds to block 39 to determine whether or not a legal character has been entered. If a legal character has not been entered from the keyboard, for example, by keys on the keyboard simply not having been depressed during that cycle of operation, then system operation returns to block 18.

If a legal character has been entered a test is first made at block 41 to determine whether the character entered was the delete key. If the delete key is activated, a test is made at block 42 to determine whether the pattern typed while the lex or rex key was held includes more than one character. If it does, then as shown by block 43, one character is deleted from the pattern and a search is performed from the original point to locate other instances of the same pattern. The manner in which the search is performed at block 43 is discussed in further detail in conjunction with FIG. 3. System operation then returns to block 18. If at block 42 only a single character is found in the pattern, then as indicated by block 44 the entire pattern is deleted, and system operation returns to block 18.

If the delete key was not depressed at block 41, then system operation proceeds to block 45 to determine whether a key has been activated to indicate that the search should be repeated. (As explained below if a search has not been performed then the again key is effectively ignored.) If the again key is activated then a test is made at block 46 to determine whether one or more characters are in the pattern. If one or more characters are not in the pattern, then system operation returns to block 18. If one or more characters are found to be in the pattern, then a search is made as shown by block 47 from the display point for the pattern, and system operation returns to block 18. If the again key is not active, then at block 48 the system determines whether the new pattern flag has been set. If it has been set, the pattern is cleared and the flag reset as shown by block 49. If the new pattern flag is not set, the legal character entered at block 39 is added to the pattern and a search is made from the display point for the entire pattern.

The method by which the search referred to in blocks 43, 47, and 51 is conducted is shown in further detail in FIG. 3. As shown there, once the search is initiated a decision is made at block 61 as to whether the rex key is active. If so, the system passes to block 63 and a test is made to determine whether the display point is to the left of the original point. If that condition is true, then a search is conducted to the left. If that condition is found false, the search is conducted to the right. If the search to the right is unsuccessful, then as shown by block 64 a search is made to the left. At the end of searching in one or both directions, system operation passes to block 70.

If at block 61 the rex key is not depressed, and the display point is to the right of the original point after the test in block 65, a search is made to the right. If the display point is not to the right of the original point then a search is made to the left as shown by block 66. If this search is not successful, the search is made to the right as shown at blocks 66 and 67.

Whatever the outcome of the searches performed in the upper portion of FIG. 3, a new test is made at block 70 to determine whether the search is successful. If the search was successful then the found point 72 is used as the present display point (cursor location) 73. If the search was not successful, then the original point 74 is used as the display point 73.

In some embodiments of the invention the effect of activating the rex and lex keys will not be symmetrical. In one such embodiment the lex key will be used to skip to the designated pattern from the present cursor position in the manner explained above. Thus, entry of a pattern will not cause the entire region of text between

the present cursor position and the entered pattern to be selected, but will rather cause selection of only the pattern or a portion of the pattern such as the first character. That is, no text will be selected but the cursor will be relocated in fixed relationship to the text matching the pattern, for example, immediately to the left or right of the text matching the pattern. In contrast, use of the rex key in such embodiments will cause the entire portion of the text between the present location of the cursor and the designated pattern to be selected. Using the lex and rex keys in this manner, if an entire sentence is to be selected, the lex key will be depressed and a pattern corresponding to the pattern at the beginning of the desired sentence entered. The lex key is then released and the rex key depressed. A pattern corresponding to the end of the sentence, for example, a "." is entered. This will cause the text selected to be the entire text material between the pattern entered with the lex key and the pattern entered with the rex key to be chosen. In such embodiments, the selected text usually will be presented in highlighted fashion, for example by underlining, reverse video, blinking, or other well known display techniques.

The method and apparatus of this invention have numerous applications beyond the editing of text in the manner described above. For example, the search techniques of the invention may be utilized with read only text such as published material, telephone directories, optical discs, etc. to quickly locate and view desired portions of such text. In such applications, as well as in the editing text, the particular direction which the search takes may be varied to suit the particular application. For example, if all searches are to proceed in a single direction, the provision of only a single rex or lex key will be necessary. In other applications it may be desirable to have the search proceed in alternating directions beginning with the direction in which the desired pattern is closest to the present cursor location.

In some embodiments of the invention both the lex key and the rex key may be simultaneously activated to cause the search to proceed in both directions simultaneously. Such embodiments are particularly useful for enabling selection of a single word by entering a blank while both keys are depressed, or selection of a sentence, by entry of a "." while both keys are depressed.

In the preferred embodiment the method of this invention is carried out by an Apple IIe computer operating under control of the program attached as an Appendix to this application.

The foregoing explanation of the preferred embodiments of the invention are intended to illustrate the invention, rather than limit it. The scope of the invention may be ascertained from the appended claims.

55

60

65



APPENDIX

Address	Hexadecimal	ASCII
0800	EA 4C 41 1A EA 4C 55 1A 00 00 01 00 C9 61 08 00	.LA..LU.....a..
0810	50 02 FF 00 FF 01 00 01 1F 00 01 00 DC 61 DC 61	P.....a.a
0820	0A 31 00 B8 08 00 83 4C 49 D4 00 00 2E 08 B1 18	.1.....LI.....
0830	48 E6 18 D0 02 E6 19 B1 18 E6 18 D0 02 E6 19 CA	H.....
0840	CA 95 01 68 95 00 A0 01 B1 18 85 0B 88 B1 18 85	...h.....
0850	0A 18 A5 18 69 02 85 18 90 02 E6 19 4C 09 00 84	...i.....L...
0860	43 4C 49 D4 26 08 68 08 B1 18 48 98 4C 39 08 0A	CLI.&h...H.L9..
0870	85 0F B5 00 99 10 00 E8 C8 C4 0F D0 F5 A0 00 60	.....
0880	87 45 58 45 43 55 54 C5 5F 08 8C 08 B5 00 85 0A	.EXECUT.....
0890	B5 01 85 0B E8 E8 4C 09 00 85 52 44 52 4F D0 80	.....L...RDRO..
08A0	08 A3 08 68 68 4C 46 08 86 42 52 41 4E 43 C8 99	...hhLF..BRANC..
08B0	08 B3 08 18 B1 18 65 18 48 C8 B1 18 65 19 85 19	.....e.H...e...
08C0	68 85 18 4C 48 08 87 30 42 52 41 4E 43 C8 A8 08	h..LH..OBRANC...
08D0	D2 08 E8 E8 B5 FE 15 FF F0 D9 18 A5 18 69 02 85	.....i...
08E0	18 90 02 E6 19 4C 46 08 86 28 4C 4F 4F 50 A9 C6	.....LF..(LOOP..
08F0	08 F3 08 86 0E BA FE 01 01 D0 03 FE 02 01 18 BD	.....
0900	03 01 FD 01 01 BD 04 01 FD 02 01 A6 0E 0A 90 A3	.....
0910	68 68 68 68 4C DA 08 87 28 2B 4C 4F 4F 50 A9 E8	hhhhL...(+LOOP..
0920	08 23 09 E8 E8 86 0E B5 FF 48 48 B5 FE BA E8 E8	.#.....HH.....
0930	18 7D 01 01 9D 01 01 68 7D 02 01 9D 02 01 68 10	.).....h}.....h.
0940	BD 18 BD 01 01 FD 03 01 BD 02 01 FD 04 01 4C 0B	.....L.
0950	09 84 28 44 4F A9 17 09 5A 09 B5 03 48 B5 02 48	...(DO...Z...H..H
0960	B5 01 48 B5 00 48 E8 E8 E8 E8 4C 46 08 85 32 44	...H..H...LF..2D
0970	52 4F D0 51 09 66 09 81 D2 6D 09 7D 09 86 0E BA	RO.Q.f...m.)....
0980	BD 01 01 48 BD 02 01 A6 0E 4C 3F 08 81 C9 77 09	...H.....L?...w.
0990	7D 09 85 52 50 49 43 CB 8C 09 9C 09 B5 00 0A E8	)...RPIC.....
09A0	E8 85 10 86 0E BA 8A 18 65 10 AA 4C 80 09 81 CA	.....e..L....
09B0	92 09 B4 09 A9 04 D0 E9 81 CB AE 09 BE 09 A9 08	.....
09C0	D0 DF 85 44 49 47 49 D4 B8 09 CG 09 38 B5 02 E9	...DIGI.....8...
09D0	30 30 18 C9 0A 30 07 38 E9 07 C9 0A 30 0D D5 00	00...0.8...0...
09E0	10 09 95 02 A9 01 48 98 4C 41 08 98 48 E8 E8 4C	.....H.LA..H..L
09F0	41 08 86 28 46 49 4E 44 A9 C2 09 FD 09 A9 02 20	A..(FIND.....
0A00	6F 08 86 0E A0 00 B1 10 51 12 29 3F D0 2D C8 B1	o.....Q.)?..-
0A10	10 51 12 0A D0 23 90 F6 A6 0E CA CA CA CA 18 98	.Q...#.....
0A20	69 05 65 10 95 02 A0 00 98 65 11 95 03 94 01 B1	i.e.....e.....
0A30	10 95 00 A9 01 48 4C 3F 08 B0 05 C8 B1 10 10 FB	...HL?.....
0A40	C8 B1 10 AA C8 B1 10 85 11 86 10 05 10 D0 B5 A6	.....
0A50	0E A9 00 48 4C 3F 08 87 45 4E 43 4C 4F 53 C5 F2	...HL?...ENCLOS..
0A60	09 63 0A A9 02 20 6F 08 8A 38 E9 08 AA 94 03 94	.c...o..8.....
0A70	01 B1 12 C5 10 D0 0E C8 D0 F7 E6 13 F6 05 F6 03	.....
0A80	F6 01 4C 71 0A 94 04 B1 12 D0 12 94 02 94 00 98	...Lq.....
0A90	D5 04 D0 06 F6 02 D0 02 F6 03 4C 46 08 94 02 C8	.....LF.....
0AA0	D0 06 E6 13 F6 03 F6 01 C5 10 D0 DB 94 00 4C 46	.....LF
0AB0	08 86 2D 43 4D 4F 56 C5 57 0A BC 0A A9 03 20 6F	...-CMOV.W.....o
0AC0	08 98 18 E5 10 85 10 C6 13 C6 15 88 C4 10 D0 07	.....
0AD0	C6 11 10 03 4C 46 08 B1 14 91 12 C0 00 D0 EC F0	...LF.....
0AE0	E6 85 43 4D 4F 56 C5 B1 0A EB 0A A9 03 20 6F 08	...CMOV.....o.
0AF0	B1 14 C4 10 D0 07 C6 11 10 03 4C 46 08 91 12 C8	.....LF....

Address	Hexadecimal																ASCII
0B00	D0	EE	E6	15	E6	13	4C	F0	0A	84	46	49	4C	CC	E1	0A	.....L...FIL...
0B10	12	0B	B5	00	48	E8	E8	A9	02	20	6F	08	38	A5	12	E9	...H....o.8...
0B20	01	85	14	A5	13	E9	00	85	15	68	4C	F2	0A	90	0B	18	.....hL.....
0B30	65	10	A8	A5	11	65	15	85	15	98	66	15	6A	66	13	66	e....e....f.jf.f
0B40	12	CA	D0	E9	A6	0E	60	86	0E	84	15	B5	01	D0	1D	B5	.....
0B50	03	85	11	B5	02	85	10	B5	00	85	12	98	A2	09	20	3D	..... =
0B60	0B	95	03	A5	15	95	00	A5	13	95	02	60	94	01	85	11	.....
0B70	B5	00	85	10	B5	02	85	12	B5	03	F0	E0	85	13	98	A2	.....
0B80	17	20	3D	0B	95	00	A5	15	95	01	A5	12	95	02	A5	13	. =.....
0B90	95	03	60	82	55	AA	09	0B	9A	0B	20	47	0B	4C	46	08	...U.....G.LF.
0BA0	81	AA	93	0B	A6	0B	20	47	0B	E8	E8	4C	46	08	82	55	.....G...LF..U
0BB0	AF	A0	0B	B5	0B	B5	04	B4	02	94	04	0A	95	02	B5	05	.....
0BC0	B4	03	94	05	2A	95	03	A9	10	85	10	36	04	36	05	08	....*.....6.6..
0BD0	38	B5	04	F5	00	A8	B5	05	F5	01	90	09	94	04	95	05	8.....
0BE0	28	38	4C	EC	0B	28	90	04	94	04	95	05	36	02	36	03	(8L..(.....6.6.
0BF0	C6	10	D0	D7	4C	68	09	83	41	4E	C4	AE	0B	FF	0B	B5	....Lh..AN.....
0C00	00	35	02	48	B5	01	35	03	E8	E8	4C	41	08	82	4F	D2	.5.H..5...LA..O.
0C10	F7	0B	14	0C	B5	00	15	02	48	B5	01	15	03	E8	E8	4C	.....H.....L
0C20	41	08	83	58	4F	D2	0D	0C	2A	0C	B5	00	55	02	48	B5	A..XO...*...U.H.
0C30	01	55	03	E8	E8	4C	41	08	83	53	50	C0	22	0C	40	0C	.U...LA..SP."@.
0C40	8A	48	A9	00	4C	3F	08	81	B0	38	0C	4D	0C	A9	00	F0	.H..L?...8.M....
0C50	F0	81	B1	47	0C	57	0C	A9	01	D0	E6	83	53	50	A1	51	...G.W.....SP.Q
0C60	0C	63	0C	A0	06	B1	0C	AA	4C	46	08	83	52	50	A1	5B	.c.....LF..RP.[
0C70	0C	73	0C	86	0E	A0	08	B1	0C	AA	9A	A6	0E	4C	46	08	.s.....LF.
0C80	82	3B	D3	6B	0C	87	0C	68	85	18	68	85	19	4C	46	08	.;k...h..h..LF.
0C90	82	2F	C3	80	0C	97	0C	B5	01	94	01	4C	41	0C	85	4C	./.....LA..L
0CA0	45	41	56	C5	90	0C	A8	0C	86	0E	BA	ED	01	01	9D	03	EAV.....
0CB0	01	BD	02	01	9D	04	01	A6	0E	4C	46	08	82	3E	D2	9E	.....LF..>..
0CC0	0C	C3	0C	B5	01	48	B5	00	48	E8	E8	4C	46	08	82	52	.....H..H..LF..R
0CD0	BE	BC	0C	D5	0C	CA	CA	68	95	00	68	95	01	4C	46	08	.....h..h..LF.
0CE0	82	30	BD	CE	0C	E7	0C	B5	00	15	01	94	01	D0	01	C8	.0.....
0CF0	94	00	4C	46	08	83	4E	4F	D4	E0	0C	E7	0C	82	30	BC	..LF..NO.....0.
0D00	F5	0C	04	0D	16	01	98	2A	94	01	95	00	4C	46	08	82	.....*....LF..
0D10	31	AB	FD	0C	16	0D	F6	00	D0	02	F6	01	4C	46	08	82	1.....LF..
0D20	32	AB	0F	0D	26	0D	18	B5	00	69	02	95	00	B0	EB	4C	2...&....i....L
0D30	46	08	82	31	AD	1F	0D	39	0D	38	A9	FE	75	00	95	00	F..1...9.8..u...
0D40	B0	02	D6	01	4C	46	08	82	32	AD	32	0D	4E	0D	18	90	...LF..2.2.N...
0D50	E9	82	32	AA	47	0D	58	0D	16	00	36	01	4C	46	08	82	..2.G.X...6.LF..
0D60	32	AF	51	0D	66	0D	56	01	76	00	4C	46	08	81	AB	5F	2.Q.f.V.v.LF....
0D70	0D	73	0D	18	B5	00	75	02	95	02	B5	01	75	03	95	03	.s....u....u...
0D80	E8	E8	4C	46	08	81	AD	6D	0D	8B	0D	38	B5	02	F5	00	..LF...m...8....
0D90	95	02	B5	03	F5	01	95	03	E8	E8	4C	46	08	82	44	AB	.....LF..D.
0DA0	85	0D	A4	0D	18	B5	02	75	06	95	06	B5	03	75	07	95	.....u....u...
0DB0	07	B5	00	75	04	95	04	B5	01	75	05	95	05	4C	66	09	...u....u...Lf.
0DC0	85	4D	49	4E	55	D3	9D	0D	CA	0D	38	98	F5	00	95	00	.MINU.....8....
0DD0	98	F5	01	95	01	4C	46	08	86	44	4D	49	4E	55	D3	C0	....LF..DMINU..
0DE0	0D	E3	0D	38	98	F5	02	95	02	98	F5	03	95	03	4C	CB	...8.....L.
0DF0	0D	84	4F	56	45	D2	D8	0D	FA	0D	B5	02	48	B5	03	4C	..OVE.....H..L

Address

Hexadecimal

ASCII

Address	Hexadecimal	ASCII
0E00	3F 08 83 52 4F D4 F1 0D 0A 0E B5 04 48 B4 05 B5	?..RO.....H...
0E10	02 95 04 B5 03 95 05 B5 00 95 02 B5 01 95 03 98	.....
0E20	4C 41 08 84 44 52 4F D0 02 0E 68 09 84 53 57 41	LA..DRO...h..SWA
0E30	D0 23 0E 35 0E B5 00 B4 02 95 02 94 00 B5 01 B4	..#..5.....
0E40	03 95 03 94 01 4C 46 08 83 44 55 D0 2C 0E 50 0E	.....LF..DU...P.
0E50	B5 00 48 B5 01 4C 3F 08 84 2D 44 55 D0 48 0E 61	..H..L?..-DU.H.a
0E60	0E B5 00 15 01 D0 E9 4C 46 08 82 2B A1 58 0E 71	.....LF...+..X.q
0E70	0E 18 A1 00 75 02 81 00 F6 00 D0 02 F6 01 A1 00	.....u.....
0E80	75 03 81 00 4C 66 09 86 54 4F 47 47 4C C5 6A 0E	u...Lf..TOGGL.j.
0E90	92 0E A1 02 55 00 81 02 4C 66 09 81 C0 87 0E A1	....U...Lf.....
0EA0	0E A1 00 48 F6 00 D0 02 F6 01 A1 00 4C 41 08 82	...H.....LA..
0EB0	43 C0 9B 0E B6 0E A1 00 95 00 94 01 4C 46 08 81	C.....LF..
0EC0	A1 AF 0E C5 0E B5 02 81 00 F6 00 D0 02 F6 01 B5	.....
0ED0	03 81 00 4C 66 09 82 43 A1 BF 0E DD 0E B5 02 81	...Lf..C.....
0EE0	00 4C 66 09 C1 EA D6 0E FC 0E EF 12 AB 12 D0 10	.Lf.....
0EF0	9F 0E C2 10 C3 0E B0 17 70 13 BF 13 A5 19 48 A5	.....P.....H.
0F00	18 48 18 A5 0A 69 02 85 18 98 65 0B 85 19 4C 46	.H...i...e...LF
0F10	08 C1 BB E4 0E FC 0E 17 13 4C 13 85 0C 84 13 62	.....L.....b
0F20	13 85 0C 88 43 4F 4E 53 54 41 4E D4 11 0F FC 0E	....CONSTAN.....
0F30	D7 13 58 11 BF 13 CA CA A0 02 B1 0A 95 00 C8 B1	..X.....
0F40	0A 95 01 4C 46 08 88 56 41 52 49 41 42 4C C5 23	...LF..VARIABL.#
0F50	0F FC 0E 2E 0F BF 13 CA CA 18 A5 0A 69 02 95 00	.....i...
0F60	A5 0B 69 00 95 01 4C 46 08 84 55 53 45 D2 46 0F	..i...LF..USE.F.
0F70	FC 0E 2E 0F BF 13 CA CA 18 A0 02 B1 0A 65 0C 95	.....e.....
0F80	00 C8 B1 0A 65 0D 95 01 4C 46 08 81 B2 69 0F 36	....e...LF...i.6
0F90	0F 02 00 81 B3 8B 0F 36 0F 03 00 81 B4 93 0F 36	.....6.....6
0FA0	0F 04 00 82 2D B1 9B 0F 36 0F FF FF 82 42 CC A3	....-...6...B..
0FB0	0F 36 0F 20 00 83 43 2F CC AC 0F 36 0F 28 00 85	.6...C/...6.(..
0FC0	46 49 52 53 D4 B5 0F 36 0F E0 97 85 4C 49 4D 49	FIRS...6...LIMI
0FD0	D4 BF 0F 36 0F 00 B8 85 42 2F 42 55 C6 CB 0F 36	...6...B/BU...6
0FE0	0F 00 04 85 42 2F 53 43 D2 D7 0F 36 0F 01 00 85	....B/SC...6....
0FF0	43 2F 53 43 D2 E3 0F 36 0F C0 03 86 42 4C 4B 2F	C/SC...6...BLK/
1000	44 D2 EF 0F 36 0F 8C 00 87 53 45 43 2F 54 52 CB	D...6...SEC/TR.
1010	FB 0F 36 0F 10 00 87 2B 4F 52 49 47 49 CE 08 10	..6....+ORIGI...
1020	FC 0E 2C 08 00 08 71 0D 85 0C 82 53 B0 16 10 76	.....q....S...v
1030	0F 06 00 82 52 B0 2A 10 76 0F 08 00 83 54 49 C2	....R.*.v....TI.
1040	33 10 76 0F 0A 00 85 57 49 44 54 C8 3C 10 76 0F	3.v...WIDT.(.v.
1050	0C 00 87 57 41 52 4E 49 4E C7 46 10 76 0F 0E 00	...WARNIN.F.v...
1060	85 46 45 4E 43 C5 52 10 76 0F 10 00 82 44 D0 60	.FENC.R.v...D.'
1070	10 76 0F 12 00 88 56 4F 43 2D 4C 49 4E CB 6C 10	.v...VOC-LIN.l.
1080	76 0F 14 00 83 42 4C CB 75 10 76 0F 16 00 82 49	v...BL.u.v...I
1090	CE 84 10 76 0F 18 00 83 4F 55 D4 8E 10 76 0F 1A	...v...OU...v..
10A0	00 83 53 43 D2 97 10 76 0F 1C 00 86 4F 46 46 53	..SC...v...OFFS
10B0	45 D4 A1 10 76 0F 1E 00 87 43 4F 4E 54 45 58 D4	E...v...CONTEX.
10C0	AB 10 76 0F 20 00 87 43 55 52 52 45 4E D4 B8 10	..v...CURREN...
10D0	76 0F 22 00 85 53 54 41 54 C5 C6 10 76 0F 24 00	v..."STAT...v.\$.
10E0	84 42 41 53 C5 D4 10 76 0F 26 00 83 44 50 CC E0	.BAS...v.&..DP..
10F0	10 76 0F 28 00 83 46 4C C4 EB 10 76 0F 2A 00 83	.v.(..FL...v.*..

Address	Hexadecimal	ASCII
1100	43 53 D0 F5 10 76 0F 2C 00 82 52 A3 FF 10 76 0F	CS...v...R...v.
1110	2E 00 83 48 4C C4 09 11 76 0F 30 00 85 45 52 52	...HL...v.0..ERR
1120	49 CE 12 11 76 0F 32 00 86 45 52 52 42 4C CB 1C	I...v.2..ERRBL..
1130	11 76 0F 34 00 84 48 45 52 C5 28 11 FC 0E 71 10	.v.4..HER.(...q.
1140	9F 0E 85 0C 85 41 4C 4C 4F D4 35 11 FC 0E 71 10	.....ALLO.5...q.
1150	6F 0E 85 0C 81 AC 44 11 FC 0E 3C 11 C3 0E 8F 0F	o.....D...(<.....
1160	4C 11 85 0C 82 43 AC 54 11 FC 0E 3C 11 DB 0E 55	L....C.T...(<...U
1170	0C 4C 11 85 0C 85 53 50 41 43 C5 64 11 FC 0E B1	.L....SPAC.d....
1180	0F 6B 1F 85 0C 38 B5 00 F5 02 B5 01 F5 03 94 03	.k...8.....
1190	60 38 B5 02 F5 00 B5 03 F5 01 94 03 60 82 55 BC	`8.....`U.
11A0	75 11 A4 11 20 91 11 B0 01 C8 94 02 E8 E8 4C 46	u... ..LF
11B0	08 82 55 BE 9D 11 B8 11 20 85 11 90 EC B0 EB 81	..U... ..
11C0	BC B1 11 C5 11 20 91 11 50 02 49 80 10 DC 30 D9	.....P.I...0.
11D0	82 3C BD BF 11 D7 11 20 85 11 50 02 49 80 10 C9	.(.....P.I...
11E0	30 C8 81 BD D0 11 E8 11 B5 01 D5 03 D0 04 B5 00	0.....
11F0	D5 02 94 03 F0 B3 D0 B2 83 55 3C BD E2 11 00 12	.....U(<.....
1200	20 85 11 90 A5 B0 A2 83 55 3E BD F8 11 0F 12 20	.....U).....
1210	91 11 90 96 B0 93 81 BE 07 12 1C 12 20 85 11 4C	.....L
1220	C8 11 82 3E BD 16 12 29 12 20 91 11 4C DA 11 88	...))...L...
1230	54 52 41 56 45 52 53 C5 22 12 FC 0E 33 0E F8 0D	TRAVERS."...3...
1240	71 0D 66 08 7F F8 0D B4 0E C3 11 D0 08 F1 FF 33	q.f.█.....3
1250	0E 2A 0E 85 0C 86 4C 41 54 45 53 D4 2F 12 FC 0E	*....LATES./...
1260	D0 10 9F 0E 9F 0E 85 0C 83 4C 46 C1 55 12 FC 0E	.....LF.U...
1270	9F 0F 89 0D 85 0C 83 43 46 C1 68 12 4E 0D 83 4E	.....CF.h.N..N
1280	46 C1 76 12 FC 0E 66 08 05 89 0D A8 0F 3A 12 85	F.v...f.....
1290	0C 83 50 46 C1 7E 12 FC 0E 55 0C 3A 12 66 08 05	..PF."...U.:f...
12A0	71 0D 85 0C 84 21 43 53 D0 91 12 FC 0E 3E 0C 05	q....!CS.....)
12B0	11 C3 0E 85 0C 86 3F 45 52 52 4F D2 A4 12 FC 0E	.....?ERRO.....
12C0	33 0E D0 08 08 00 43 17 B1 08 04 00 2A 0E 85 0C	3....C.....*
12D0	85 3F 43 4F 4D D0 B5 12 FC 0E DC 10 9F 0E E5 0C	?COM.....
12E0	66 08 11 BE 12 85 0C 85 3F 45 58 45 C3 D0 12 FC	f.....?EXE.....
12F0	0E DC 10 9F 0E 66 08 12 BE 12 85 0C 86 3F 50 41	.....f.....?PA
1300	49 52 D3 E7 12 FC 0E 89 0D 66 08 13 BE 12 85 0C	IR.....f.....
1310	84 3F 43 53 D0 FC 12 FC 0E 3E 0C 05 11 9F 0E 89	?CS.....)
1320	0D 66 08 14 BE 12 85 0C 88 3F 4C 4F 41 44 49 4E	.f.....?LOADIN
1330	C7 10 13 FC 0E 8A 10 9F 0E E5 0C 66 08 16 BE 12	.....f.....
1340	85 0C 87 43 4F 4D 50 49 4C C5 28 13 FC 0E D8 12	...COMPIL.(.....
1350	D3 0C 4E 0E 24 0D C1 0C 9F 0E 58 11 85 0C C1 DB	..N.\$.....X.....
1360	42 13 FC 0E 4B 0C DC 10 C3 0E 85 0C 81 DD 5E 13	B...K.....*
1370	FC 0E 66 08 C0 DC 10 C3 0E 85 0C 86 53 4D 55 44	..f.....SMUD
1380	47 C5 6C 13 FC 0E 5E 12 66 08 20 90 0E 85 0C 83	G.l...f.....
1390	48 45 D8 7B 13 FC 0E 66 08 10 E7 10 C3 0E 85 0C	HE.(...f.....
13A0	87 44 45 43 49 4D 41 CC 8F 13 FC 0E 66 08 0A E7	.DECIMA.....f...
13B0	10 C3 0E 85 0C 87 28 3B 43 4F 44 45 A9 A0 13 FC	.....(;CODE.....
13C0	0E D3 0C 5E 12 97 12 7C 12 C3 0E 85 0C 87 3C 42	...!.....<B
13D0	55 49 4C 44 D3 B5 13 FC 0E B0 17 84 13 85 0C A5	VILD.....
13E0	19 48 A5 18 48 B1 0A 18 69 03 85 18 C8 B1 0A 69	.H..H...i.....i
13F0	00 85 19 4C 57 0F C5 44 4F 45 53 BE CD 13 FC 0E	...LW..DOES.....

Address

Hexadecimal

ASCII

Address	Hexadecimal	ASCII
1400	4C 13 BF 13 66 08 4C 69 11 2C 08 DF 13 58 11 85	L...f.Li,...X..
1410	0C 85 43 4F 55 4E D4 F6 13 FC 0E 4E 0E 14 0D 33	..COUN.....N...3
1420	0E B4 0E 85 0C 84 54 59 50 C5 11 14 FC 0E 5F 0E	.....TYP.....
1430	D0 08 18 00 F8 0D 71 0D 33 0E 58 09 90 09 B4 0E	.....q.3.X.....
1440	6B 1F F1 08 F8 FF B1 08 04 00 2A 0E 85 0C 89 2D	k.....*.....-
1450	54 52 41 49 4C 49 4E C7 25 14 FC 0E 4E 0E 4B 0C	TRAILIN.%...N.K.
1460	58 09 F8 0D F8 0D 71 0D 37 0D B4 0E B1 0F 89 0D	X.....q.7.....
1470	D0 08 08 00 A6 0C B1 08 04 00 37 0D F1 08 E4 FF	.....7.....
1480	85 0C 84 28 2E 22 A9 4E 14 FC 0E 7B 09 19 14 4E	...("N...C...N
1490	0E 14 0D D3 0C 71 0D C1 0C 2C 14 85 0C C2 2E A2	.....q.....
14A0	82 14 FC 0E 66 08 22 DC 10 9F 0E D0 08 14 00 4C	....f.".....L
14B0	13 89 14 EC 15 3C 11 B4 0E 14 0D 4C 11 R1 08 0A	.....<.....L....
14C0	00 EC 15 3C 11 19 14 2C 14 85 0C 86 45 58 50 45	...<.....EXPE
14D0	43 D4 9D 14 FC 0E F8 0D 71 0D F8 0D 58 09 54 1F	C.....q...X.T.
14E0	4E 0E 66 08 08 E6 11 D0 08 18 00 F8 0D 90 09 E6	N.f.....
14F0	11 4E 0E D3 0C 4C 0D 71 0D C1 0C 71 0D B1 08 72	.N...L.q...q...r
1500	00 4E 0E 66 08 18 E6 11 D0 08 17 00 2A 0E D3 0C	.N.f.....*
1510	2A 0E 4E 0E 37 0D C1 0C 66 08 07 8B 1F B1 08 52	*.N.7...f.....R
1520	00 4E 0E 66 08 0D E6 11 D0 08 0E 00 A6 0C 2A 0E	.N.f.....*
1530	B1 0F 4B 0C B1 08 04 00 4E 0E D3 0C 4E 0E 90 09	..K.....N...N...
1540	E6 11 33 0E C1 0C D0 08 1D 00 D0 08 17 00 2A 0E	..3.....*
1550	66 08 07 D3 0C 37 0D 4E 0E 9F 0E 33 0E C1 0C B1	f...7.N...3....
1560	08 04 00 4B 0C 90 09 DB 0E 4B 0C 90 09 14 0D C3	...K.....K.....
1570	0E 6B 1F F1 08 69 FF 2A 0E 85 0C 85 51 55 45 52	.k...i.*...QUER
1580	D9 CB 14 FC 0E 42 10 9F 0E 66 08 50 D4 14 4B 0C	.....B...f.P..K.
1590	93 10 C3 0E 85 0C C1 80 7B 15 87 0C 85 45 52 41	.....<.....ERA
15A0	53 C5 96 15 FC 0E 4B 0C 10 0B 85 0C 86 42 4C 41	S.....K.....BLA
15B0	4E 4B D3 9C 15 FC 0E B1 0F 10 0B 85 0C 84 48 4F	NK.....HO
15C0	4C C4 AC 15 FC 0E A8 0F 18 11 6F 0E 18 11 9F 0E	L.....o.....
15D0	DB 0E 85 0C 83 50 41 C4 BD 15 FC 0E 3C 11 66 08	.....PA.....<f.
15E0	44 71 0D 85 0C 84 57 4F 52 C4 D4 15 FC 0E 8A 10	Dq...WOR.....
15F0	9F 0E 5F 0E D0 08 08 00 GC 1C B1 08 06 00 42 10	.....B.
1600	9F 0E 93 10 9F 0E 71 0D 33 0E 61 0A 3C 11 66 08	.....q.3.a.<f.
1610	22 B5 15 93 10 6F 0E F8 0D 89 0D C1 0C 7B 09 3C	"...o.....<(<
1620	11 DB 0E 71 0D 3C 11 14 0D D3 0C E9 0A 85 0C 88	...q.<.....
1630	28 4E 55 4D 42 45 52 A9 E5 15 FC 0E 14 0D 4E 0E	(NUMBER.....N.
1640	C1 0C B4 0E E7 10 9F 0E CA 09 D0 08 2C 00 33 0E	.....,3.
1650	E7 10 9F 0E 98 0B 2A 0E 08 0E E7 10 9F 0E 98 0B	.....*
1660	A2 0D F1 10 9F 0E 14 0D D0 08 08 00 55 0C F1 10	.....U...
1670	6F 0E D3 0C B1 08 C6 FF D3 0C 85 0C 87 4E 55 4D	o.....NUM
1680	42 45 52 BF 2F 16 FC 0E 4B 0C 4B 0C 08 0E 4E 0E	BER./...K.K...N.
1690	14 0D B4 0E 66 08 2D E6 11 4E 0E C1 0C 71 0D 4E	....f.-..N...q.N
16A0	0E C1 0C A8 0F F1 10 C3 0E A1 08 4E 0E C1 0C 3A	.....N...:
16B0	16 4E 0E B4 0E 66 08 2C 89 0D 97 0F B6 11 4E 0E	.N...f.....N.
16C0	D0 08 E3 FF D3 0C 71 0D F8 0D E6 11 33 0E B4 0E	.....q.....3...
16D0	B1 0F 89 0D 12 0C D0 08 0A 00 75 09 A1 08 55 0C	.....u...U.
16E0	85 0C D3 0C D0 08 04 00 E1 0D 4B 0C 85 0C 86 4E	.....K...N
16F0	55 4D 42 45 D2 7C 16 FC 0E 86 16 4B 0C BE 12 85	UMBE.!:....K....

Address	Hexadecimal	ASCII
1700	0C 85 2D 46 49 4E C4 EE 16 FC 0E B1 0F EC 15 3C	..-FIN.....<
1710	11 C2 10 9F 0E 9F 0E FB 09 4E 0E E5 0C D0 08 0A	.....N.....
1720	00 2A 0E 3C 11 5E 12 FB 09 85 0C 87 28 41 42 4F	.*.<.....(ABO
1730	52 54 A9 01 17 FC 0E D3 19 85 0C 85 45 52 52 4F	RT.....ERRO
1740	D2 2B 17 FC 0E 5C 10 9F 0E 02 0D D0 08 04 00 35	+....\.....5
1750	17 3C 11 19 14 2C 14 89 14 04 20 07 3F 20 89 1D	<.....? ..
1760	61 0C 93 10 9F 0E 24 11 C3 0E 8A 10 9F 0E 31 11	a.....\$......1.
1770	C3 0E A3 19 85 0C 83 49 44 AE 3B 17 FC 0E DA 15	.....ID.;.....
1780	66 08 20 66 08 5F 10 0B 4E 0E 97 12 6E 12 F8 0D	f. f. _ . N . n . .
1790	89 0D DA 15 33 0E E9 0A DA 15 19 14 66 08 1F FD	....3.....f...
17A0	0B 2C 14 7D 11 85 0C 86 43 52 45 41 54 C5 76 17	.,.)....CREAT.v.
17B0	FC 0E 42 10 4B 0C 66 08 A0 71 0D A2 11 8F 0F BE	..B.K.f..q.....
17C0	12 09 17 D0 08 0E 00 2A 0E 84 12 7C 17 9F 0F 89	.....*...i.....
17D0	1D 7D 11 3C 11 4E 0E B4 0E 4E 10 9F 0E D1 1A 14	.)<.N...N.....
17E0	0D 4C 11 71 10 B4 0E 66 08 FD E6 11 4C 11 4E 0E	.L.q...f...L.N.
17F0	66 08 A0 90 0E 3C 11 37 0D 66 08 80 90 0E 5E 12	f....<.7.f.....
1800	58 11 D0 10 9F 0E C3 0E 3C 11 24 0D 58 11 85 0C	X.....<\$.X...
1810	C9 5B 43 4F 4D 50 49 4C 45 DD A7 17 FC 0E 09 17	[COMPILE.....
1820	E5 0C 4R 0C BE 12 2A 0E 7C 12 58 11 85 0C C7 4C	..K...*.i.X...L
1830	49 54 45 52 41 CC 10 18 FC 0E DC 10 9F 0E D0 08	ITERA.....
1840	08 00 4C 13 2C 08 58 11 85 0C C8 43 4C 49 54 45	..L...X...CLITE
1850	52 41 CC 2E 18 FC 0E DC 10 9F 0E D0 08 08 00 4C	RA.....L
1860	13 66 08 69 11 85 0C C8 44 4C 49 54 45 52 41 CC	f.i....DLITERA.
1870	4A 18 FC 0E DC 10 9F 0E D0 08 08 00 33 0E 38 18	J.....3.8.
1880	38 18 85 0C 86 3F 53 54 41 43 CB 67 18 AA 18 66	8....?STAC.g...f
1890	08 FF 3E 0C 24 0D A2 11 55 0C BE 12 3E 0C 66 08	..).\$.U...).f.
18A0	54 A2 11 66 08 07 BE 12 85 0C E0 54 90 03 4C 46	T..f.....T..LF
18B0	08 4C FC 0E 89 49 4E 54 45 52 50 52 45 D4 84 18	.L...INTERPRE...
18C0	FC 0E 09 17 D0 08 1E 00 DC 10 9F 0E C3 11 D0 08	.....
18D0	0A 00 7C 12 58 11 B1 08 06 00 7C 12 8A 08 8D 18	..i.X.....i.....
18E0	B1 08 2E 00 3C 11 F7 16 F1 10 9F 0E 14 0D D0 08	....<.....
18F0	08 00 72 18 B1 08 18 00 2A 0E 4E 0E 2C 08 00 01	..r.....*N.....
1900	A2 11 D0 08 08 00 55 18 B1 08 04 00 38 18 8D 18	.....U.....8...
1910	B1 08 B0 FF 85 0C 89 49 4D 4D 45 44 49 41 54 C5	.....IMMEDIAT.
1920	B4 18 FC 0E 5E 12 66 08 40 90 0E 85 0C 8A 56 4F	.....f.@.....VO
1930	43 41 42 55 4C 41 52 D9 16 19 FC 0E D7 13 2C 08	CABULAR.....
1940	81 A0 58 11 D0 10 9F 0E 7C 12 58 11 3C 11 80 10	..X.....i.X.<...
1950	9F 0E 58 11 80 10 C3 0E BF 13 4C DF 13 24 0D C2	..X.....L.\$..
1960	10 C3 0E 85 0C C5 46 4F 52 54 C8 2D 19 5A 19 81	.....FORT.-.Z..
1970	A0 C9 61 00 00 8B 44 45 46 49 4E 49 54 49 4F 4E	..a...DEFINITION
1980	D3 65 19 FC 0E C2 10 9F 0E D0 10 C3 0E 85 0C C1	.e.....
1990	A8 75 19 FC 0E 66 08 29 EC 15 85 0C 84 51 55 49	.u...f.)....QUI
19A0	D4 8F 19 FC 0E 4B 0C 8A 10 C3 0E 62 13 71 0C 8B	.....K.....b.q..
19B0	1F 83 15 C0 18 DC 10 9F 0E E5 0C D0 08 08 00 89	.....
19C0	14 03 20 4F 4B B1 08 E6 FF 85 0C 85 41 42 4F 52	.. OK.....ABOR
19D0	D4 9C 19 FC 0E 71 0C 61 0C D0 61 8B 1F 89 14 0E	.....q.a.a.....
19E0	07 46 4F 52 54 48 20 52 45 53 54 41 52 54 3C 28	.FORTH RESTART(<
19F0	6D 19 83 19 A3 19 85 0C 61 0C 66 08 22 20 10 9F	m.....a.f." ..

Address

Hexadecimal

ASCII

Address	Hexadecimal	ASCII
1A00	0E 4E 0E 2C 08 D5 0F C3 0E 66 08 24 20 10 9F 0E	.N.....f.\$ ...
1A10	DF 0F 9F 0F 71 0D A4 0B 89 0D 2C 08 C9 0F C3 0E	....q.....
1A20	1C 1C 8B 1F 71 0C 8C 61 55 46 46 45 52 53 20 45	....q...aUFFERS E
1A30	4D 50 54 49 45 44 D3 19 84 43 4F 4C C4 CB 19 41	MPTIED...COL...A
1A40	1A AD 0C 08 8D 71 19 AD 0D 08 8D 72 19 A2 19 A9	....q.....r....
1A50	F8 A0 15 D0 06 A2 19 A9 D5 A0 0F 86 19 85 18 AD	.....
1A60	10 08 85 0C AD 11 08 85 0D B9 0C 08 91 0C 88 10	.....
1A70	F8 A9 6C 85 09 4C 73 0C 84 53 2D 3E C4 38 1A 81	..l..Ls..S->.8..
1A80	1A B5 01 10 01 88 98 48 4C 3F 08 82 2B AD 78 1A	.....HL?...+.x.
1A90	FC 0E 02 0D D0 08 04 00 C8 0D 85 0C 83 44 2B AD	.....D+.
1AA0	8B 1A FC 0E 02 0D D0 08 04 00 E1 0D 85 0C 83 41	.....A
1AB0	42 D3 9C 1A FC 0E 4E 0E 90 1A 85 0C 84 44 41 42	B.....N.....DAB
1AC0	D3 AE 1A FC 0E 4E 0E A2 1A 85 0C 83 4D 49 CE BC	.....N.....MI..
1AD0	1A FC 0E F8 0D F8 0D 1A 12 D0 08 04 00 33 0E 2A	.....3.*
1AE0	0E 85 0C 83 4D 41 D8 CB 1A FC 0E F8 0D F8 0D C3	....MA.....
1AF0	11 D0 08 04 00 33 0E 2A 0E 85 0C 82 4D AA E3 1A	.....3.*....M...
1B00	FC 0E F8 0D F8 0D 28 0C C1 0C B4 1A 33 0E B4 1A	.....(.....3....
1B10	98 0B D3 0C A2 1A 85 0C 82 4D AF FB 1A FC 0E F8	.....M.....
1B20	0D C1 0C C1 0C C3 1A 7B 09 B4 1A B3 0B D3 0C 7B	.....(.....(
1B30	09 28 0C 90 1A 33 0E D3 0C 90 1A 33 0E 85 0C 84	.(...3.....3....
1B40	2F 4D 4F C4 18 1B FC 0E C1 0C 7F 1A D3 0C 1D 1B	/MO.....#.....
1B50	85 0C 81 AF 3F 1B FC 0E 46 1B 33 0E 2A 0E 85 0C	.....?...F.3.*...
1B60	85 2A 2F 4D 4F C4 52 1B FC 0E C1 0C 00 1B D3 0C	.* /MO.R.....
1B70	1D 1B 85 0C 82 2A AF 60 1B FC 0E 68 1B 33 0E 2A	.....*...'...h.3.*
1B80	0E 85 0C 85 4D 2F 4D 4F C4 74 1B FC 0E C1 0C 4B	....M/MO.t.....K
1B90	0C 7B 09 B3 0B D3 0C 33 0E C1 0C B3 0B D3 0C 85	.(.....3.....
1BA0	0C 83 4D 4F C4 83 1B FC 0E 46 1B 2A 0E 85 0C 83	..MO.....F.*....
1BB0	55 53 C5 A1 1B 57 0F E0 97 84 50 52 45 D6 AF 1B	US...W....PRE...
1BC0	57 0F E0 97 84 2B 42 55 C6 B9 1B FC 0E DF 0F 9F	W....+BU.....
1BD0	0F 71 0D 71 0D 4E 0E D3 0F E6 11 D0 08 06 00 2A	.q.q.N.....*
1BE0	0E C7 0F 4E 0E C0 1B 9F 0E 89 0D 85 0C 86 55 50	...N.....UP
1BF0	44 41 54 C5 C4 1B FC 0E C0 1B 9F 0E 9F 0E 2C 08	DAT.....
1C00	00 80 12 0C C0 1B 9F 0E C3 0E 85 0C 8D 45 4D 50	.....EMP
1C10	54 59 2D 42 55 46 46 45 52 D3 ED 1B FC 0E C7 0F	TY-BUFFER.....
1C20	4E 0E C0 1B C3 0E 4E 0E B5 1B C3 0E D3 0F F8 0D	N.....N.....
1C30	89 0D A4 15 85 0C 85 45 42 55 46 D3 0C 1C FC 0E	.....EBUF.....
1C40	1C 1C 85 0C 83 44 52 B0 36 1C FC 0E 4B 0C B4 10	.....DR.6...K...
1C50	C3 0E 85 0C 83 44 52 B1 44 1C FC 0E 04 10 B4 10	.....DR.D.....
1C60	C3 0E 85 0C 84 57 42 55 C6 54 1C FC 0E C1 0C 7B	.....WBU.T.....(
1C70	09 24 0D 7B 09 9F 0E 2C 08 FF 7F FD 0B 4E 0E D3	.\$.(.....#...N..
1C80	0C C3 0E 4B 0C A1 20 85 0C 86 42 55 46 46 45 D2	...K... ..BUFFE.
1C90	64 1C FC 0E B5 1B 9F 0E 4E 0E C1 0C CB 1B D0 08	d.....N.....
1CA0	FC FF B5 1B C3 0E 7B 09 9F 0E 02 0D D0 08 06 00	.....(.....
1CB0	7B 09 6B 1C 7B 09 C3 0E 7B 09 C0 1B C3 0E D3 0C	(.k.(.(.....
1CC0	24 0D 85 0C 85 42 4C 4F 43 CB 89 1C FC 0E B4 10	\$. ...BLOC.....
1CD0	9F 0E 71 0D C1 0C C0 1B 9F 0E 4E 0E 9F 0E 7B 09	..q.....N...(
1CE0	89 0D 4E 0E 71 0D D0 08 32 00 CB 1B E5 0C D0 08	..N.q...2.....
1CF0	12 00 2A 0E 7B 09 92 1C 4E 0E 7B 09 55 0C A1 20	..*(....N.(U..

Address	Hexadecimal	ASCII
1D00	4C 0D 4E 0E 9F 0E 7B 09 89 0D 4E 0E 71 0D E5 0C	L.N... ( ... N.q...
1D10	D0 08 D8 FF 4E 0E C0 1B C3 0E D3 0C 2A 0E 24 0D	...N.....*.\$.
1D20	85 0C 85 46 4C 55 53 C8 C4 1C FC 0E C0 1B 9F 0E	...FLUS.....
1D30	4E 0E 9F 0E 02 0D D0 08 06 00 4E 0E 6B 1C CB 1B	N.....N.k...
1D40	E5 0C D0 08 EC FF 2A 0E 85 0C 86 28 4C 49 4E 45	.....*(LINE
1D50	A9 22 1D FC 0E C1 0C BB 0F DF 0F 68 1B D3 0C EB	.....h....
1D60	0F A4 0B 71 0D CC 1C 71 0D BB 0F 85 0C 85 2E 4C	...q...q.....L
1D70	49 4E C5 4A 1D FC 0E 53 1D 5A 14 2C 14 85 0C 87	IN.J...S.Z.,....
1D80	4D 45 53 53 41 47 C5 6D 1D FC 0E 5C 10 9F 0E D0	MESSAG.m...\....
1D90	08 1A 00 5F 0E D0 08 10 00 9F 0F B4 10 9F 0E EB	....._.....
1DA0	0F 56 1B 89 0D 75 1D E1 08 0D 00 89 14 06 4D 53	.V...u.....MS
1DB0	47 20 23 20 D4 23 85 0C 84 4C 4F 41 C4 7F 1D FC	G * #...LOA.#..
1DC0	0E 8A 10 9F 0E C1 0C 93 10 9F 0E C1 0C 4B 0C 93	.....K..
1DD0	10 C3 0E 8A 10 C3 0E C0 18 D3 0C 93 10 C3 0E D3	.....
1DE0	0C 8A 10 C3 0E 85 0C C3 2D 2D FE B8 1D FC 0E 33	.....--.....3
1DF0	13 4B 0C 93 10 C3 0E 55 0C 8A 10 6F 0E 85 0C 84	.K....U...o....
1E00	3F 4B 45 D9 E7 1D 08 1E AD 00 C0 10 03 29 7F A8	?KE.....)#.
1E10	98 4C 41 0C 84 58 4B 45 D9 FF 1D 1D 1E 20 0C FD	.LA.XKE.....
1E20	29 7F D0 02 A9 5C C9 1D D0 02 A9 5B 4C 41 0C 84	)#\.....[LA..
1E30	42 45 4C CC 14 1E 38 1E 20 DD FB 4C 46 08 83 2D	BEL...8...LF..-
1E40	42 D3 2F 1E 46 1E A9 C1 38 20 2C FC 4C 46 08 82	B./F...8...LF..
1E50	42 D3 3E 1E 56 1E A9 C2 D0 EE 82 4C C6 4F 1E 61	B.)V.....L.O.a
1E60	1E A9 C3 D0 E3 83 2D 4C C6 5A 1E 6D 1E A9 C4 D0	.....-L.Z.m....
1E70	D7 84 43 45 4F CC 65 1E 7A 1E A9 C5 D0 CA 84 43	..CEO.e.z.....C
1E80	45 4F D0 71 1E 87 1E A9 C6 D0 BD 85 43 4C 45 41	EO.q.....CLEA
1E90	D2 7E 1E 95 1E A9 C0 D0 AF 85 58 45 4D 49 D4 8B	..~.....XEMI..
1EA0	1E A3 1E B5 00 C9 20 90 02 09 80 A4 24 91 28 4C	.....\$. (L
1EB0	68 09 85 53 45 4D 49 D4 99 1E BC 1E A9 01 20 6F	h..SEMI.....o
1EC0	08 98 86 0E 85 12 48 A9 04 85 13 A2 08 A0 00 B1	.....H.....
1ED0	10 C9 20 90 02 09 80 91 12 C8 C0 28 D0 F1 18 A5	.....(....
1EE0	12 69 80 85 12 90 02 E6 13 18 A5 10 69 28 85 10	.i.....i(..
1EF0	90 02 E6 11 CA D0 D6 68 18 69 28 C9 78 D0 C5 A6	.....h.i(x...)
1F00	0E 4C 46 08 87 4F 55 54 50 55 54 A1 B2 1E FC 0E	.LF..OUTPUT....
1F10	66 08 36 2C 08 F0 FD 08 0E 5F 0E D0 08 11 00 66	f.6,....._.....f
1F20	08 C0 71 0D 2C 08 00 01 A4 0B 33 0E 2A 0E 33 0E	..q.,.....3.*.3.
1F30	C3 0E 85 0C 86 49 4E 50 55 54 A1 04 1F FC 0E 66	.....INPUT.....f
1F40	08 38 2C 08 1B FD 2C 08 17 1F C1 0C 85 0C 83 4B	.8,.....K
1F50	45 D9 34 1F 56 1F 20 35 FD C9 95 D0 04 A4 24 B1	E.4.V. 5.....\$.
1F60	28 4C 20 1E 84 45 4D 49 D4 4E 1F 6D 1F 98 38 A0	(L ..EMI.N.m..8.
1F70	1A 71 0C 91 0C C8 A9 00 71 0C 91 0C B5 00 09 80	.q.....q.....
1F80	20 ED FD 4C 68 09 82 43 D2 64 1F FC 0E 66 08 0D	..Lh..C.d...f..
1F90	6B 1F 85 0C F9 20 8E FD 4C 46 08 49 83 F0 F6 AD	k....LF.I....
1FA0	10 C0 B0 F1 38 B0 E7 89 3F 54 45 52 4D 49 4E 41	....8...?TERMINA
1FB0	CC 86 1F B5 1F AD 00 C0 10 08 C9 83 D0 04 AD 10	.....
1FC0	C0 C8 98 4C 41 0C 83 4D 4F CE A7 1F CE 1F 86 0E	...LA..MO.....
1FD0	00 84 52 2F 57 C4 C6 1F 57 0F 01 60 01 00 0C FF	..R/W...W...`....
1FE0	EB 1F 00 B3 00 00 01 20 FE 60 01 00 01 EF D8 84	.....\.....
1FF0	52 2F 57 A1 D1 1F FC 0E D8 1F 71 0D DB 0E 85 0C	R/W.....q.....



Address

Hexadecimal

ASCII

Address	Hexadecimal	ASCII
2000	A9 1F A0 DA 78 20 00 BD 58 90 05 A6 0E 4C D5 0C	....z..X....L..
2010	60 85 28 52 2F 57 A9 EF 1F 1B 20 8A 18 69 0A 85	\.(R/W....i..
2020	0E B5 00 8D DE 1F B5 04 8D DC 1F C8 B5 06 D0 01	.....
2030	C8 8C E6 1F B5 08 8D E2 1F B4 09 A9 04 85 10 B5	.....
2040	02 AE 14 10 E0 0D D0 25 8D DF 1F 8C E3 1F 20 00	.....%.....
2050	20 EE E3 1F AC DF 1F C8 C0 0D D0 05 A0 00 EE DE	.....
2060	1F 8C DF 1F C6 10 D0 E6 A6 0E 4C 4D 0C 18 69 03	.....LM.i.
2070	8D DF 1F C8 C8 C8 8C E3 1F 20 00 20 CE E3 1F CE	.....
2080	DF 1F C6 10 D0 F3 F0 E0 84 52 57 54 D3 11 20 91	.....RWT..
2090	20 86 0E 20 00 20 A6 0E 4C 4D 0C 83 52 2F D7 88	...LM..R/..
20A0	20 FC 0E 33 0E 04 10 F8 0D C3 11 D0 08 0E 00 8F	..3.....
20B0	0F 33 0E 04 10 89 0D B1 08 06 00 55 0C 33 0E 37	.3.....U.3.7
20C0	0D 4E 0E 04 10 B6 11 66 08 06 BE 12 56 0D 56 0D	.N.....f....V.V.
20D0	12 10 46 1B 19 20 66 08 08 BE 12 85 0C 89 45 52	..F...f.....ER
20E0	41 53 45 44 49 53 CB 9B 20 FC 0E 66 08 FE 97 0F	ASEDIS...f....
20F0	F6 1F 9F 0F 66 08 0C F6 1F 8F 0F B4 10 9F 0E E5	....f.....
2100	0C 89 0D 8F 0F F6 1F 8F 20 4B 0C 97 0F F6 1F 66	.....K.....f
2110	08 08 BE 12 12 10 66 08 0D E6 11 D0 08 1E 00 DA	.....f.....
2120	15 DF 0F B1 0F 10 0B 04 10 14 0D 55 0C 58 09 DA	.....U.X..
2130	15 90 09 4B 0C A1 20 F1 08 F6 FF 85 0C C1 A7 DD	...K.....
2140	20 FC 0E 09 17 E5 0C 4B 0C BE 12 2A 0E 38 18 85	.....K...*.8..
2150	0C 88 28 46 4F 52 47 45 54 A9 3D 21 FC 0E 4E 0E	..(FORGET.=!..N.
2160	68 10 9F 0E A2 11 66 08 15 BE 12 C1 0C 80 10 9F	h.....f.....
2170	0E 7B 09 F8 0D A2 11 D0 08 12 00 6D 19 83 19 9F	.(.....m....
2180	0E 4E 0E 80 10 C3 0E B1 08 E8 FF 4E 0E 9F 0F 89	.N.....N....
2190	0D 97 12 6E 12 9F 0E 4E 0E 7B 09 A2 11 D0 08 F2	...n...N.(.....
21A0	FF F8 0D 4C 0D C3 0E 9F 0E 5F 0E E5 0C D0 08 DC	...L.....
21B0	FF D3 0C 71 10 C3 0E 85 0C 86 46 4F 52 47 45 D4	...q.....FORGE.
21C0	51 21 FC 0E 41 21 84 12 5C 21 85 0C 84 42 41 43	Q!..A!..A!...BAC
21D0	CB B9 21 FC 0E 3C 11 89 0D 58 11 85 0C C5 42 45	...!<...X...BE
21E0	47 49 CE CC 21 FC 0E D8 12 3C 11 55 0C 85 0C C5	GI...!<...U....
21F0	45 4E 44 49 C6 DD 21 FC 0E D8 12 8F 0F 05 13 3C	ENDI...!<.....
2200	11 F8 0D 89 0D 33 0E C3 0E 85 0C C4 54 48 45 CE	.....3.....THE.
2210	EF 21 FC 0E F7 21 85 0C C2 44 CF 0B 22 FC 0E 4C	..!...!...D...L
2220	13 58 09 3C 11 97 0F 85 0C C4 4C 4F 4F D0 18 22	.X.<.....LOO.."
2230	FC 0E 97 0F 05 13 4C 13 F1 08 D3 21 85 0C C5 2B	.....L....!...+
2240	4C 4F 4F D0 29 22 FC 0E 97 0F 05 13 4C 13 21 09	LOO.)".....L.!
2250	D3 21 85 0C C5 55 4E 54 49 CC 3E 22 FC 0E 55 0C	..!...UNTI.)"..U.
2260	05 13 4C 13 D0 08 D3 21 85 0C C3 45 4E C4 54 22	..L....!...EN.T"
2270	FC 0E 5C 22 85 0C C5 41 47 41 49 CE 6A 22 FC 0E	..\"...AGAI.j"..
2280	55 0C 05 13 4C 13 B1 08 D3 21 85 0C C6 52 45 50	U...L....!...REP
2290	45 41 D4 76 22 FC 0E C1 0C C1 0C 7E 22 D3 0C D3	EA.v".....~"...
22A0	0C 8F 0F 89 0D F7 21 85 0C C2 49 C6 8C 22 FC 0E	.....!...I..."
22B0	4C 13 D0 08 3C 11 4B 0C 58 11 8F 0F 85 0C C4 45	L...<K.X.....E
22C0	4C 53 C5 A9 22 FC 0E 8F 0F 05 13 4C 13 B1 08 3C	LS..."...L...<
22D0	11 4B 0C 58 11 33 0E 8F 0F F7 21 8F 0F 85 0C C5	.K.X.3.....!
22E0	57 48 49 4C C5 BE 22 FC 0E AE 22 24 0D 85 0C 86	WHIL..."...\$....
22F0	53 50 41 43 45 D3 DF 22 FC 0E 4B 0C E9 1A 5F 0E	SPACE..."...K....

Address

Hexadecimal

ASCII

Address	Hexadecimal	ASCII
2300	D0 08 0C 00 4B 0C 58 09 7D 11 F1 08 FC FF 85 0C	....K.X.).....
2310	82 3C A3 EF 22 FC 0E DA 15 18 11 C3 0E 85 0C 82	.<...".....
2320	23 BE 10 23 FC 0E 2A 0E 2A 0E 18 11 9F 0E DA 15	#...*.*.....
2330	F8 0D 89 0D 85 0C 84 53 49 47 CE 1F 23 FC 0E 08	.....SIG..#...
2340	0E 02 0D D0 08 07 00 66 08 2D C4 15 85 0C 81 A3	.....f.-.....
2350	36 23 FC 0E E7 10 9F 0E 8B 1B 08 0E 66 08 09 F8	6#.....f....
2360	0D C3 11 D0 08 07 00 66 08 07 71 0D 66 08 30 71	.....f..q.f.0q
2370	0D C4 15 85 0C 82 23 D3 3E 23 FC 0E 52 23 F8 0D	.....#..N#..R#..
2380	F8 0D 12 0C E5 0C D0 08 F4 FF 85 0C 83 44 2E D2	.....D..
2390	75 23 FC 0E C1 0C 33 0E F8 0D C3 1A 15 23 7A 23	u#...3.....#z#
23A0	3D 23 24 23 D3 0C F8 0D 89 0D F8 22 2C 14 85 0C	=# \$# .....",...
23B0	82 44 AE 8C 23 FC 0E 4B 0C 92 23 7D 11 85 0C 82	.D..#..K..#}....
23C0	2E D2 B0 23 FC 0E C1 0C 7F 1A D3 0C 92 23 85 0C	...#.....#.....#..
23D0	81 AE BF 23 FC 0E 7F 1A B5 23 85 0C 81 BF D0 23	...#.....#.....#
23E0	FC 0E 9F 0E D4 23 85 0C 82 55 AE DC 23 FC 0E 4B	.....#...U..#..K
23F0	0C B5 23 85 0C 84 4C 49 53 D4 E8 23 FC 0E AA 13	..#...LIS..#.....
2400	8B 1F 4E 0E A7 10 C3 0E 89 14 06 53 43 52 20 23	..N.....SCR #
2410	20 D4 23 F7 0F BB 0F 56 1B 4B 0C 58 09 8B 1F 90	.#...V.K.X....
2420	09 97 0F C4 23 7D 11 90 09 A7 10 9F 0E 75 1D F1	....#).....u..
2430	08 EC FF 8B 1F 85 0C 85 49 4E 44 45 D8 F5 23 FC	.....INDE..#.
2440	0E 66 08 0C 6B 1F 8B 1F 14 0D 33 0E 58 09 8B 1F	.f..k....3.X...
2450	90 09 97 0F C4 23 7D 11 4B 0C 90 09 75 1D B3 1F	.....#)K...u...
2460	D0 08 04 00 A6 0C F1 08 E6 FF 85 0C 85 52 4C 49	.....RLI
2470	53 D4 37 24 FC 0E 14 0D 33 0E 58 09 90 09 FC 23	S.7\$....3.X....#
2480	F1 08 FA FF 85 0C 85 56 4C 49 53 D4 6C 24 FC 0E	.....VLIS.1\$..
2490	66 08 80 9D 10 C3 0E C2 10 9F 0E 9F 0E 9D 10 9F	f.....
24A0	0E BB 0F 1A 12 D0 08 0A 00 8B 1F 4B 0C 9D 10 C3	.....K....
24B0	0E 4E 0E 7C 17 7D 11 7D 11 97 12 6E 12 9F 0E 4E	.N.().).n..N
24C0	0E E5 0C B3 1F 12 0C D0 08 D4 FF 2A 0E 85 0C 84	.....*....
24D0	44 55 4D D0 86 24 FC 0E F8 0D 71 0D 33 0E 58 09	DUM..\$.q.3.X.
24E0	8B 1F 90 09 ED 23 89 14 02 3D 20 90 09 B4 0E D4	.....#...=.....
24F0	23 B3 1F D0 08 04 00 A6 0C F1 08 E5 FF 85 0C 84	#.....
2500	50 49 43 CB CF 24 08 25 16 00 18 8A 75 00 A8 B9	PIC..\$.%...u...
2510	00 00 95 00 B9 01 00 95 01 4C 46 08 84 52 4F 4C	.....LF..ROL
2520	CC FF 24 25 25 16 00 18 8A 75 00 E8 E8 86 0E AA	..\$%%...u.....
2530	B5 00 48 B5 01 48 E4 0E F0 0E B5 FF 95 01 B5 FE	..H..H.....
2540	95 00 CA CA E4 0E D0 F2 68 4C 41 08 85 53 48 49	.....hLA..SHI
2550	46 D4 1C 25 56 25 E8 E8 B4 FE F0 13 10 0A 56 01	F..%V%.....V.
2560	76 00 C8 D0 F9 4C 46 08 16 00 36 01 88 D0 F9 4C	v...LF...6...L
2570	46 08 89 32 56 41 52 49 41 42 4C C5 4C 25 FC 0E	F..2VARIABLE%..
2580	51 0F 58 11 85 0C 89 32 43 4F 4E 53 54 41 4E D4	Q.X....2CONSTAN.
2590	72 25 FC 0E 2E 0F 58 11 BF 13 A0 05 CA B1 0A 95	r%...X.....
25A0	00 88 C0 01 D0 F6 4C 46 08 84 32 44 55 D0 86 25	.....LF..2DU..%
25B0	B2 25 A9 04 86 0E 18 65 0E A8 CA 88 B9 00 00 95	%.e.....
25C0	00 C4 0E D0 F5 4C 46 08 82 32 C0 A9 25 CF 25 A0	.....LF..2..%..%
25D0	03 B5 00 85 10 B5 01 85 11 E8 E8 CA B1 10 95 00	.....
25E0	88 10 F8 4C 46 08 82 32 A1 C8 25 ED 25 A9 04 85	...LF..2..%..%...
25F0	12 B5 00 85 10 B5 01 85 11 E8 E8 B5 00 91 10 E8	.....

Address	Hexadecimal																ASCII
2600	C8	C4	12	D0	F6	4C	46	08	85	32	53	57	41	D0	E6	25	.....LF..2SWA..%
2610	12	26	A9	04	86	0E	18	65	0E	A8	84	10	B5	00	48	B9	.&.....e.....H.
2620	00	00	95	00	68	99	00	00	E8	C8	E4	10	D0	EE	A6	0E	....h.....
2630	4C	46	08	85	32	4F	56	45	D2	08	26	3D	26	A9	04	85	LF..2OVE..&=&...
2640	10	8A	18	65	10	85	0E	65	10	A8	CA	88	B9	00	00	95	...e...e.....
2650	00	C4	0E	D0	F5	4C	46	08	84	32	52	4F	D4	33	26	61	.....LF..2RO.3&a
2660	26	A9	04	85	10	84	11	86	0E	18	65	0E	AA	65	10	A8	&.....e...e..
2670	88	CA	B1	10	48	B9	00	00	91	10	B5	00	99	00	00	68	....H.....h
2680	95	00	E4	0E	D0	EA	4C	46	08	83	44	30	BC	58	26	91	.....LF..DO.X&.
2690	26	16	01	E8	E8	4C	06	0D	83	44	30	ED	89	26	FC	0E	&....L...DO..&..
26A0	12	0C	E5	0C	85	0C	82	44	AD	98	26	FC	0E	E1	0D	A2	.....D..&.....
26B0	0D	85	0C	82	44	BC	A6	26	FC	0E	AB	26	8F	26	85	0C	....D..&...&...&..
26C0	82	44	BD	B3	26	FC	0E	AB	26	9E	26	85	0C	82	44	BE	.D..&...&...&..D.
26D0	C0	26	FC	0E	10	26	B8	26	85	0C	83	44	3C	RD	CD	26	.&...&...&...D(<.&
26E0	FC	0E	D2	26	FB	0C	85	0C	83	44	3E	BD	DA	26	FC	0E	...&...D)...&..
26F0	B8	26	FB	0C	85	0C	84	54	48	52	D5	E8	26	FC	0E	14	.&....THR..&...
2700	0D	33	0E	58	09	90	09	BF	1D	E7	10	9F	0E	AA	13	90	.3.X.....
2710	09	D4	23	E7	10	C3	0E	F1	08	EC	FF	85	0C	84	44	55	..#.....DU
2720	4D	D0	F6	26	FC	0E	E7	10	9F	0E	08	0E	08	0E	95	13	M..&.....
2730	F8	0D	71	0D	33	0E	58	09	8B	1F	90	09	4B	0C	9F	0F	..q.3.X....K...
2740	92	23	90	09	66	08	08	71	0D	90	09	58	09	90	09	B4	..#..f..q...X....
2750	0E	97	0F	C4	23	F1	08	F6	FF	8F	0F	F8	22	90	09	66	....#....."..f
2760	08	08	71	0D	90	09	B3	1F	D0	08	04	00	A6	0C	58	09	..q.....X.
2770	90	09	B4	0E	66	08	7F	FD	0B	4E	0E	66	08	20	C3	11	....f.#..N.f..
2780	D0	08	07	00	2A	0E	66	08	2E	6B	1F	F1	08	E3	FF	66	....*..f..k....f
2790	08	08	21	09	A4	FF	8B	1F	E7	10	C3	0E	85	0C	88	28	..!.....(
27A0	41	42	4F	52	54	22	A9	1D	27	FC	0E	D0	08	16	00	7D	ABORT".....)
27B0	11	61	0C	3C	11	19	14	2C	14	7D	11	90	09	19	14	2C	.a.<.....)
27C0	14	A3	19	90	09	B4	0E	14	0D	D3	0C	71	0D	C1	0C	85	.....q.....
27D0	0C	84	57	4F	52	C4	9E	27	FC	0E	EC	15	3C	11	85	0C	..WOR.....<...
27E0	C6	41	42	4F	52	54	A2	D1	27	FC	0E	4C	13	A9	27	66	..ABORT'..L..'f
27F0	08	22	D8	27	B4	0E	14	0D	4C	11	85	0C	86	46	52	45	.."'....L....FRE
2800	45	5A	C5	E0	27	FC	0E	5E	12	66	08	0C	20	10	C3	0E	EZ.....f....
2810	3C	11	66	08	1E	20	10	C3	0E	3C	11	66	08	1C	20	10	<.f...<.f....
2820	C3	0E	80	10	9F	0E	66	08	20	20	10	C3	0E	85	0C	8A	.....f.....
2830	4E	45	57	2D	53	59	53	54	45	CD	FC	27	FC	0E	4B	0C	NEW-SYSTE...'..K.
2840	5C	10	C3	0E	2C	08	05	08	2C	08	F2	03	C3	0E	66	08	\.....f.
2850	AD	2C	08	F4	03	DB	0E	85	0C	8A	53	41	56	45	2D	49	.....SAVE-I
2860	4D	41	47	C5	2F	28	FC	0E	55	0C	CC	1C	C1	0C	3C	11	MAG./(.U.....<.
2870	2C	08	00	08	89	0D	2C	08	00	01	56	1B	14	0D	4E	0E	.....V...N.
2880	7B	09	2C	08	E0	01	71	0D	DB	0E	4E	0E	66	08	08	71	(,....q...N.f..q
2890	0D	7B	09	2C	08	E7	01	71	0D	DB	0E	2C	08	00	08	7B	.(,....q.....(
28A0	09	2C	08	48	01	71	0D	C3	0E	66	08	0B	71	0D	66	08	..H.q...f..q.f.
28B0	10	46	1B	7B	09	2C	08	15	01	71	0D	DB	0E	D3	0C	2C	.F.(,....q.....
28C0	08	1A	01	71	0D	DB	0E	F6	1B	2A	1D	05	28	3C	11	2C	...q.....*((<.,
28D0	08	00	08	58	09	90	09	90	09	2C	08	00	08	89	0D	2C	...X.....
28E0	08	00	04	56	1B	9F	0F	71	0D	4B	0C	A1	20	2C	08	00	...V...q.K...)
28F0	04	21	09	E2	FF	85	0C	84	43	4F	50	D9	59	28	FC	0E	..!.....COP.Y(.

Address

Hexadecimal

ASCII

Address	Hexadecimal	ASCII
2900	3C 11 08 0E 55 0C A1 20 3C 11 33 0E 4B 0C A1 20	<...U...<.3.K...
2910	85 0C 87 42 4C 4B 43 4F 50 D9 F7 28 FC 0E C1 0C	...BLKCOP...(....
2920	F8 0D 89 0D 33 0E D3 0C F8 0D 71 0D 33 0E 58 09	....3.....q.3.X.
2930	90 09 4E 0E D4 23 F8 0D 90 09 71 0D 4E 0E D4 23	..N..#.....q.N..#
2940	7D 11 FE 28 F1 08 EA FF 2A 0E 85 0C 83 4C 4F CE	)..(.....*....LO.
2950	12 29 FC 0E 2C 08 00 C1 66 08 36 C3 0E 85 0C 84	.).....f.6.....
2960	4C 4F 46 C6 4C 29 FC 0E 2C 08 F0 FD 66 08 36 C3	LOF.L).....f.6.
2970	0E 85 0C 84 46 4F 52 CD 5F 29 FC 0E 66 08 36 9F	....FOR_)..f.6.
2980	0E 52 29 66 08 0C 6B 1F 66 08 36 C3 0E 85 0C 86	.R)f..k.f.6.....
2990	4C 49 53 54 45 D2 73 29 FC 0E 14 0D 33 0E 52 29	LISTE.s)....3.R)
29A0	58 09 90 09 FC 23 90 09 14 0D FC 23 7A 29 B3 1F	X....#.....#z)..
29B0	D0 08 04 00 A6 0C 8F 0F 21 09 E8 FF 66 29 85 0C	.....!...f)..
29C0	88 56 41 52 49 41 42 4C C5 8F 29 FC 0E 4B 0C 51	.VARIABLE...)..K.Q
29D0	0F 85 0C 85 41 52 52 41 D9 C0 29 FC 0E CB 29 2C	....ARRA...)...;
29E0	08 FE FF 4C 11 85 0C 83 43 2F CC D3 29 57 0F 28	...L....C/(...)W.(
29F0	00 85 56 4C 49 53 D4 E7 29 FC 0E 66 08 80 9D 10	..VLIS...)..f....
2A00	C3 0E C2 10 9F 0E 9F 0E 4E 0E 19 14 66 08 1F FD	.....N...f....
2A10	0B 4E 0E 9D 10 9F 0E 71 0D ED 29 9F 0E 37 0D C3	.N.....q...)..7..
2A20	11 E5 0C D0 08 0A 00 4B 0C 9D 10 C3 0E 8B 1F 2C	.....K.....
2A30	14 7D 11 97 12 6E 12 9F 0E 4E 0E E5 0C B3 1F 12	.J...n...N.....
2A40	0C D0 08 C5 FF 2A 0E 85 0C 86 4E 45 47 41 54 C5	.....*....NEGAT.
2A50	F1 29 FC 0E C8 0D 85 0C 87 44 4E 45 47 41 54 C5	.).....DNEGAT.
2A60	49 2A FC 0E E1 0D 85 0C 83 4E 4F D0 58 2A FC 0E	I*.....NO.X*..
2A70	85 0C C9 41 53 53 45 4D 42 4C 45 D2 68 2A 5A 19	...ASSEMBLE.h*Z.
2A80	81 A0 08 30 73 19 82 58 B0 6F 19 36 0F 8E 00 82	...Os...X.o.6.....
2A90	58 B1 86 2A 36 0F 90 00 82 58 B2 8F 2A 36 0F 92	X..*6....X..*6..
2AA0	00 82 58 B3 98 2A 36 0F 94 00 85 58 53 41 56 C5	..X..*6....XSAV.
2AB0	A1 2A 36 0F 98 00 87 41 2E 50 4C 41 43 C5 AA 2A	.*6....A.PLAC.*
2AC0	57 0F 0F 5F 86 41 2E 4D 4F 44 C5 B6 2A 57 0F 00	W...A.MOD..*W..
2AD0	00 84 42 55 4D D0 C4 2A FC 0E 3C 11 C0 2A C3 0E	..BUM..*..(<.*..
2AE0	4B 0C 69 11 85 0C 83 54 41 C4 D1 2A FC 0E D8 2A	K.i....TA..*...*
2AF0	4E 0E 2C 08 00 01 A2 11 D0 08 08 00 69 11 B1 08	N.,.....i....
2B00	0A 00 58 11 97 0F CD 2A 6F 0E 85 0C 88 3F 54 4F	..X....*o....?TO
2B10	4F 2D 42 49 C7 E6 2A FC 0E F8 0D 33 0E A2 11 E5	O-BI..*....3....
2B20	0C A9 27 07 54 4F 4F 20 42 49 47 85 0C 83 54 4C	..TOO BIG...TL
2B30	CE 0C 2B FC 0E D8 2A 2C 08 00 01 17 2B 69 11 85	..+...*,.....+i..
2B40	0C 85 41 2E 4F 50 D3 2D 2B 57 0F 04 14 FE 0C 1C	..A.OP.-+W.....
2B50	18 00 10 08 FF 00 10 FF 08 18 FF FF FF FF 04 00	.....
2B60	FF FF 08 FF FF FF FF FF FF 04 FF FF 0C FF FF FF	.....
2B70	FF 00 FF 00 10 FF 08 18 FF FF FF FF FF 04 FF 14	.....
2B80	0C FF 1C FF FF 00 FF 04 14 FF 0C 1C FF FF FF 00	.....
2B90	FF 04 14 FE 0C 1C 18 00 10 FF FF 00 FF 10 08 FF	.....
2BA0	FF FF FF FF FF 00 10 FF 08 FF FF FF FF FF 82	.....
2BB0	2C D8 41 2B FC 0E 55 0C CD 2A C3 0E EC 2A 85 0C	..A+..U..*...*
2BC0	82 2C D9 AF 2B FC 0E 8F 0F CD 2A C3 0E EC 2A 85	....+.....*...*
2BD0	0C 82 58 A9 C0 2B FC 0E 66 08 06 CD 2A C3 0E 33	..X..+..f...*..3
2BE0	2B 85 0C 82 29 D9 D1 2B FC 0E 66 08 07 CD 2A C3	+...).+..f...*
2BF0	0E 33 2B 85 0C 82 23 C2 E3 2B FC 0E 66 08 08 CD	.3+...#...+..f...

Address

Hexadecimal

ASCII

Address	Hexadecimal	ASCII
2C00	2A C3 0E 33 2B 85 0C 82 2E C1 F5 2B FC 0E 66 08	*..3+.....+.f.
2C10	09 CD 2A C3 0E D8 2A 85 0C 84 4A 4D 50 AC 07 2C	..*...*...JMP...
2C20	FC 0E 66 08 4C 69 11 58 11 85 0C 85 29 4A 4D 50	..f.Li.X....)JMP
2C30	AC 19 2C FC 0E 66 08 6C 69 11 58 11 85 0C 84 4A	.....f.li.X....J
2C40	53 52 AC 2B 2C FC 0E 66 08 20 69 11 58 11 85 0C	SR.,...f. i.X...
2C50	83 53 50 A9 3E 2C FC 0E 2C 08 00 01 17 2B B4 2B	.SP.),.....+.+
2C60	85 0C 83 52 50 A9 50 2C FC 0E 2C 08 00 01 17 2B	...RP.P,.....+
2C70	2C 08 01 01 71 0D B4 2B 85 0C 82 4F D0 62 2C FC	....q...+.O.b,..
2C80	0E D7 13 69 11 69 11 BF 13 4C DF 13 CD 2A 9F 0E	...i.i...L...*
2C90	E5 0C D0 08 06 00 33 0E EC 2A 4E 0E 14 0D B4 0E	.....3...*N.....
2CA0	CD 2A 9F 0E 71 0D 49 2B 71 0D B4 0E 4E 0E 66 08	..*..q.l+q...N.f.
2CB0	FF E6 11 A9 27 07 49 4C 4C 45 47 41 4C 4E 0E 66	.....'ILLEGALN.f
2CC0	08 FE E6 11 D0 08 0B 00 4B 0C 69 11 2A 0E 66 08	.....K.i.*.f.
2CD0	18 33 0E B4 0E 71 0D C0 2A 9F 0E DB 0E CD 2A 4B	.3...q...*.....*K
2CE0	0C 33 0E C3 0E 85 0C 84 41 44 43 AC 7A 2C 89 2C	.3.....ADC.z,..
2CF0	61 00 84 41 4E 44 AC E7 2C 89 2C 21 00 84 43 4D	a..AND.....!..CM
2D00	50 AC F2 2C 89 2C C1 00 84 45 4F 52 AC FD 2C 89	P.....EOR.....
2D10	2C 41 00 84 4C 44 41 AC 08 2D 89 2C A1 00 84 53	,A..LDA...-.....S
2D20	42 43 AC 13 2D 89 2C E1 00 84 4F 52 41 AC 1E 2D	BC...-.....ORA...-
2D30	89 2C 01 00 84 41 53 4C AC 29 2D 89 2C 06 0A 84	....ASL.)-.....
2D40	4C 53 52 AC 34 2D 89 2C 46 0A 84 52 4F 4C AC 3F	LSR.4-..F..ROL.?
2D50	2D 89 2C 26 0A 84 52 4F 52 AC 4A 2D 89 2C 66 0A	-.,&..ROR.J-..,f.
2D60	84 42 49 54 AC 55 2D 89 2C 24 14 84 43 50 58 AC	.BIT.U-..\$.CPX.
2D70	60 2D 89 2C E0 1E 84 43 50 59 AC 6B 2D 89 2C C0	`-.....CPY.k-...
2D80	1E 84 44 45 43 AC 76 2D 89 2C C6 28 84 49 4E 43	..DEC.v-...(.INC
2D90	AC 81 2D 89 2C E6 28 84 4C 44 58 AC 8C 2D 89 2C	...-...(.LDX...-..
2DA0	A2 32 84 4C 44 59 AC 97 2D 89 2C A0 3C 84 53 54	.2.LDY...-...(.ST
2DB0	41 AC A2 2D 89 2C 81 46 84 53 54 58 AC AD 2D 89	A...-...F.STX...-
2DC0	2C 86 50 84 53 54 59 AC B8 2D 89 2C 84 5A 83 55	,.P.STY...-...Z.U
2DD0	4E C9 C3 2D FC 0E D7 13 69 11 BF 13 4C DF 13 B4	N...-...i...L...
2DE0	0E 69 11 85 0C 84 42 52 4B AC CE 2D DC 2D 00 84	.i....BRK...-...-
2DF0	43 4C 43 AC E5 2D DC 2D 18 84 43 4C 44 AC EF 2D	CLC...-...CLD...-
2E00	DC 2D D8 84 43 4C 49 AC F9 2D DC 2D 58 84 43 4C	...-...CLI...-...X.CL
2E10	56 AC 03 2E DC 2D B8 84 44 45 58 AC 0D 2E DC 2D	V...-...DEX...-...
2E20	CA 84 44 45 59 AC 17 2E DC 2D 88 84 49 4E 58 AC	..DEY...-...INX.
2E30	21 2E DC 2D E8 84 49 4E 59 AC 2B 2E DC 2D C8 84	!...-...INY.+...-...
2E40	52 54 49 AC 35 2E DC 2D 40 84 52 54 53 AC 3F 2E	RTI.5...-@.RTS.?
2E50	DC 2D 60 84 53 45 43 AC 49 2E DC 2D 38 84 53 45	..-'.SEC.I...-8.SE
2E60	44 AC 53 2E DC 2D F8 84 53 45 49 AC 5D 2E DC 2D	D.S...-...SEI.J...-
2E70	78 84 54 41 58 AC 67 2E DC 2D AA 84 54 41 59 AC	x.TAX.g...-...TAY.
2E80	71 2E DC 2D A8 84 54 53 58 AC 7B 2E DC 2D BA 84	q...-...TSX.(...-...
2E90	4E 4F 50 AC 85 2E DC 2D EA 84 50 48 41 AC 8F 2E	NOP...-...PHA...
2EA0	DC 2D 48 84 50 48 50 AC 99 2E DC 2D 08 84 50 4C	..-H.PHP...-...PL
2EB0	41 AC A3 2E DC 2D 68 84 50 4C 50 AC AD 2E DC 2D	A...-...h.PLP...-...
2EC0	28 84 54 58 41 AC B7 2E DC 2D 8A 84 54 58 53 AC	(.TXA...-...TXS.
2ED0	C1 2E DC 2D 9A 84 54 59 41 AC CB 2E DC 2D 98 82	...-...TYA...-...
2EE0	4D C9 D5 2E 36 0F 10 00 82 50 CC DF 2E 36 0F 30	M...6...P...6.0
2EF0	00 82 56 D3 E8 2E 36 0F 50 00 82 56 43 A0 F1 2E	..V...6.P...VC...

Address

Hexadecimal

ASCII

Address	Hexadecimal	ASCII
2F00	36 0F 70 00 82 43 D3 FA 2E 36 0F 90 00 82 4E C3	6.p..C...6....N.
2F10	04 2F 36 0F B0 00 82 45 D1 0D 2F 36 0F D0 00 82	./6....E../6....
2F20	4E C5 16 2F 36 0F F0 00 86 42 45 47 49 4E AC 1F	N../6....BEGIN..
2F30	2F FC 0E 3C 11 85 0C 86 55 4E 54 49 4C AC 28 2F	/...<...UNTIL.(/
2F40	FC 0E 69 11 3C 11 14 0D 89 0D 69 11 85 0C 83 49	..i.<.....i....I
2F50	46 AC 37 2F FC 0E 69 11 3C 11 4B 0C 69 11 85 0C	F.7/..i.<.K.i...
2F60	85 54 48 45 4E AC 4E 2F FC 0E 3C 11 F8 0D 14 0D	.THEN.N/..<.....
2F70	89 0D 33 0E DB 0E 85 0C 85 45 4C 53 45 AC 60 2F	..3.....ELSE../
2F80	FC 0E 14 2E 66 08 50 58 11 3C 11 F8 0D 14 0D 89	....f.PX.<.....
2F90	0D 33 0E DB 0E 3C 11 37 0D 85 0C 87 52 45 50 45	.3...<.7....REPE
2FA0	41 54 AC 78 2F FC 0E 2C 08 B8 50 58 11 3C 11 14	AT.x/.....PX.<..
2FB0	0D 89 0D 69 11 3C 11 F8 0D 14 0D 89 0D 33 0E DB	...i.<.....3..
2FC0	0E 85 0C 86 41 47 41 49 4E AC 9B 2F FC 0E 14 2E	....AGAIN../.....
2FD0	F6 2E 40 2F 85 0C 86 45 4E 44 49 46 AC C3 2F FC	..@/...ENDIF../..
2FE0	0E 68 2F 85 0C 86 57 48 49 4C 45 AC D6 2F FC 0E	.h/...WHILE../..
2FF0	54 2F 33 0E 85 0C 85 4E 45 58 54 AC E5 2F FC 0E	T/3...NEXT../..
3000	2C 08 46 08 20 2C 85 0C 84 50 4F 50 AC F6 2F FC	,.F.,...POP../..
3010	0E 4B 0C 56 2C 1A 2D 4E 0E B4 2D 32 2E 4B 0C 56	.K.V,..-N...-2.K.V
3020	2C 1A 2D 14 0D B4 2D 32 2E 85 0C 84 43 4F 44 C5	,-...-2....COD.
3030	72 2A FC 0E 7E 2A B0 17 CD 2A 4B 0C 33 0E C3 0E	r*...~*...*K.3...
3040	84 13 85 0C 84 53 57 41 C2 2B 30 4D 30 B5 00 48	.....SWA.+OMO..H
3050	B5 01 95 00 68 95 01 4C 46 08 83 4B 45 D9 44 30	....h..LF..KE.DO
3060	62 30 A4 24 B1 28 48 29 3F 09 40 91 28 68 2C 00	b0.\$.(H)?@.(h,..
3070	C0 10 FB 91 28 AD 00 C0 29 7F 8D 10 C0 D0 02 A9	....(....)#.....
3080	5C C9 1D D0 02 A9 5B C9 1E D0 02 A9 5F CA CA 95	\.....[....._....
3090	00 A9 00 95 01 4C 46 08 86 2D 43 4D 4F 56 C5 5A	.....LF...-CMOV.Z
30A0	30 A3 30 18 B5 01 85 92 75 05 85 8F 18 B5 03 65	0.0.....u.....e
30B0	92 85 91 B5 04 85 8E B5 02 85 90 B5 00 F0 0F A8	.....
30C0	88 F0 07 B1 8E 91 90 88 D0 F9 E1 8E 91 90 A5 92	.....
30D0	F0 15 A0 FF C6 8F C6 91 B1 8E 91 90 88 D0 F9 B1	.....
30E0	8E 91 90 C6 92 D0 EB 18 8A 69 06 AA 4C 46 08 84	.....i..LF..
30F0	42 4F 4F D4 98 30 F8 30 4C 00 C6 C6 45 44 49 54	BOO..0.OL...EDIT
3100	4F D2 EF 30 5A 19 81 A0 13 35 84 2A 85 50 4F 53	O..OZ....5.*.POS
3110	49 D4 6F 19 16 31 B5 00 85 25 B5 02 85 24 E8 E8	I.o..1...%...\$..
3120	E8 E8 20 22 FC 4C 46 08 85 42 2F 53 43 D2 0C 31	..".LF..B/SC..1
3130	57 0F C0 03 86 53 43 52 45 45 CE 28 31 3F 31 B5	W....SCREE.(?1.
3140	00 85 8E E8 B5 00 85 8F E8 86 98 A9 00 85 90 48	.....H
3150	A9 04 85 91 A2 08 A0 00 B1 8E 49 80 91 90 C8 C0	.....I.....
3160	28 D0 F5 18 A5 90 69 80 85 90 90 02 E6 91 18 A5	(.....i.....
3170	8E 69 28 85 8E 90 02 E6 8F CA D0 DA 68 18 69 28	.i(.....h.i(
3180	C9 78 D0 C9 A6 98 4C 46 08 83 52 23 B0 34 31 57	.x....LF..R#.41W
3190	0F E2 97 83 52 23 CC 89 31 57 0F A2 9B 86 43 55	....R#...1W....CU
31A0	52 53 4F D2 93 31 FC 0E 4E 0E 8F 31 9F 0E 71 0D	RSO..1..N..1..q.
31B0	0E 11 C3 0E ED 29 9F 0E 46 1B 14 31 85 0C 84 48	.....).F..1..H
31C0	4F 4D C5 9D 31 FC 0E 4B 0C A6 31 85 0C 84 3C 46	OM..1..K..1...<F
31D0	53 BE BE 31 FC 0E 0E 11 9F 0E 14 0D 4E 0E 99 31	S..1.....N..1
31E0	9F 0E E6 11 D0 08 04 00 37 0D 8F 31 9F 0E 89 0D	.....7..1....
31F0	A6 31 85 0C 84 3C 42 53 BE CD 31 FC 0E 0E 11 9F	.1...<BS..1.....

Address

Hexadecimal

ASCII

Address	Hexadecimal	ASCII
3200	0E 37 0D 8F 31 9F 0E E9 1A 8F 31 9F 0E 89 0D A6	.7..1.....1.....
3210	31 85 0C 84 3C 55 50 BE F4 31 FC 0E 0E 11 9F 0E	1...<UP..1.....
3220	ED 29 9F 0E 89 0D 4E 0E 8F 31 9F 0E A2 11 D0 08	.)...N..1.....
3230	08 00 ED 29 9F 0E 71 0D 8F 31 9F 0E 89 0D A6 31	...)..q..1.....1
3240	85 0C 84 3C 4C 46 BE 13 32 FC 0E 0E 11 9F 0E ED	...<LF..2.....
3250	29 9F 0E 71 0D 4E 0E 99 31 9F 0E A2 11 E5 0C D0	)..q.N..1.....
3260	08 08 00 ED 29 9F 0E 89 0D 8F 31 9F 0E 89 0D A6	.....).....1.....
3270	31 85 0C 84 3C 43 52 BE 42 32 FC 0E 0E 11 9F 0E	1...<CR.B2.....
3280	8F 31 9F 0E 89 0D ED 29 9F 0E A7 1B 52 2A 0E 11	.1.....).....R*..
3290	6F 0E 49 32 85 0C 86 3C 45 4D 49 54 BE 73 32 FC	o.I2...<EMIT.s2..
32A0	0E 4E 0E 0E 11 9F 0E DB 0E 66 08 80 28 0C 66 08	.N.....f..(f..
32B0	28 9F 0E 66 08 24 B4 0E 71 0D DB 0E D4 31 85 0C	(..f..\$..q....1..
32C0	83 45 4F CC 96 32 FC 0E 0E 11 9F 0E 4E 0E 8F 31	.EO..2.....N..1
32D0	9F 0E 89 0D ED 29 9F 0E A7 1B 89 0D ED 29 9F 0E	.....).....)...
32E0	71 0D 85 0C 84 3C 49 43 BE C0 32 FC 0E 0E 11 9F	q....<IC..2.....
32F0	0E 4E 0E 14 0D C6 32 F8 0D 89 0D A1 30 0E 11 9F	.N....2.....0...
3300	0E DB 0E 8F 31 9F 0E 3D 31 85 0C 84 3C 44 43 BE	....1...=1...<DC.
3310	E4 32 FC 0E 0E 11 9F 0E 4E 0E 14 0D 33 0E C6 32	.2.....N...3..2
3320	F8 0D 89 0D E9 0A B1 0F C6 32 37 0D DB 0E 8F 31	.....27.....1
3330	9F 0E 3D 31 85 0C 84 3C 49 4C BE 0B 33 FC 0E C6	..=1...<IL..3...
3340	32 4E 0E ED 29 9F 0E 89 0D 4E 0E C1 0C 33 0E 99	2N..)....N...3..
3350	31 9F 0E F8 0D 89 0D A1 30 D3 0C ED 29 9F 0E B5	1.....0.....)...
3360	15 8F 31 9F 0E 3D 31 85 0C 84 3C 44 4C BE 36 33	..1...=1...<DL.63
3370	FC 0E C6 32 4E 0E ED 29 9F 0E 89 0D F8 0D 99 31	...2N..).....1
3380	9F 0E 33 0E 89 0D E9 0A 99 31 9F 0E ED 29 9F 0E	..3.....1.....)...
3390	89 0D ED 29 9F 0E B5 15 8F 31 9F 0E 3D 31 85 0C	...).....1...=1..
33A0	85 3C 53 41 56 BE 69 33 FC 0E F6 1B 2A 1D 85 0C	..<SAV.i3.....*...
33B0	85 3C 42 53 44 BE A0 33 FC 0E FB 31 B1 0F 9F 32	..<BSD..3...1...2
33C0	FB 31 85 0C 84 43 45 4F CC B0 33 FC 0E 0E 11 9F	.1...GEO..3.....
33D0	0E C6 32 F8 0D 89 0D B5 15 8F 31 9F 0E 3D 31 85	..2.....1...=1..
33E0	0C 85 3C 52 45 53 BE C4 33 FC 0E 8F 31 9F 0E A7	...<RES..3...1...
33F0	10 9F 0E 55 0C A1 20 8F 31 9F 0E 3D 31 85 0C 86	...U...1...=1...
3400	45 2E 4D 4F 44 C5 E1 33 57 0F 00 00 85 3C 49 4E	E.MOD..3W...<IN
3410	53 BE FF 33 FC 0E 08 34 55 0C 33 0E C3 0E 85 0C	S..3...4U.3.....
3420	86 3C 4E 49 4E 53 BE 0C 34 FC 0E 08 34 4B 0C 33	..<NINS..4...4K.3
3430	0E C3 0E 85 0C 84 3C 52 54 BE 20 34 FC 0E C6 32	.....<RT..4...2
3440	37 0D 4E 0E B4 0E 66 08 20 E6 11 E5 0C F8 0D 0E	7.N...f.....
3450	11 9F 0E E6 11 12 0C D0 08 E7 FF 14 0D 8F 31 9F	.....).....1..
3460	0E 89 0D A6 31 85 0C 86 45 2E 49 4E 49 D4 35 34	....1...E.INI.54
3470	FC 0E 4E 0E A7 10 C3 0E 29 34 CC 1C 4E 0E 8F 31	..N.....)4..N..1
3480	C3 0E 4E 0E 3D 31 30 31 9F 0E 71 0D 99 31 C3 0E	..N.=101...q..1..
3490	A7 10 9F 0E 4B 0C 2C 08 F8 07 18 11 C3 0E 7A 23	...K.,.....z#
34A0	24 23 75 09 4B 0C A6 31 85 0C 84 3C 4E 58 BE 67	*#u.K..1...<NX.g
34B0	34 FC 0E A7 10 9F 0E 14 0D 70 34 85 0C 84 3C 50	4.....p4...<P
34C0	52 BE AA 34 FC 0E A7 10 9F 0E 37 0D 70 34 85 0C	R..4.....7.p4..
34D0	85 3C 45 52 52 BE BD 34 FC 0E 24 11 9F 0E A7 10	..<ERR..4..\$.....
34E0	9F 0E CC 1C 89 0D 30 31 9F 0E D1 1A A6 31 85 0C	.....01.....1..
34F0	84 3C 43 4C BE D0 34 FC 0E 0E 11 9F 0E 8F 31 9F	..<CL..4.....1..

Address	Hexadecimal	ASCII
3500	0E DF 0F 71 0D F8 0D 89 0D B5 15 8F 31 9F 0E 3D	...q.....1..=
3510	31 85 0C 84 4B 45 59 D3 F0 34 57 0F 6E 2A FB 31	1...KEY..4W.n*.1
3520	3D 33 6E 2A 12 33 6E 2A 6E 2A 6E 2A B8 33 14 34	=3n*.3n*n*n*.3.4
3530	6E 2A 70 33 CB 33 7A 32 B1 34 E9 33 A8 33 C5 31	n*p3.3z2.4.3.3.1
3540	C4 34 D4 31 6E 2A 3C 34 F7 34 1A 32 D8 34 29 34	.4.1n*(4.4.2.4)4
3550	49 32 84 45 44 49 D4 FB 30 FC 0E 70 34 60 30 4E	12.EDI..0..p4`ON
3560	0E 66 08 1E E6 11 E5 0C D0 08 31 00 4E 0E 66 08	.f.....i.N.f.
3570	1C C3 11 D0 08 10 00 56 0D 1A 35 71 0D 9F 0E 8A	.....V..5q....
3580	08 B1 08 14 00 08 34 9F 0E D0 08 0A 00 EB 32 D4	.....4.....2.
3590	31 B1 08 04 00 9F 32 B1 08 C4 FF 2A 0E 2C 08 00	1.....2.....*.,..
35A0	04 2C 08 00 04 66 08 A0 10 0B 4B 0C 4B 0C 14 31	.....f.....K.K..1
35B0	85 0C 85 52 45 44 49 D4 52 35 FC 0E A7 10 9F 0E	...REDI.R5.....
35C0	59 35 85 0C 85 45 52 52 45 C4 E2 35 FC 0E 31 11	Y5...ERRE..5..1.
35D0	9F 0E 59 35 85 0C 83 52 41 CD C4 35 36 0F 00 68	..Y5...RA..56..h
35E0	83 45 4F D6 D6 35 36 0F 00 B7 86 57 49 4E 44 4F	.EO..56....WINDO
35F0	D7 E0 35 36 0F 00 68 83 42 4F D3 EA 35 36 0F 62	..56..h.BO..56.b
3600	68 83 45 4F D3 F7 35 36 0F 64 68 84 43 4C 49 CE	h.EO..56.dh.CLI.
3610	01 36 36 0F 66 68 84 4F 4C 49 CE 0B 36 36 0F 67	.66.fh.OLI..66.g
3620	68 83 42 4F D4 16 36 36 0F 68 68 84 42 45 4F D4	h.BO..66.hh.BEO.
3630	21 36 36 0F 6A 68 83 45 4F D4 2B 36 36 0F 6C 68	!66.jh.EO.+66.lh
3640	87 57 52 41 50 41 44 D2 36 36 36 0F 6E 68 85 50	.WRAPAD.666.nh.P
3650	46 4C 41 C7 40 36 36 0F 70 68 83 50 43 D4 4E 36	FLA.@66.ph.PC.N6
3660	36 0F 71 68 83 4C 43 D4 5A 36 36 0F 73 68 84 4C	6.qh.LC.Z66.sh.L
3670	4D 41 D8 64 36 36 0F 75 68 84 44 45 4F D3 6E 36	MA.d66.uh.DEO.n6
3680	36 0F 76 68 84 44 42 4F D3 79 36 36 0F 78 68 86	6.vh.DBO.y66.xh.
3690	50 46 4F 52 4D D4 84 36 36 0F 7A 68 84 43 55 52	PFORM..66.zh.CUR
36A0	D2 8F 36 36 0F 80 68 84 50 41 54 D4 9C 36 36 0F	..66..h.PAT..66.
36B0	D1 68 84 56 45 43 D4 A7 36 36 0F 20 69 83 2E 4C	.h.VEC..66. i..L
36C0	C6 B2 36 36 0F 22 69 86 57 52 41 50 43 D4 BD 36	..66."i.WRAPC..6
36D0	36 0F 23 69 83 2E 42 CC C7 36 36 0F 24 69 83 2E	6.*i..B..66.*i..
36E0	4C D0 D4 36 36 0F 25 69 83 51 49 CE DE 36 36 0F	L..66.%i.QI..66.
36F0	40 69 84 51 4F 55 D4 E8 36 36 0F 41 69 83 50 47	@i.QOU..66.Ai.PG
3700	D3 F2 36 36 0F 42 69 85 4C 49 4E 45 D3 FD 36 36	..66.Bi.LINE..66
3710	0F 43 69 83 42 4F D7 07 37 36 0F 45 69 84 4C 43	.Ci.BO..76.Ei.LC
3720	54 D2 13 37 36 0F 47 69 86 4C 52 46 4C 41 C7 1D	T..76.Gi.LRFLA..
3730	37 36 0F 49 69 84 4C 52 41 D9 28 37 36 0F 4B 69	76.Ii.LRA.(76.Ki
3740	85 45 46 4C 41 C7 35 37 36 0F 51 69 86 46 4E 44	.EFLA.576.Oi.FND
3750	4C 49 CE 40 37 36 0F 52 69 86 46 4E 44 50 4F D3	LI.@76.Ri.FNDPO.
3760	4C 37 36 0F 53 69 85 58 46 4C 41 C7 59 37 36 0F	L76.Si.XFLA.Y76.
3770	55 69 86 4E 55 46 4C 41 C7 66 37 36 0F 56 69 85	Ui.NUFLA.f76.Vi.
3780	4F 4C 44 45 A3 72 37 36 0F 58 69 83 42 4F C3 7F	OLDE.r76.Xi.BO.■
3790	37 36 0F 5A 69 83 45 4F C3 8B 37 36 0F 5C 69 83	76.Zi.EO..76.Vi.
37A0	4C 54 A3 95 37 36 0F 68 69 83 52 54 A3 9F 37 36	LT..76.hi.RT..76
37B0	0F 6A 69 85 4C 44 45 4F D3 A9 37 36 0F 6C 69 85	.ji.LDEO..76.li.
37C0	52 44 45 4F D3 B3 37 36 0F 6E 69 85 4F 4C 44 42	RDEO..76.ni.OLDB
37D0	A3 BF 37 36 0F 70 69 82 45 A3 CB 37 36 0F 74 69	..76.pi.E..76.ti
37E0	82 42 A3 D7 37 36 0F 76 69 84 42 59 54 C5 E0 37	.B..76.vi.BYT..7
37F0	36 0F 78 69 82 43 D4 E9 37 36 0F 7A 69 84 52 45	6.xi.C..76.zi.RE



Address

Hexadecimal

ASCII

Address	Hexadecimal	ASCII
3800	54 CE F4 37 36 0F 7C 69 87 52 45 54 4E 43 48 D2	T..76.:i.RETNCH.
3810	FD 37 36 0F 7D 69 84 43 4F 4C A3 08 38 36 0F 7E	.76.)i.COL..86..
3820	69 87 50 52 49 4E 54 45 D2 16 38 36 0F 7F 69 84	i.PRINTE..86..i.
3830	4F 45 4F D3 21 38 36 0F 81 69 84 58 50 4F D3 2F	OEO.!86..i.XPO./
3840	38 36 0F 83 69 84 59 50 4F D3 3A 38 36 0F 84 69	86..i.YPO.:86..i
3850	85 58 42 41 4E CB 45 38 36 0F 85 69 88 53 41 56	.XBAN.E86..i.SAV
3860	45 43 48 41 D2 50 38 36 0F 86 69 83 42 4C B0 5C	ECHA.P86..i.BL.\
3870	38 36 0F 87 69 83 42 4C B1 6B 38 36 0F 89 69 83	86..i.BL.k86..i.
3880	43 54 D2 75 38 36 0F 8B 69 84 4B 51 55 C5 7F 38	CT.u86..i.KQU.#8
3890	36 0F F0 69 85 50 41 47 45 D3 89 38 36 0F 00 6A	6..i.PAGE..86..j
38A0	85 53 41 56 45 C4 94 38 36 0F 00 6B 85 4C 4F 4D	.SAVE..86..k.LOM
38B0	45 CD A0 38 36 0F 00 6E 83 42 4F D6 AC 38 36 0F	E..86..n.BO..86..
38C0	00 72 87 44 45 46 41 55 4C D4 B8 38 57 0F 4C 3C	.r.DEFAUL..8W.L<
38D0	D4 4C 3A DB 00 00 FF 6C 4C 99 E1 02 00 6B 20 00	.L:....lL....k .
38E0	E0 04 00 B7 7F 00 E0 14 00 00 FF FF 00 10 00 28	....#.....(
38F0	00 18 00 17 00 F8 D0 07 D0 07 F8 06 00 FE FF 00	.....
3900	FF AA 0F 28 F0 FD 1B FD 00 00 3C 00 FF 00 00 00	...(<.....(<.....
3910	42 70 00 70 DC D8 00 B7 00 00 FF FF 8E B3 69 FF	Bp.p.....i.
3920	55 00 00 FF 00 00 FF FF 00 00 FF FF 38 DE FF FF	U.....8...
3930	00 00 FF FF 00 01 6E 03 6E 18 6E 18 6E 00 72 FF	.....n.n.n.n.r.
3940	00 00 72 FF FF 00 FF FF 00 00 FF FF 00 08 00 FF FF	.r.....
3950	00 00 FF FF 00 FF FF 00 00 00 FF FF 00 03 4C FF	.....L.
3960	00 00 FF FF 00 00 FF 00 00 00 00 88 FF FF FF 69	.....i
3970	FF 00 00 D0 D1 01 00 00 00 00 00 09 00 03 6E E6	.....n.
3980	B8 D0 02 E6 B9 AD 05 02 C9 3A B0 0A C9 20 F0 EF	.....
3990	38 E9 30 38 E9 D0 60 80 4F C7 52 FF 00 00 FF FF	8,08...O.R....
39A0	00 00 FF FF 00 00 7F FF 00 00 FF FF 00 00 FF FF	.....#.....
39B0	00 00 FF FF 00 00 FF FF 00 00 FF FF 00 00 FF 01	.....
39C0	00 00 FF FF 00 DF 19 00 01 00 40 00 00 FF 00 00	.....@.....
39D0	00 CD C1 00 00 00 00 00 D0 D2 00 FF 00 00 00 D2	.....
39E0	CF 02 01 00 00 00 00 00 00 00 00 00 00 00 00	.....
39F0	82 49 D0 C2 38 36 0F 18 00 82 43 C8 F0 39 36 0F	.I..86....C..96..
3A00	24 00 84 41 53 41 D6 F9 39 36 0F FB 00 84 50 53	\$.ASA..96....PS
3A10	41 D6 02 3A 36 0F FC 00 84 58 53 41 D6 0D 3A 36	A...:6....XSA...:6
3A20	0F FD 00 84 59 53 41 D6 18 3A 36 0F FE 00 84 53	....YSA...:6....S
3A30	53 41 D6 23 3A 36 0F FF 00 83 46 3E C2 2E 3A 41	SA.#:6....F)...A
3A40	3A 86 62 84 63 BA 86 64 A2 00 B5 00 9D 00 6C BD	:.b.c..d.....l.
3A50	00 6B 95 00 E8 D0 F3 A2 C0 BD 00 01 9D 80 6C ED	.k.....l.
3A60	40 6C 9D 00 01 E8 D0 F1 A6 FF 9A AD 7C 69 10 07	@l.....!i..
3A70	A2 FF A0 01 4C 44 D4 A9 FF 8D 7C 69 A6 FD A4 FE	....LD....!i....
3A80	A5 FC 48 A5 FB 28 60 83 42 3E C6 39 3A 8F 3A 08	..H..('B).9:...
3A90	85 FB 68 85 FC 86 FD 84 FE BA 86 FF A2 00 B5 00	..h.....
3AA0	9D 00 6B BD 00 6C 95 00 E8 D0 F3 A2 C0 BD 00 01	..k..l.....
3AB0	9D 40 6C BD 80 6C 9D 00 01 E8 D0 F1 A6 64 9A A4	..@l..l.....d..
3AC0	63 A6 62 4C 46 08 84 43 48 3E C6 87 3A CF 3A 29	c.bLF..CH)...:)
3AD0	7F 8D 7D 69 38 A5 24 ED 7E 69 8D 7C 69 AD 7D 69	#.ji8.\$..i.!i.ji
3AE0	C9 0D D0 0A A9 00 85 24 8D 7E 69 B8 50 07 E6 24	.....\$.i.P..\$
3AF0	A5 24 8D 7E 69 AD 7D 69 4C 8F 3A 8A 49 4E 49 54	..\$.i.jiL...:INIT

Address

Hexadecimal

ASCII

Address	Hexadecimal	ASCII
3B00	2D 42 41 53 49 C3 C6 3A FC 0E CC 38 A8 38 2C 08	-BASI.....8.8,..
3B10	00 01 E9 0A CC 38 2C 08 00 01 71 0D B4 38 66 08	.....8,....q...8f.
3B20	50 E9 0A 85 0C 87 44 49 53 50 4C 41 D9 FB 3A 57	P.....DISPLA...W
3B30	0F 00 04 80 04 00 05 80 05 00 06 80 06 00 07 80	.....
3B40	07 28 04 A8 04 28 05 A8 05 28 06 A8 06 28 07 A8	.(...)(...)(...)(...
3B50	07 50 04 D0 04 50 05 D0 05 50 06 D0 06 50 07 D0	.P...P...P...P...
3B60	07 86 4F 4E 2F 4F 46 C6 25 3B 6C 3B AD 84 69 C9	..ON/OF.%;1;..i.
3B70	18 90 07 A9 28 8D 83 69 A9 17 0A A8 B9 31 3B 85	....(..i.....1;.
3B80	8E B9 32 3B 85 8F AD 19 C0 30 FB AC 83 69 AD 85	..2;.....0...i..
3B90	69 D0 09 8D 01 C0 8D 55 C0 B8 50 06 8D 00 C0 8D	i.....U..P.....
3BA0	54 C0 60 82 4F CE 61 3B AA 3B 20 6C 3B B1 8E 8D	T.\.O.a;.; 1;..
3BB0	86 69 A9 FF 91 8E 8D 00 C0 8D 54 C0 4C 46 08 83	.i.....T.LF..
3BC0	4F 46 C6 A3 3B C7 3B 20 6C 3B AD 86 69 91 8E 8D	OF.;;; 1;..i...
3BD0	00 C0 8D 54 C0 4C 46 08 86 3F 42 4C 49 4E CB BF	...T.LF.?BLIN..
3BE0	3B FC 0E A8 0F 85 38 6F 0E 85 38 9F 0E D0 08 16	;.....8o..8.....
3BF0	00 85 38 9F 0E 7B 38 9F 0E E6 11 D0 08 04 00 C5	..8..(8.....
3C00	3B B1 08 0C 00 A8 3B 71 38 9F 0E 85 38 C3 0E 85	;.....;q8...8...
3C10	0C 84 3C 43 52 BE D8 3B FC 0E 66 08 0D 6B 1F 85	..<CR.;..f..k..
3C20	0C 84 55 4D 41 D8 11 3C FC 0E B0 25 A2 11 D0 08	..UMA..<...%....
3C30	04 00 33 0E 2A 0E 85 0C 84 55 4D 49 CE 21 3C FC	..3.*....UMI!<.
3C40	0E B0 25 A2 11 D0 08 08 00 2A 0E B1 08 06 00 33	..%.....*.....3
3C50	0E 2A 0E 85 0C 84 42 45 45 D0 38 3C FC 0E 2C 08	.*....BEE.8<...;
3C60	AA 01 4E 0C 58 09 55 0C 55 0C A4 0B 2C 08 30 C0	..K.X.U.U.....0.
3C70	DB 0E F1 08 F2 FF 85 0C 84 45 58 49 D4 55 3C FC	.....EXI.U<.
3C80	0E D3 0C 2A 0E 85 0C 84 58 4C 41 D4 78 3C 57 0F	...*....XLA.x<W.
3C90	01 04 02 00 00 00 00 00 00 00 0B 00 00 00 0D 00 00	.....
3CA0	08 00 05 00 00 00 00 00 00 07 00 0C 06 03 00 00	.....
3CB0	85 3C 51 55 45 BE 87 3C BA 3C C9 FF 69 00 29 7F	.(QUE..<.(..i.)#
3CC0	C9 20 B0 04 A8 B9 90 3C AC 40 69 99 F0 69 88 10	.....<.@i..i..
3CD0	02 A0 04 8C 40 69 8D 10 C0 60 83 51 55 C5 B0 3C	....@i.....QU.<
3CE0	E2 3C AD 00 C0 10 03 20 BA 3C 4C 46 08 83 3C 51	.(.....<LF..<Q
3CF0	BE DA 3C F5 3C AD 00 C0 10 07 C9 83 F0 03 20 BA	..<.<.....
3D00	3C CA CA A9 00 95 01 95 00 AC 41 69 CC 40 69 60	<.....Ai.@i\
3D10	82 40 CB ED 3C 17 3D CA CA AC 41 69 B9 F0 69 88	..@.<.=...Ai..i.
3D20	10 02 A0 04 8C 41 69 95 00 A9 00 95 01 4C 46 08	.....Ai.....LF.
3D30	84 3F 41 53 C3 10 3D 39 3D 20 F5 3C F0 11 B9 F0	..?AS...=9= .<....
3D40	69 C9 0B 90 04 A0 01 94 00 C9 01 D0 02 95 00 4C	i.....L
3D50	46 08 82 3F CB 30 3D 59 3D 20 F5 3C F0 04 A9 01	F..?.0=Y= .<....
3D60	95 00 4C 46 08 84 3F 44 55 D0 52 3D FC 0E 5F 0E	..LF..?DU.R=...
3D70	85 0C 84 4E 4F 4F D0 65 3D FC 0E 85 0C 82 58 B4	...N00.e=.....X.
3D80	72 3D 36 0F 96 00 82 58 B5 7D 3D 36 0F 9A 00 85	r=6....X.}=6.....
3D90	59 53 41 56 C5 86 3D 36 0F 9C 00 84 53 49 5A C5	YSAV...=6....SIZ.
3DA0	8F 3D 36 0F 50 00 87 52 45 56 45 52 53 C5 9B 3D	..=6.P...REVERS..=
3DB0	B2 3D B5 00 85 8E B5 01 85 8F B5 02 85 90 B5 03	..=.....
3DC0	85 91 E8 E8 E8 E8 86 98 A2 00 A5 8F C9 02 90 52	.....R
3DD0	C6 8F 18 A5 90 65 8E 85 92 A5 91 65 8F 85 93 C6	.....e.....e.....
3DE0	8F A0 FF B1 90 85 94 A1 92 91 90 A5 94 81 92 88	.....
3DF0	E6 92 D0 EF E6 93 C0 FF F0 23 C0 00 F0 11 B1 90	.....*

Address

Hexadecimal

ASCII

Address	Hexadecimal	ASCII
3E00	85 94 A1 92 91 90 A5 94 81 92 E6 92 88 D0 EF B1	.....
3E10	90 85 94 A1 92 91 90 91 90 A5 94 81 92 E6 91 B8	.....
3E20	50 A8 A5 8E 4A 18 A4 8F F0 02 69 80 A8 65 90 85	P...J...i..e..
3E30	92 A9 00 65 91 85 93 46 8E 90 06 E6 92 D0 02 E6	...e...F.....
3E40	93 88 C0 FF F0 15 B1 90 85 94 A1 92 91 90 A5 94	.....
3E50	81 92 E6 92 D0 02 E6 93 B8 50 E6 A6 98 4C 46 08	.....P...LF.
3E60	84 46 4C 49 D0 A6 3D FC 0E 08 0E C1 0C B0 25 71	.FLI...=.....%q
3E70	0D 90 09 33 0E B0 3D 90 09 F8 0D B0 3D D3 0C 71	...3...=.....=...q
3E80	0D 33 0E B0 3D 85 0C 89 46 4C 49 50 2F 54 52 49	.3...=...FLIP/TRI
3E90	CD 60 3E EC 0E B0 25 33 0E C1 0C C1 0C 71 0D 71	..)\...%3.....q.q
3EA0	0D F8 0D C1 0C B0 3D D3 0C 4E 0E 90 09 B0 3D D3	.....=..N.....=.
3EB0	0C 71 0D D3 0C B0 3D 85 0C 83 43 4C D2 87 3E C1	.q.....=...CL...)
3EC0	3E 86 98 A2 2E BD 31 3B 85 8E BD 32 3B 85 8F A0	).....1;...2;...
3ED0	27 A9 A0 8D 01 C0 8D 55 C0 91 8E 88 10 FB 8D 00	'.....U.....
3EE0	C0 8D 54 C0 A0 27 91 8E 88 10 FB CA CA 10 D6 A6	..T...'
3EF0	98 4C 46 08 85 4D 41 54 43 C8 B9 3E FE 3E 84 94	.LF..MATC...>)>..
3F00	98 18 6D D1 68 A8 AE D1 68 88 CA 30 2B BD D2 68	..m.h...h...0+.h
3F10	C9 61 90 1A C9 7B 90 0A D1 8E F0 03 A4 94 60 B8	.a...{.....}
3F20	50 09 51 8E 29 DF F0 03 A4 94 60 B8 50 07 D1 8E	P.Q.).....\P...
3F30	F0 03 A4 94 60 B8 50 D1 68 68 A6 98 18 A5 94 65	.....\P.hh.....e
3F40	8E 95 00 A9 00 65 8F 95 01 4C 46 08 85 53 45 45	.....e...LF..SEE
3F50	4B BE F4 3E 56 3F 38 B5 02 85 8E F5 00 85 9A B5	K...>V?8.....
3F60	03 85 8F F5 01 85 9B E8 E8 A9 00 95 00 95 01 90	.....
3F70	03 4C 46 08 86 98 38 A9 00 E5 9A 85 9A A9 00 E5	.LF...8.....
3F80	9B 85 9B AD D2 68 29 DF 85 90 AD D3 68 29 DF 85	.....h)...h)..
3F90	92 A5 9A C9 90 A5 9B E9 00 90 60 AC D1 68 88 D0	.....\h..
3FA0	11 B1 8E 29 DF C5 90 D0 03 20 FE 3E C8 10 F2 B8	.....).....>.....
3FB0	50 30 A0 01 B1 8E 29 DF C5 92 D0 11 88 B1 8E 29	PO.....).....)
3FC0	DF C5 90 D0 03 20 FE 3E C8 B1 8E 29 DF C8 C5 90	.....>.....>.....
3FD0	D0 0D B1 8E 29 DF C5 92 D0 05 88 20 FE 3E C8 C8	.....).....>.....
3FE0	10 D2 18 A5 8E 69 80 85 8E 90 02 E6 8F 38 A5 9A	.....i.....8..
3FF0	E9 80 85 9A B0 02 C6 9B B8 50 96 A0 00 B1 8E 29	.....P.....)
4000	DF C5 90 D0 03 20 FE 3E C8 C4 9A D0 F0 A6 98 4C	.....>.....L
4010	46 08 85 53 45 45 4B BC 4C 3F 1C 40 38 B5 00 85	F..SEEK.L?.@8...
4020	8E F5 02 85 9A B5 01 85 8F F5 03 85 9B E8 E8 A0	.....
4030	00 94 00 94 01 B0 03 4C 46 08 05 9A D0 03 4C 46	.....LF.....LF
4040	08 86 98 AD D2 68 29 DF 85 90 AD D3 68 29 DF 85	.....h)...h)..
4050	92 A5 9A C9 90 A5 9B E9 00 90 5D A5 8E E9 80 85	.....J.....
4060	8E B0 03 C6 8F 38 A5 9A E9 80 85 9A B0 02 C6 9B	.....8.....
4070	A0 7F AE D1 68 CA D0 11 B1 8E 29 DF C5 90 D0 03	.#..h.....)
4080	20 FE 3E 88 10 F2 B8 50 2C B1 8E 29 DF C5 90 D0	.....)....P.....)
4090	11 C8 B1 8E 29 DF 88 C5 92 D0 03 20 FE 3E B1 8E	.....).....>.....
40A0	29 DF 88 C5 92 D0 0B B1 8E 29 DF C5 90 D0 03 20	).....).....
40B0	FE 3E 88 10 D4 B8 50 99 A5 8E E5 9A 85 8E B0 02	.....)....P.....
40C0	C6 8F A4 9A B1 8E 29 DF C5 90 D0 03 20 FE 3E 88	.....).....>.....
40D0	D0 F2 A6 98 4C 46 08 84 57 52 41 D0 12 40 E0 40	.....LF..WRA...e@
40E0	A0 00 8C 70 68 AD 6E 68 85 8E AD 6F 68 85 8F CD	...ph.nh...oh...
40F0	6D 68 90 10 8C 23 69 A9 A0 A0 4F 99 80 68 88 10	mh...#i...O...h..

Address

Hexadecimal

ASCII

Address	Hexadecimal	ASCII
4100	FA 4C 46 08 B1 8E C9 0C D0 14 C8 8C 23 69 A9 BD	.LF.....#i..
4110	8C 70 68 AD 4F 99 80 68 88 10 FA 4C 46 08 AD 73	.ph.O..h...LF..s
4120	68 CD 75 68 90 14 8C 23 69 A9 AD C8 8C 70 68 A0	h.uh...#i....ph.
4130	4F 99 80 68 88 10 FA 4C 46 08 B1 8E 49 80 C9 8E	O..h...LF...I...
4140	B0 1C C9 8D D0 08 C8 8C 23 69 88 B8 50 03 8C 23	.....#i...P..#
4150	69 A9 A0 99 80 68 C8 C0 50 90 F8 4C 46 08 99 80	i....h..P..LF...
4160	68 C8 C0 51 D0 D4 A9 20 88 10 08 A9 50 8D 23 69	h..Q....P.#i
4170	4C 46 08 D1 8E F0 F1 88 10 08 A9 50 8D 23 69 4C	LF.....P.#iL
4180	46 08 D1 8E D0 F1 C8 8C 23 69 A9 A0 99 80 68 C8	F.....#i....h.
4190	C0 50 90 F8 4C 46 08 86 41 44 4A 55 53 D4 D7 40	.P..LF..ADJUS..@
41A0	A2 41 AD 6F 68 CD 6D 68 D0 03 4C 46 08 AC 23 69	.A.oh.mh..LF..#i
41B0	C0 50 F0 19 AD 6E 68 85 8E AD 6F 68 85 8F B1 8E	.P....nh...oh....
41C0	C9 0C D0 09 88 B1 8E C9 0E 90 01 C8 C8 84 8F AD	.....
41D0	78 68 85 90 AD 79 68 85 91 AD 76 68 85 92 AD 77	xh...yh...vh...w
41E0	68 85 93 38 AD 6E 68 ED 6A 68 AD 6F 68 ED 6B 68	h..8.nh..jh.oh.kh
41F0	B0 44 38 AD 78 68 ED 6A 68 85 94 AD 79 68 ED 6B	.D8.xh..jh...yh.k
4200	68 85 95 90 0F 18 A5 94 6D 64 68 85 90 A5 95 6D	h.....mdh....m
4210	65 68 85 91 38 AD 76 68 ED 6A 68 85 94 AD 77 68	eh..8.vh..jh...wh
4220	ED 6E 68 85 95 90 0F 18 A5 94 6D 64 68 85 92 A5	.kh.....mdh...
4230	95 6D 65 68 85 93 38 A5 90 ED 6E 68 A8 A5 91 ED	.meh..8...nh....
4240	6F 68 10 05 A0 00 E8 50 0D F0 03 4C 46 08 98 C5	oh.....P...LF...
4250	8F 90 03 4C 46 08 38 A5 92 ED 6E 68 85 8E A5 93	...LF.8...nh....
4260	ED 6F 68 F0 0A 10 03 4C 46 08 A9 50 E8 50 14 A5	.oh....LF..P.P..
4270	8F C5 8E 90 0C D0 05 A9 50 B8 50 02 A5 8E B8 50	.....P.P....P
4280	02 A9 50 85 8E C4 8E 90 03 4C 46 08 B9 80 68 49	..P.....LF...hI
4290	80 99 80 68 C8 C4 8E 90 F3 4C 46 08 87 3F 55 50	...h.....LF...?UP
42A0	44 41 54 C5 97 41 A8 42 B5 00 A0 01 94 00 0A 0A	DAT..A.B.....
42B0	A8 AD 6F 68 D9 01 68 D0 1F AD 6E 68 D9 00 68 D0	..oh..h...nh..h.
42C0	17 AD 73 68 D9 02 68 D0 0F AD 71 68 D9 03 68 D0	..sh..h...qh..h.
42D0	07 A9 00 95 00 4C 46 08 AD 6E 68 99 00 68 AD 6F	.....LF..nh..h.o
42E0	68 99 01 68 AD 73 68 99 02 68 AD 71 68 99 03 68	h..h.sh..h.qh..h
42F0	4C 46 08 87 45 4E 44 57 52 41 D0 9C 42 FF 42 AC	LF..ENDWRA..B.B.
4300	70 68 D0 06 EE 73 68 B8 50 0A 88 8C 73 68 8C 70	ph...sh.P...sh.p
4310	68 EE 71 68 18 AD 23 69 6D 6E 68 8D 6E 68 90 03	h.qh...#imnh.nh..
4320	EE 6F 68 38 ED 64 68 AD 6F 68 ED 65 68 CA CA 94	.oh8.dh.oh.eh...
4330	01 C8 90 01 88 94 00 AD 6F 68 CD 6D 68 D0 05 A9	.....oh.mh...
4340	00 8D 6E 68 4C 46 08 88 54 45 53 54 50 41 47 C5	..nhLF..TESTPAG.
4350	F3 42 54 43 AD 73 68 D0 2C AD 71 68 0A 0A A8 AD	.BTC.sh...qh....
4360	6F 68 99 01 6A AD 6E 68 99 00 6A AD 47 69 99 02	oh..j.nh..j.Gi..
4370	6A AD 48 69 99 03 6A A9 FF 99 04 6A 99 05 6A 99	j.Hi..j....j..j.
4380	06 6A 99 07 6A EE 66 68 EE 47 69 D0 03 EE 48 69	.j..j.fh.Gi...Hi
4390	4C 46 08 84 44 49 53 D0 47 43 9C 43 B5 00 0A A8	LF..DIS.GC.C....
43A0	E8 E8 86 98 B9 31 3B 85 8E B9 32 3B 85 8F A2 4E	.....i;...2;...N
43B0	A0 27 8D 01 C0 8D 55 C0 BD 80 68 CA CA 91 8E 88	.....U...h....
43C0	10 F6 AD 19 C0 30 FB 8D 00 C0 8D 54 C0 A2 4F A0	.....O.....T..O.
43D0	27 BD 80 68 CA CA 91 8E 88 10 F6 A6 98 4C 46 08	.....h.....LF.
43E0	86 3C 57 52 41 50 BE 93 43 EB 43 A0 00 8C 70 68	.(WRAP..C.C...ph
43F0	AD 6E 68 85 8E AD 6F 68 85 8F CD 6D 68 90 06 8C	.nh...oh...mh...

Address	Hexadecimal														ASCII		
4400	23	69	4C	46	08	B1	8E	C9	0C	D0	0A	C8	8C	23	69	8C	#iLF.....#i.
4410	70	68	4C	46	08	AD	73	68	CD	75	68	90	0A	8C	23	69	phLF..sh.uh...#i
4420	C8	8C	70	68	4C	46	08	B1	8E	C9	0E	B0	0B	C9	0D	D0	..phLF.....
4430	01	C8	8C	23	69	4C	46	08	C8	C0	51	D0	EA	A9	20	88	...#iLF...Q....
4440	10	08	A9	50	8D	23	69	4C	46	08	D1	8E	F0	F1	88	10	...P.#iLF.....
4450	08	A9	50	8D	23	69	4C	46	08	D1	8E	D0	F1	C8	8C	23	..P.#iLF.....#
4460	69	4C	46	08	86	53	43	52	4F	4C	CC	E0	43	6F	44	A0	iLF..SCROL..CoD.
4470	00	86	98	B9	04	68	99	00	68	C8	C0	60	D0	F5	A9	00	.....h..h.....
4480	8D	5E	68	8D	5F	68	AA	BD	31	3B	85	8E	E8	BD	31	3B	..h_h..1;...1;
4490	85	8F	E8	ED	31	3B	85	90	E8	BD	31	3B	85	91	A0	27	....1;...1;...'
44A0	8D	01	C0	8D	55	C0	B1	90	91	8E	88	10	F9	AD	19	C0	....U.....
44E0	30	FE	8D	00	C0	8D	54	C0	A0	27	B1	90	91	8E	88	10	0.....T.....
44C0	F9	CA	E0	2E	D0	C1	A6	98	4C	46	08	84	3F	45	4E	C4	.....LF..?EN.
44D0	64	44	FC	0E	12	36	E4	0E	66	08	18	E6	11	D0	08	34	dD...6..f.....4
44E0	00	07	36	9F	0E	F3	35	66	08	5C	71	0D	9F	0E	89	0D	..6...5f.\q.....
44F0	66	08	4F	1A	12	4A	36	9F	0E	32	36	9F	0E	E6	11	12	f.O..J6..26.....
4500	0C	D0	08	10	00	6D	44	A8	0F	12	36	6F	0E	55	0C	19	.....mD...6o.U..
4510	37	6F	0E	85	0C	86	28	46	50	4F	53	A9	CB	44	FC	0E	7o....(FPOS..D..
4520	66	08	18	4B	0C	58	09	4E	0E	F3	35	66	08	17	90	09	f..K.X.N..5f....
4530	89	0D	56	0D	56	0D	71	0D	9F	0E	A2	11	E5	0C	D0	08	..V.V.q.....
4540	3D	00	F3	35	66	08	17	90	09	89	0D	56	0D	56	0D	71	=..5f.....V.V.q
4550	0D	9F	0E	89	0D	66	08	80	F8	0D	A2	11	D0	08	0E	00	.....f.....
4560	07	36	9F	0E	71	0D	32	36	9F	0E	89	0D	66	08	17	90	.6..q.26...f...
4570	09	89	0D	D3	0C	2A	0E	D3	0C	2A	0E	85	0C	F1	08	A8	.....*...*.....
4580	FF	2A	0E	66	08	50	66	08	17	85	0C	84	46	50	4F	D3	..*..f..Pf.....FPO.
4590	15	45	FC	0E	4E	0E	B4	0E	66	08	0C	E6	11	F8	0D	4E	..E..N...f.....N
45A0	0E	32	36	9F	0E	E6	11	D0	08	08	00	2A	0E	07	36	9F	.26.....*..6.
45B0	0E	37	0D	E4	0E	66	08	0D	1A	12	FD	0B	D0	08	10	00	.7...f.....
45C0	37	0D	1E	45	33	0E	14	0D	33	0E	B1	08	04	00	1E	45	7..E3...3.....E
45D0	55	37	DB	0E	4E	0E	66	08	50	E6	11	D0	08	0C	00	2A	U7..N.f.P.....*
45E0	0E	4B	0C	55	0C	55	37	6F	0E	62	37	DB	0E	85	0C	86	..K.U.U7o.b7.....
45F0	46	4E	44	43	55	D2	8B	45	FC	0E	80	36	9F	0E	37	0D	FNDCU..E...6..7.
4600	1E	45	33	0E	14	0D	F8	0D	66	08	17	A2	11	F8	0D	66	..E3.....f.....f
4610	08	50	E6	11	FD	0B	80	36	9F	0E	37	0D	B4	0E	66	08	..P.....6..7...f.
4620	0E	A2	11	12	0C	D0	08	08	00	2A	0E	14	0D	4B	0C	66	.....*...K.f
4630	08	4F	F8	0D	A2	11	D0	08	18	00	66	08	17	4C	38	DB	..O.....f...L8.
4640	0E	66	08	28	41	38	DB	0E	2A	0E	2A	0E	B1	08	16	00	..f.(A8...*...*
4650	4E	0E	64	0D	41	38	DB	0E	55	0C	FD	0B	58	38	DB	0E	N.d.A8..U...X8..
4660	4C	38	DB	0E	71	38	9F	0E	85	38	C3	0E	A8	3B	85	0C	L8..q8...8...;
4670	86	53	45	54	2E	55	D0	EF	45	7B	46	AD	67	68	8D	66	..SET.U..E(F.gh.f
4680	68	C9	02	B0	08	A0	00	8C	66	68	B8	50	14	CE	66	68	h.....fh.P..fh
4690	0A	0A	A8	B9	02	68	D0	03	CE	66	68	AD	66	68	0A	0A	.....h...fh.fh..
46A0	A8	B9	00	68	8D	6E	68	B9	01	68	8D	6F	68	B9	02	68	...h.nh..h.oh..h
46B0	8D	73	68	B9	03	68	8D	71	68	18	AD	66	68	6D	45	69	..sh..h.qh..fhmEi
46C0	8D	47	69	A9	00	6D	46	69	8D	48	69	AD	64	68	85	8E	..Gi..mFi.Hi.dh..
46D0	AD	65	68	85	8F	AD	6A	68	85	90	AD	6B	68	85	91	A0	..eh...jh...kh...
46E0	51	B1	90	91	8E	88	10	F9	4C	46	08	83	42	4D	D0	70	Q.....LF..BM.p
46F0	46	F3	46	98	18	65	90	85	90	A5	91	69	00	85	91	38	F.F..e.....i...8

Address

Hexadecimal

ASCII

4700	A5 90 ED 64 68 A5 91 ED 65 68 B0 01 60 AD 6A 68	...dh...eh...`jh
4710	E5 90 AD 6B 68 E5 91 90 1E 38 A5 90 ED 64 68 85	...kh....8...dh.
4720	90 A5 91 ED 65 68 85 91 18 A5 90 6D 6A 68 85 90	...eh....mjh..
4730	A5 91 6D 6B 68 85 91 60 83 4C 2E C1 EB 46 40 47	..mkh...`L...F@G
4740	A9 0C A0 00 D1 90 D0 02 C8 60 A9 0E D1 90 90 08	.....`.....
4750	A9 0D D1 90 D0 01 C8 60 C8 C0 51 D0 EF A9 20 88	.....`Q....
4760	10 03 A0 50 60 D1 90 F0 F6 88 10 03 A0 50 60 D1	...P`.....P`.
4770	90 D0 F6 C8 60 87 4C 4F 43 2E 41 44 D2 38 47 81	.....`LOC.AD.8G.
4780	47 B5 00 85 8E B5 01 85 8F E8 E8 AD 42 69 0A 0A	G.....Bi..
4790	69 04 A8 88 88 88 88 38 A5 8E F9 00 6A A5 8F F9	i.....8....j...
47A0	01 6A 90 EF B9 00 6A 85 90 F9 01 6A 85 91 B9 02	.j....j....j....
47B0	6A 8D 4F 69 B9 03 6A 8D 50 69 98 4A 4A 8D 4E 69	j.Oi..j.Pi.JJ.Ni
47C0	A0 00 84 94 E6 94 20 40 47 A5 90 85 92 A5 91 85	.....@G.....
47D0	93 20 F3 46 38 A5 90 E5 8E 85 95 A5 91 E5 8F 90	...F8.....
47E0	E3 05 95 D0 0A A5 90 8D 4B 69 A5 91 E8 50 09 A5	.....Ki...P..
47F0	92 8D 4B 69 A5 93 C6 94 8D 4C 69 18 A5 94 8D 4D	..Ki.....Li....M
4800	69 6D 4F 69 8D 4F 69 A9 00 6D 50 69 8D 50 69 4C	imOi.Oi..mPi.PiL
4810	46 08 87 4C 4F 43 2E 4E 55 CD 75 47 1E 48 B5 00	F..LOC.NU.uG.H..
4820	85 8E B5 01 85 8F E8 E8 AD 42 69 0A 0A 69 04 A8	.....Bi..i..
4830	88 88 88 88 38 A5 8E F9 02 6A A5 8F F9 03 6A 90	...8....j....j.
4840	EF B9 00 6A 85 90 B9 01 6A 85 91 38 A5 8E F9 02	...j....j...8....
4850	6A 8D 4D 69 98 4A 4A 8D 4E 69 A0 FF 84 94 E6 94	j.Mi.JJ.Ni.....
4860	A5 94 CD 4D 69 F0 07 20 40 47 20 F3 46 18 90 EE	...Mi...@G.F...
4870	A5 90 8D 4B 69 A5 91 8D 4C 69 4C 46 08 82 3F C4	...Ki...LiLF...?.
4880	12 48 84 48 CA CA A0 00 94 01 94 00 AC 41 69 CC	.H.H.....Ai.
4890	40 69 F0 1B B9 F0 69 C9 01 D0 14 88 10 02 A0 04	@i....i.....
48A0	8C 41 69 A0 01 95 00 CE D1 68 10 03 EE D1 68 4C	.Ai.....h....hL
48B0	46 08 88 42 55 4D 50 57 52 41 D0 7D 48 BF 48 38	F..BUMPWRA.)H.H8
48C0	AD 6A 68 ED 64 68 85 8E AD 6B 68 ED 65 68 85 8F	.jh.dh...kh.eh..
48D0	18 AD 6E 68 65 8E 8D 6E 68 AD 6F 68 65 8F 8D 6F	..nhe..nh.che..o
48E0	68 CD 6D 68 D0 05 A9 00 8D 6E 68 4C 46 08 89 41	h.mh.....nhLF..A
48F0	46 54 45 52 2E 45 4F D3 B2 48 FC 48 AD 6E 68 8D	FTER.EO..H.H.nh.
4900	7A 68 AD 6F 68 8D 7B 68 AD 73 68 8D 7C 68 AD 71	zh.ch.(h.sh.`h.q
4910	68 8D 7D 68 AD 47 69 8D 7E 68 AD 48 69 8D 7F 68	h.)h.Gi.`h.Hi.#h
4920	AC 66 68 88 8C 67 68 CA CA A9 00 95 01 C0 17 F0	.fh..gh.....
4930	02 A9 01 95 00 4C 46 08 82 3F D8 EE 48 3F 49 CA	.....LF...?..H?I.
4940	CA A0 00 94 01 AD 61 C0 0D 62 C0 30 05 94 00 4C	.....a..b.O...L
4950	46 08 C8 94 00 AD 61 C0 2D 62 C0 10 0D AD 55 69	F.....a..-b....Ui
4960	C9 05 F0 03 EE 55 69 4C 46 08 AD 61 C0 30 02 A0	.....UiLF..a.O..
4970	03 8C 55 69 4C 46 08 87 53 45 54 4C 49 4E C5 38	..UiLF..SETLIN.8
4980	49 83 49 E5 00 E8 E8 0A 0A A8 B9 00 68 8D 6E 68	I.I.....h.nh
4990	B9 01 68 8D 6F 68 B9 02 68 8D 73 68 B9 03 68 8D	..h.ch..h.sh..h.
49A0	71 68 4C 46 08 82 3F C1 77 49 AC 49 CA CA A0 00	qhLF...?wI.I....
49B0	94 01 94 00 AC 41 69 CC 40 69 F0 13 B9 F0 69 C9	.....Ai.@i....i.
49C0	0B D0 0C 88 10 02 A0 04 8C 41 69 A0 01 94 00 4C	.....Ai....L
49D0	46 08 82 3F CE A5 49 D9 49 CA CA A9 00 95 01 95	F...?..I.I.....
49E0	00 AC 41 69 CC 40 69 F0 30 B9 F0 69 C9 0C 90 29	..Ai.@i.O..i...)
49F0	88 10 02 A0 04 8C 41 69 A0 01 94 00 AC 49 69 D0	.....Ai.....Ii.

Address

Hexadecimal

ASCII

Address	Hexadecimal	ASCII
4A00	0B AC D1 68 C0 1F F0 01 C8 BB 50 02 A0 01 8C D1	...h.....P.....
4A10	68 99 D1 68 A0 00 8C 49 69 4C 46 08 85 4C 45 4D	h..h...IiLF..LEM
4A20	49 D4 D2 49 26 4A B5 00 E8 E8 AC 21 69 84 37 AC	I..I&J.....!i.7.
4A30	20 69 84 36 A0 60 8C F0 FD 20 ED FD A4 37 8C 21	i.6.`.....7.!
4A40	69 A4 36 8C 20 69 A0 FD 84 37 A0 F0 84 36 A0 C9	i.6. i...7...6..
4A50	8C F0 FD 4C 46 08 83 53 45 CC 1C 4A 5E 4A 38 CA	...LF..SE..J*J8.
4A60	CA AD 64 68 ED 62 68 95 00 AD 65 68 ED 63 68 95	..dh.bh...eh.ch.
4A70	01 4C 46 08 85 4E 55 44 47 C5 56 4A FC 0E 9C 38	.LF..NUDG.VJ...8
4A80	2C 08 00 01 71 0D 9C 38 58 09 90 09 9F 0E 07 36	,...q...8X.....6
4A90	9F 0E 14 0D A2 11 D0 08 0C 00 4E 0E 90 09 6F 0E	.....N...o.
4AA0	B1 08 04 00 A6 0C 9F 0F 21 09 ED FF 36 38 9F 0E	.....!...68..
4AB0	32 36 9F 0E A2 11 D0 08 08 00 4E 0E 36 38 6F 0E	26.....N.68o.
4AC0	4E 0E F3 35 6F 0E 4E 0E FD 35 6F 0E 4E 0E 8B 36	N..5o.N..5o.N..6
4AD0	6F 0E 4E 0E 07 36 6F 0E 4E 0E 80 36 6F 0E 27 36	o.N..6o.N..6o.'6
4AE0	6F 0E 85 0C 87 52 45 41 4C 49 47 CE 74 4A FC 0E	o....REALIG.tJ..
4AF0	FD 35 9F 0E 7F 47 3C 37 9F 0E 4A 36 C3 0E 3C 37	.5..EG<7..J6...<7
4B00	9F 0F 71 0D 9F 0E 4E 0E 24 37 C3 0E E5 37 C3 0E	..q...N.\$7...7..
4B10	3C 37 24 0D B4 0E 6A 36 DB 0E 3C 37 97 0F 71 0D	<7\$...j6...<7..q.
4B20	B4 0E 60 36 DB 0E 32 36 9F 0E 07 36 9F 0E A2 3D	..'6..26...6...=
4B30	14 0D E9 0A E9 43 52 43 FD 42 E5 0C D0 08 F6 FF	.....CRC.B.....
4B40	BD 48 4A 36 9F 0E 3C 36 9F 0E A2 11 D0 08 0E 00	.HJ6...<6.....
4B50	E9 43 52 43 FD 42 2A 0E B1 08 E8 FF 24 37 9F 0E	.CRC.B*.....\$7..
4B60	0F 37 C3 0E 60 36 B4 0E 03 37 DB 0E 85 0C 84 4D	.7..'6...7.....M
4B70	58 38 B0 E4 4A FC 0E 4B 0C C3 36 DB 0E 66 08 10	X8..J..K..6..f..
4B80	DA 36 DB 0E 66 08 0F E4 36 DB 0E 4B 0C E4 36 14	.6..f...6..K..6.
4B90	0D DB 0E 85 0C 83 49 44 D3 6E 4B FC 0E 4B 0C C3	.....ID.nK..K..
4BA0	36 DB 0E 4B 0C DA 36 DB 0E 2C 08 1E 1B E4 36 C3	6..K..6.....6.
4BB0	0E 2C 08 4A 2C E4 36 24 0D C3 0E 2C 08 36 30 E4	...J..6\$.....60.
4BC0	36 66 08 04 71 0D C3 0E 2C 08 2C 24 E4 36 66 08	6f..q.....\$6f.
4BD0	06 71 0D C3 0E 2C 08 1B 52 E4 36 66 08 08 71 0D	.q.....R.6f..q.
4BE0	C3 0E 2C 08 2C 31 E4 36 66 08 0A 71 0D C3 0E 2C	.....1.6f..q....
4BF0	08 2C 24 E4 36 66 08 0C 71 0D C3 0E 4B 0C E4 36	..\$6f..q...K..6
4C00	66 08 0E 71 0D DB 0E 85 0C 84 46 58 38 B0 95 4B	f..q.....FX8..K
4C10	FC 0E 4B 0C C3 36 DB 0E 4B 0C DA 36 DB 0E 2C 08	..K..6..K..6....
4C20	1B 4D E4 36 C3 0E 2C 08 1B 6C E4 36 24 0D C3 0E	.M.6.....1.6\$...
4C30	66 08 08 E4 36 9F 0F 71 0D C3 0E 85 0C 85 51 41	f...6..q.....QA
4C40	4E 54 D8 09 4C FC 0E 55 0C C3 36 DB 0E 4B 0C DA	NT..L..U..6..K..
4C50	36 DB 0E 2C 08 1B 5B E4 36 C3 0E 2C 08 36 73 E4	6.....[.6.....6s.
4C60	36 24 0D C3 0E 2C 08 1B 5B E4 36 9F 0F 71 0D C3	6\$.....[.6..q..
4C70	0E 2C 08 32 77 E4 36 66 08 06 71 0D C3 0E 4B 0C	...2w.6f..q...K.
4C80	E4 36 66 08 08 71 0D DB 0E 85 0C 84 51 55 4D C5	.6f..q.....QUM.
4C90	3D 4C FC 0E 55 0C C3 36 DB 0E 66 08 0C DA 36 DB	=L..U..6..f...6.
4CA0	0E 4B 0C E4 36 C3 0E 85 0C 88 45 4E 44 2E 46 4F	.K..6.....END.FO
4CB0	52 CD 8B 4C FC 0E 98 36 9F 0E 4A 36 C3 0E 98 36	R..L..6..J6...6
4CC0	24 0D B4 0E 6A 36 DB 0E 98 36 97 0F 71 0D B4 0E	\$...j6...6..q...
4CD0	60 36 DB 0E 98 36 9F 0F 71 0D 9F 0E 24 37 C3 0E	'6...6..q...\$7..
4CE0	4A 36 9F 0E 3C 36 9F 0E A2 11 D0 08 1C 00 E9 43	J6...<6.....C
4CF0	52 43 FD 42 2A 0E 37 3D 3D 49 E5 0C FD 0B D0 08	RC.B*.7==I.....

Address

Hexadecimal

ASCII

Address	Hexadecimal	ASCII
4D00	04 00 85 0C B1 0E DA FF 52 43 24 37 9F 0E 0F 37	.....RC\$7...7
4D10	C3 0E 60 36 B4 0E 03 37 DB 0E 32 36 9F 0E 92 45	..`6...7..26...E
4D20	85 0C 83 4C 43 D2 A9 4C FC 0E 66 08 0D 24 4A C3	...LC..L..f..\$J.
4D30	36 B4 0E D0 08 07 00 66 08 0A 24 4A 85 0C 85 4C	6.....f...\$J...L
4D40	54 59 50 C5 22 4D FC 0E DA 36 B4 0E 6C 3D D0 08	TYP."M...6..l=...
4D50	0F 00 4B 0C 58 09 66 08 20 24 4A F1 08 F9 FF A3	..K.X.f. \$J.....
4D60	36 4E 0E 4E 0E A2 3D 71 0D 33 0E 58 09 90 09 B4	6N.N...=q.3.X....
4D70	0E 66 08 7F FD 0B 66 08 20 1A 12 D0 08 06 00 2A	.f.#.f. ....*
4D80	0E 90 09 F1 08 E8 FF 14 0D A3 36 58 09 90 09 B4	.....6X....
4D90	0E 66 08 80 C3 11 D0 08 0C 00 90 09 B4 0E 24 4A	.f.....\$J
4DA0	B1 08 07 00 66 08 20 24 4A F1 08 E2 FF 85 0C 85	....f. \$J.....
4DB0	50 52 49 4E D4 3E 4D FC 0E 2C 08 00 C1 B9 36 C3	PRIN.)M.,....6.
4DC0	0E E4 36 4E 0E B4 0E 6C 3D D0 08 0A 00 24 4A 14	..6N...l=...\$J.
4DD0	0D B1 08 F0 FF 2A 0E E5 37 9F 0E 1C 48 3C 37 9F	.....*..7...H<7.
4DE0	0E 4A 36 C3 0E 3C 37 24 0D B4 0E 6A 36 DB 0E 3C	.J6..<7\$...j6.<
4DF0	37 97 0F 71 0D B4 0E 60 36 DB 0E DE 40 A0 41 56	7..q...`6...@.AV
4E00	36 B4 0E D0 08 15 00 66 08 0C 24 4A 28 4D 28 4D	6.....f...\$J(M(M
4E10	28 4D 28 4D 28 4D B1 08 04 00 46 4D 28 4D FD 42	(M(M(M...FM(M.B
4E20	E5 0C D0 08 D7 FF 07 36 9F 0E 36 38 C3 0E 85 0C	.....6...68....
4E30	85 4E 45 57 4E C4 AF 4D FC 0E DC 37 9F 0E 4E 0E	.NEWN..M...7..N.
4E40	19 37 9F 0E C3 11 33 0E 19 37 9F 0E 66 08 17 71	.7....3...7..f..q
4E50	0D 1A 12 12 0C 80 36 9F 0E F3 35 9F 0E E6 11 27	.....6...5.....'
4E60	36 9F 0E 07 36 9F 0E A2 11 FD 0B 12 0C 4E 0E 7B	6...6.....N.(
4E70	37 DB 0E D0 08 85 00 E5 37 9F 0E 66 08 17 71 0D	7.....7..f..q.
4E80	DC 37 9F 0E C3 11 D0 08 0F 00 DC 37 9F 0E 66 08	.7.....7..f:
4E90	0B 89 0D B1 08 26 00 E5 37 9F 0E 66 08 0B 71 0D	.....&..7..f..q.
4EA0	DC 37 9F 0E 1A 12 D0 08 0F 00 DC 37 9F 0E 66 08	.7.....7..f.
4EB0	0B 89 0D B1 08 06 00 E5 37 9F 0E 4B 0C E9 1A 0F	.....7..K....
4EC0	37 9F 0E 66 08 18 89 0D 4B 0C E9 1A D1 1A 4E 0E	7..f....K.....N.
4ED0	1C 48 19 37 C3 0E 3C 37 9F 0E F3 35 C3 0E 3C 37	.H.7..<7...5..<7
4EE0	24 0D B4 0E F3 35 24 0D DB 0E 3C 37 9F 0F 71 0D	\$....5\$...<7..q.
4EF0	B4 0E F3 35 97 0F 71 0D DB 0E 85 0C 86 4E 45 57	...5..q.....NEW
4F00	42 4E C4 30 4E FC 0E 4E 0E 80 36 9F 0E E6 11 DC	BN.ON..N..6.....
4F10	37 9F 0E 87 37 C3 0E E5 37 9F 0E D3 37 C3 0E D0	7...7...7...7...
4F20	08 08 00 2A 0E B1 08 16 00 4E 0E 7F 47 3C 37 9F	...*.....N.#G<7.
4F30	0F 71 0D 9F 0E DC 37 C3 0E 80 36 C3 0E 4E 0E 8B	.q....7...6..N..
4F40	36 9F 0E E6 11 D0 08 08 00 2A 0E B1 08 16 00 4E	6.....*.....N
4F50	0E 7F 47 3C 37 9F 0F 71 0D 9F 0E E5 37 C3 0E 8B	.#G<7..q....7...
4F60	36 C3 0E 85 0C 86 52 45 53 48 4F D7 FC 4E FC 0E	6.....RESHO..N..
4F70	58 09 90 09 81 49 DE 40 A0 41 90 09 9A 43 E0 3C	X....I.@.A...C.<
4F80	F1 08 F0 FF 85 0C 84 53 48 4F D7 65 4F FC 0E 4B	.....SHO.eO..K
4F90	0C 81 49 66 08 18 66 08 18 4B 0C 58 09 90 09 A6	..If..f..K.X....
4FA0	42 2A 0E DE 40 A0 41 90 09 9A 43 FD 42 E5 0C D0	B*..@.A...C.B...
4FB0	08 0A 00 2A 0E 90 09 14 0D A6 0C E0 3C F1 08 DE	...*.....<...
4FC0	FF 4A 36 9F 0E 32 36 9F 0E A2 11 D0 08 04 00 BD	.J6..26.....
4FD0	48 4E 0E 66 08 18 C3 11 D0 08 25 00 66 08 18 33	HN.f.....%f..3
4FE0	0E 58 09 90 09 A6 42 2A 0E DE 40 A0 41 90 09 9A	.X....B*..@.A...
4FF0	43 FD 42 2A 0E E0 3C F1 08 EA FF B1 08 04 00 2A	C.B*..<.....*



Address

Hexadecimal

ASCII

Address	Hexadecimal	ASCII
5000	0E 85 0C 88 50 52 49 4E 54 45 52 D3 86 4F 57 0F	...PRINTER..OW.
5010	75 4B 9B 4B 10 4C 45 4C 92 4C 8A 53 45 54 50 52	uK.K.LEL.L.SETPR
5020	49 4E 54 45 D2 03 50 FC 0E 2B 38 B4 0E 9F 0F D1	INTE..P..+8.....
5030	1A 56 0D 0E 50 71 0D 9F 0E 8A 08 85 0C 85 3C 53	.V..Pq.....<S
5040	48 4F BE 1A 50 FC 0E DC 37 9F 0E 87 37 9F 0E E9	HO..P...7...7...
5050	1A 19 37 9F 0E 89 0D 24 0D 66 08 18 D1 1A E5 37	...7...\$.f.....7
5060	9F 0E D3 37 9F 0E D1 1A 19 37 9F 0E 89 0D 4C 0D	...7...7...L.
5070	4B 0C E9 1A 6E 4F 85 0C 83 53 48 CF 3D 50 FC 0E	K...nO...SH.=P..
5080	05 4F 38 4E 7B 37 B4 0E D0 08 08 00 8D 4F B1 08	.0BN(7.....0..
5090	04 00 45 50 80 36 9F 0E 92 45 85 0C 86 4F 55 54	..EP.6...E...OUT
50A0	4C 2F D2 78 50 FC 0E 19 37 9F 0E 66 08 17 71 0D	L/.xP...Z..f..q.
50B0	DC 37 9F 0E A2 11 D0 08 0C 00 8B 36 9F 0E 80 36	.7.....6...6
50C0	9F 0E 7E 50 8B 36 9F 0E FD 35 C3 0E 80 36 9F 0E	..~P.6...5...6..
50D0	07 36 9F 0E E6 11 D0 08 04 00 85 0C 80 36 9F 0E	.6.....6...
50E0	07 36 9F 0E A2 11 D0 08 32 00 07 36 9F 0E 80 36	.6.....2..6...6
50F0	9F 0E 89 0D C1 0C 80 36 9F 0E 32 36 9F 0E 7B 09	.....6..26..(.
5100	89 0D 7B 09 A1 30 D3 0C 52 2A 32 36 6F 0E 80 36	..(..0..R*26o..6
5110	9F 0E 07 36 C3 0E B1 08 A4 00 80 36 9F 0E 32 36	...6.....6..26
5120	9F 0E 89 0D C1 0C 07 36 9F 0E F3 35 9F 0E A2 11	.....6...5....
5130	D0 08 10 00 07 36 9F 0E 32 36 9F 0E 89 0D F3 35	.....6..26.....5
5140	6F 0E 9C 38 2C 08 00 01 71 0D 9C 38 58 09 07 36	o..8,...q..8X..6
5150	9F 0E 90 09 9F 0E A2 11 D0 08 10 00 07 36 9F 0E	.....6...
5160	32 36 9F 0E 89 0D 90 09 6F 0E 9F 0F 21 09 E0 FF	26.....o...!...
5170	32 36 9F 0E 07 36 9F 0E 7B 09 E9 0A 8B 36 9F 0E	26...6..(....6..
5180	32 36 9F 0E A2 11 E5 0C D0 08 16 00 8B 36 9F 0E	26.....6...
5190	32 36 9F 0E 89 0D 07 36 9F 0E 71 0D FD 35 C3 0E	26....6..q..5..
51A0	7B 09 32 36 6F 0E D3 0C 07 36 6F 0E 07 36 9F 0E	(.26o....6o..6..
51B0	80 36 C3 0E FD 35 9F 0E 8B 36 C3 0E 85 0C 83 4C	.6...5...6.....L
51C0	45 D8 9C 50 FC 0E 80 36 9F 0E 07 36 9F 0E 14 0D	E..P...6...6....
51D0	A2 11 D0 08 20 00 27 36 9F 0E 07 36 9F 0E AE 36	.....'6...6...6
51E0	B4 0E 89 0D 80 36 9F 0E 3F 3C 1A 40 6C 3D D0 08	.....6...?(&@! =
51F0	04 00 85 0C 32 36 9F 0E 14 0D 80 36 9F 0E 37 0D	....26.....6...7.
5200	28 3C 3C 36 9F 0E 54 3F 85 0C 83 52 45 D8 BE 51	(((&6..T?...RE..Q
5210	FC 0E 07 36 9F 0E 80 36 9F 0E 14 0D A2 11 D0 08	...6...6.....
5220	1C 00 32 36 9F 0E 80 36 9F 0E 37 0D 28 3C 3C 36	..26...6...7..(((&6
5230	9F 0E 54 3F 6C 3D D0 08 04 00 85 0C 27 36 9F 0E	..T?l=.....'6..
5240	07 36 9F 0E AE 36 B4 0E 89 0D 80 36 9F 0E 3F 3C	.6...6...6...?(&
5250	1A 40 85 0C 86 53 45 41 52 43 C8 0A 52 FC 0E 6E	.@...SEARC...R..n
5260	37 B4 0E 55 0C E6 11 D0 08 08 00 C4 51 B1 08 04	7..U.....Q...
5270	00 10 52 6C 3D E5 0C D0 08 08 00 07 36 9F 0E 37	..Rl=.....6...7
5280	0D 4E 0E 14 0D 7E 50 85 0C 83 44 45 CC 54 52 FC	.N...~P...DE.TR.
5290	0E AE 36 B4 0E D0 08 1A 00 07 36 9F 0E 80 36 C3	..6.....6...6..
52A0	0E 07 36 9F 0E 37 0D 8B 36 C3 0E 5D 52 B1 08 0E	..6...7...6...JR...
52B0	00 07 36 9F 0E 37 0D 07 36 9F 0E 7E 50 85 0C 84	..6...7...6...~P...
52C0	53 41 56 C5 89 52 FC 0E 66 08 1E E6 35 DC 35 58	SAV..R..f...5.SX
52D0	09 90 09 F8 0D 4B 0C A1 20 14 0D 2C 08 00 04 21	.....K.....!
52E0	09 F0 FF 2A 0E 85 0C 84 49 4E 49 D4 BF 52 FC 0E	...*.....INI..R..
52F0	DC 35 2C 08 00 30 A4 15 4B 0C 1D 36 DB 0E F3 35	.5,..0..K..6...5

Address

Hexadecimal

ASCII

Address	Hexadecimal	ASCII
5300	66 08 60 A4 15 4B 0C AE 36 DB 0E BE 38 27 36 C3	f.\.K..6...8'6..
5310	0E 4B 0C 19 37 C3 0E 27 36 9F 0E 4E 0E 8B 36 C3	.K..7...'6..N..6..
5320	0E 14 0D 80 36 C3 0E 2C 08 00 02 71 38 C3 0E 2C	....6.....q8...
5330	08 00 01 7B 38 C3 0E 66 08 0C 27 36 9F 0E DB 0E	...{8..f...'6....
5340	E6 35 37 0D 32 36 C3 0E 2C 08 0D 0D 32 36 9F 0E	.57.26.....26..
5350	C3 0E E6 35 3C 36 C3 0E 27 36 9F 0E 4E 0E FD 35	...5<6...'6..N..5
5360	C3 0E 14 0D 07 36 C3 0E 27 36 9F 0E F3 35 C3 0E	.....6...'6...5..
5370	BE 38 91 37 C3 0E BE 38 9B 37 C3 0E 66 08 36 75	.8.7...8.7..f.6u
5380	36 DB 0E 4B 0C 6A 36 DB 0E 4B 0C 60 36 DB 0E 27	6..K.j6..K.'6..'
5390	36 9F 0E 9C 38 C3 0E 4B 0C EE 36 DB 0E 4B 0C F9	6...8..K..6..K..
53A0	36 DB 0E 55 0C 2C 08 0D C0 DB 0E 4B 0C 2B 38 DB	6..U.,.....K.+8..
53B0	0E 10 4C 07 36 9F 0E 36 38 C3 0E 08 3B 85 0C 85	..L.6..68...;...
53C0	46 52 45 53 C8 E7 52 FC 0E 79 46 12 36 B4 0E A6	FRES..R..yF.6...
53D0	42 2A 0E DE 40 A0 41 12 36 B4 0E 9A 43 52 43 FD	B*..@.A.6...CRC.
53E0	42 D0 08 21 00 12 36 B4 0E 66 08 18 E6 11 D0 08	B..!.6..f.....
53F0	10 00 6D 44 A8 0F 12 36 6F 0E 55 0C 19 37 6F 0E	..mD...6o.U..7o.
5400	E1 08 C9 FF 55 0C 48 37 DB 0E BD 48 D2 44 FA 48	....U.H7...H.D.H
5410	D0 08 31 00 66 08 18 12 36 B4 0E 58 09 90 09 A6	..1.f...6..X....
5420	42 D0 08 12 00 DE 40 90 09 9A 43 52 43 FD 42 2A	B.....@...CRC.B*
5430	0E B1 08 0A 00 A6 0C 4B 0C 48 37 DB 0E E0 3C F1	.....K.H7...<.
5440	08 DC FF 48 37 B4 0E D0 08 0F 00 4A 36 9F 0E F3	...H7.....J6...
5450	35 66 08 60 71 0D C3 0E 85 0C 87 52 45 46 52 45	5f.'q.....REFRE
5460	53 C8 BF 53 FC 0E C5 3B C7 53 F8 45 B4 4C 85 0C	S..S...;S.E.L..
5470	87 3F 53 48 52 49 4E CB 5A 54 FC 0E 8F 0F 07 36	?SHRIN.ZT....6
5480	9F 0E FD 35 9F 0E 89 0D A2 11 D0 08 18 00 07 36	..5.....6
5490	9F 0E 37 0D 4E 0E FD 35 C3 0E 07 36 9F 0E 7E 50	..7.N..5...6..~P
54A0	B1 08 12 00 07 36 9F 0E 37 0D 4E 0E FD 35 C3 0E	.....6..7.N..5..
54B0	8B 36 E3 0E 85 0C 82 3F C5 70 54 BD 54 CA CA A0	.6.....?pT.T...
54C0	00 94 01 AD 55 69 49 01 29 01 95 00 4C 46 08 86	....UiI.)...LF..
54D0	45 58 50 41 4E C4 B6 54 FC 0E 66 08 05 6E 37 DB	EXPAN..T..f..n7.
54E0	0E 80 36 9F 0E 07 36 9F 0E 89 0D D0 08 2E 00 80	..6...6.....
54F0	36 9F 0E 07 36 9F 0E A2 11 D0 08 0E 00 8B 36 9F	6...6.....6.
5500	0E 07 36 9F 0E B1 08 0C 00 07 36 9F 0E 37 0D 80	..6.....6..7..
5510	36 9F 0E 05 4F 45 50 B1 08 36 00 36 38 9F 0E 07	6...OEP..6.68...
5520	36 9F 0E 89 0D D0 08 28 00 36 38 9F 0E 32 36 9F	6.....(68..26..
5530	0E A2 11 D0 08 0E 00 36 38 9F 0E 07 36 9F 0E B1	.....68...6...
5540	08 0C 00 07 36 9F 0E 37 0D 36 38 9F 0E 7E 50 85	....6..7.68..~P.
5550	0C 83 4C 58 D8 CF 54 FC 0E 80 36 9F 0E 07 36 9F	..LX..T...6...6..
5560	0E 14 0D A2 11 D0 08 24 00 27 36 9F 0E 07 36 9F	.....9.'6...6..
5570	0E AE 36 B4 0E 89 0D 14 0D 80 36 9F 0E 37 0D 3F	..6.....6..7.?
5580	3C 1A 40 6C 3D D0 08 04 00 85 0C 32 36 9F 0E 80	<.@1=.....26...
5590	36 9F 0E 2B 3C 3C 36 9F 0E 54 3F 85 0C 83 52 58	6..(<<6..T?...RX
55A0	D8 51 55 FC 0E 07 36 9F 0E 80 36 9F 0E 14 0D A2	.QU...6...6.....
55B0	11 D0 08 1A 00 32 36 9F 0E 80 36 9F 0E 28 3C 3C	.....26...6..(<<
55C0	36 9F 0E 54 3F 6C 3D D0 08 04 00 85 0C 27 36 9F	6..T?1=.....'6..
55D0	0E 07 36 9F 0E AE 36 B4 0E 89 0D 80 36 9F 0E 37	..6...6.....6..7
55E0	0D 3F 3C 1A 40 85 0C 83 52 45 D0 9D 55 FC 0E 6E	..?<@...RE..U..n
55F0	37 B4 0E 55 0C E6 11 D0 08 08 00 57 55 B1 08 04	7..U.....WU...

Address

Hexadecimal

ASCII

Address	Hexadecimal	ASCII
5600	00 A3 55 6C 3D E5 0C D0 08 08 00 07 36 9F 0E 37	..U1=.....6..7
5610	0D 4E 0E 14 0D 7E 50 85 0C 88 54 4F 2D 46 4F 52	.N...~P...TO-FOR
5620	54 C8 E7 55 FC 0E 4B 0C 2C 08 0C C0 DB 0E 4B 0C	T..U..K.,.....K.
5630	2C 08 0E C0 DB 0E A3 19 85 0C 86 4C 45 58 52 45	,.....LEXRE
5640	D8 19 56 FC 0E 55 0C 31 37 DB 0E 55 0C 6E 37 DB	..V..U.17..U.n7.
5650	0E 07 36 9F 0E 7F 47 3C 37 9F 0F 71 0D 9F 0E DC	..6..#G<7..q....
5660	37 C3 0E FD 35 9F 0E 7F 47 3C 37 9F 0F 71 0D 9F	7...5..#G<7..q..
5670	0E E5 37 C3 0E 3D 49 E0 3C E1 3B D0 08 36 00 82	..7...=I.<.;..6..
5680	48 D0 08 08 00 C5 3B 8F 52 F8 45 D7 49 D0 08 08	H.....;R.E.I...
5690	00 C5 3B 5D 52 F8 45 AA 49 D0 08 08 00 C5 3B ED	...;J.R.E.I.....;
56A0	55 F8 45 BB 54 D0 08 08 00 C5 3B D8 54 F8 45 B1	U.E.T.....;T.E.
56B0	08 C4 FF 80 36 9F 0E 07 36 9F 0E 89 0D D0 08 26	....6...6.....&
56C0	00 80 36 9F 0E 07 36 9F 0E A2 11 D0 08 0A 00 32	..6...6.....2
56D0	36 9F 0E B1 08 08 00 07 36 9F 0E 37 0D 36 38 C3	6.....6..7.68.
56E0	0E B1 08 18 00 8B 36 9F 0E FD 35 9F 0E 89 0D D0	.....6...5.....
56F0	08 0A 00 07 36 9F 0E 36 38 C3 0E A5 50 4B 0C 1D	....6..68...PK..
5700	36 DB 0E 4B 0C 2C 08 10 C0 DB 0E EE 36 B4 0E F9	6..K.,.....6...
5710	36 DB 0E 85 0C 88 45 4E 44 50 41 53 54 C5 3A 56	6.....ENDPAST.:V
5720	FC 0E EE 4A 07 36 9F 0E 7F 47 3C 37 9F 0F 71 0D	...J.6..#G<7..q.
5730	9F 0E DC 37 C3 0E 38 4E 4B 0C 1D 36 DR 0E 64 54	...7..8NK..6..dT
5740	85 0C 87 3C 50 41 53 54 45 BE 15 57 FC 0E C1 0C	...<PASTE..W....
5750	07 36 9F 0E 90 09 E9 0A D3 0C 4E 0E 07 36 6F 0E	.6.....N..6o.
5760	80 36 6F 0E 20 57 85 0C 84 47 45 54 D3 42 57 FC	.6o. W...GET.BW.
5770	0E 3C 11 66 08 1E 55 0C A1 20 07 36 DC 35 89 0D	..<.f..U...6.5..
5780	3C 11 71 0D 9F 0E FD 35 DC 35 89 0D 3C 11 71 0D	<.q....5.5.<.q.
5790	9F 0E 4E 0E DC 35 89 0D F0 37 C3 0E 89 0D F9 37	..N..5...7.....7
57A0	C3 0E F9 37 9F 0E E5 0C D0 08 04 00 85 0C F9 37	...7.....7
57B0	9F 0E 2C 08 00 05 71 0D 32 36 9F 0E 07 36 9F 0E	.....q.26...6..
57C0	89 0D A2 11 E5 0C D0 08 06 00 5C 3C 85 0C 07 36	.....\<...6
57D0	9F 0E 4E 0E FD 35 C3 0E 8B 36 C3 0E 3C 11 F0 37	..N..5...6.<..7
57E0	9F 0E 2C 08 00 04 56 1B 66 08 1E 71 0D 55 0C A1	.....V.f..q.U..
57F0	20 3C 11 F0 37 9F 0E 2C 08 FF 03 FD 0B 71 0D 07	<..7.....q..
5800	36 9F 0E 2C 08 00 04 E9 0A 2C 08 00 04 F0 37 9F	6.....7.
5810	0E 2C 08 FF 03 FD 0B 89 0D F9 37 9F 0E 14 0D A2	.....7.....
5820	11 D0 08 61 00 07 36 9F 0E 2C 08 00 04 F0 37 9F	...a..6.....7.
5830	0E 2C 08 FF 03 FD 0B 89 0D 71 0D F0 37 9F 0E 2C	.....q..7...
5840	08 00 04 56 1B 66 08 1F 71 0D F9 37 9F 0E 2C 08	...V.f..q..7....
5850	00 04 F0 37 9F 0E 2C 08 FF 03 FD 0B 89 0D 89 0D	...7.....
5860	2C 08 00 04 56 1B 14 0D F8 0D 71 0D 33 0E 58 09	...V.....q.3.X.
5870	4E 0E 90 09 55 0C A1 20 2C 08 00 04 71 0D F1 08	N...U...q....
5880	F0 FF 2A 0E F9 37 9F 0E 4E 0E 07 36 6F 0E 80 36	...*.7..N..6o..6
5890	6F 0E EE 4A 07 36 9F 0E 7F 47 3C 37 9F 0F 71 0D	o..J.6..#G<7..q.
58A0	9F 0E DC 37 C3 0E 38 4E 4B 0C 1D 36 DB 0E 64 54	...7..8NK..6..dT
58B0	07 36 9F 0E 36 38 C3 0E 85 0C 87 3C 45 4E 54 45	.6..68.....<ENTE
58C0	52 BE 68 57 FC 0E 07 36 9F 0E 2C 08 00 01 71 0D	R.hW...6.....q.
58D0	32 36 9F 0E A2 11 D0 08 1C 00 07 36 9F 0E DB 0E	26.....6.....
58E0	55 0C 07 36 6F 0E 55 0C 80 36 6F 0E 7A 54 C7 53	U..6o.U..6o.zT.5
58F0	B1 08 06 00 2A 0E 5C 3C 85 0C 85 45 4E 54 45 D2	....*.\<...ENTE.

Address

Hexadecimal

ASCII

Address	Hexadecimal	ASCII
5900	BA 58 FC 0E C5 3B C4 58 F8 45 B4 4C 85 0C 83 47	.X...;X.E.L...G
5910	45 D4 FA 58 FC 0E 66 08 1E E6 35 DC 35 58 09 90	E..X..f...5 5X..
5920	09 F8 0D 55 0C A1 20 14 0D 2C 08 00 04 21 09 F0	...U... ..!...
5930	FF 2A 0E 07 36 9F 0E 80 36 C3 0E FD 35 9F 0E 8B	*.6...6...5...
5940	36 C3 0E F3 35 9F 0F 71 0D 66 08 5C A4 15 4B 0C	6...5..q.f.\.K.
5950	1D 36 DB 0E 64 54 85 0C 83 43 55 D4 0E 59 FC 0E	.6..dT...CU..Y..
5960	07 36 9F 0E 4E 0E FD 35 9F 0E 89 0D 71 0D 2C 08	.6..N..5...q.,.
5970	00 01 71 0D 32 36 9F 0E A2 11 D0 08 8E 00 27 36	..q.26.....'6
5980	9F 0E 91 37 9F 0E 5C 4A 71 0D B0 25 89 0D C1 0C	...7..\Jq..%....
5990	07 36 9F 0E 27 36 9F 0E 89 0D 90 09 02 0D D0 08	.6..'6.....
59A0	08 00 A1 30 B1 08 04 00 E9 0A D3 0C 52 2A 7C 4A	...0.....R*!J
59B0	FD 35 9F 0E 91 37 9F 0E 5C 4A E9 0A 91 37 9F 0E	.5...7..\J...7..
59C0	5C 4A 71 0D 9B 37 C3 0E 27 36 9F 0E FD 35 9F 0E	\Jq..7..'6...5..
59D0	A2 11 D0 08 0E 00 AB 0F FD 35 6F 0E A8 0F 8B 36	.....5o....6
59E0	6F 0E FD 35 9F 0E 14 0D 4E 0E 07 36 C3 0E 80 36	o..5...N..6...6
59F0	C3 0E EE 4A E5 37 9F 0E DC 37 C3 0E 38 4E 4B 0C	...J.7...7..8NK.
5A00	1D 36 DB 0E 64 54 B1 08 73 00 91 37 9F 0E 27 36	.6..dT...s..7..'6
5A10	9F 0E 91 37 9F 0E 89 0D FD 35 9F 0E 27 36 9F 0E	...7.....5..'6..
5A20	89 0D 5C 4A 93 3E 5C 4A 91 37 9F 0E 71 0D 27 36	..\J..\J.7..q.'6
5A30	9F 0E 89 0D 7C 4A FD 35 9F 0E 27 36 9F 0E E6 11	...!J.5..'6....
5A40	D0 08 11 00 66 08 0C FD 35 9F 0E DB 0E 55 0C FD	...f...5...U..
5A50	35 6F 0E FD 35 9F 0E 4E 0E 07 36 C3 0E 80 36 C3	5o..5..N..6...6.
5A60	0E 07 36 9F 0E 37 0D 4E 0E FD 35 C3 0E 8B 36 C3	..6..7.N..5...6.
5A70	0E 27 36 9F 0E 9B 37 C3 0E 20 57 07 36 9F 0E 36	'6...7...W.6..6
5A80	38 C3 0E 85 0C 86 44 45 4C 45 54 C5 58 59 FC 0E	8.....DELET.XY..
5A90	27 36 9F 0E 14 0D 07 36 9F 0E E6 11 D0 08 04 00	'6.....6.....
5AA0	85 0C 07 36 9F 0E 36 38 9F 0E 14 0D A2 11 36 38	...6..68.....68
5AB0	9F 0E 32 36 9F 0E A2 11 FD 0B D0 08 08 00 A8 0F	..26.....
5AC0	36 38 6F 0E FD 35 9F 0E 14 0D 07 36 9F 0E E6 11	68o..5...6....
5AD0	D0 08 4B 00 A8 0F 4E 0E 07 36 6F 0E 80 36 6F 0E	..K...N..6o..6o.
5AE0	A8 0F 4E 0E FD 35 6F 0E 8B 36 6F 0E 07 36 9F 0E	..N..5o..6o..6..
5AF0	F3 35 9F 0E E6 11 D0 08 1F 00 19 37 9F 0E 66 08	.5.....7..f.
5B00	0C 89 0D 4B 0C E9 1A 4E 0E 19 37 C3 0E 1C 48 3C	...K...N..7...H<
5B10	37 F3 35 9F 0F E9 0A 64 54 B1 08 04 00 5E 59 85	7.5...dT...Y.
5B20	0C 83 54 41 C2 85 5A FC 0E 32 36 9F 0E 92 45 62	..TA..Z..26...Eb
5B30	37 B4 0E 66 08 4B A2 11 D0 08 3B 00 66 08 05 62	7..f.K...;f..b
5B40	37 B4 0E 66 08 05 A7 1B 89 0D 07 36 9F 0E F8 0D	7..f.....6....
5B50	66 08 20 10 0B 4E 0E 07 36 6F 0E 80 36 6F 0E 07	f...N..6o..6o..
5B60	36 9F 0E 37 0D 4E 0E FD 35 C3 0E 8B 36 C3 0E 64	6..7.N..5...6..d
5B70	54 B1 08 07 00 66 08 0D 02 59 85 0C 85 50 41 53	T...f...Y...PAS
5B80	54 C5 21 5B FC 0E 07 36 9F 0E 9B 37 9F 0E 91 37	T.!C...6...7...7
5B90	9F 0E 89 0D 71 0D 2C 08 00 01 71 0D 32 36 9F 0E	....q.,...q.26..
5BA0	A2 11 D0 08 34 00 9B 37 9F 0E 91 37 9F 0E E6 11	....4..7...7....
5BB0	D0 08 04 00 85 0C 07 36 9F 0E 4E 0E FD 35 C3 0E	.....6..N..5..
5BC0	8B 36 C3 0E 91 37 9F 0E 9B 37 9F 0E 91 37 9F 0E	.6...7...7...7..
5BD0	89 0D 4C 57 B1 08 60 00 91 37 9F 0E 27 36 9F 0E	..LW...'7..'6..
5BE0	91 37 9F 0E 89 0D 07 36 9F 0E 27 36 9F 0E 89 0D	.7.....6..'6....
5BF0	67 3E 9B 37 9F 0E 91 37 9F 0E 89 0D C1 0C 91 37	g>.7...7.....7

Address

Hexadecimal

ASCII

Address	Hexadecimal	ASCII
5C00	9F 0E 27 36 9F 0E 89 0D 7C 4A 07 36 9F 0E 4E 0E	..6....!J.6..N.
5C10	FD 35 C3 0E 8B 36 C3 0E 07 36 9F 0E D3 0C 71 0D	.5...6...6....q.
5C20	4E 0E 07 36 C3 0E 80 36 C3 0E 91 37 9F 0E 9B 37	N..6...6...7...7
5C30	C3 0E 20 57 5C 3C 07 36 9F 0E 36 38 C3 0E 85 0C	..W\<.6...68....
5C40	81 D6 7C 5B FC 0E 2C 08 80 80 12 0C 4B 30 A8 38	..!L.....KO.8
5C50	66 08 6B 71 0D 9F 0E A8 38 66 08 69 71 0D 9F 0E	f.kq...8f.iq...
5C60	58 09 4E 0E 90 09 9F 0E E6 11 D0 08 12 00 2A 0E	X.N.....*
5C70	90 09 24 0D D3 0C 2A 0E D3 0C 2A 0E 7F 3C 66 08	..\$...*...*.#(f.
5C80	07 21 09 DF FF 2A 0E 4B 0C 85 0C 82 56 A1 40 5C	!...*.K...V.@\
5C90	FC 0E 44 5C 6C 3D D0 08 0E 00 33 0E 4B 30 33 0E	..D\I=.3.K03.
5CA0	C3 0E B1 08 04 00 2A 0E 85 0C 82 56 C0 8B 5C FC	.....*...V..V.
5CB0	0E 44 5C 9F 0E 4B 30 85 0C 87 53 45 54 52 4F 4F	.D\..KO...SETROO
5CC0	CD AA 5C FC 0E 32 36 9F 0E 07 36 9F 0E 89 0D 2C	..\..26...6.....
5CD0	08 00 01 89 0D 2C 08 4F 52 90 5C 85 0C 87 53 45	.....OR.\...SE
5CE0	54 56 41 52 D3 B9 5C FC 0E 2B 38 B4 0E 2C 08 52	TVAR..\..+8...R
5CF0	50 90 5C 85 0C 8C 43 48 45 43 4B 43 48 41 4E 47	P.\...CHECKCHANG
5D00	45 D3 DD 5C FC 0E 2C 08 52 50 AF 5C 66 08 FF E6	E.\...RP.\f...
5D10	11 E5 0C D0 08 20 00 2C 08 52 50 AF 5C 2B 38 B4	.....RP.\+8.
5D20	0E E6 11 E5 0C D0 08 0E 00 2C 08 52 50 AF 5C 2B	.....RP.\+
5D30	38 DB 0E 27 50 85 0C 87 43 4C 45 41 4E 55 D0 F5	8..'P...CLEANU..
5D40	5C FC 0E 2C 08 00 03 2C 08 00 02 58 09 90 09 B4	\.....X....
5D50	0E 6C 3D D0 08 16 00 66 08 20 C3 11 D0 08 09 00	.l=...f.....
5D60	66 08 20 90 09 DB 0E B1 08 04 00 A6 0C F1 08 DE	f.....
5D70	FF 85 0C 88 56 41 4C 49 44 41 54 C5 37 5D FC 0E	...VALIDAT.7J..
5D80	2C 08 4F 52 44 5C D0 08 1A 00 2C 08 41 4D 44 5C	..ORD\.....AMD\
5D90	D0 08 10 00 2C 08 52 50 44 5C D0 08 06 00 55 0C	.....RPD\...U.
5DA0	7F 3C CC 38 2C 08 03 01 71 0D A8 38 66 08 69 71	#(8,...q...8f.iq
5DB0	0D 9F 0E 66 08 18 E9 0A A8 38 66 08 69 71 0D 9F	...f.....8f.iq..
5DC0	0E 66 08 15 71 0D 4E 0E A8 38 66 08 6B 71 0D C3	.f..q.N...8f.kq..
5DD0	0E A8 38 66 08 6D 71 0D C3 0E 4B 0C 85 0C 85 42	..8f.mq...K...B
5DE0	41 53 49 C3 73 5D FC 0E 91 37 9F 0E 2C 08 00 02	ASL.sJ...7.....
5DF0	5C 4A 66 08 50 3F 3C 4B 0C F8 0D 2C 08 00 02 71	\Jf.P?<K.....q
5E00	0D C3 0E 5E 59 E9 0A 41 5D 7E 5D 2A 0E 66 08 4C	...'Y..AJ~J*.f.L
5E10	2C 08 3C D4 DB 0E 2C 08 8F 3A 2C 08 3D D4 C3 0E	..<.....:=...
5E20	66 08 4C 2C 08 F0 FD DB 0E 2C 08 CF 3A 2C 08 F1	f.L.....f...
5E30	FD C3 0E 66 08 FF 04 38 DB 0E 4B 0C 1D 38 DB 0E	...f...8..K..8..
5E40	4B 0C A8 38 FE 39 71 0D DB 0E C3 5C E7 5C 3F 3A	K..8.9q...A.A?:
5E50	04 38 B4 0E 66 08 7F C3 11 D0 08 4F 00 04 38 B4	.8..f.#...O..8.
5E60	0E 6C 3D D0 08 23 00 07 36 9F 0E F8 0D 66 08 20	.l=..#.6...f.
5E70	10 0B 4E 0E 4E 0E 4E 0E 07 36 6F 0E 80 36 6F 0E	..N.N.N..6o..6o.
5E80	FD 35 6F 0E 8B 36 6F 0E 12 38 B4 0E 66 08 07 E6	.5o..6o..8..f...
5E90	11 D0 08 08 00 5C 3C B1 08 0D 00 12 38 B4 0E 66	.....\<.....8..f
5EA0	08 0D E9 1A C4 58 B1 08 A6 FF 7E 5D 64 54 D0 08	.....X...~JdT..
5EB0	04 00 04 5D 2C 08 C9 A0 2C 08 F0 FD C3 0E 66 08	...J.....f.
5EC0	90 2C 08 F2 FD DB 0E 85 0C 86 4C 54 41 42 4C C5	.....LTABL.
5ED0	DE 5D 57 0F 79 3D 8E 5A B7 4D 79 3D C6 52 6F 57	.JW.y=.Z.My=.RoW
5EE0	24 56 84 5B E6 5D 79 3D 79 3D 27 5B 02 59 86 4C	sV.L.Jy=y=f.L.Y.L
5EF0	4F 4F 4B 55 D0 C9 5E F9 5E B5 00 C9 0C 90 04 CA	OOKU...*

Address

Hexadecimal

ASCII

Address	Hexadecimal	ASCII
5F00	CA A9 0C 0A A8 B9 D4 5E 95 00 B9 D5 5E 95 01 A0	.....
5F10	00 4C 8C 08 84 4D 41 49 CE EE 5E FC 0E 55 0C 2C	.L...MAI...U.,
5F20	08 0F C0 DB 0E 55 0C 2C 08 0D C0 DB 0E 3D 49 D0	.....U.,.....=I.
5F30	08 0A 00 43 56 64 54 B1 08 0C 00 57 3D D0 08 06	...CVdT...W=...
5F40	00 15 3D F7 5E E1 3B B1 08 E4 FF 85 0C 85 52 45	..=..';.....RE
5F50	55 53 C5 14 5F FC 0E 2C 08 8D C0 B4 0E 2A 0E 2C	US.....*.,
5F60	08 00 D0 2C 08 00 D0 2C 08 00 30 E9 0A 2C 08 8F	.....0.....
5F70	C0 B4 0E 2A 0E 2C 08 8F C0 B4 0E 2A 0E 85 0C 82	...*.....*....
5F80	52 C5 4D 5F FC 0E 66 08 0D 3C 36 9F 0E DB 0E 71	R.M...f...<6...q
5F90	0C F3 35 9F 0F 71 0D 66 08 5C A4 15 4B 0C 1D 36	..5..q.f.\..K..6
5FA0	DB 0E 55 0C 2C 08 0F C0 DB 0E 55 0C 2C 08 0D C0	..U.....U.,...
5FB0	DB 0E 55 5F 64 54 1B 5F 85 0C 84 4D 53 47 B0 7F	..U_dT...MSG.#
5FC0	5F FC 0E 89 14 3C 20 20 45 44 44 45 20 56 45 52	.....< EDDE VER
5FD0	53 49 4F 4E 20 36 2E 33 2E 20 20 50 52 4F 50 52	SION 6.3. PROPR
5FE0	49 45 54 41 52 59 20 54 52 41 44 45 20 53 45 43	IETARY TRADE SEC
5FF0	52 45 54 20 20 20 20 20 20 20 20 20 20 20 20 20	RET
6000	20 6F 85 0C 84 4D 53 47 B1 BA 5F FC 0E 89 14 3C	o...MSG.....<
6010	43 6F 70 79 72 69 67 68 74 20 28 63 29 20 31 39	Copyright (c) 19
6020	38 34 20 62 79 20 49 6E 66 6F 72 6D 61 74 69 6F	84 by Informatio
6030	6E 20 41 70 70 6C 69 61 6E 63 65 20 49 6E 63 2E	n Appliance Inc.
6040	20 20 20 20 20 20 20 20 20 20 20 7C 85 0C 84 4D	!...M
6050	53 47 B2 04 60 FC 0E 89 14 3F 20 20 20 20 20 54	SG...? T
6060	68 69 73 20 70 72 6F 67 72 61 6D 20 69 73 20 61	his program is a
6070	6E 20 75 6E 70 75 62 6C 69 73 68 65 64 20 77 6F	n unpublished wo
6080	72 6E 2E 20 20 20 20 20 20 20 20 20 20 20 20 20	rk.
6090	20 20 20 20 20 20 20 74 6D 85 0C 84 4D 53 47 B3	tm...MSG.
60A0	4E 60 FC 0E 89 14 1F 20 20 20 20 20 20 20 20 20	N'.....
60B0	20 20 20 41 4C 4C 20 52 49 47 48 54 53 20 52 45	ALL RIGHTS RE
60C0	53 45 52 56 45 44 85 0C 84 4D 45 53 D3 9B 60 FC	SERVED...MES...'.
60D0	0E A3 36 A2 3D 66 08 A0 10 0B 97 0F 71 0D A3 36	..6.=f.....q..6
60E0	F8 0D 37 0D B4 0E 4B 0C 58 09 F8 0D 90 09 71 0D	..7...K.X.....q.
60F0	B4 0E 66 08 80 28 0C F8 0D 90 09 71 0D DB 0E F1	..f...(.....q....
6100	08 E9 FF 2A 0E 2A 0E 9A 43 85 0C 86 53 49 47 4E	...*.*.C...SIGN
6110	4F CE C8 60 FC 0E 4B 0C 2C 08 C3 5F CF 60 55 0C	O...K.....'U.
6120	2C 08 0D 60 CF 60 8F 0F 2C 08 57 60 CF 60 97 0F	.....'W'....
6130	2C 08 A4 60 CF 60 85 0C 82 47 CF 0B 61 FC 0E 55	.....G..a..U
6140	5F EE 52 14 61 2C 08 00 C0 B4 0E 66 08 7F 1A 12	..R.a.....f.#..
6150	D0 08 F3 FF 1B 5F 85 0C 84 52 45 44 CF 38 61 FC	.....RED.8a.
6160	0E F3 35 66 08 60 A4 15 27 36 9F 0E F3 35 C3 0E	..5f...'6...5..
6170	4B 0C 19 37 C3 0E 9C 38 2C 08 00 01 A4 15 84 5F	K..7...8,.....
6180	85 0C 87 52 45 50 4C 41 43 C5 58 61 FC 0E 61 0C	...REPLAC.Xa..a.
6190	4A 1C AA 13 6D 19 83 19 55 5F EE 52 55 0C 2C 08	J...m...U..RU.,.
61A0	0F C0 DB 0E 55 0C 2C 08 0D C0 DB 0E 2C 08 05 08	....U.,.....
61B0	2C 08 F2 03 C3 0E 66 08 AD 2C 08 F4 03 DB 0E BF	.....f.....
61C0	3E 14 61 14 59 1B 5F 85 0C 84 57 41 52 CD 82 61	)..a.Y...WAR..a
61D0	FC 0E 6D 19 83 19 62 13 84 5F 85 0C 20 20 20 20	..m...b....

I claim:

- 1. Apparatus for designating a desired region of the contents of a computer storage apparatus comprising: a processing unit coupled to the storage apparatus; a display connected to the processing unit; a keyboard connected to the processing unit to control the processing unit and the display; and first and second switchable designation means coupled to the processing unit for causing the processing unit to search the storage apparatus for a pattern entered into the keyboard while at least one of the first and second switchable designation means is activated, wherein the first designation means causes the processing unit to search for the pattern in a first direction from a selected location on the display and the second designation means causes the processing unit to search in an opposite direction from said selected location.
- 2. Apparatus as in claim 1 wherein each of the first and second designation means comprise keys on the keyboard.
- 3. Apparatus as in claim 2 wherein the keys comprise momentary contact push buttons.
- 4. Apparatus as in claim 3 wherein the first and second designation keys are disposed adjacent a space bar key.
- 5. Apparatus as in claim 1 wherein the display includes a cursor at a position.
- 6. Apparatus as in claim 5 wherein the first designation means causes the cursor position to change from a first cursor position to the first occurrence of the pattern to the left of the first cursor position.
- 7. Apparatus as in claim 6 wherein the second designation means causes the cursor position to change from the first cursor position to the first occurrence of the pattern to the right of the first cursor position.

nation means causes the cursor position to change from the first cursor position to the first occurrence of the pattern to the right of the first cursor position.

- 8. Apparatus as in claim 7 wherein the second designation means causes all of the region on the display between the first cursor position and the first occurrence of the pattern to the right of the first cursor position to be designated.

- 9. Apparatus as in claim 1 wherein the region on the display comprises a region of text displayed on the display.

10. Apparatus for directing a search to designate a desired segment of alphanumeric material stored in a computer storage apparatus comprising:

- a data processing unit coupled to the storage apparatus;
- a display connected to the processing unit;
- a keyboard connected to the processing unit to control the display;

first and second switchable designation means coupled to the processing unit for causing the processing unit to search the storage apparatus for a pattern entered into the keyboard, which pattern corresponds to an end of the desired segment while at least one of the first and second switchable designation means is activated, wherein the first designation means causes the processing unit to search for the pattern in a first direction from a present cursor position on the display and the second designation means causes the processing unit to search in an opposite direction.

- 11. Apparatus as in claim 10 wherein each of the first and second switchable designation means comprises a momentary contact push button key on the keyboard.

\* \* \* \* \*

40

45

50

55

60

65