

mini'app'les

apple computer user group newsletter

VOLUME VI No 10

OCTOBER 1983

CALENDAR

WHICH	WHEN
St. Paul Branch - Note 3	Tue Oct 4 7pm-10pm
Pascal Note 1	Wed Oct 5 7:30pm
Dakota County Branch	Tue Oct 11 7pm-10pm
Business Note 10	Thu Oct 13 7:00pm
REGULAR MINI'APP'LES Note 2 Map inside	WEDNESDAY October 19th Prgm-7:00pm SIGs-8:00pm+
Investment SIG	Wed Oct 19
Education SIG	Wed Oct 19
Medical SIG	Wed Oct 19
Business SIG	Wed Oct 19
VisiCalc Note 9	Tue Oct 25 7:00pm
Minnetonka Branch	Wed Oct 26 7pm-10pm
CP/M Note 5	Wed Oct 26 7:00pm
Pascal Note 1	Wed Nov 2 7:30pm
St. Paul Branch - Note 3	Tue Nov 8 7pm-10pm
Dakota County Branch	Tue Nov 8 7pm-10pm
Board Meeting Note 2	Wed Nov 9 7:30 pm
Business Note 10	Thu Nov 10 7:00pm
REGULAR MINI'APP'LES Note 2 Map next issue	WEDNESDAY Nov 16th Prgm-7:00pm SIGS-8:30pm+
Investment SIG	Wed Oct 19
Minnetonka Branch	Wed Nov 23 7:30pm
Apple Computer	Wed Jan 18, '84

CALENDAR

WHERE
Mahtomedi Fire House Hallam & Stillwater.
Minnesota Federal 9th Ave S Hopkins
St. John Neumann Church 4030 Pilot Knob Rd, Eagan
Minnesota Sch of Bus's 11 S. 5th St., Mpls
PENN COMMUNITY CENTER 84th & Penn Bloomington
After Regular Mtg.
After Regular Mtg.
After Regular Mtg.
After Regular Mtg.
PBS 4306 Upton Ave S.
Glen Lake Comm. Ctr. 14300 Excelsior Blvd
Softwaire Centre Southdale
Minnesota Federal 9th Ave S Hopkins
Mahtomedi Fire House Hallam & Stillwater.
St. John Neumann Church 4030 Pilot Knob Rd, Eagan
Norwest Bank S 1st St., Hopkins
Minnesota Sch of Bus's 11 S 5th, Mpls
UNIVERSITY MINNESOTA ST. PAUL Room B45 Bldg 412 Near State Fair Ground
After Regular Mtg.
Glen Lake Community Ctr 14300 Excelsior Blvd
Time Magazine, Sep 26

CALENDAR

WHAT
Regular Pascal Special Interest Group Meeting.
Note 7
Education Orientation led by Arthur English with a cast of SIG leaders. See Announcements.
Note 4
Software Demos - Note 12
Note 13
Note 10
VisiCalc™ Advanced Version for the //e.
Note 8
Dbase II
Regular Regular Pascal Special Interest Group Meeting.
General branch meeting. Note 7
General club business. Meeting is open to all members.
To be announced
ISAAC Software - Note 4.
Note 8
MacIntosh Announcement

Notes: (See back page of mail list for telephone numbers.)

- | | | | | |
|--------------------|--------------------|------------------|----------------------|--------------------|
| 1. John Schoeppner | 4. Eric Holterman | 7. Bob Pfaff | 10. Subir Chatterjee | 13. Stewart Haight |
| 2. Chuck Thiesfeld | 5. W. Scott Ueland | 8. Martin Thames | 11. Bill DeCoursey | |
| 3. Pete Halden | 6. Dan Buchler | 9. Mike Carlson | 12. Jane Chatterjee | |

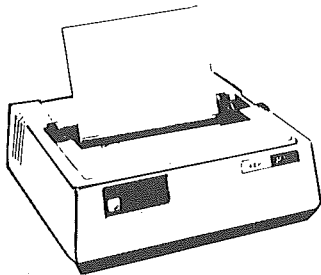
WE'RE NO. 1

IN SERVICE • AVAILABILITY • PRICE

We guarantee it, City Desk Computer Warehouse will not be undersold. And, it's nearly impossible to beat our service. Normally, we fulfill an order and ship it via UPS within 24 hours from when we receive the order. If you need it even sooner pick it up yourself at our offices.

call (612) 933-1771 or mail the order form below.

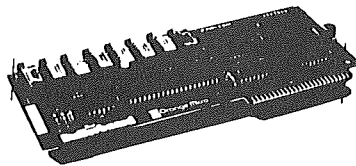
OKIDATA MICROLINE 92



- 160 CPS print speed
- Correspondence quality mode
- Bi-directional logic seeking
- Friction and tractor feed
- Lower case decenders
- Subscripts, superscripts & underling

Qty. _____ @ \$539.95

The Bufferboard For Apples and Printers

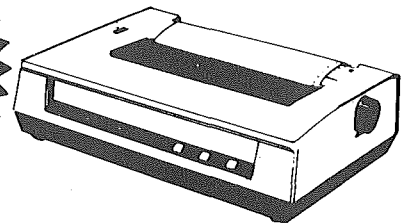


- Plugs into the Apple
- Standard 16K memory buffer
- Upgradeable to 32K or 64K
- Automatic memory configuration
- Speeds operation of printers with no buffer
- Easy to install and operate

Qty. _____ @ \$127.00



PROWRITER 8510



- 120 CPS Print Speed
- 1K Buffer
- 136 characters per line
- Friction and tractor feed
- Adjustable tractors

Qty. _____ Subject to availability @ \$375.00

PRINTERS

___	C. ITOH Prowriter 8510 P	@ \$ 375.00
___	OKIDATA Microline 82A P	@ \$ 429.95
___	OKIDATA Microline 84 P	@ \$1,025.95
___	OKIDATA Microline 92 P	@ \$ 539.95
___	OKIDATA Microline 93 P	@ \$ 910.95
___	NEC PC-8023 A P	@ \$ 499.95
___	QUME Sprint II	@ \$1,449.95

Qty _____
Some Printers subject to availability

INTERFACE CARDS

___	Grappler +, Graphics Interface	@ \$ 127.00
___	The Bufferboard (Printer Buffer)	@ \$ 127.00
___	Buffered Grappler + (Bufferboard & Grappler combined)	@ \$ 185.00

Qty _____

9 1/2 X 11 TRACTOR PAPER

___	3200 sheets white 15 lb.	@ \$23.50
___	2500 sheets white 20 lb.	@ \$20.00
___	11 x 14 7/8 wide paper	
___	5000 Continuous labels	@ \$15.25
___	2000 labels with 9 1/2" Carrier	@ \$ 9.25
___	Tractor Index Cards	

Qty _____

DISKETTES

All Formats Available

**FOR THE BEST PRICES
ON DISKETTES
CALL CITY DESK**

Verbatim maxell ELEPHANT

RIBBONS

___	EPSON MX-80, FX-80	@ \$ 5.70
___	EPSON MX-100	@ \$11.95
___	NEC PC-8023A	@ \$ 5.70
___	C. ITOH Prowriter	@ \$ 5.70
___	Paper Tiger	@ \$ 9.25
___	OKIDATA Microline	@ \$ 2.25
___	OKIDATA Microline 84	@ \$ 5.36
___	QUME Sprint m/s	@ \$ 5.49

Qty _____ 5 1/4" Library case @ \$ 2.50



**ELEPHANT MEMORY
#1 DISKETTES**

NOW ONLY **\$17.50**/box

Send your order to: City Desk Computer Warehouse P.O. Box 16152, Mpls. MN 55416 **Call Our Bulletin Board (612) 929-8966**

- Please ship my order C.O.D. via UPS.
 Enclosed is my check or money order plus
 6% sales tax & shipping. (call for shipping rates)
 Check or money order enclosed for \$ _____

Name _____
 Address _____
 City _____ State _____ Zip _____
 Telephone _____

CITY DESK COMPUTER WAREHOUSE

(612) 933-1771

420 Excelsior Avenue East, Suite 101, Hopkins, MN 55343



ANNOUNCEMENTS

This newsletter

Because of the effort expended by the newsletter staff, who are all volunteer members, to produce the 64-page September special edition, and, because of the work involved with the Twin City Computer Show (TCCS - a report appears below), we decided in mid summer that this October edition would consist of a Membership List, ads and announcements. We would love to bring you a September edition every month, but we cannot do so at our present level of staff, or without a considerable increase in advertising revenue.

The membership list was handed out to new members at the TCCS.

We will return to our normal format in November.

OCT General Meeting

The October meeting will be back at Penn Community center. See map facing back cover and calendar on front cover.

This will be an education orientation meeting. Arthur English will give a short overview on what the Education objectives of Mini'app'les are. He will try to identify what type of education the club might offer.

This will be followed by a presentation by each SIG leader on what each SIG does, what educational activities they plan and what a member might expect to gain from participating in that SIGs meeting. Feed back from the membership will be solicited throughout.

APPLE SERVICE AND PARTS

- **REPAIRS:** 9 Yrs. Experience, 24 Hr. Service Avail., Flat Rate, Contracts Too!
- **POWER SWITCH:** Replaced with Pro Mini-Toggle, only \$15.00
- **PARTS:** Every IC Instock; Dealer and Club Inquiries Invited
64K RAMS, 16K + 64K STATIC RAM, Call for Immed. Quote
- **CABLES:** 4 Foot Disk Cables, 3 M Gold Connectors \$25 Ea., 2 for \$25
Printer Cables Too - WE MAKE ANY CABLE

CALL NOW!

PROTO PC inc. 612-644-4660

2439 Franklin Ave., St. Paul, Minnesota 55114

DISKCOVER

The *Leader*

With Over

400 TITLES

For Your Apple* Computer

Remember Mini-'App-'les Club
Members receive a **10% Discount**
off of our everyday low prices!

*Apple is a registered trademark of Apple Computer.

DISKCOVER SOFTWARE, INC.

3619 West 50th Street, Edina, Minnesota 55410
(2 Blocks East of 50th and France)

HOURS:

Mon. & Thurs. 10 a.m. to 8 p.m.
Tues., Wed., Fri., Sat. 10 a.m. to 6 p.m. • Closed Sunday
(612) 929-0551

iv

SOFTWARE



Mini'app'les Software
Errata
by Dan Buchler

Jus: as a new car has bugs when a new model comes out, so does software - Confucius Buchler 1983. Well, here's where you hear about the bugs and how to fix them. We apologize for any inconvenience - but where else but in a User Group would you get such rapid communications and attention?

1 Mini'scrip and Micro Mailer documentation.
Problem: Both sets of documentation were produced with Magic Window which uses a CTRL-C to mark the end of the file. Unfortunately the Okidata Microline printers, IDS Paper Tigers and Prisms and perhaps others use CTRL-C to turn on graphics mode. Its sort-of hard to read the text after that happens.
Solution A: use a different printer!
Solution B: we will take the CTRL-C out in a later edition of the software. If you have one of those printers and need a modified file, call Dan Buchler.

2 Micro/Mailer.
Problem: If you go into the middle of a file to update an entry, you may end up losing all of those records that follow the one being corrected; the record count is set equal to the record number being updated.
Solution:
BOOT DISK and EXIT to BASIC
LOAD MICRO/MAILER DOM.2 [Return]
Type in following:
71 GOSUB 33: GOSUB 44: GOSUB 503: GOTO 56.
[Return]
503 GOSUB 362: GOSUB 366: FOR E = 1 TO 8:
PRINT CHR\$(34);I\$(E): NEXT: GOSUB 365
RETURN [Return]
SAVE MICROMAILER DOM.2 [Return]

[Return] means hit RETURN key.

3 Higher Print.
Problem: If you own a Grappler, Higher Print will not work with the version supplied.
Solution 1: If you are using an Epson MX-80 or MX-100, do the following:
Boot Disk and take EXIT to BASIC.
Type:
BLOAD HIPRNT EPSON-GRAPP [Return]
CALL -151 [Return]
8616 [Return]
You should see 8616 - OE. If not, do it again!
8616:C [Return]
BSAVE HIPRNT EPSON-GRAPP,A\$8600,L\$331[Return]
Now RUN HELLO and and go through configuration process for EPSON with Grappler.

Solution 2:
If you are using a CITHO, do the following:
Boot Disk and take EXIT to BASIC.
Type:
BLOAD HIPRNT CITHO-GRAPP [Return]
CALL -151 [Return]
8616 [Return]
You should see 8616 - OE. If not, do it again!
8616:C [Return]
BSAVE HIPRNT CITHO-GRAPP,A\$8600,L\$2F1[Return]
Now RUN HELLO and and go through configuration process for CITHO with Grappler.

Correction to "Clean Two"
by Jo Hornung

This is a correction to the article "CLEAN TWO" by Tom Alexander, in the September newsletter. A mistake was made while keying in instruction #1. It should have read

1. Insert DOS 3.3 System Master disk in drive ONE and cleaning disk in drive TWO.

The rest is okay. We apologize to Tom and anyone who may have been confused by the error.

We fix fried Apples

Bring in your equipment anytime you need service. We support Mini'app'les with special prices to club members.

We also sell a wide variety of Apple products, software and stuff to help you make the best use of your Apple. We hope that you will agree...

it's the personal service that counts.

Mike Carlson 4306 Upton Ave. South
929-4120

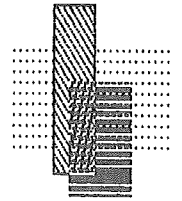
Tom Edwards 2067 Ford Parkway
698-1211



THIS ENTIRE AD WAS CREATED AND PRINTED AS A SINGLE GRAPHIC USING AN APPLE II AND THE FONTRIX SOFTWARE SYSTEM (FOR SALE BELOW)

SOFTWARE SPECIALS

FOR MINI'APPLES MEMBERS



FONTRIX

Window is 16 times screen size.
 Use fonts supplied, or create your own. 11 sets included.
 Insert graphics from other sources, or create using keyboard, joystick, paddles, tablet, etc.
 Easy to learn and use.
 Many more features.
 Requires 48k min., Applesoft in ROM, or //e, and parallel printer interface.

Retail \$75 Special \$60

FONTPAK VOL 1

10 more character sets, including many graphics shapes, headline and decorative fonts.

Retail \$20 Special \$16

DIVERSI-DOS

Tired of waiting for your disk drive? You need DIVERSI-DOS. The lowest cost alternative.

Speeds up the running of programs by speeding up disk accesses 3-5 times.

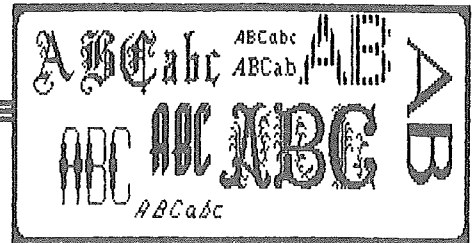
Works for ALL file types.

Copy onto your program disks. It will be used automatically every time you run the program.

Compatible with Fontrix and Format II.

Retail \$30 Special \$5 (distribution fee only)

FORMAT II



Fast, powerful, easy to use word processor.
 New, enhanced version. Easy to learn and use.
 Text on screen looks like it will when printed.
 "What you see is what you get."
 Single keystroke editor.
 Form letters, filing, selective merge, data base.
 Supports 80-col., floppy or hard disk, all printers and print features.
 Make unlimited backups.

Retail \$150 Special \$120

THE INCREDIBLE JACK

3 programs in 1- word processing, calculation, and filing.

Use the word processor to lay out data input screens, form letters, invoices, etc. Imbed calculations in text, merge names, etc., from files into text.
 40 or 80 col.
 64k and 2 disk drives req.

Retail \$179 Special \$95 while supply lasts, then \$155.

Minnesota residents add sales tax
 Include \$3 per order for shipping.



Dept. M1
 P. O. Box 24241
 Apple Valley, MN 55124



MINI'APP'LES
 The Minnesota Apple Computer Users' Group, Inc.
 P.O. Box 796
 Hopkins, MN 55343

MINI'APP'LES OFFICERS

President	Chase Allen	432-6245
	15718 Hayes Trail,	
	Apple Valley, MN 55124	
Past President	Ron Androff	452-5230
	1725 Crest Ridge Lane,	
	Eagan, MN 55122	
Vice President	Chuck Thiesfeld	831-0009
	8416 Xerxes Avenue S.,	
	Bloomington, MN 55431	
Treasurer	John L. Hansen	890-3769
	38 Birnamwood Drive,	
	Burnsville, MN 55337	
Secretary	Hugh Kurtzman	544-7303
	11622 Live Oak Dr.,	
	Minnetonka, MN 55343	

BOARD MEMBERS

Beginners' Consultant	S.K. Johnson	869-3447
Blank Disk Bulk Purchases Co'tor	Peter Gilles	475-3916
Board members at large	Ken Slingsby	507/263-3715
	Steve George	935-5775
	Jo Hornung	922-7665
DOM Editor	Al Peterman	721-3295
Education Co'tor	Arthur English	824-4131
Membership Co'tor	Ann Bell	544-4505
Parliamentarian	Larry Larson	788-0728
Publications Co'tor	Daniel B. Buchler	890-5051
Publicity Co'tor	A. Michael Young	884-2841
Software Coordinator	Chuck Boody	933-5290
Spcl Int. - Business	Subir Chatterjee	330-7347
Spcl Int. - Communic'n	Jay Warrior	489-8694
Spcl Int. - Education	Jane Chatterjee	888-9447
Spcl Int. - FORTH	Mark Abbott	854-8304
Spcl Int. - Genealogy	Bill Decoursey	574-9062
Spcl Int. - Invest'nt	Eric Holterman	454-5628
Spcl Int. - Medical	Stewart Haight	644-1838
Spcl Int. - Pascal	John Schoeppner	455-8613
Spcl Int. - Visicalc	Mike Carlson	929-4120
Spcl Int. - CP/M & Hardware Coordinator	Scott Ueland	623-3749
Technical Coordinator	Dave Laden	489-8321
Branch Coordinators:		
Dakota County	Bob Pfaff	452-2541
Minnetonka	Martin Thames	934-3517
St. Paul	Pete Halden	770-6624

NEWSLETTER PUBLICATION STAFF

Director & NL Editor	Daniel B. Buchler	890-5051
	13516 Grand Avenue S.	
	Burnsville, MN 55337	
Assistant NL Editor	Jo Hornung	922-7665
Contributing Editors	Arsen Darnay	933-0399
	Rita Wetzal	474-5725
Composition	Joan Kistner	
Advertising layout	Eric Holterman	454-5628
Mailing Coordinator	Hugh Kurtzman	
	Steve George	

INFORMATION

This is the listing of paid-up members of Mini'app'les, the Minnesota Apple Computer Users' Group, Inc., a non-profit club. This listing is Copyrighted © by Mini'app'les and may not be reproduced in whole or in part.

Questions

Please direct questions to appropriate board member or officer. Technical questions should be directed to the Technical Coordinator.

Membership

Applications for membership should be directed to the Membership Co-ordinator: Ann Bell 544-4505
 8325 39th Avenue N.
 New Hope,
 Minnesota, 55427

\$12 buys membership for one year. New members and persons renewing after letting membership expire, pay a \$5 administration fee. Members receive a subscription to the club's newsletter and all club benefits.

DOMs

The 3 most recent DOMs (Disk of the Month) are available at meetings for \$5/disk or any DOM may be ordered by mail for \$7.50/disk. Contact Terry Schoeppner,
 Box 241, Inver Grove Heights
 MN, 55075 (455-8613)

Members may have DOMs copied to their own media. Contact Chuck Thiesfeld - details within most newsletters.

Dealers

Mini'app'les does not endorse any specific dealers but does promote distribution of information which may help club members to identify the best buys and service. Consequently, the club does participate in bulk purchases of media, software, hardware and publications on behalf of its members.

Newsletter Contributions

Please send contributions directly to the Newsletter Editor. Hard copy binary or text files are preferred, but any form will be gratefully accepted. Deadline for publication is the 1st Wednesday of the month preceding the month in which the item might be included. An article will be printed when space permits if, in the opinion of the Newsletter Editor, it constitutes suitable material for publication.

Advertising

Direct newsletter advertising inquiries to our co-ordinator Eric Holterman at:
 PO Box 21-425
 Eagan, MN, 55121
 612-454-5628

ABBOTT - BOGDA

ABBOTT, MARK	55420	612-292-1635	BAKEWELL, LEROY (LEE)	55118	612-451-9770
ABERMAN, DAVID	55403	612-926-6224	BAKSHI, RAUI	55343	612-535-1080
ABRAHAMSON, GERALD T.	55414	612-331-6097	BALASUBRAMANIAN, RAJ	55112	612-631-3394
ABRAMS, JASON	55416	612-926-9576	BALDUS, HECTOR J.	55337	612-435-5013
ABRAMSON, NANCY	55118	612-455-0559	BANN, LUDWIG	55432	612-571-6703
ADAMS, LYNNE E.	55343	612-933-8553	BARKER, PAUL F.	55344	612-944-7247
ADAMS, ROBERT R.	55108	612-646-2587	BARKS, BRADLEY E.	55402	612-544-5154
ADASI, WARIBO	55411	612-546-6560	BARKSDALE, PHIL S.	38119	
ADKINS, S. STEVE	55337		BARNABY, SARA	55447	612-473-1977
ADOMEIT, BRUCE L.	55113	612-483-6387	BARNES, C. DAVID	55447	612-473-4504
ADORNATO, LOUIS & LAURIE	55343	612-938-7442	BARNETT, ARTHUR L.	30326	404-262-1963
ADRIAN, GLORIA	55417	612-823-2811	BARRY, DORIS S.	55435	612-927-5833
ADY, LINDA S. & WENDY	55016	612-458-0574	BARTHOLOMEW, DALE E.	98052	206-882-3150
AGOGINO, DR. MERCEDES M.	88130		BARTON, RAY A.	55068	612-423-2956
AGRIMSON, MARGARET	55340	612-478-9469	BARTOSZEK, WILLIAM V.	55434	612-786-2087
AHMANN, ROBERT T.	55110	612-777-0079	BATESON, ROBERT N.	55429	612-561-2823
AICHINGER, CLIFF	55109	612-777-0707	BAUER, JOHN R.	55403	612-377-0515
AINSWORTH-LAND, GEORGE	55403	612-377-1607	BEACHY, JEFFERY A.	43064	
ALBRECHT, DENNIS B.	55369	612-420-5840	BEALES, ROBERT A.	55120	612-454-6338
ALEXANDER, ROBIN A.	54601		BEAUCHANE, RONALD E.	55447	612-473-3049
ALEXANDER, THOMAS P.	55105	612-698-8633	BECKER, WILLIAM L.	55101	612-771-9787
ALICH, BOB	55343	612-872-9622	BECKMAN, G.	TWS-9AD	
ALLEN, CHASE B.	55124	612-432-6245	BECKMAN, JOHN C.	55118	612-451-6572
ALLEN, DAVID	55104	612-645-1025	BECKMAN, RICHARD D.	55337	612-890-6464
ALLEN, GALE	55435	612-941-3920	BEDOR, ERNEST J.	55402	612-934-3003
ALLEN, HARRY	61032	815-232-6264	BEEBE, KATHYE	54022	715-425-2015
ALLERSON, PATRICIA	55112	612-633-2336	BEIHOFFER, DALE E.	55447	612-473-4777
ALPAOUTI, SEYHOUN	55414	612-623-3730	BELANGER, WM.V., JR(BILL)	55431	612-881-4119
ALTMAN, DENIS	55112	612-426-3974	BELL, ANN T.	55427	612-544-4505
AMES, ROBERT	55343		BELL, TRACIE R., JR	55409	612-823-3442
ANDERSON, B. WADE	55112	612-484-2497	BELLEZZA, FRANCIS S.	45701	614-592-2430
ANDERSON, C. RONALD	55124	612-452-3677	BENDEL, DEBBIE	55417	612-866-2766
ANDERSON, COLIN E. (KELLY)	55119	612-735-2956	BENDER, DAVID P.	55337	612-435-5644
ANDERSON, CRAIG	55337	612-435-3409	BENING, ROBERT F.	55014	612-429-3434
ANDERSON, DAVID	56267	218-367-2566	BENNETT, DALE	55014	
ANDERSON, DAVID C.	56221		BENNETT, THOMAS H.	55426	612-545-6371
ANDERSON, DAVID R.	55337	612-894-1088	BENNIN, DIANN M.	55431	612-881-1232
ANDERSON, DENNIS C.	55110	612-426-1455	BENSER, EARL H.	55437	612-884-2148
ANDERSON, DON E.	54022	715-425-9417	BENSON, DORIS I.	55108	612-644-5368
ANDERSON, EARL	55419	612-729-0357	BENSON, JACK A.	55112	612-633-1706
ANDERSON, J. LEAVITT	55411	612-473-7079	BENSON, JOHN M. & LYNN	55416	612-922-0971
ANDERSON, JAMES L.	56001	507-625-7305	BENSON, STEPHEN	55403	612-871-2776
ANDERSON, LLOYD L.	55112	612-483-9146	BERG, DARMAN D.	55429	612-533-5714
ANDERSON, NANCY C.	55412	612-521-7528	BERG, MARK L.	55104	612-647-1422
ANDERSON, RICHARD N.	55124	612-432-2359	BERG, ROBERT	55014	612-784-9752
ANDERSON, ROBERT O.	55441	612-559-1237	BERGAN, R.W.	55404	612-874-9827
ANDERSON, ROBERT O., JR	55344	612-941-3560	BERGE, MARK ALAN	55112	612-784-8489
ANDERSON, WILLIAM A.	56002	507-388-5867	BERGH, JON	55110	612-483-3958
ANDRE, PETER	55343	612-938-0718	BERGLUND, WALLACE J.	55105	612-698-1154
ANDROFF, ROBERT	55428	612-536-9771	BERGSTAD, JOHN B.	55403	612-926-2194
ANDROFF, RONALD	55122	612-452-5230	BERKE, LANNY R.	55442	612-559-1534
ANDRYS, JOHN E.	55075	612-455-6648	BERKO, RICHARD M.	55337	612-890-4666
ANKER, JOHN A.	55123	612-452-6084	BERNACHE, NORMAND A.	20740	301-277-6935
ANSHELL, CHUCK	60302	312-386-7733	BEROSIK, TOM	55407	612-823-2113
ARIES, RICHARD S.	55068	612-432-3230	BESTE, WILLIAM L.	55410	612-926-2237
ARMSTRONG, TIMOTHY C.	54026	715-248-3400	BETZ, CHARLES C.	55422	612-533-4841
ARNOLD, R.A.	55116	612-699-2293	BEVERLEY, JOHN W.	55420	612-881-2418
ARONS, DENNIS J.	55417	612-827-1697	BIALKE, JAMES R.	55418	612-788-6959
ASTOLFI, JORIS	FRANCE		BIELKE, K.	55901	507-282-5915
ATKINS, PATRICK W.	95014		BIRCH, GLORIA M.	55437	612-881-0644
AUBIN, DENNIS J.	55109	612-777-2269	BIRNBAUM, MICHAEL	30062	
AULICK, JAMES W.	55337	612-894-5445	BIRNBERG, CARL	55116	612-699-2617
AUSTIN, CURTIS	55422	612-588-6767	BLACK, RALPH	55418	612-789-5384
AUTEY, RICHARD A.	55025	612-464-2157	BLACK, ROBERT A., JR	55430	612-566-1019
AWE, DONALD E.	55437	612-835-1896	BLACKETT, JAMES C.	55124	
AYERS, KIRKHAM L.	55408	612-823-6534	BLAKE MIDDLE SCHOOL	55343	
AYERS, MICHAEL B.	55407	612-823-0139	BLAKE SCHOOLS-A/V MEDIA	55403	
BABCOCK, DANIEL D.	55112	612-484-5565	BLAKE, DOROTHY J.	55343	612-473-3232
BACICH, BARBARA M.	55419	612-825-3048	BLASKE, LEE	56301	612-253-1905
BAGLEY, RUSSELL D., MD	55437	612-835-4195	BLOCK, DONALD E.	55331	612-474-2449
BAGSTAD, RON & MIKE	55318	612-448-6715	BLOMBERG, JON M.	55364	612-472-3280
BAICHTAL, BARBARA	55407	612-822-2381	BOCK, EDWARD J.	55405	612-377-5717
BAKER, JAMES J.	55408	612-872-6741	BOERGERHOFF, LYNN	55432	612-786-7167
BAKER, STEVEN E.	55343	612-835-6141	BOGDA, GERALD F.	55436	612-920-2510



BOHANON - CRABB

BOHANON, MARGARET (PEG)	55410	612-922-7063	CARRÓLL, DOUG	55016	612-459-0477
BOLL, MARIE D.	55364	612-472-7383	CARROLL, JOSEPH E.	55343	612-938-4028
BOLTÓN, LARRY D.	55337	612-432-6507	CARSTENS, ALLAN M.	55432	612-786-0384
BONDE, PETER & JULIE	55421	612-788-0317	CARTER, BRUCE A.	55420	612-854-7181
BOODY, CHARLES G.	55343	612-933-5290	CARTER, KENNETH W.	55441	612-542-8072
BOOHER, CORINNE A.	55404	612-822-4826	CARTIER, DUANE J.	55418	612-788-6217
BOOTH, RON	56632	218-889-2225	CARVER, IRVING L.	55110	612-429-3475
BORMAN, STANLEY N.	55124	612-452-7852	CASEY, LEWIS M.	55104	612-647-1169
BOROWSKY, W.W.	55431	612-884-6956	CAVENDER, COLLINS/BARBARA	55441	612-546-8237
BOTANA, PHILIP C.	55438	612-831-0051	CELT, JAMES M.	55432	612-780-3745
BOUCHARD, SCOTT	55344	612-941-9654	CHADWICK, BARBARA	55318	612-934-1852
BOWMAN, DALE E.	55419	612-830-3722	CHAMBERLAIN, C.E.(BOB)	55447	612-559-0757
BOYLAN, PAUL M.	55029	612-689-5287	CHAN, CARRIE K.	55113	612-644-2434
BRACKEN, J.A. (JIM)	R3T-2J8	204-269-6484	CHAPMAN, ED	55372	
BRAINERD SR. HIGH SCHOOL	56401		CHARBONNEAU, ROBERT R.	55042	612-777-9737
BRANDAO, JORGE	55343	612-933-3491	CHARTRAND, GERALD R.	55418	612-783-3024
BRANDON, ALAN K.	55337	612-890-6640	CHASE, CHARLES	55403	612-472-2758
BRANDON, MARK	55441	612-545-5350	CHASTAIN, JEAN (IP/360-2)	55102	612-636-6925
BRANDSNESS, DAVID SCOTT	55113	612-631-1653	CHATTERJEE, JANE & SUBIR	55437	612-888-9447
BRAVERMAN, MARCIA	43606		CHERBA, RICHARD	55364	612-472-3181
BRECK SCHOOL	55422		CHIAPPETTA, MICHAEL A.	55106	612-774-0778
BREMNER, TRUDYE	55435	612-941-3527	CHILBERG, JOHN A.	55125	612-739-3931
BRINKMAN, JERRY	55373		CHILD, WILLIAM C., JR.	55057	507-645-4659
BROKERING, T.MARK	55407	612-823-2585	CHORN, ERWIN J. (ERV)	55408	612-825-2258
BRONK, GREGORY J.	55116		CHRISTENSEN, DEAN L.	55455	612-425-1356
BROS, ANDREW	55435	612-941-8012	CHRISTENSEN, LARRY, MD	56164	507-825-2220
BROWN, ARTHUR R.	54011		CHRISTENSEN, LOWELL	55378	612-447-8519
BROWN, CHARLIE	55976	507-533-6510	CHRISTENSEN, ROY	55437	612-881-0111
BROWN, JIM	55443	612-560-0068	CHRISTENSON, RONALD A.	55301	612-497-3217
BRUCKER, HEINRICH K.	55435	612-944-3478	CHRISTENSON, S.V.(VAN)	55436	612-933-8912
BRUDE, DEBBI	55303		CHRISTIANSON, DELL	56501	218-847-6740
BRUENING, PAUL M.	55431	612-831-6222	CHRISTOPHERSON, BILL R.	55416	612-929-0866
BRUHN, EARL W.	55060		CHRISTOPHERSON, JAMES E.	55112	612-636-8329
BRULAND, PHILLIP J.	55422	612-533-5173	CHUN, RAYMOND E.	55113	612-484-0510
BRUMFIELD, WILLIAM C.	55405	612-377-9285	CHURCHILL, TIM R.	55337	612-432-4410
BRYAN, GORDON C.	55426	612-544-8512	CISKEY, MARK L.	55113	612-482-1794
BRYNOLFSON, RUDOLF A.	55406	612-721-6115	CLARK, DWAYNE	55407	612-724-8318
BUCHHOLZ, CHARLES	55417	612-729-8653	CLARK, ROBERT K.	55441	612-546-1754
BUCHLER, DAN	55337	612-890-5051	CLARK, SARA H.	55410	612-922-1335
BUCK, CHRISTOPHER	55343	612-934-0611	CLASEN, JAMES L.	55116	612-698-9259
BUCKLEY, KEVIN E.	55116	612-699-7462	CLAUDE, FRANK W.	55441	612-544-8095
BUECH, RICHARD R.	55112	612-636-2743	CLAY CONSULTANTS	56601	218-278-6234
BUELL, CHARLES D.	55391	612-474-4916	CLEVELAND, RONALD M.	55369	612-425-6009
BUENDING, WILLIAM A.	55343	612-935-7255	COATS, DAVID & KRISTIN	55408	612-870-1820
BULBA, LOUIS	55408	612-825-6693	CODNER, ED	55113	612-644-8474
BUNDTZEN, JOAN	55406	612-729-7509	COHEN, DR. EPHRAIM B.	55416	612-926-1882
BUNNELL, MARVIN	55416	612-920-0018	COLGAN, PATRICK D.	55372	612-447-6290
BURCH, JOHN H.	55423	612-869-8742	COLIN, R.-SCHOOL DIST 709	55802	
BURG, JOHN	55369		COLOSIMO, THOMAS C.	55114	
BURK, JANICE & VERNE T.	55418	612-788-8916	COMFORT HEATING	55418	
BURK, MIKE	55423	612-866-6291	COMSTOCK, SUSAN	55118	612-451-7804
BURKHOLDER, ANN E.	55104	612-646-1164	CONFER, OGDEN P.	56002	
BURNS, JAMES T.	55441	612-544-1750	CONLIN, E. JOSEPH	55401	612-333-2301
BURNS, JON C.	55391	612-871-8951	CONROY, DEL G.	55105	612-224-4486
BUSCHÉ, JEFF	49801	000-774-0803	COOK, AL	55122	612-454-8453
BUTLER, WILLIAM	55101	612-426-3356	COOK, WILLIAM M.	55337	612-890-5717
BUTLER, ZONA	55107	612-739-6959	COOP. EDUC. SEV. AGCY #5	54740	
BYHRE, OTTO V.	55424	612-924-1770	COPELAND, JOHN R.	55447	612-475-3017
BYKOWSKI, JAMES J.	55113	612-645-8982	COPELAND, JULIE W.	55414	612-378-9429
CABRINETY, STEPHEN M.	55435	612-941-4849	COPESE, LAWRENCE E.	55075	612-451-3720
CALIN, BRUCE D.	55408	612-825-8505	CORBERO, PAUL A.	55418	612-789-1256
CALLAHAN, JOHN L.	55106	612-774-0453	CORDES, DAVID C.	55121	612-454-7277
CAMPBELL, MARILYN R.	55433	612-427-4490	CORRELL, THOMAS D.	55438	612-941-0049
CAPE, ROBERT M.	55112	612-786-1187	CORSON, WILFRED A.(WILL)	55410	612-922-7128
CAPEŠ, NELSON R.	55112	612-483-0414	CORWIN, GREGORY J.	54022	715-425-9802
CAREY, JEAN NORTHROP	55409	612-827-1074	COTTER, BERNARD E., JR	55116	612-699-0056
CARLSON, CHERYL	55118	612-451-1406	COTTMAN, WILLIAM J.(BILL)	55409	612-823-3034
CARLSON, CRAIG B.	55125	612-731-1078	COUGHLIN, PATRICK	55423	612-869-9241
CARLSON, DUANE B.	55112	612-636-1603	COURSEN, ROBERT D.	55416	612-920-8120
CARLSON, ERIK V.	55431	612-831-8065	COURT, ARNOLD F.	55344	612-941-0899
CARLSON, MIKE	55416	612-377-6553	COWLEŠ, RUSSELL	55405	612-332-3828
CARLSON, RICHARD P.	55437	612-884-1552	COX, JAMES C., VICE PRES	55437	
CARON, WAYNE	55407	612-724-3202	COYNE, TERENCE J.	55102	612-291-1137
CARR, JAMES E.	55447	612-473-7432	CRABB, LARRY	51110	712-276-7525



CRAIG - FLYNN

CRAIG, WILLIAM P.	55343	612-938-8020	EDWARDS, THOMAS W.	55410	612-927-6790
CREP, JUDEE H.	54022	715-425-5347	EDWARDS, VERLAN	55421	
CREP, ROBERT A.	54022	715-425-5347	EGGERSGLUESS, GENE	55427	612-544-5594
CREWE, NANCY M.	55406	612-721-5820	EHLEN, TIM	67206	000-682-3020
CROCKER, DAN	55391	612-471-7864	EHLERS, WESLEY W.	55418	612-789-8152
CROSS, E. RED	55427	612-544-3839	EISENZIMMER, LEO	55440	612-566-5568
CROSS, JOHN D., JR	55423	612-861-3731	EITREINI, ORRIN	55422	612-588-8583
CROWE, RONALD K.	55432	612-784-9237	EKSTROM, PHYLLIS J.	55437	612-835-2720
CROWLEY, JAMES J.	55417	612-722-2423	ELDRED, DOUGLAS K.	55112	612-636-8162
CUCCHIARA, BRETT	55901	507-289-7663	ELIAS, DONOVAN L.	55432	612-786-3915
CUMMINGS, KIMBALL C.	55424	612-926-3234	ELLERT, JOHN K.	55438	612-944-6339
CURRIER, RAY G.	55433	612-784-6607	ELLINGSON, LUTHER J.	55344	612-941-0532
CURTIS, DAVID B.	55092	612-434-7070	ELLIOTT, C.L.	55410	612-926-9305
CUTCLIFF, JAY E., III	55406	612-729-3547	ELLIS, KENNETH R.	55421	612-781-7111
DAHL, DERROLD	55337	612-890-4116	ELLISON, GEORGE P.	55009	507-263-2586
DAHLQUIST, ALFRED J.	55443	612-560-9086	ELMER, TIM C.	55344	612-937-1548
DALAL, YOGEN	55343	612-935-0948	ELSTON, JO ANN	55343	612-935-0842
DALTON, JOHN W.	55417	612-827-1690	ELWELL, DONALD F.	55436	
DANEK, LAWRENCE G.	55429	612-535-6191	EMBERSON, EILEEN	54701	715-835-6314
DARNAY, ARSEN	55343	612-933-0399	EMERSON, MICHAEL G.	55344	
DAVE'S SHOE REPAIR	55431	612-941-3822	EMPANGER, DANIEL J.	55418	612-788-4370
DAVID, CONNIE	55419	612-823-3862	ENBERG, JAMES L.	55427	612-544-9403
DAVIDSON, JIM	55121	612-452-6773	ENGBRETSON, E.	55408	612-823-5920
DAVIDSON, ROBERT W. (BOB)	55441	612-545-8478	ENGL, WILLIAM (BILL)	55105	612-722-6181
DE BOLT, DONALD C.	55437	612-835-2965	ENGLISH, ARTHUR V.	55417	612-824-4131
DE COURSEY, BILL	55421	612-574-9062	ERICKSON, ARMAND D.	55426	612-545-3796
DE MANN, RONALD D.	55105	612-698-6324	ERICKSON, JUNELL F.	55437	612-884-6226
DE WITT, RICHARD G.	55364	612-472-7282	ERICKSON, LINDA NEUMAN	55117	612-482-1578
DE WITT, WILLIAM J.	55112	612-631-1720	ERICKSON, MARK	55369	612-425-5825
DEEB, ROBERT J.	55075	612-457-0987	ERICKSON, MARY	55419	612-861-8090
DEEGAN, JAMES P.	55812	218-724-6838	ERICKSON, RENWOOD (WOODY)	55124	612-454-1281
DENNY, RALPH	55412	612-522-5204	ERSKINE, BLAIN	55447	612-473-7196
DETMER, WAYNE F.	55110	612-426-4188	ESSEX, DR. LOUELLEN N.	55108	612-644-9607
DEWEY, TOM	55426	612-831-5242	ESTER, KENNETH R.	55442	612-559-5422
DIGITAL DEN-BLAINE	55434		ESTIPP, TENNIS S.	55005	612-462-4382
DIGITAL DEN-BURNSVILLE	55337		EUBANK, EUGENE O. III	55419	612-926-7726
DIGITAL DEN-MENDOTA HTS	55120		EVANS, STEVEN R.	55429	612-535-3756
DIGITAL DEN-MPLWOOD	55109		EWING, BEVERLY	55419	612-827-5140
DIGITAL DEN-ROSEVILLE	55113		FALLAT, ROBERT	55343	612-933-1390
DIGITAL DEN-ST. PAUL	55105		FALLS, ROBERT B.	55416	612-922-4681
DIMATTED, TOM	55432	612-786-9675	FARMER, BRIAN J.	55343	612-522-9043
DIXON, LYNN-SYSTEMS	55440	612-377-6819	FARMER, DAVID E. III	55104	612-644-0204
DOCK, CHARLES (BUD)	55125	612-735-8464	FEI, LINDA G.	55104	612-647-1103
DOCK, PETER L.	55343	612-935-8048	FELDSIEN, LAWRENCE F.	55112	612-484-9055
DOCKEN, GEORGE C.	55418	612-789-3384	FELLOWS, WILLIAM E.	55418	612-789-5631
DOGGETT, BANKS, JR.	52001	319-582-2909	FERENS, JOSEPH A.	55431	612-884-6028
DOHRMANN, RICH -M.S.1878	55402	612-934-5157	FESLER, DANIEL L.	55119	612-739-3295
DOKKA, MARGARET L.	55416	612-926-7847	FIELD, BRIGHAM G.	55343	612-935-2017
DOLNEY, DENNIS	55407	612-721-2785	FIELD, JOHN W.	55124	612-432-8915
DOLNEY, MARY & JERRY	55103	612-488-8142	FILREIS, BRIAN	55337	612-890-2821
DONALDSON, WILLIAM H.	55407	612-724-3378	FINDELL, DONALD H.	55432	612-571-0467
DOUGHMAN, DONALD J.	55436	612-920-1265	FINDLEY, FLETCHER	55123	612-454-7715
DOYLE, JAMES & JUDITH	55337	612-890-9377	FINE, S.J.	55411	612-529-6753
DOYLE, THOMAS	55437	612-835-6505	FINKELSTEIN, MARSHA	55426	612-546-4022
DOYLE, THOMAS F.	55420	612-884-8812	FISCH, RICHARD	55105	612-699-6579
DRAEGER, GARY R.	55423	612-869-4006	FISCHBACH, RUSSELL C.	55112	612-755-0026
DUFF, NICHOLAS E.	55391	612-473-9189	FISCHER, JAMES W.	55102	612-920-7740
DUNCAN, JAMES M.	55407	612-721-3273	FISCHER, MARK S.	55416	612-925-0649
DUNN, JAMES P.	55110	612-483-2366	FISH, JAMES R.	55443	612-566-5317
DUPREY, JIM	55435	612-941-2334	FISHER, GENE	55112	612-633-8188
DUST, JAMES	55343	612-933-8117	FISHER, JAMES F.	55328	612-972-2060
EAGLE, JON R.	55437	612-888-2461	FISK, NEWTON H.	55431	612-831-2772
EATON, DOUGLAS E.	55343	612-933-7446	FITZGERALD, CATHERINE	55405	612-377-0020
EATON, PATRICIA (PAT)	55418	612-789-5669	FITZGERALD, WILLIAM	55337	612-890-4966
EBELING, BRIAN T.	55438	612-920-4676	FITZHENRY, THOMAS M.	55423	612-866-2127
EBERLEIN, ALLEN	55418	612-789-8395	FLANNIGAN, RONALD E.	55445	612-425-1053
ECKSTEIN, JOHN M.	55113	612-488-0063	FLEISCHER, JOEL	55344	612-941-5018
ED, JAMES M.	55105	612-698-8149	FLEISCHMAN, BRIAN C.	55414	612-379-9042
EDMOND, PAT & PETER	55391	612-933-2360	FLETCHER, ALAN L.	55112	612-631-2876
EDMUNDS, PETER	55419	612-823-9482	FLEWELLING, LARRY J.	55397	612-467-3694
EDMUNDSON, JOHN	55104	612-647-9939	FLINT, ROGER	55106	612-771-2868
EDWARDS, BRUCE M.	55426	612-933-3416	FLISTER, STEPHAN P.	55119	612-774-5665
EDWARDS, LOIS A.	55409	612-922-3341	FLUGUM, ROLLAND D.	55364	612-472-1803
EDWARDS, RICHARD F.	55124	612-432-5267	FLYNN, FRANK	55337	612-894-1020



FOOTE - HEIDER

FOOTE, MICHAEL H.	55405	612-377-4021	3RAY, JOHN C. (JACK)	55406	612-729-3910
FORD, PAUL	56098	507-485-0300	GREDER, ROD	61801	
FOSS, KEN	55119	612-777-7772	GREUB, BARB AND LOUIS J.	54022	715-425-5391
FOSSE, MARVIN D.	50658	515-435-4458	GREVEN, DOUGLAS	55447	612-476-1588
FOSTER, DENNIS A.	55112	612-636-5677	GRIME, ALAN	56082	507-931-4453
FOX, GREG	55408	612-825-6692	GRIMSLEY, CHARLES E.	54003	715-273-3449
FRAASE, MICHAEL D.	55082	612-430-1629	GROMMES, RICHARD J.	55421	612-571-2075
FRAKES, MIKE	55105	612-698-4042	GRONVALL, JAMES R.	55044	612-469-5116
FRANCEN, KATHERINE (KITTY)	55331	612-474-3766	GROPPETTI, CLAUDIO	55447	612-475-2883
FRANCIS, JOHN M.	55409	612-937-9624	GROSS, BOB	55437	612-835-7425
FRANKENFIELD, RAYMOND J.	55331	612-474-9724	GROSS, GREGORY S.	55112	612-484-6415
FRANZMEIER, ROGER	55118	612-423-2377	GROVE, BRENDA & PHIL	55407	612-874-8658
FRENCH, ROBERT L.	55112		GROVE, GREG	55445	612-566-1168
FRIESEN, ROGER	55343	612-546-7629	GROVER, NANCY J.	55423	
FROELICH, JOHN P.	55327	612-427-5705	GUETTLER, MARY	55318	612-448-4711
FRYD, DAVID S.	55112	612-636-3878	GUNDERSON, RICHARD A.	55104	612-646-8054
FRYS, RUSSELL N.	55343	612-938-3050	GUTHART, LUANNE L.	55343	
FULLER, MICHAEL F.	55118	612-452-3711	GUY, TERRY J.	55343	612-448-3664
FULLER, RAYMOND A. II	55075	612-451-8109	HABERLE, DAVE	55344	612-941-2172
FUNDINGSLAND, ROGER E.	55369	612-425-8722	HAGBERG, DONALD	55428	612-535-7775
FURUSETH, PEDER M.	55410	612-925-5589	HAGEN, DONALD F.	55343	612-938-1277
GABRIEL, RICHARD S.	55106	612-771-3786	HAGER, RICHARD	55406	612-721-2665
GALE, DAVID	55369	612-425-8003	HAGERTY, CATHLIN J.	55421	612-788-7210
GALE, ROBERT	55112	612-633-1222	HAGGERTY, JAMES J.	55420	612-854-8994
GALIC, GEORGE & MARY ANN	55119	612-739-9205	HAGQUIST, DARLENE & JIM	55105	612-699-8919
GALLETTA, DENNIS F.	16509		HAHN, MR. & MRS. JEROLD T.	55108	612-646-0871
GARDNER, ROBERT L.	55042	612-770-3010	HAIGHT, STEWART A.	55113	612-644-1838
GARFIN, DR. LAURENCE A.	55416	612-374-9291	HALD, RODNEY D.	55337	612-435-2469
GARGARO, NICK	55433	612-427-4048	HALDEN, PETER C.	55042	612-770-6624
GARNETT, GREGORY L.	55057	507-645-8231	HALE, HENRY E. IV	55343	612-934-3255
GARR, LEONARD J.	55413	612-378-1950	HALL, ORVIN J.	55424	
GARRETT, JOSEPH F.	55113	612-647-1816	HALLS, ROGER D.	55112	612-631-9236
GARSKE, MARGARET A.	55328	612-955-2992	HALZLE, DICK	55343	612-935-5900
GARTHWAITE, STEPHEN J.	55391	612-475-0599	HAM, GEORGE A. JR	55428	612-535-5632
GATES, RICHARD E.	55119	612-735-0373	HAMELINK, WILLIAM B.	55438	612-835-4880
GATHJE, DAN J.	55041	612-345-4660	HAMMER, ROLLIE M.	54022	
GAVIN, GORDON	56001	507-388-7269	HAMMOND, DARYL	55117	612-487-1002
GEDDES, DONALD R.	55410	612-925-1299	HANAKAWA, HITOSHI (HANK)	55433	
GEIGER, ANSON D.	55436	612-927-6851	HANCOCK, ALLAN B.	55416	612-884-8932
GENSLER, HAL	55422	612-546-4404	HAND, ELIZABETH R. (BETH)	55435	612-944-9562
GEORGE, STEPHEN T.	55343	612-935-5775	HANNAH, MARY K.	55331	612-471-9728
GERBERICH, SUSAN G.	55426	612-546-5675	HANNIBAL, WAYNE R.	55438	612-941-8257
GERDIN, LARRY	55118	612-457-2341	HANSEN, DONALD V.	55110	612-777-7709
GERHARDT, DEBBEE	55402		HANSEN, GREGORY L.	55444	612-566-2050
GERMSCHIED, PAUL S.	55112	612-483-0764	HANSEN, JAMES K.	55427	612-693-6671
GERSICH, JAMES J.	55429	612-535-7613	HANSEN, JOHN L.	55337	612-890-3769
GERTENBACH, PAUL G.	55082	612-439-0492	HANSON, BYRON L.	55438	612-944-3244
GIBBONS, MICHAEL	55108	612-644-0438	HANSON, DONALD R.	55447	612-473-8145
GIEFER, THOMAS S.	55337	612-435-6444	HANSON, K. LYLE	55424	612-926-7814
GIENEART, RONALD J.	55428	612-535-1645	HANSON, MARGARET	55364	612-472-1423
GILGOSCH, MICHAEL A.	55409	612-822-9078	HANSON, PAUL M.	56001	507-387-7024
GILLES, PETER	55447	612-475-3916	HANSON, WARREN	55108	612-646-4538
GILMAN, BYRON L.	55447	612-473-0632	HARMON, HUBERT N.	55112	612-636-5716
GILMAN, LLOYD, MD	56201	612-235-8283	HARMS, GORDON E.	55369	612-420-2767
GJERDE, DAVID S.	56001	507-625-3971	HARNETTY, M.C.	55125	612-735-0647
GLADSTONE FIRE DEPT.	55109	612-770-4523	HARNIT, BONNIE L.	55343	612-935-7743
GLASER, JEROME C.	55437	612-835-4814	HARRAH, ROBERT C.	55337	612-435-3541
GOEBEL, JUDITH K.	55423	612-869-6159	HARREN, THOMAS	55369	612-425-8459
GOGINS, FRANK	55113		HART, PATRICK V.	56097	507-388-3009
GOLDEN, GEORGE	55343	612-474-3895	HARTZELL CORPORATION	55114	
GOLDSMITH, GARY W.	55407	612-729-7189	HATFIELD, GENE	55343	612-935-3492
GOLDSTEIN, HARRIS M.	55369	612-425-8757	HATFIELD, RICHARD D.	55122	612-452-2814
GOLDSTEIN, JULES	55116	612-690-4447	HATULA, LEO	55441	612-545-8225
GONDEK, SHARON	55104	612-644-7418	HAUER, DARREL	55443	612-561-9018
GOOD, GLENN E.	55443	612-560-0059	HAUER-LOWE, KEITH	55417	612-824-8026
GOODING, MICHAEL J.	01720	617-264-4237	HAYERBERG, PAUL & JIM	55420	612-881-8510
GOODRICH, PHILIP R.	55112	612-633-5517	HAYDEN, STEPHEN	55435	
GORDON, GARY J.	55409	612-827-7648	HEADLEY, RUSSELL K.	55123	612-454-3199
GORDON, TOM	56266	507-249-3825	HEAGLE, C. RUSS	55387	
GORHAM, MARTHA J.	55407	612-827-5077	HEALY, STEPHEN J.	55409	612-925-4127
GOTTIER, RICHARD C.	55343	612-474-7903	HEICHERT, RICHARD E. (RICH)	55119	612-738-5963
GRACZYK, NOEL J.	55421	612-574-0660	HEID, ROGER S.	55337	612-890-7184
GRAHAM, DELBERT E.	55057	507-645-6150	HEIDELBERG, KENNETH E.	55419	612-822-9532
GRAVES, HARRY C.	55447	612-473-1995	HEIDER, DAVID A.	55105	612-224-2117



HEIM - KEHL

HEIM, KENNETH F.	55407	612-729-1690	IANTOSKA, RICHARD A.(DICK)	55420	612-432-9039
HEIM, RICHARD C.	44826	419-668-3869	INDEP.SCHOOL DISTRICT	36356661	
HEINRICH, MARY & RICHARD	55344	612-944-1258	INGHAM, WILLIAM S.	55421	612-571-4931
HEITZMANN, ROSS K.	55113	612-483-2835	INGVALDSEN, RUSSELL E.	55418	612-781-3847
HELBERG, HOWARD H.	55437	612-831-4554	IRISH, WILLIAM J.	55101	612-774-2595
HELMERS, JOHN I.	55976	507-533-8265	JABAS, DUANE	55110	612-426-1244
HELVICK, ALLEN K.	55337	612-890-1020	JACKSON, EDGE	55391	612-473-6415
HENDRICKSON, NANCY & MARK	55303	612-427-5485	JACKSON, PAUL L.	55404	612-874-1956
HENNESSEY, ALICE	55369	612-425-8981	JACKSON, TRUMAN H.	55112	612-633-1045
HEPKER, LARRY L.	55021	507-334-2552	JACOBS, R.E.-FUNDS MGMT	55479	612-452-4987
HEPPELMANN, DONALD	55117	612-771-5887	JACOBS, THOMAS W.	55431	612-884-8683
HERMANSON, ARNOLD N.	55443	612-561-9157	JACOBSON, CHARLES M.	55435	
HESS, KAREN M.	55437	612-831-0580	JACOBSON, RICHARD D.	55438	
HESS, LEONA F.	55110	612-484-8777	JACOBSON, VINCENT	55343	612-933-2426
HEST, JOHN A.	56549	218-483-4507	JACOBY, JOHN S.	55424	612-920-0306
HETTERICK, DAVID R.	55410	612-922-1919	JAEBNE, HERBERT A.(ANDY)	55427	612-544-0901
HLATT, C. FRED	55431	612-888-9032	JANKOSKI, JIM	55423	612-866-0788
HICKOK, MATT	55391	612-473-3324	JARMUZ, MICHAEL	54016	715-386-5030
HIGBY, PORTER	55369	612-420-3649	JARVIS, ROBERT W.	55407	612-830-1153
HILLE, LAWRENCE S.	55432	612-571-5736	JENSEN, JON R.	55414	612-379-9367
HILPISCH, WILLIAM P.	55110	612-429-4937	JENSEN, WILLIAM C.	55401	612-338-0002
HINCK, PAUL E.	55443		JIRIK, BARBARA C.	55102	612-225-4213
HINDS, THOMAS R.	55112	612-786-7741	JOHANNES, RICHARD A.	55407	612-824-8497
HINES, ALAN	55432	612-571-1156	JOHN, ELMER R.	55105	612-699-8352
HINRICHS, EARL & KAREN	55104	612-645-3918	JOHN, MICHAEL L.	55119	612-739-9354
HINTZ, LESTER	56013	507-526-5932	JOHNSON, ALGERNON H.	55438	612-944-2862
HOCHHALTER, MICHAEL R.	55085	612-437-2506	JOHNSON, ALLAN	55418	612-788-4936
HOEFER, FRED D.	55112	612-631-3161	JOHNSON, CAROL LINNEA	55432	612-784-6969
HOEL, JEFFERY W.	55102	612-690-5922	JOHNSON, EARL H.	55112	612-482-9949
HOFFMAN, CHARLES E., JR	55337	612-432-6144	JOHNSON, GARY L.	55106	612-776-4741
HOFFMAN, KENNETH	55423	612-869-7107	JOHNSON, KEITH W., MD	55116	612-698-3292
HOFFMAN, SHIRLEY	55395	612-485-4233	JOHNSON, KRIS	55419	612-920-8028
HOFFMAN, TERRY J.	55421	612-781-2515	JOHNSON, MIKE A.	55104	612-645-1377
HOHMANN, MICHAEL	55410	612-922-2936	JOHNSON, NORTON R.	55438	612-944-7944
HOIBY, JAMES C.	85358	602-684-2622	JOHNSON, REESE C.	55401	612-339-5119
HOKANS, CHARLES C.	55337	612-894-3556	JOHNSON, ROBERT E.	55443	612-425-4070
HOLGUIN, J.R.	55420	612-854-7828	JOHNSON, STEPHEN K.	55419	612-869-3447
HOLLINSHEAD, ROBERT(BERT)	55105	612-228-0770	JOHNSON, STEVE	98032	206-675-6230
HOLLISTER, C.DAVID	55112	612-631-9480	JOHNSON, STEVEN F.	55014	612-786-3028
HOLM, DOUGLAS A.	55407	612-545-2754	JOHNSON, STEVEN J.	55124	612-432-2476
HOLMQUIST, MICHAEL W.	55416	612-890-5617	JOHNSON, STEVEN R.	55437	612-831-1525
HOLMSTROM, DAVID L.	55014	612-784-6788	JOHNSON, WILLIAM R.(BILL)	55406	612-724-5372
HOLTERMAN, ERIC F.	55121	612-454-5628	JOHNSTON, JASON	55110	
HOM, EDWIN S.	55337	612-890-8752	JONES, C.R.(BOB)	55420	612-888-5623
HOOK, JOHN A.	55337	612-435-6281	JONES, JERRY	55343	612-473-3195
HOOPER, STANLEY B.	55055	612-459-7915	JONES, JOHN H.	55406	612-721-4275
HOPKINS BRANCH LIBRARY	55343		JONES, MICHAEL A.	55124	612-432-8715
HORNE, HAROLD J.	55438	612-941-3411	JOSEPH, IRVING	55104	612-645-0899
HORNUNG, JOSEPHINE A.(JO)	55435	612-922-7665	JOSEPH, RICHARD M.	55343	612-938-7360
HOTZE, JOHN	55343	612-934-1281	JOSSMAN, JAMES R.	55433	612-757-7482
HOU, SCOTT Y.	55113	612-483-9612	JOYCE, RICHARD (RIC)	55104	612-645-3772
HOUCK, CHARLES H.	55104	612-778-6509	JUDD, DAVID A.	55123	612-452-6765
HOULE, JAMES H.	06489	000-621-7407	JUETTNER, GREGG	55436	612-933-3451
HOUSTON INDEP.SCHOOL DIST	77056		JUNCKER, DAVID F.	55419	612-824-2317
HOUSTON, JEROME A.(JERRY)	55441	612-559-0460	JURKOVIC, SAMUEL M.	55112	612-633-5146
HOVEY, GERALD R.	55106	612-776-6588	JURKOVSKI, JERRY G.	55417	612-727-3309
HOVLAND, LYLE	56014	507-653-4525	JURY, KENNETH E.	52001	319-588-2167
HOWE, JAMES A.	55337	612-890-5067	KAEMMERER, BILL	55417	612-823-9003
HOWE, THOMAS L.	55422	612-533-2626	KAHN, ARNOLD C.	55432	612-574-0846
HOWES, MARK W.	55105	612-698-4285	KAISER, DAN	55416	
HOYER, CHUCK	55423	612-866-3706	KALDUN, GARY L.	55075	612-450-0153
HOYME, RICHARD	55427	612-545-4642	KAMPF, GARY	55438	612-941-4479
HREHA, RICHARD	55416	612-922-0203	KANNAN, RAGHU	55337	612-890-3046
HSU, SUNG-PENG	55123	612-454-7422	KANOFSKY, S.GENE	55436	612-926-1764
HUBBELL, JAYMES G.	55117	612-489-4713	KARKER, JAMES A.	55125	612-739-0831
HUBER, S.	55431	612-888-8180	KARL, THOMAS A.(TOM)	55103	612-644-0554
HUBERT, PATRICIA W.(PAT)	55436	612-922-7664	KASPER, EUGENE M.	55435	612-941-5490
HUGHES, DAVID	55042	612-777-9303	KASSEL, JAMES W.(JIM)	55105	612-222-3990
HULL, MARK	55421	612-571-1781	KASTE, RAY R.	55422	612-588-2523
HUM, BARBARA	55422	612-521-1529	KAULFUSS, ROBERT W.	55408	612-871-4776
HUMPHREY, JOHN R.	55416	612-920-9712	KEABLE, DOREEN M.	56301	612-251-1156
HUNA, JOAN	55105	612-222-7090	KEEGAN, TERRY M.	55424	612-926-6119
HUSS, A.J., JR.	54015	612-227-2772	KEGEL, STANLEY H., JR.	55424	612-920-1715
HWANG, FRANCIS P.	55406	612-721-1131	KEHL, STAN E.	55402	612-922-8409



KEIM - LUNDERBORG

KEIM, DOUGLAS	55113	612-633-9177	LAMPLAND, JOHN A.	55116	612-699-4422
KEISER, KEN	55110	612-426-4668	LAND O'LAKES	55440	612-786-7779
KELBERER, J.MICHAEL	55416	612-926-3378	LANDAS, M.F.(JAKE)	56001	507-388-5986
KELLER, RANDY	55103		LANDGRAF, FRED	55343	612-934-1906
KELLEY, CHRISTINE L.	55044	612-435-7311	LANGE, ROBERT G.	55432	612-571-1551
KELLY, NAOMI M.	55119	612-770-1293	LANGENFELD, FRED J.	55110	612-429-2010
KELSEY, ROBERT C.	55113	612-633-6102	LANGER, ROBERT R.	55431	612-888-7040
KEMP, JANE M.	55406	612-729-3427	LANGFIELD, WILLIAM H. II	55410	
KENNEDY, CHARLES G.	55075	612-455-3919	LANGSETMO, ELLEN	55422	612-588-3918
KERBER, GARY	55343	612-933-4632	LAPAKKO, NANCY E.	55426	
KEYES, CHARLES L.	55025	612-464-6087	LARKIN, STEPHEN M.	55437	612-831-0443
KEYSER, EARL	55110	612-429-5570	LARSEN, P.STEVE	55122	612-452-7889
KIDDER, CORBIN S.	55102	612-227-5171	LARSON, DONALD W.	55343	612-545-2075
KIEFFER, MARK J.	55428	612-533-9744	LARSON, KENT C.	55391	612-473-5788
KILBANE, JAMES A., JR	55331	612-474-6577	LARSON, LARRY S.	55421	612-788-0728
KING, BRAD	55044	612-469-3812	LARSON, RICHARD B.	55427	612-544-4756
KING, WILLIAM C.	55033	612-437-2161	LARSON, RICHARD D.	55420	612-854-8712
KIRBY, RUSSELL B., JR	55082	612-439-4319	LARSON, RICHARD O.	55407	612-722-1513
KIRKWOOD, TOM M.	55112	612-424-7369	LARSON, VIRGINIA W.	55408	612-823-5882
KISTNER, JOAN C.	55437	612-835-0641	LAUERMÁN, THOMAS M.& MARY	55409	612-822-2828
KITCHAK, GREGORY	55391	612-475-1275	LAURENT, ARMAND E.	55123	612-454-7831
KJELDAAS, PER M.	55441	612-546-2037	LAVERTY, LINDA	55441	612-546-5611
KJORSVIG, SALLY A.	55369	612-424-2634	LAVINE, GERRY	55436	612-925-4544
KLAS, TERRY C.	55436	612-920-2516	LAZER, HAROLD	55426	612-938-6035
KLAUSLER, THOMAS	55044	612-469-5120	LAZER, M.	55422	612-545-0517
KLEIBER, JOHN A.	55416	612-926-0385	LECK, CHARLES H.	55391	612-473-6348
KLEIN, CHARLES J.	55337	612-890-6813	LEDBETTER, MARK	55343	612-938-7589
KLEIN, GEORGE P.	55116	612-698-0454	LEE, ELIZABETH S.(BETTY)	55437	612-831-5456
KLINGE, DUANE	55426	612-922-9453	LEE, KAROLYN L.	55431	612-888-1790
KLOBUCHAR, JIM	55318	612-448-3563	LEE, W.L.	55420	612-888-3142
KLOS, JOHN	55435		LEEMAN, GORDON J.	55113	612-484-1881
KNOWLES, GARY R.	55112	612-636-1152	LEESON, HEIDI	54016	715-386-5280
KNOX, CHARLES S.	55110	612-484-9537	LEIBEL, EUGENE J.	55440	612-636-9589
KNUDSON, WAYNE E.	55441	612-544-7322	LEIF, CHARLES R.	55417	612-866-2038
KNUTSON, DON R.	56088	507-776-6226	LEITGEN, BARBARA	55401	
KNUTSON, GERALD L.	55112	612-483-4269	LEJCHAR, GERALD	55044	612-435-7530
KNUTSON, ROBERT E.	56001	507-387-5197	LEMAY, PETER J.	52556	
KOCHEVAR, JAMES W.	55112	612-482-8996	LEMKE, LARRY & JUDY	55068	612-437-6389
KOENIGS, MIKE	56024	507-257-3927	LEMKE, WILLIAM D.	55406	612-724-8824
KOGEL, PAUL D.	55057	507-663-0060	LEMOINE, GEORGE F.	55419	612-824-8170
KOOY, ELMER D.	55343	612-473-8153	LENZ, T.R.	55120	612-454-3245
KOS, RONALD J.	55422	612-537-3939	LEO, KATHLEEN	55104	612-227-6107
KOSTIAL, BARBARA	55391	612-473-4532	LESTER, CHAU	55438	612-944-6056
KOTZ, DR. A.R.	55110	612-429-1837	LEVEL, ERIC	55406	612-724-7518
KRAHN, DAVID	55092	612-434-4105	LEVITUS, STEPHEN I.	55435	612-941-6555
KRAUSE, KATHY BROWN	55364	612-472-5976	LEWIS, BRENT A.	55104	612-644-5957
KRAUT, BILLEE	55408	612-822-9279	LEWIS, ROY A.	55416	612-920-0456
KREIBICH, DAVID	55420	612-888-1953	LEWISON, ALBERT M.	55343	612-938-3028
KREIMER, JOHN	56001	507-388-6906	LIESKE, JODY R.	56001	507-625-1844
KRIZ, JAMES	55405	612-377-2277	LIN, GEORGE C.T.	55437	612-831-8615
KROMENAKER, ROBERT	55441	612-544-6164	LINCOLN, RICHARD W.	55102	612-221-0300
KSANDER, SCOTT L.	55112	612-633-6414	LINDBERG, CHARLES	55424	612-929-7637
KUDALIS, TIM	55428	612-535-7135	LINDBERG, CURT	55438	612-941-9638
KUEHN, ROBERT B.	55118	612-457-8830	LINDELL, C. BRUCE	55454	612-338-0207
KUHN, GEORGE L.	54016	715-386-9896	LINDNER, ROBERT W.	55033	612-437-6083
KUHNS, RICHARD C.	55337	612-890-4341	LINDNER, WILLIAM E.	55344	
KULAWSKE, WILLIAM V.	55416	612-929-8152	LINDSKOG, ERIC W.	55443	612-561-7971
KULO, KARL T.	55429	612-533-4624	LINNEY, STEVEN R.	55435	
KUNY, JERRY A.	55421	612-571-8633	LIPPERT, LEE M.	55124	612-432-4549
KURTZMAN, HUGH	55343	612-544-7303	LITTON, STEPHEN	55427	612-544-1554
KUSHMAR, JEAN	55331	612-474-5821	LJUNGKULL, JANE	55110	612-429-7504
KYLLO, HOWARD	55122	612-454-1080	LOCHNER, LAWRENCE P.	55436	612-922-0163
LA CROIX, NANCY J.	55369	612-425-6239	LOEBRICK, DONALD	55359	612-479-2181
LA FONTAINE, CHRIS A.	55104	612-292-1841	LOEFFLER, MS.JACKIE	55437	612-831-0521
LA MOTTE, DENNIS E.	55124	612-432-8059	LOMKER, MICHAEL	55422	612-535-0415
LA MOTTE, LES & LYNN	55117	612-489-0707	LONN, DANA	55417	612-824-6074
LA ROCQUE, LEE, A255	55441	612-544-4997	LONTO, TONI	55418	612-781-7817
LABEREE, JON E.	56301	612-253-6052	LOOSE, LA MAR	55117	612-488-5366
LADEN, DAVID E.	55113	612-489-8321	LOWE, ROBERT M.(BOB)	55343	612-933-0464
LAGER, DOUGLAS R.	55419	612-866-4279	LUDWIG, MARK	55106	612-771-1351
LAMBRECHT, JAMES V.	55412	612-588-4440	LUKE, DANIEL J. (DAN)	55102	612-224-2108
LAMBRECHT, JUDITH J.	55113	612-645-7901	LUND, PHILIP S.	55113	612-484-9246
LAMM, PAMELA J.	56001	507-387-7676	LUNDEBY, MICHAEL E.	55408	612-822-7490
LAMPE, FRED R.	55391	612-475-1947	LUNDERBORG, KAY	55431	612-888-9586



LUNDQUIST - NOWICKI

LUNDQUIST, LEON L.	55417	612-721-2395	MILLER, ROBERT C.	55110	612-484-7883
LUTHY, KENNETH W.	55125	612-738-0866	MILLER, ROBERT D.	55419	612-827-1988
LYLE, STEPHEN P.	55337	612-894-2991	MILLS, FRANK S.	55418	612-789-7656
MAC KENZIE, DANIEL E.	55391	612-476-0522	MINNESOTA DEPT OF HEALTH	55440	
MAC LEAN, DAVID E.	55405	612-337-8477	MINNESOTA LAKE SCHOOLS	56068	507-462-3348
MAC TAGGERT, DONALD S.	55375	608-835-9366	MISKOWIEC, DELORES	55401	
MADISON, JAMES L.	55337	612-894-5344	MITCHELL, DAVID	55419	
MAGES, CHARLES J.	55427	612-545-1859	MOELLER, CINDY	55105	612-690-3046
MAHAFFEY, PAUL	55369	612-425-4885	MOLINE, ARLETT E.	55437	612-835-3296
MAHANNAH, STEPHEN L.	55409	612-822-4918	MOLLERUS, MICHAEL J.	55435	612-941-2906
MAHER, GERALD E.	55438	612-944-6252	MON-RAY WINDOWS, INC.	55427	612-559-4009
MAHONEY, THOMAS W.	55435	612-831-3572	MONNAHAN, SCOTT J.	55447	612-631-8021
MAHOWALD, MARK & MAREN	55104	612-647-9620	MONTAIN, PATRICIA A.	55433	612-757-4341
MAIER, JOHN A.	55426	612-544-8240	MOORE, RICHARD L.	55125	612-739-7668
MAJESTY, GILES R.	55016	612-459-4377	MOORE, ROGER	55343	612-938-1601
MALARKEY, DENISE M.	55408	612-825-3874	MORAN, JACK	55424	612-920-0558
MALKOWSKI, MICHAEL	56301	612-255-0859	MORAN, JOHN P.	55105	612-699-0047
MANCHESTER, SUSAN J.	55364	612-472-4583	MORRIS, JEFF	55113	612-631-3143
MANKATO STATE UNIVERSITY	56001		MORRIS, RICHARD A. (RICK)	55409	612-827-1611
MANSFIELD, SUSAN/LARRY E.	55112	612-631-1651	MORRIS, TZVEE	55104	
MANSHEIM, MICHAEL J.	55416	612-933-6152	MORRISON, DUNCAN C.	55337	612-435-2571
MANTHEI, B. MICHAEL	55109	612-777-6343	MORRISON, DWAYNE	56560	218-233-0042
MARCELLIUS, LEN	55423	612-869-8654	MORRISON, JOHN A.	55117	612-771-8008
MARCHIAFAVA, RICHARD A.	55414	612-331-2281	MORRISON, NORM	55441	612-544-3598
MARIASH, CARY N., MD	55112	612-636-8286	MORTENSON, AL	55369	612-425-5534
MARKLE, T.V.	55391	612-471-9777	MORTENSON, JERALD H.	55438	
MARKS, ROBERT J.	55428	612-535-7731	MOTCHENBACHER, CURT	55343	612-938-6647
MAROUSHEK, DALE R.	55106	612-771-3174	MOTZKO, DANIEL T.	55416	612-922-5708
MARRS, ORVAL B.	55337	612-435-6287	MOTZKO, JOHN	55328	
MARSHALL, WILLIAM C., JR	55421	612-574-0484	MUEHLEGGER, JOSEPH J.	55402	612-489-4674
MARTIN, PETER	55401	612-370-0856	MUELLER, DON L.	55447	612-473-0463
MARTIN, REV. GEORGE H.	55409	612-822-1084	MUELLER, JAYNE L.	55437	612-831-2192
MARTY, WILLIAM S.	55119	612-738-1822	MUENKEL, BRIAN J.	55374	612-420-2148
MASON, THOMAS R.	55404	612-824-0825	MUNNICH, LEE W., JR	55402	612-374-1854
MATSON, CHARLES J.	55082	612-436-8527	MUNSON, EDWARD D.	55106	612-771-5844
MATSON, JAMES J.	55436	612-920-2259	MUNSON, LEONARD L.	55113	612-488-2695
MAXWELL, STEPHEN L.	55104	612-225-5431	MURPHY, MICHAEL P.	55119	612-776-0068
MAZZITELLO, LARRY R.	55104	612-224-0796	NASH, PATRICIA	55356	612-475-1549
MC CABE, GREGG	55413	612-379-9342	NAU, RICHARD H.	55417	612-721-3461
MC CANN, JAMES J.	55112	612-636-2282	NEDBALEK, JAMES R.	55343	612-934-3531
MC CLELLAND, DORIE	55118	612-457-4870	NEIGEBAUER, DARYL A.	55060	507-451-4865
MC CONNELL, DAN	55417	612-721-3471	NELLIS, JOYCE	55112	
MC CURDY, RUDI E.	55427	612-545-2198	NELSON, BARBARA	55423	612-861-1038
MC DONELL, DAVID G.	55105	612-699-1137	NELSON, BARRY	55117	612-489-1175
MC GRAW, MICHAEL	55344	612-937-1481	NELSON, DOLLY	55113	612-631-1657
MC GREE, MARK P.	55405	612-377-8340	NELSON, GREGORY S.	55433	612-757-7469
MC KINNEY, JAMES T.	55082	612-439-8228	NELSON, J. MICHAEL (MIKE)	54812	715-357-6160
MC KINNIS STEVE R.	85283		NELSON, JON T.	55431	612-888-2246
MC LEAN, GARY N.	55124	612-432-3046	NELSON, KENNETH D. (KEN)	55414	612-378-1476
MC NEFF, MARIE O.	55343	612-933-1040	NELSON, MARTY	55442	612-559-2038
MEARNS, SAMUEL J.	55343	612-933-8549	NELSON, ROBERT D.	55423	612-866-3957
MEASE, WILLIAM P. (BILL)	55405	612-377-0468	NEREN, MICHAEL I.	55105	
MEDICAL GRAPHICS CORP.	55112		NEUENSCHWANDER, CHUCK	55121	612-452-7474
MEEHL, CHRISTOPHER W.	55428	612-535-3611	NEUMAN, WALLACE G.	55421	612-572-1615
MEHLHAFF, EVELYN	55430	612-560-8732	NEWCOMB, DAVID R.	55369	612-420-6120
MEIER, ROSEMARY	55042	612-777-0015	NEWMARK, RICHARD A.	55119	612-735-4541
MEIERBACHTOL, STEPHEN C.	55057	507-645-4810	NEWQUIST, RONALD E.	55316	612-421-1067
MEIROVITZ, ANTHONY	55409	612-922-6260	NEWSTROM, TERRY L.	55419	612-827-3159
MELANDER, DONALD	55112	612-483-9048	NICHOLS, RICK	55410	612-922-2219
MELANSON, HAROLD	55417	612-722-7550	NICHOLS, ROBERT A.	55014	612-784-0866
MELHADO, MARK E.	55407	612-729-4904	NICOMETO, MICHAEL (MIKE)	49801	906-774-5532
MELONY, CHARLES	55331	612-474-9461	NIELSEN, DAVID R.	55343	612-935-2588
MERLIN, MARY T.	55422	612-545-9170	NIELSEN, DONALD G.	55422	612-533-6222
MERSKY, PAUL & MARC	55118		NIELSON, RANDY	55427	612-542-8133
MESSNER, PHILLIP	55075	612-454-2695	NISKALA, BILL	55440	612-944-3652
MEYER, ALEX J.	55369	612-424-2571	NOHA, RICK B.	55441	612-546-9150
MEYER, CHARLES R.	55435	612-941-8769	NORBACK, JUDY	55435	612-927-5537
MEYER, ROBERT J.	55410	612-920-6414	NORDBERG, DANIEL A.	55427	612-544-3810
MEYER, ROGER L.	55344	612-937-9855	NORDVALL, DAVID	55417	612-724-9174
MIDJE, HOWARD C.	55118	612-457-2028	NORRIS, JANELLE A.	55410	612-920-1430
MIELENS, PAUL M.	55125	612-739-4130	NORTON, JERRY	55016	612-459-7923
MILITELLO, THOMAS E.	90274	213-541-2766	NORTON, JOHN R. III	55434	612-755-9698
MILLER, DANIEL F.	55406	612-722-2674	NORWOOD, ALFRED W.	55391	612-473-7808
MILLER, KEITH N.	55109	612-777-0109	NOVSTRUP, AL	57401	
			NOWICKI, DENNIS	55119	612-471-1566



O'BRIEN - RICHMOND

O'BRIEN, DAVID	55337	612-894-2747	PEW, KEN	55118	612-450-0151
O'BRIEN, DOUGLAS, JR-PRINC	55441		PFAFF, ROBERT J.	55123	612-452-2541
O'CONNELL, JEAN MAGUIRE	55117	612-488-0434	PHARR, MATT	55416	612-922-6147
O'DELL, LOREN H.	55343	612-933-4869	PHILIPSON, WILLARD D.	55113	612-484-8286
O'GLASSER, LAWRENCE	55406	612-721-5641	PHILLIPS, DONALD & ASSOC	55419	612-926-2628
O'HALLORAN, JOHN	55116	612-690-1362	PHILLIPS, PAUL H.	55417	612-724-6273
O'HEARN, MICHAEL (MIKE)	55410	612-920-3929	PICKERING, JEANNE M.	55417	612-823-8488
O'MALLEY, LT.COL.JAMES F.	54016	715-386-9438	PIEPHO, DALE A.	55109	612-770-6079
OEHRLE, GARY F.	55410	612-926-3257	PIHL, LEIF & HARRY	55406	612-729-3948
OELFKE, KENNETH	55339	612-467-2083	PINOTTI, TERRY L.	55432	612-786-7946
OELSCHLAGER, KURT	55107	612-291-2659	PITCHER, JAMES R.	55391	612-471-8308
OELTJENBRUNS, GERHART D.	55337	612-890-4025	PLOUMEN, JIM	55344	612-934-2391
OGBORN, CLARENCE E.	55303		POLKINGHORN, ROBERT L.	55437	612-835-6529
OHNSTAD, DICK M.	55424	612-926-2420	POOTON, TOM	55344	612-944-6859
OLAFSON, GERALD(JERRY)	55416	612-926-3293	POST, RICHARD E.	55427	612-533-1896
OLESEN, RANDAL V.	55343	612-933-1643	POSTERS, HENK	55440	612-473-2281
OLLILA, GLENN	55337	612-435-5929	POTISH, ROGER & JANE	55105	612-225-4324
OLSON, ALAN	55433	612-427-7190	POWELL, DON	55410	612-922-6208
OLSON, C.KENT	55359	612-479-2708	POWELL, LEN A.	55410	612-927-8172
OLSON, GENE H.	55419	612-824-9108	POWERS, JOHN L.	55391	612-473-1391
OLSON, GERARD L.	55437	612-831-1145	PRANIS, ROBERT A.	55318	612-448-3475
OLSON, HERBERT E.	55416	612-926-1968	PRENOSIL, JOE F.	55433	612-755-4101
OLSON, JOHN R.	55405	612-377-2483	PREVES, DAVID A.	55435	612-941-5989
OLSON, REID H.	55414	612-378-2527	PREWITT, ROSIE	55318	612-445-7475
OLSON, RICHARD	55429	612-536-9938	PROKOP, SHARLOT	55112	612-483-9523
OLSON, SCOTT T.	55414	612-623-9735	PUES, V.R.	55423	612-866-5534
OMAN, C.JACK	55014	612-786-2486	PURCELL, THOMAS W.	55435	612-941-2020
ONAN, DAVID W. II	55391	612-473-0143	PUTRICH, DAVID	55423	612-866-9473
OPP, JERRY R.	55068	612-432-6694	QUALEY, TERRY	55110	612-777-6915
OSTLUND, WARREN F.	55435	612-926-3122	QUAMMEN, DAVID S.	55391	612-473-9071
OSTROV, DR. C.S.	55427	612-544-6459	QUAN, DENNIS A.	55014	612-482-7975
OSWALD, JAMES P.	55109	612-777-1830	QUAST, RANDALL R.	55446	612-559-2109
OTTEN, KOYA K.	55044	612-435-8143	QUIMBY, CHARLIE R.	55407	612-822-1661
OTTO, GARY N.	55360	612-657-2348	QUIST, MICHAEL M.	55416	
OZOLS, JURIS & PAULA	55344	612-941-8299	RADKE, HAROLD WM	55112	612-633-1992
PADDEN, JOHN R.	55429	612-566-6869	RAFFIN, THOMAS G.	55075	612-457-3402
PALLAY, SEAN N.	94925		RAINES, JOHN RICHARD	55105	612-699-4943
PARSON, RONALD F.	55112	612-483-3917	RAMLER, DONALD W.	55016	612-459-3481
PATTERSON, PAUL G.	55421	612-574-9424	RANDALL, WILLIAM B.	55343	612-473-6956
PATTERSON, ROBERT P.	55421	612-788-4860	RANNOV, JIM	55426	612-937-8237
PAULSEN, RICHARD (DICK)	55014	612-786-8499	RANSOM, HAL C.	55435	612-926-5786
PAULSON, JOHN	55410	612-925-0620	RASMUSSEN, DAVE C.	55343	612-938-7348
PAULSON, TOM	55356	612-473-6762	RASMUSSEN, GEORGE	55391	612-471-7550
PAUS, GLENN H.	55406	612-722-6477	RATLIFF, JERRY L.	55104	612-647-0783
PAVLISICH, ERNEST J.	55316	612-427-8123	RAY, CHARLES D.	55391	612-475-2000
PAYNE, CHRISTOPHER	55343	612-935-7105	RAYMOND, CAROLYN E.	55117	612-483-6947
PAYNE, JUDITH	55122	612-454-8733	RAYMOND, RONALD G.	54016	715-386-6102
PAYNE, WILLIAM B.	55402	612-374-2931	REED, ALAN	55441	612-559-3907
PEARSON, ALLAN E.	55418	612-789-7924	REED, BOB G.	55428	
PEDERSEN, BJORN	56308	612-846-5135	REFSELL, STEPHEN T.	55424	612-926-9701
PEDERSEN, GREGORY A.	55109	612-770-7638	REHPOHL, DEAN A. & RITA	55344	612-894-8108
PEITERSEN, LARRY	55318	612-448-2058	REICH, RONALD R.	55420	612-888-7813
PEITZ, PAUL J.	55429	612-560-9370	REICHOW, DEANE A.	55125	612-738-6593
PENGELLY, KENNETH C.	56001	507-625-3804	REINBOLD, BOB	56551	
PERRIN, CHARLES R.(CHUCK)	55384	612-471-7707	REINER, ERIC	55110	612-429-9605
PERSSON, CURTIS E.	55108	612-647-9783	REITER, JOHN G., JR.	55431	612-888-8702
PETERMAN, ALAN	55407	612-721-3295	REITMEIER, JOSEPH A.	55432	612-571-8573
PETERS, AL A.	55428	612-533-0647	REM, PAUL	55108	
PETERS, CECILE F.	55105	612-699-0969	REMDE, PAUL E.	55427	612-544-4685
PETERS, GORDON G.	55337	612-435-6189	RETTIE, MELANIE J.	55102	612-224-3618
PETERS, GREGORY L.	55112	612-483-9015	RETTKE, ALLAN	55337	612-432-7489
PETERSEN, ALLAN D.	55419	612-822-0774	REUSSE, TOM	55337	612-435-9735
PETERSON, C.LESLIE(LES)	56401		REYES, PAUL R.	55122	612-454-3399
PETERSON, DAVID A.	55113	612-636-5389	RHOADE, PHILIP K.	56001	507-345-7142
PETERSON, JOHN G.	55438	612-941-4670	RHOADES, BILL	55057	507-652-2221
PETERSON, JOHN S.	55424	612-920-1184	RIBBLE, DAN A.	55410	612-925-3889
PETERSON, ORIN M.	55431	612-884-4447	RICE, JAMES C. II	55378	612-890-0803
PETERSON, RICHARD H.	55356	612-473-5846	RICE, JEAN M.	55435	612-941-1051
PETERSON, RONALD J.	55424	612-927-8367	RICE, STANLEY D.	55106	612-771-0949
PETERSON, SUSAN	55436	612-920-5688	RICH, KENNETH L.(KEN)	55403	612-377-4682
PETERSON, TODD P.	55117	612-776-0551	RICHARDS, A.M.	55102	
PETERSON, WADE	55418	612-788-2369	RICHARDS, CHUCK	55436	612-929-4814
PETROFF, JOHN N.	55122	612-922-5410	RICHARDSON, MARTHA(MARTY)	55105	612-227-3838
PETTIT, ROBERT E.	55110	612-429-6028	RICHMOND, DAVID	55112	612-784-3007



RIGGS - SMEDMAN

RIGGS, GORDON L.	02144		SCHIEBEL, CURT H.	55437	612-831-0815
RING, JOHN W.	55108		SCHLICHER, DAVID W.	55423	612-869-8262
RISOR, TOM	55075	612-455-3334	SCHLICK, ROBERT C.	55369	612-425-6246
RIVARD, AL	55110	612-770-5463	SCHLOFF, LEONARD D., MD	55116	
RIVARD, DUANE J.	55113	612-484-8896	SCHMIT, JOHN E.	55436	612-927-5231
ROBERTS, CATHY C.	55409	612-822-8034	SCHMITZ, PETER J.	55057	507-645-8582
ROBERTS, GLORIA P.	55119	612-739-7519	SCHNEIDER, RAYMOND J.	55124	612-423-1055
ROBINS, STANFORD	55118	612-455-9444	SCHNEIDER, WILFRED E.	55369	612-425-0186
ROCA, JOAN	56001	507-625-8752	SCHOCHET, H. LAURENCE	55116	612-698-7725
ROCHE, WESLEY A.	55303	612-427-1522	SCHOEPPNER, JOHN C.	55075	612-455-8613
ROGERS, JOHN B.	55426	612-544-0995	SCHOMBERG, STEVEN F.	55108	612-644-6090
ROHLING, MELVIN	55113	612-483-0162	SCHOOLMEESTERS, JAMES R.	55032	612-674-7336
ROHM, DAVID A.	55021		SCHOTT, OWEN W.	55437	612-884-4217
ROHRICHT, THOMAS E.	55108	612-645-6043	SCHRANTZ, GARY	55369	612-425-1499
ROME ELECTR. COMP. MKT. DIV	12186		SCHREIFELS, JOE M.	55119	612-770-2564
ROMIG, E. DELAUN	55124	612-432-6239	SCHROEDER, DORIS M.	55434	612-755-4199
RONNANDER, DUANE	54740	715-639-3405	SCHROPE, DONALD P. SR.	55372	612-447-3501
ROOS AMOS	55108	612-646-8217	SCHROTENBOER, ED	55431	612-881-1857
ROOS, CYNTHIA	55110	612-292-0535	SCHUCK, SCOTT C.	55405	612-374-5494
ROOSEVELT ELEMENTARY SCH.	56001		SCHULMAN, JULES	55416	612-929-5969
ROSE, DEAN	55436	612-933-0261	SCHULTE, RONALD A.	55447	612-473-9633
ROSE, THOMAS J., MD	55082	612-426-1555	SCHULTZ, CLAYTON B.	55417	612-729-0067
ROSENBERG, ROBERT M.	55438	612-377-4300	SCHULZ, UDO E. & MONICA	55442	612-559-1277
ROSENOW, JAMES F.	53094	414-261-2536	SCHURR, DAVID	55432	612-571-1113
ROSS, ROBBIE G.	55343	612-933-3086	SCHWARTZ, PAUL J.	55343	612-934-9717
ROSSOW, MIKE	55414	612-378-2934	SCHWARTZ, RICHARD A.	55340	612-420-2577
ROSWOLD, DOUGLAS R.	55418	612-789-3226	SCHWARTZ, ROBERT W.	55344	612-934-5251
ROUX, DAVID A.	55424	612-920-0949	SCHWENDEMAN, PEG & MIKE	55031	507-263-3801
ROWE, ROGER	54501	715-362-4976	SECHRIST, SHARON S.	55445	612-429-1997
ROWLETTE, CANDACE (CANDY)	55356	612-475-1100	SECHRIST, WAYNE K.	55038	612-429-1997
ROYCE, ELLIOTT F.	55436	612-922-7918	SEIDIO, LOU & MILAN	55437	612-831-4630
RUBENSTEIN, RICHARD	06107		SEGAR, THOMAS W.	55431	612-888-7159
RUCKER, RICHARD D., JR	55105	612-698-8435	SEIBOLD, CAROL D.	55116	612-698-1269
RUEN, REUBEN	55421	612-788-8276	SEIFERT, J.	55438	612-941-6753
RUMMLER, JUDITH B.	55435	612-941-8789	SELAND, SANDY J.	55417	612-721-1075
RUPRECHT, JAMES	55409	612-827-3205	SEM, THOMAS R.	55409	612-822-3675
RUSINAK, RICHARD K.	55109	612-770-6258	SEMLER, DON	55343	612-938-4477
RUUD, ORVILLE	55431	612-888-1961	SENG, RICHARD C.	55401	612-333-5840
RUZEK, KENNETH V., JR.	55445	612-424-2003	SEPTER, MICHAEL P.	50401	515-423-3951
RYDELL, CAROL B.	55431	612-881-1905	SEVERSON, TERRY L.	55438	612-941-1061
RYDELL, ROBERT E., MD	55343	612-933-1019	SEYMOUR, RICHARD M.	54020	715-294-2792
RYSS, RUSSELL	55433	612-757-4381	SHANES, JOHN B., JR	23111	
RYTER, LOREN S.	55343	612-933-1791	SHANNON, MARY BETH	55113	612-636-5204
SABIN, BILLY E.	56014	507-653-4661	SHARP, DANNY	55418	612-788-0559
SACHI, DAVID J.	55104	612-646-0216	SHEA, M. CLARE	55403	612-339-1007
SACHS, SAMUEL II	55403	612-377-9900	SHEEHY, FRANCIS X.	55445	612-542-9504
SACKETT, ROBERT N.	55416	612-929-4292	SHEETS, GEORGE A.	55104	612-646-7018
SAEKS, ALLEN I.	55422	612-374-5122	SHEPHERD, BEVERLY	54022	
SALO, BILL	55373	612-477-5596	SHEPHERD, JOHN	54022	715-425-6203
SALO, WAYNE	55330	612-263-2477	SHERMAN, DAVID C.	55436	612-929-1484
SALSBURY, ROGER L.	55418	612-788-5076	SHERMAN, DUDLEY M.	55125	612-735-6088
SALTER, CHARLES E.	55124	612-432-4487	SHIDLA, DANIEL	55437	612-831-0291
SALTER, ROGER G.	55379	612-445-6324	SHIMP, ALTON C.	55337	612-890-1426
SANDERSON, WAYNE A.	55112	612-484-0913	SHIPLEY, STEVEN A.	55105	612-227-7042
SANDILLA, ROBERT A.	55435	612-941-2290	SHIRLEY, MARY J.	55343	612-935-5604
SANDVEN, ROGER L.	55420	612-884-5841	SHUCK, KENNETH L.	55124	612-432-2435
SANFORD, JOHN E.	55112	612-482-1655	SHUSTER, JOHN	55422	612-537-9697
SANTELLI, JAMES P.	55369	612-424-3577	SHUTEY, ANTHONY R.	55016	612-458-0931
SASSE, DOUGLAS J.	56002-1321		SICARD, EDWARD A. (ED)	55343	612-933-0785
SAUERESSIG, WILLIAM J.	55343	612-935-7912	SIEGEL, DR. LEIGHTON	55118	612-457-9259
SAVAIANO, SYLVIA & CARL	A55331	612-474-8862	SIENKO, RICHARD A.	55422	612-536-0523
SAVELA, ROBERT R.	55104	612-645-4374	SILVAGNI, ROBERT A.	55113	612-489-5425
SAWYER, THOMAS D.	55433	612-757-7316	SIMEK, GINGER	55120	612-454-6247
SCALETTA, PAUL J.	55391	612-475-1043	SIMONS, GERALD A.	55431	612-881-2936
SCHAEFER, GREGORY W.	55101	612-227-2480	SINGER, ROBERT J. (BOB)	55119	612-738-3368
SCHAEFER, JACK F.	55110	612-429-5431	SIPPEL, WILLIAM L.	55125	612-738-7178
SCHAEFER, ROBERT G.	49508		SJOSTRAND, FLOYD C.	55437	612-831-7544
SCHAI, THOMAS W.	55113	612-482-9033	SKARE, DAVID A.	55406	612-724-7743
SCHAPIRO, DENNIS J.	55408	612-823-0886	SKILLESTAD, THOMAS E.	55009	507-263-4735
SCHAUB, JAMES D.	55408	612-825-6692	SKOOG, DAVID J.	55435	612-929-7665
SCHIEFFLER, MARK D.	53012		SKOOG, THOMAS J.	55124	612-432-2365
SCHENZ, JAMES L.	55110	612-429-4931	SLETTEN, MATTHEW	56043	507-373-0190
SCHERER, ALMA	55116	612-699-6165	SLINGSBY, KEN	55089	507-263-3715
SCHOU, JAMES W.	55441	612-544-6084	SMEDMAN, ROGER A.	55122	612-452-5131



SMITH - VELNER

SMITH, BRUCE R.	55441		SWANSON, STEPHEN	56001	507-625-4956
SMITH, CORTLAND	55384	612-827-6872	SWARTZ, CARL H.	55426	612-544-9950
SMITH, DELMER L.	55435	612-941-6996	SWEASY, WILLIAM J. (BILL)	55066	612-388-8736
SMITH, EARL D.	55429	612-561-4885	SWILDENS, ERIC	55436	612-920-9336
SMITH, JOHN G.	55419	612-866-6428	SWONGER, LOREN H.	55441	612-475-2537
SMITH, M. WILEY	55420	612-881-0940	SYLVERS, JEROME	55409	612-822-3388
SMITH, PHILIP A.	55337	612-890-1593	SYMMES, STEVE	55429	512-535-5412
SMITH, ROBERT B.	55418	612-789-3698	T & T PRODUCTIONS, INC.	55436	
SMITH, SHEILA G.	55410	612-926-9538	TAHIR, RUBEN I.	55427	612-542-8954
SMITH, THOMAS L.	55418	612-781-0689	TALBOT, MICHAEL M.	55362	612-295-4524
SNETHEN, MR/MRS PHILLIP A	55431	612-831-5280	TAVERNIER, PAUL E.	55112	612-636-0274
SNOWBECK, DUANE F.	55343	612-938-5738	TAYLOR, BRUCE L.	55410	612-925-3991
SOLHEIM, DAVID B.	55379	612-445-1331	TAYLOR, DAVID K.	55044	
SOLSTAD, JOHN A.	55109	612-786-8783	TAYLOR, LOUIS E.	55429	612-566-2724
SOLSTAD, NORMA	55407	612-824-9931	TAYLOR, TERRY B.	55421	612-788-1864
SOREM, WILLIAM M. (BILL)	55426	612-546-4952	TEELING, ROBERT J.	55123	612-452-4000
SOUKUP, LARRY	55411	612-529-5455	TEETER, BRIAN G.	55424	612-926-5454
SPECIAL INTERMEDIATE SCH	55110		TEIGEN, CASPER A. (CAP)	55418	612-789-3786
SPEXET, DENNIS R. II	55434	612-786-2293	TENNYSON, ROGER	55433	612-757-8920
SPINE CARE, P.A.	55416		TERRELL, W. R.	55337	612-890-7667
SPOTTED EAGLE, CHRIS	55427	612-545-1748	TERRY, JOSEPH M.	55416	612-925-4950
SROKA, ANDREY	55369		TETZLAFF, WILLIAM A.	55419	612-822-8656
ST. FRANCIS H. SCH-COMPUTER	55070		THAMES, MARTIN	55343	612-934-3517
ST. GEORGE, DAVID L.	55101	612-774-0854	THAYER, LEONARD E.	55421	612-574-9691
ST. JOHN THE BAPTIST SCHL	55112		THEIN, PETER J.	56288	612-354-4375
ST. LOUIS PK. COMMUN. EDUC	55426	612-925-4316	THIESFELD, CHUCK T.	55431	612-830-5020
ST. PAUL TECH. VOCAT'L INST	55102		THIESFELD, LLOYD A.	77459	
STANEFSKI, EUGENE T.	55075	612-451-3062	THOM, JONATHAN	55423	612-866-6667
STANEK, MARSHALL F.	55407		THOMAS, KATHY	55435	612-644-4468
STAPF, BONNIE J.	55024	612-463-8714	THOMAS, MARILYN	55408	612-872-7669
STARK, JOHN G.	55419	612-827-8060	THOMAS, RICHARD J.	55437	612-831-4956
STARK, LOREN	55108	612-292-9266	THOMPSON, ERNEST L.	55432	612-786-1891
STEELE, JAMES R.	55433	612-755-1307	THOMPSON, FLOYD M.	55441	612-546-2388
STEGALL, THOMAS L.	55369	612-420-3572	THOMPSON, ROY L.	55113	612-636-3419
STEIL, WILLIAM B.	56001	507-387-5892	THOMPSON, TERRY A.	55344	612-944-3880
STEINBAUER, JOHN E.	55121	612-884-7444	THORPE, PETER L	56301	612-259-0400
STEINBERG, BARBARA	55409	612-827-3295	TIDWELL, NORRIS W.	55419	612-825-9607
STEINBERG, STEPHEN	55331	612-474-4356	TILLMAN, DAVID	55408	612-824-4617
STEINKAMP, DONALD	55426	612-927-9263	TIMMERMANS, KEVIN P.	55408	612-827-0641
STEPHEY, LAWRENCE D.	55121		TIMMONS, MARTIN J.	55437	612-831-2883
STETTNER, GLENN R.	55418	612-789-5760	TISEL, JAMES M. (JIM)	55387	612-920-2605
STEWART, ELLEN S.	55391	612-475-0513	TITTLE, PATRICK J.	55104	612-778-8258
STEWART, PATRICK W.	55419	612-825-8226	TOBLER, H. GARETH	55428	612-535-2391
STILLER, PAUL F.	55331	612-474-3109	TOFT, ROD A.	55042	612-777-5460
STILLEY, GEORGE D.	55427	612-544-4767	TRAN, PAUL H.	55104	612-645-1088
STOCK, LARRY	55405	612-374-2405	TREEN, HAROLD M. (CHIP)	55411	612-522-9101
STORLIE, LEONARD O.	55124	612-432-2965	TRENCE, DALE L., MD	55108	612-646-1919
STOUTENBURGH, JOSEPH S. JR	55343	612-933-2461	TRETTEL, ERNEST W.	55303	612-434-4523
STRAND, DALE	55431	612-888-4029	TRIFFIN, NICHOLAS	55113	612-488-1182
STRATE, RICHARD G.	55110		TRITES, JEFFREY	56551	218-583-2223
STRATHMAN, LARRY	55417	612-724-2833	TROMP, MARVIN R.	55104	612-644-0934
STRATMAN, PHYLLIS A.	55434	612-757-6574	TROST, LAWRENCE C.	55746	218-263-4368
STRATMOEN, PETER A.	55125	612-739-5796	TROTTOCHAU, LARRY D.	55357-00326	612-479-3375
STREBIG, KELLY	55118		TUCHNER, JOHN R.	55016	612-459-0316
STRIBLING, JAMES	55364	612-472-2886	TUCKER, MITCHELL J. (MITCH)	55404	612-375-1487
STRIPE, HARRY E.	55337	612-890-1393	TUFTE, DAVID	55356	
STRUSS, STEVEN A.	55447	612-473-5726	TURNER, LAWRENCE P.	55113	612-483-1754
STUMMER, JOHN R.	55437	612-884-5488	TWEEDY, DONALD C.	55118	612-452-8992
STUPPY, B. MICHAEL	55435	612-941-8530	TWIN CITY PET SUPPLY CO.	55107	612-771-7695
STURM, ALBERT	55082	612-439-3040	UELAND, W. SCOTT	55414	612-623-3749
STUTSMAN, THEODORE M. (TED)	55424	612-926-2223	ULSTROM, ROBERT A., M.D.	55416	
SUCHY, CECIL M.	55110	612-777-7821	UNDLIN, DAVID W.	55124	612-432-0913
SULLIVAN, ROBERT A.	55315	612-448-3229	UPJOHN, WILLIAM H. (BILL)	55424	612-929-6234
SULLIVAN, STEVE B.	55410	612-920-8463	VAN BEEK, CURTIS E.	55082	612-436-5786
SUNDE, RICHARD W.	55418	612-789-3080	VAN DEN BERG, TRACY	55124	612-423-3143
SUPEL, THOMAS M.	55356	612-475-3264	VAN DYNE, BRUCE	55391	612-473-1086
SURINA, MARTIN W.	55723	218-749-2241	VAN NURDEN, KEN	55420	612-881-4637
SURINE, SUSAN G.	55117	612-774-2224	VANDERMYDE, JOHN W.	55418	612-781-9839
SUTHERLAND, KAREN	55105	612-698-2284	VATHING, ROBERT S.	55343	612-934-1295
SWAN, JANET & CRAIG	55408	612-374-2496	VAUGHAN KAMLA COMPANY	55104	612-224-6496
SWANDA, JANET A.	55343	612-938-0768	VAUGHN, JAMES R.	55430	612-560-8559
SWANSON, EMMETT	55418	612-788-6704	VEEDER, JIM L., JR	55420	612-881-5552
SWANSON, KENNETH W.	55431	612-884-2716	VEERKAMP, TIMOTHY P.	55123	612-454-2095
SWANSON, LARRY R.	54004	715-948-2846	VELNER, RICHARD E.	55424	612-920-8645



VERPLOEGH - ZIRKLE

VERPLOEGH, JAMES A.	55109	612-770-8175	WHIPPLE, ALAN	55105	612-699-5334
VETTER, STEVEN C.	55112	612-631-3682	WHITE, CHUCK	55379	612-445-6240
VIDMAR, DAVID L.	55710		WHITE, DAVID E.	55112	612-483-6926
VIETZ, EVELYN M.	55421	612-571-6980	WHITE, GARRY C.	55944	507-634-4161
VILLELLA, RONALD L.	55436	612-935-1307	WHITE, GARY D.	55419	612-822-7956
VINCENT, ROBERT D.	55414	612-331-8476	WHITING, BARBARA L.	55343	612-938-6652
VITELLI, JACK	55118	612-455-3302	WHITNEY, ALLAN	55438	612-941-1831
VOET, RAYMOND A.	55416	612-925-2577	WICKER, JAMES P.	55118	612-455-2455
VOEL, DANIEL	55106	612-776-4294	WIDEMAN, GLENN D.	55438	612-941-6462
VOIGT, JEFFRIES	55426	612-545-5494	WIESE, DICK W.	55436	612-929-6261
VOLMER, C. LUMINITA	55430	612-529-5213	WIGAND, RICHARD G.	55410	612-922-5998
VOSSLER, JUDY C.	55343	612-933-7447	WIJK, JOHN E.	55112	612-483-2592
WACHAL, DAVID E.	58102		WILLIAMS, EDWARD	55125	612-739-8446
WACHENHEIM, CHERYL	55112	612-633-7497	WILLIAMS, RUSSELL & MARY	55117	612-488-9978
WALBURN, ALLEN D.	55105	612-690-4474	WILLIAMSON, DR. KENNETH R.	55901	507-281-4982
WALD, RANDY J.	55116	612-645-8679	WILSON, BENJAMIN H.	55104	612-645-4004
WALKER, MOLLY G.	55403	612-377-3287	WILSON, EUGENE D.	55372	612-447-5228
WALLACE, JOHN	55409		WILSON, GARY	55416	
WALSH, JEANNE H.	55005	612-753-3204	WILSON, GEORGE F.	55391	612-475-1056
WALSH, THOMAS E.	55121	612-452-1458	WILSON, KRIS & DENNIS	55337	612-894-1077
WALSH, THOMAS J.	55414	612-331-7762	WILSON, PAUL	55441	612-544-0493
WALTERS, GERALD	55369	612-424-2758	WILSON, RICHARD A.	55102	612-227-4550
WARK, DAVID M.	55108	612-644-8533	WILSON, WILLIAM R. (BILL)	55426	612-545-8368
WARNER, LEE	55430	612-560-0384	WINKELHAKE, MARK	55337	612-866-8554
WARNER, WILTON	55343	612-934-9366	WINKWORTH, JOHN M.	56001	507-387-7170
WARRIOR, JOGESH (JAY)	55108	612-489-8694	WINSOR, JAMES A.	55431	612-831-8149
WARWOOD, ROBERT D.	55110	612-482-8437	WINTERHALTER, DAN	55406	612-721-6732
WASHBURN, DAN	55102	612-292-0387	WIRTH, NANCY & MARTY	55429	612-561-1597
WATLAND, JAMES R.	55111	612-432-7113	WISKI, DONN R.	55113	612-488-9586
WATSON, WILLIAM (BILL)	55431	612-881-8883	WITHERSPOON, ANDREW V.	55337	612-894-3948
WATTERSON, KAREN L.	58205	701-594-4789	WOHLSCHIED, FRANCIS M.	55426	612-546-0719
WAYZATA JR. HIGH SCHOOL	55391		WOLFF, ROBERT E.	55435	612-920-2224
WAYZATA, CITY OF WAYZATA	55391	612-443-2010	WOLLACK, E.F.	54013	715-684-3738
WEBER, GREG	56001	507-625-5662	WOLLSCHLAGER, ROGER	55420	612-854-0080
WEBER, LAUNCE G.	55424	612-926-4152	WOOD, ERVIN D., JR	55422	612-588-4743
WEBER, LILLIAN M.	55424	612-926-4152	WOODHULL, HOLLY	55419	612-827-4981
WEBER, THOMAS L.	55403	612-374-3440	WOODWARD, FREDERICK B.	55115	612-426-4060
WEGNER, DAVID	55060	507-451-4909	WORKINGER, GEOFF S.	55424	612-922-7152
WEIN, REBECCA M.	55343	612-546-8788	WORMWOOD, EARLE D.	55343	612-935-7922
WEINBLATT, ALAN W.	55118	612-457-2828	WRANESHAY, MICHAEL	55303	612-757-6365
WEINER, HOWARD	55435	612-935-9270	WREN, JAMES W., SR.	55104	612-487-1266
WEINHAGEN, ED	55107		WRIGHT, DICK L.	55431	612-835-5261
WEINKE, DONALD C.	55133		WYDEVEN, ROBERT M.	55122	612-452-3919
WEINREBE, DION R.	55431	612-888-6629	WYNNE, EARNEST C. III	55343	612-935-7148
WEISBERG, BURTON	55426	612-938-3865	YAUGER, FRANK A.	54501	
WEISBERG, DR. HAROLD L.	55116	612-698-1009	YOCUM, ANTHONY A. IV	55109	612-777-5210
WEISER, WILLIAM M.	55112	612-636-1379	YOUNG, A. MICHAEL	55420	612-884-2841
WELCH, WILLIAM W.	55364	612-472-3628	YOUNG, ALWIN C.H.	55438	612-835-3099
WELLINGTON, DAVID	55407	612-824-4620	ZACHARIASON, KATHY	56093	507-835-5585
WENDT, RICHARD W.	55379	612-445-7911	ZAHALAN, PAUL	55444	612-561-5073
WENDT, WENDELL D.	55987	507-454-3573	ZAJICEK, WILLIAM R.	55101	612-776-1577
WENGER, D. WAYNE	55424	612-926-8627	ZAPOLSKI, ROBERT I. (BOB)	55113	612-482-7918
WERNER, F. DAVID	55435		ZASTROW, JOHN W.	55343	612-933-7732
WEST BANK COMMUN. DEV. CORP	55454		ZERBY, JUDY & MIKE	55432	612-571-5378
WEST, DICK W.	55303	612-753-4058	ZETTERLUND, RON	56164	612-825-5535
WESTLING, RYAN E.	55438	612-941-2452	ZICARELLI, JAMES R.	55435	612-926-4538
WETZEL, RITA	55317	612-474-5725	ZIEMER, EDWARD L.	55901	507-288-4521
WEXLER, JOHN	55407	612-722-7069	ZIMMERMAN, ROBERT L.	55343	612-934-9225
WHEELER, J. EDWARD	55423	612-881-5928	ZINS, BARBARA	55322	612-442-4743
WHEELER, RICHARD L.	55106	612-489-6241	ZIRKLE, RAY E.	55429	612-537-0184
WHEELER, SUSAN J.	55416	612-920-5900			



Special Deals on Magazine Subs
by Dan Buchler

Reduced rates are available to club members for the following magazines:

Call A.P.P.L.E.

You can join A.P.P.L.E. and receive a year's subscription to Call A.P.P.L.E. for \$20 annual dues plus \$5 Apple-Cation fee (\$25 total). The Apple-Cation fee is normally \$25. This will be in effect until Jan 1, '84. Send self-addressed, stamped envelope to Hugh Kurtzman for application form. Make checks payable to Mini'app'les.

Apple Orchard

This is the magazine of the International Apple Corps (IAC). Non-Member subscriptions (24 issues) are \$24. For \$21 you will receive 12 issues and a free DOM (at a meeting). DOM can be mailed for additional \$2.50. Send self-addressed, stamped envelope to Dan Buchler (address in Mini'app'les information list) for application form. Make checks payable to IAC. A voucher worth \$5.00 will be returned to you on receipt of check.

Link-Up Magazine

This is a new magazine published locally with national distribution devoted to data communications, but aimed at all levels of interest. Introductory subs to non-members are \$23.95. To members it is \$17.70 (if we can get 6 persons to sign up). Call Dan Buchler.

CREATIVE PERSONAL COMPUTER
SOFTWARE PROGRAMMERS

A new, successful firm established to create unique software programs for consumer users of all types and brands of personal computers, has an immediate need for experienced programmers. Supervisory experience is a plus. Must be hard working, intelligent, creative and innovative. Must also be a self starter. Working knowledge of structured languages essential.

If you have all these qualities and want a future with a growing company, send resume and salary history to:

PBL CORPORATION
P.O. Box 559
Wayzata MN 55391

Professional Service

Get it done right the first time!

We give quality service on all Apple products and Epson printers.

Need on-site repair?

Call us--on site and maintenance contracts available.

hagen

OFFICE EQUIPMENT, INC.

801 WEST 77 $\frac{1}{2}$ STREET
RICHFIELD, MINNESOTA 55423 866-3441

OmegaBoard II keyboard Bulk Purchase
by Dan Buchler

The OmegaBoard II bulk purchase, announced in the August newsletter is still open. The price is still \$299.95 (which is lower than the TCCS special) and will be in effect until October 15th. Zicor has waived the minimum quantity buy requirement. This is a one time only deal for Mini'app'les members! If you are interested call Larry Mingus of Zicor at 731-1762.

The OmegaBoard is the add-on keyboard demonstrated during the July Mini'app'les main meeting and also shown at the TCCS. We think it is a good product. There are 25 user programmable keys which can invoke a character string up to 31 characters in length plus 2 keys that can send up to 255 characters. (You can put your letter head in there).

It differs from other keyboards in that the key functions may be downloaded from an Apple program. For example, your HELLO program for your Word Processor can set up the keyboard with the appropriate function keys ready to do INSERTs, DELETES, etc. In addition there are several hard-coded (in ROM) levels including VisiCalc™, MultiPlan™, AppleWriter II™, Epson printer commands, Apple DOS (such as CATALOG), PLE, Applesoft, Magic Window™, CP/M, WordStar™, and Programming aids (such as starting address of last BLOADED program).

You can also order your own version of a ROM if you don't want to download.



Communications SIG Advanced Programming Seminars by Jay Warrior

The communications SIG is offering a series of two-hour seminars beginning during the third week of October on integrating hardware into the Apple Pascal system.

The first seminar in the series will deal with techniques for using interrupts with the Apple Pascal system. The seminar will describe the basic use of interrupts to interface hardware to the Apple and how to use them so as to provide a simple multi-programming environment...

Subsequent seminars will explore the philosophy behind Apple's chosen method of using "SYSTEM.ATTACH" to configure custom device drivers into the system and will show how this was done for the micromodem driver that will be used in the bulletin board.

This is an advanced course and those who would like to make best use of the techniques that will be presented here should have a reasonable knowledge of Pascal and assembly language. Documentation will be provided at cost.

Twin Cities Computer Show (TCCS)

The TCCS came and went a 2nd year. We acquired 139 new members at the show. Your newsletter Editor wishes to thank all who participated.

Many of us were dissatisfied with the way in which the exhibitor turnout has been going. There are fewer and fewer software houses and manufacturers represented. Instead we see more and more national discount houses.

***** IF YOU KNOW WHAT YOUR LOOKING FOR IN ANY MICRO-COMPUTERS OR ACCESSORIES WHY PAY MORE????? CALL CARLSON ENTERPRISES !!!! SPECIALS 64K 80 COLUMN CARD for //e \$169.00 16K MICROSOFT RAM CARD \$ 73.95 CARLSON ENTERPRISES HARDWARE & SOFTWARE CALL AFTER 5 884-1552 "THE LITTLE GUY WITH THE BIG DEAL!" *****

Mini'app'les Software Disks MSDs 3 Great Disks: Mini'Scrip Checkbook Financial System - MSD #1. A home and small business checking and accounting package by Leighton G. Siegel. Micro-mailer - MSD #2. Mail list program by Juris and Paula Ozols of Prairie Microsystems Inc. Higher Text Extensions - MSD #3. Contains Higher Print by Dan Buchler, Message Maker by Charles C. Boody and Higher Word-processor by Don Hagberg. Higher Print provides a high density print capability with a selection of fonts and more if you own Higher Text from A.P.P.L.E. Message Maker requires that you own HIGHER TEXT. Higher Word Processor is a easy to use line oriented text editor suited to letter writing and everyday home use. All MSDs are available at meetings, to members only, for \$15, or by mail from Terry Schoepner for \$17.50.



Investment SIG
by Eric Holterman

Visicalc Special Interest Group
by Mike Carlson

The October Investment SIG will meet as one of the cluster groups following the main program at the Regular Meeting on October 19. The meeting will feature a brief question & answer period followed by a software demonstration.

At the October VIG meeting, Mike Carlson will offer a presentation of Visicalc Advanced Version for the //e. This is rescheduled from May because the program was not available at that time.

We are tentatively planning to demonstrate ISAAC, a program designed to handle compound interest problems involving irregular amounts and incidences of cash flow. It will provide the present value, accumulating cash flow (future value) and yield. Recently the author of this copyrighted program donated it to the Public Domain. I believe you will find the program to be quite useful and complete. Documentation is also available for it.

The meeting will be held, as usual, at Personal Business Systems, 4306 Upton Avenue South, Minneapolis, MN 55410, on Tuesday, October 25, from 7-9 p.m. Call 929-4120 for directions or questions.

The Visicalc Interest Group is available as a place for Mini'App'les members to share information in the use of Visicalc. Experienced users are available at each meeting to answer questions and offer suggestions. The first part of every meeting is reserved for questions. Some meetings have no formal program and only involve discussion and experiments, but most nights, there is some product that is displayed or reviewed.

Following the demonstration, we will select a few other pieces of public domain software to be reported on at the November meeting. We have collected several disks of public domain software and hope that this will lead to consolidating a few usable programs, with documentation by SIG members, on an investment DOM. We will also be able to provide other public domain programs in as is condition.

Koala-Pad Bulk Purchase

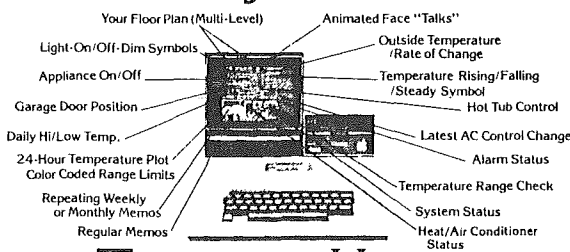
Presidential phone number.

Last month Eric Holterman asked for a show of interest in a bulk purchase of the Koala-pad. Because there was very little response and because of the heavy overstocking of Koala-pads for the TCCS, we have decided to abandon this effort.

El presidente has new number:
431-7278

The membership list was printed before the change.

Introducing
the latest thing in
today's home



TomorrowHouse.

Meet TomorrowHouse.
TomorrowHouse is solving everyday problems with computer technology. TomorrowHouse addresses the issues that people are concerned with today: security in their homes, efficient use of energy, and making a complicated life a little easier.

Take a look at life tomorrow, today. TomorrowHouse . . . the home of tomorrow, at your fingertips today.
Home Security, Monitoring and Control



Compu-Home Systems Inc.

Photo Courtesy of Apple Computer Inc.

Qualifies for an Energy Saving Device Tax Credit

AUTHORIZED DEALER FOR:

COMPU-HOME SYSTEMS INC
Tomorrow House Package \$ 895

US ROBOTICS INC MODEMS \$ 189
PHONE LINK ACOUSTIC 240
MICRO LINK 300 270
AUTO LINK 300 450
MICRO LINK 1200 498
AUTO LINK 1200 549
AUTO LINK 212A 599
AUTO DIAL 212A 448
PASSWORD 300/1200 520
COURIER OSBORNE COMPATIBLE S-100 BUS 449
TELPAC SOFTWARE 79

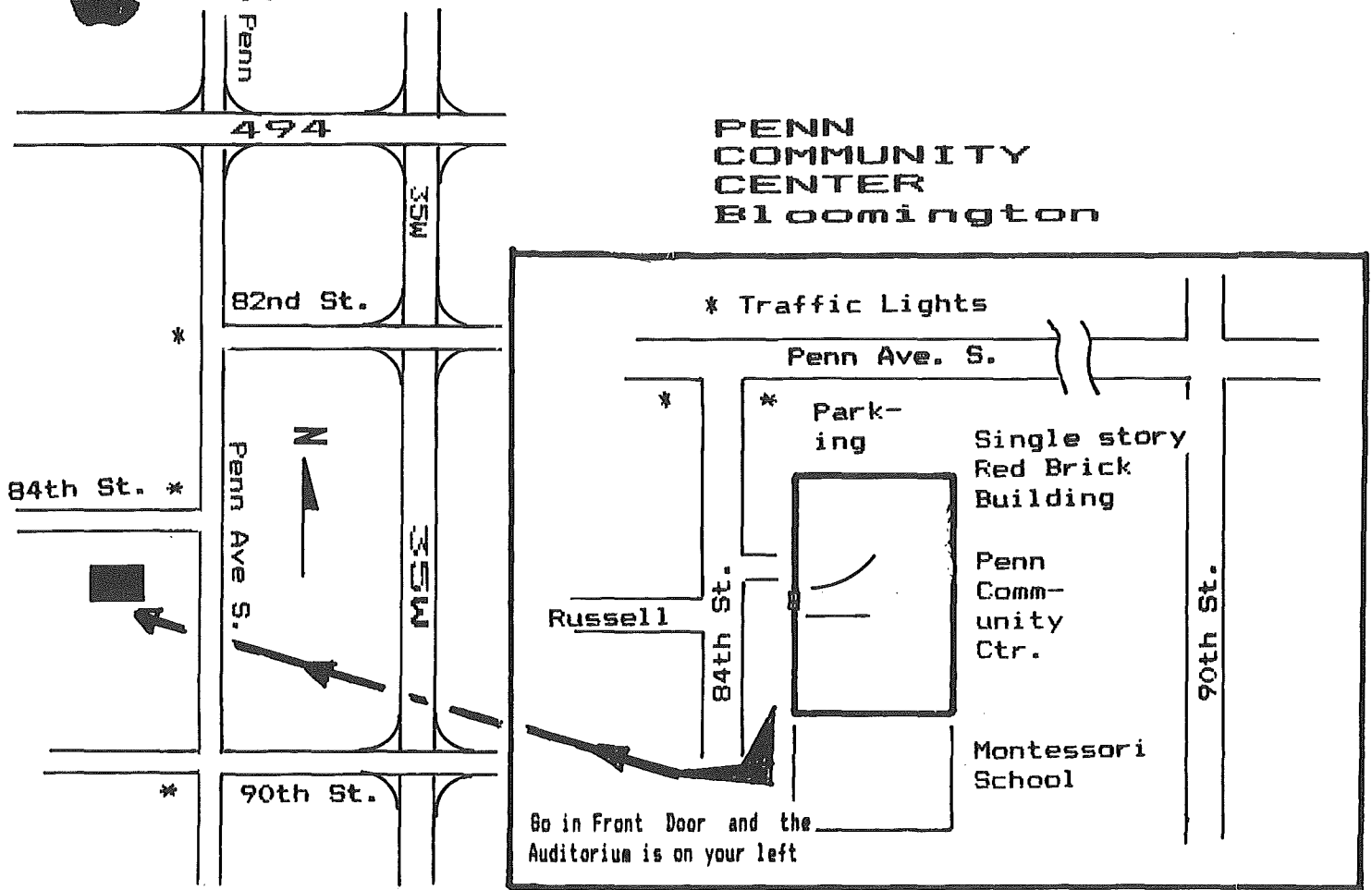
VOICE SYNTHESIZERS FROM \$149

PRINT WHEELS and RIBBONS
HYTYPE PICA no10 \$5.19
HYTYPE II 5.51

To Order or Communicate write to:

Independent
Environmental
Services

PO Box 19083 MPLS MN 55419



CLASSIFIED

These ads are provided free to members for non-commercial use, and are limited to 10 lines. Commercial ads will be charged at 20 cents/word for members or 40 cents/word for non-members. Contact the Advertising coordinator. DEADLINE for ads is the second Friday of the month preceding the month of publication. Ads will be repeated on request only. Also, please notify editor if item is sold. Unless otherwise noted, all items are For Sale.

SSDD 3M Scotch Diskettes;
\$21.00 Box 10 tax incl.
Bob Raff 452-2541

Apple II+ - complete
system including monitor,
printer, etc. 227-4231

Micro Computer Hardware &
Software Rental; Apple
III Software; \$20 thru
\$35 monthly. Games \$5
thru \$10 monthly.
Sarah 473-1977(eve)

Apple III, 128K, 2 disk
drives, UPIC card, clock,
joystick, modem, much
software. \$2400.
Curt Fischer 623-3900

Okidata Microline 80
Printer, friction &
tractor feed with roll
adapter, 80 CPS. Used
very little, works like
new. \$250.
Jim Baker 872-6741(e)

Execuport 300 for remote
timesharing. Portable
briefcase data/text
terminal for ASCII phone
use. Std Keyboard for
input, thermal printer
for output. Orig \$800,
asking \$285 or make
offer. Excell cond, ready
to use, with manuals & 7
rolls paper incl.
Call 739-9205

MX-100 Printer - \$650.
Like new.
432-8059 (eve & wkends)

Software for sale: Data
Reporter; Comp-U Read;
Pronto DOS.
George 822-1084(eve)

ORDERING DOMs or MSDs

A reminder that Disks Of
the Months (DOMs) and
Mini'Apples Software
Disks (MSDs) are
available by mail: DOMs
at \$7.50 each; MSDs at
\$17.50 each. Send your
order to:

MINI'APPLES DOM's
Box 241
Inver Grove Heights
Mn., 55075

Usually the latest three
DOM's and all the MSDs
are available at club
meetings. Because of the
volume of disks
distributed, they are not
tested. Club members are
asked to make every
effort to get the DOM or
MSD running. For
example, occasionally the
DOS on the disk will be
bad, but it will catalog
OK and one can run the
programs. Master Create
on your System master
disk will fix-up the
DOS. Of course, if you
have a disk with bad
programs, we will
cheerfully replace it!

A service to copy DOMs
(not MSDs) to your own
media is also available.

ATTENTION:



WE HAVE YOUR PRINTER PAPER

- IN STOCK -

11" X 9½" - 15# or 20# Paper

SMALL QUANTITIES TOO: 250, 500 or 2000 per carton

Also: MANY OTHER SIZES AND TYPES OF PRINTER PAPER (Stop in and see our selection), DATA PROCESSING AND OFFICE SUPPLIES, SNAP-A-PART FORMS AND WEDDING INVITATIONS.

OPEN MONDAY thru FRIDAY - 8:30 - 5:00

NEW!
In-Stock
Continuous Postcards,
Index Cards and
Micro-Perf Printer Paper

NOTE: New Hours 

For more information call:
(612) 332-4866

House
of **F**orms

20 NO. 1ST STREET • MINNEAPOLIS, MN 55401

SAVE THIS COUPON!

THIS COUPON ENTITLES MINI'APP'LES MEMBERS TO A

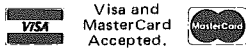
10% DISCOUNT
ON ANY PURCHASE AT



This Discount Will Not Apply
On Sale Merchandise
Or With Other Discounts.

Expires Dec. 31, 1983

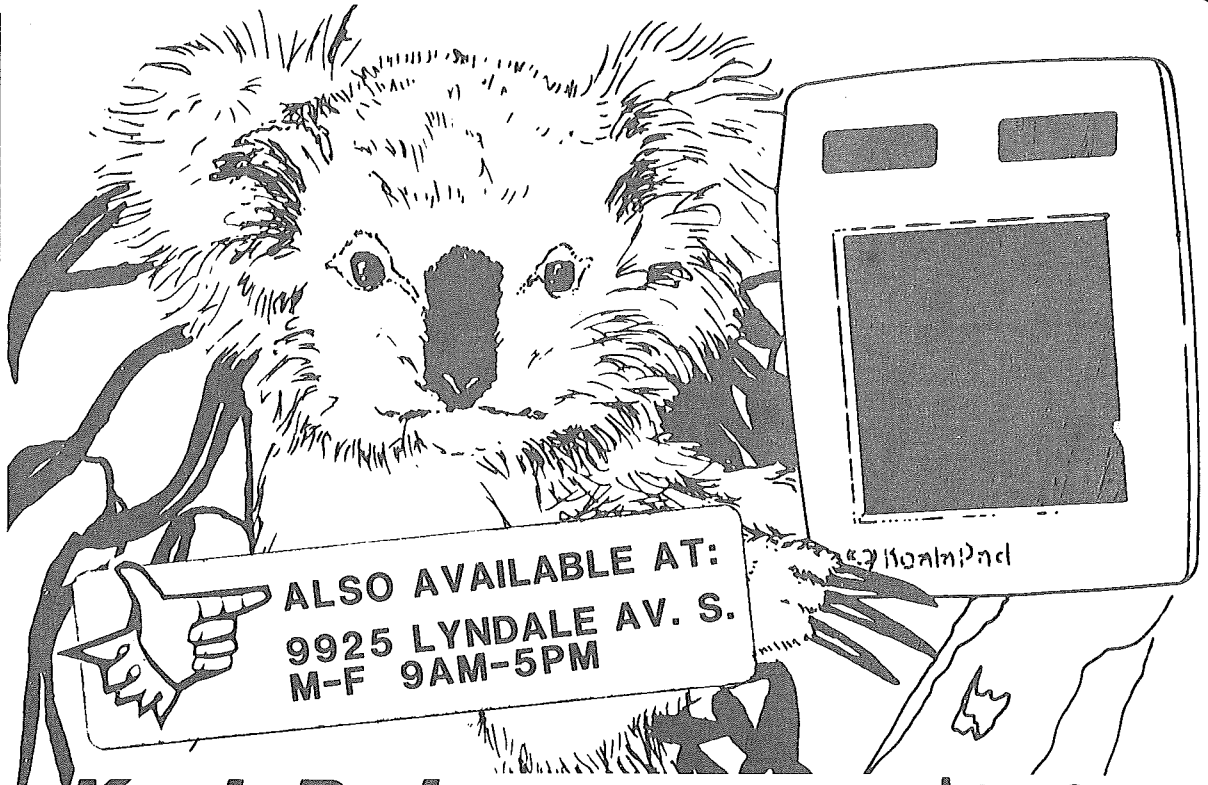
20 North First Street
Minneapolis, MN 55401



Visa and
MasterCard
Accepted.

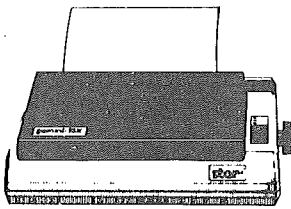
HALLOWEEN SPECIAL

sale ends on October 31st



KoalaPad™ Touch Tablet \$69.95
complete with software for apple® or IBM® personal computers

stair
gemini 10X \$299



The Bufferboard or Grappler+ \$129 ea.
For Apples and Printers Printer Interface

stair + Grappler+ \$399
gemini 10X Printer Interface

yukon computer
(612) 944-1180 p.o. box 37088
bloomington, mn 55431

Check expiration date on label

This is the only notification which you will receive.
Please pay your dues of \$12 before that date

Mini'app'les
Box 796
Hopkins, Mn. 55343

ADDRESS
CORRECTION
REQUESTED

1
SALO, BILL
R.R. 2 BOX TT 8

241 12-1-83

ROCKFORD MN 55373

Bulk Rate
US Postage
PAID
Hopkins, MN
Permit 631